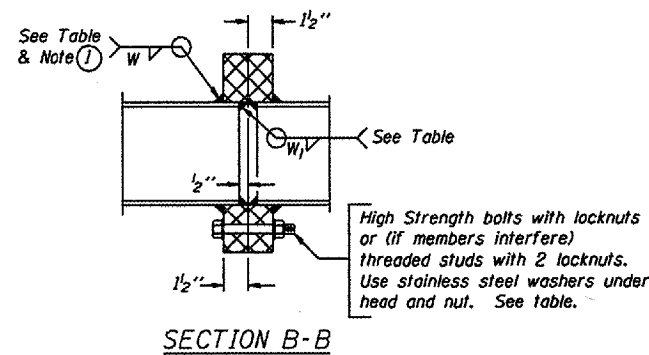


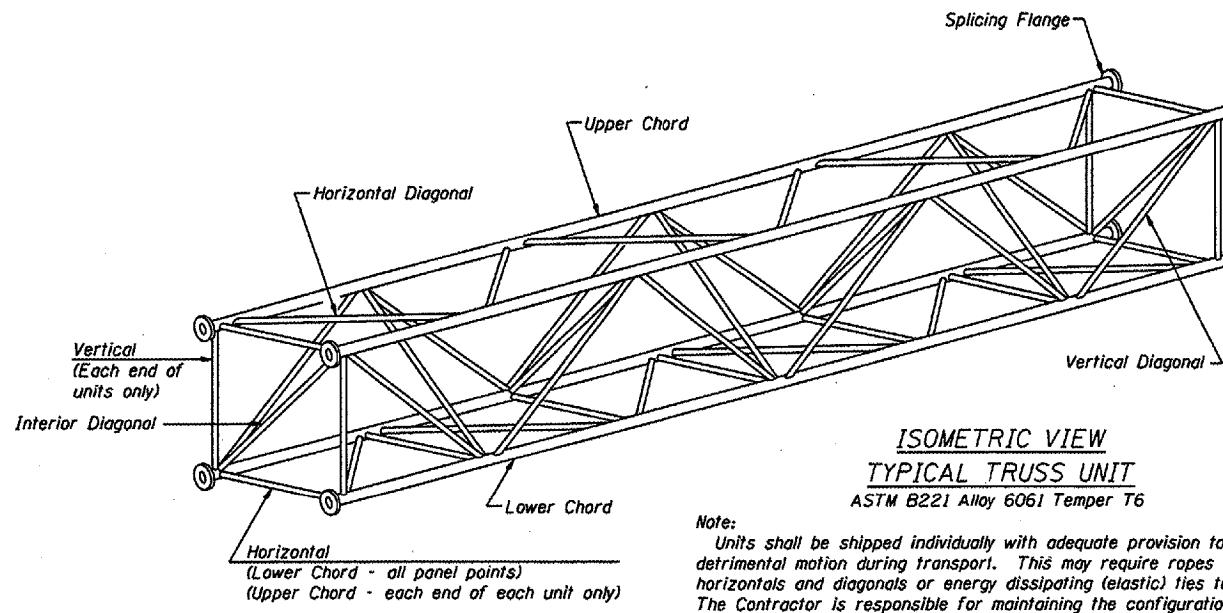
TRUSS UNIT TABLE

Structure Number	Station	Design Truss Type	Exterior Units (2)			Interior Unit				Upper & Lower Chord		Verticals; Horizontals; Vertical, Horizontal, and Interior Diagonals		Camber at Midspan	Splicing Flange					
			No. Panels per Unit	Unit Lgth.(L <sub>u</sub> )	Panel Lgth.(P)	No. Req'd.	No. Panels per Unit	Unit Lgth.(L <sub>i</sub> )	Panel Lgth.(P)	O.D.	Wall	O.D.	Wall		Bolts		Weld Sizes		A	B
															No./Splice	Dia.	W	W <sub>1</sub>		
550101072L182.2 *	N/A	I-A	8	38'-10 1/2"	4'-7 1/2"				5"	5/16"	2 1/2"	5/16"	2"	6	7/8"	5/16"	1/4"	8 3/4"	11 3/4"	
550101057R239.9	582 + 20	I-A	6	31'-4 1/2"	4'-11"				5"	1/4"	2 1/2"	1/4"	1 1/2"	6	7/8"	5/16"	1/4"	8 3/4"	11 3/4"	
550101074R178.7	1824 + 00	I-A	8	39'-10 1/2"	4'-9"				5"	5/16"	2 1/2"	5/16"	2"	6	7/8"	5/16"	1/4"	8 3/4"	11 3/4"	
550921074R214.0	1913 + 00	I-A	6	29'-4 1/2"	4'-7"	1	6	28' - 9" 4' - 7"	5"	5/16"	2 1/2"	5/16"	2 1/2"	6	7/8"	5/16"	1/4"	8 3/4"	11 3/4"	

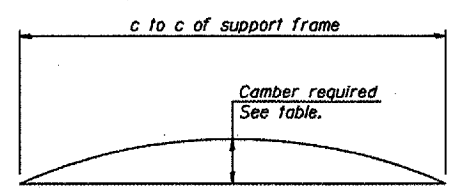
\* Existing overhead sign structure details not available.



① Splicing Flanges shall be attached to each truss unit with the truss shop assembled to camber shown. Truss units shall be in proper alignment and flange surfaces shall be shop banded into full contact before welding. Sufficient external welds or tacks shall be made to secure flanges until remaining welds are made after disassembly. Adjacent flanges shall be "match marked" to insure proper field assembly.

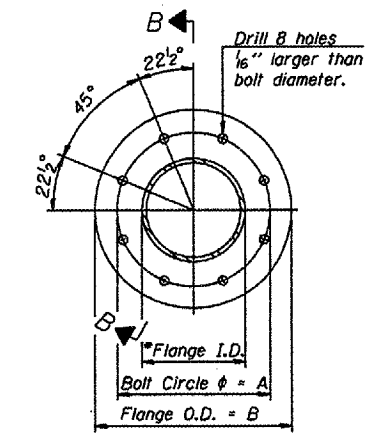
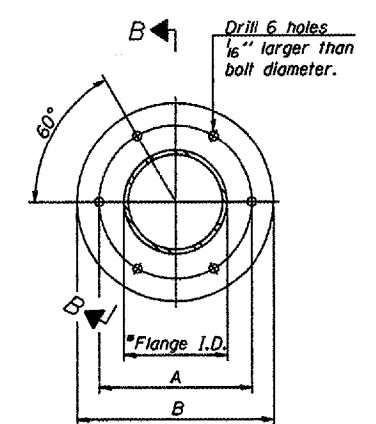
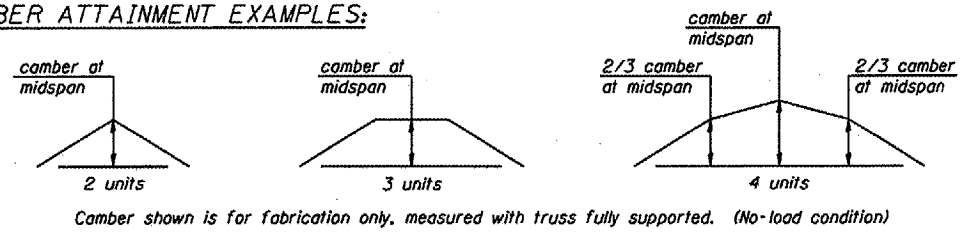


Note:  
Units shall be shipped individually with adequate provision to prevent detrimental motion during transport. This may require ropes between horizontals and diagonals or energy dissipating (elastic) ties to the vehicle. The Contractor is responsible for maintaining the configuration and protection of the units.



Camber curve shown is theoretical. Actual camber attained by slope changes at splices between units.

CAMBER ATTAINMENT EXAMPLES:



SPLICING FLANGES  
ASTM B221, Alloy 6061-T6  
or ASTM B209, Alloy 6061-T651  
\*To fit O.D. of Chord with maximum gap of 1/16".

OVERHEAD SIGN STRUCTURES  
ALUMINUM TRUSS DETAILS  
FOR TRUSS TYPES I-A, II-A and III-A

District 5  
Overhead Sign Structure  
Repair and Replacement

NUMBER	REVISION	DATE

DESIGNED	20
CHECKED	EXAMINED
DRAWN	PASSED
CHECKED	ENGINEER OF BRIDGES AND STRUCTURES