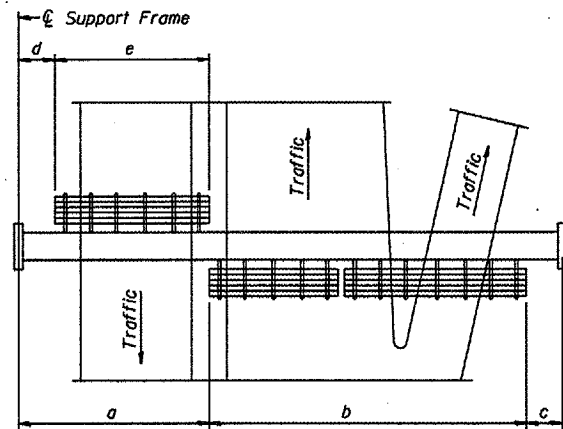
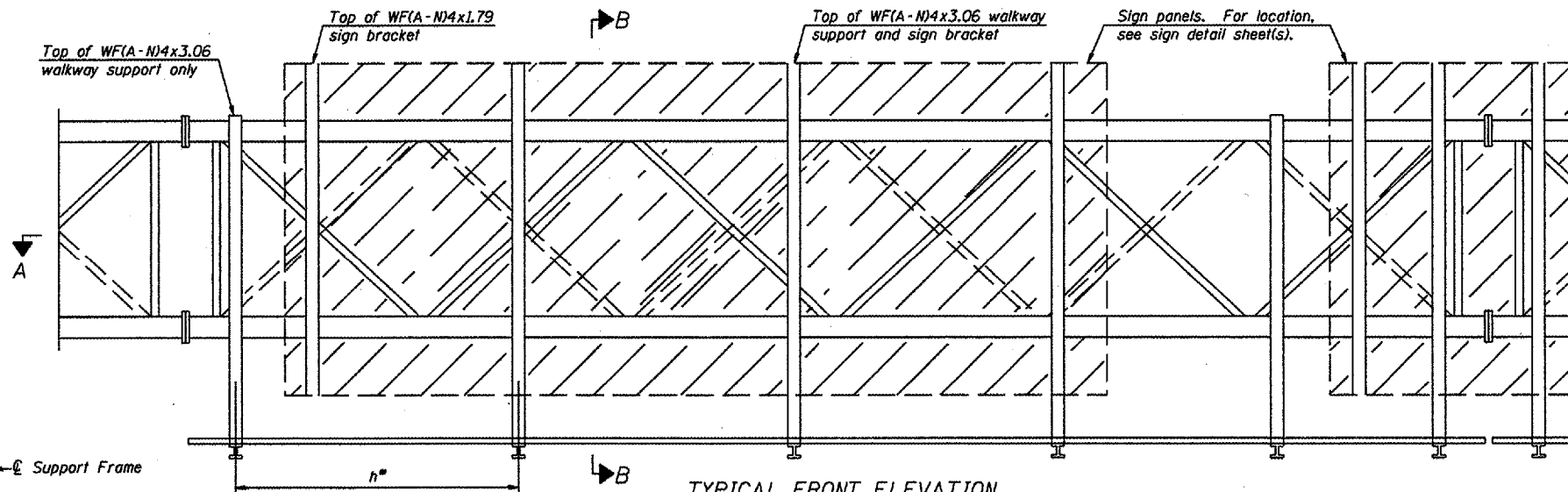


STATE OF ILLINOIS  
DEPARTMENT OF TRANSPORTATION

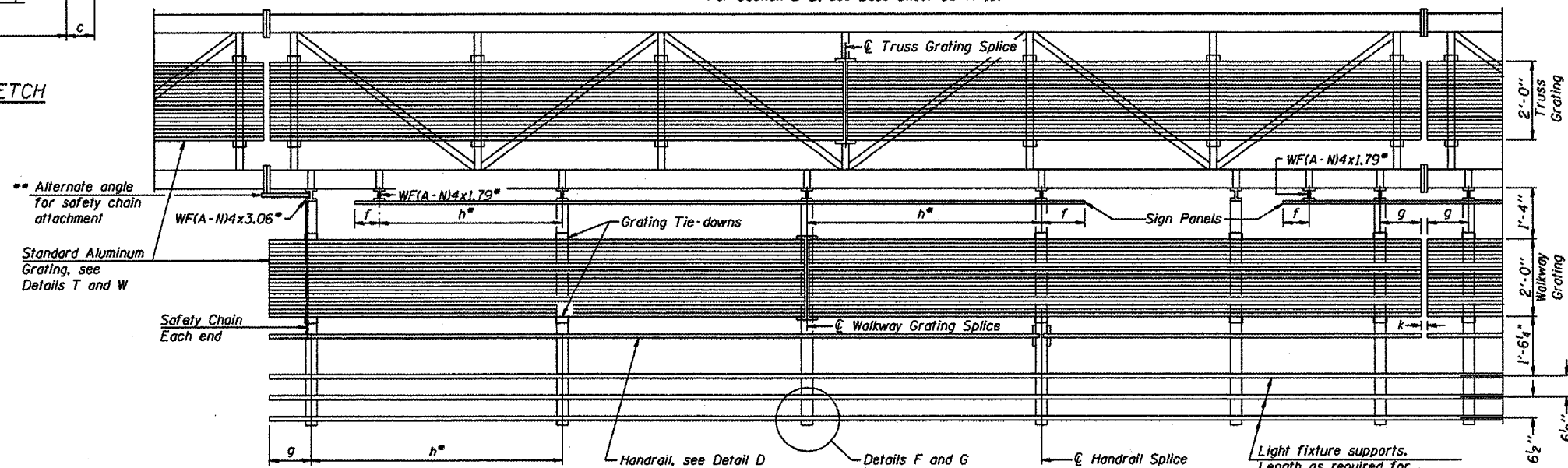
Various Routes  
OVD SIN STR REP & REPL 2006-9  
Various Counties  
Sheet 60 of 89  
Contract Number 44904



PLAN  
WALKWAY AND HANDRAIL SKETCH  
(Road plan beneath truss varies)



TYPICAL FRONT ELEVATION  
With lights and handrail omitted for clarity.  
For Section B-B, see Base Sheet OS-A-10.



SECTION A-A

Handrail and walkway shall span a minimum of three brackets between splices and/or gap joints. Place all sign and walkway brackets as close to panel points as practical. Grating, handrail and light support splices placed as needed.

Truss grating to facilitate inspection shall run full length (center to center of support frames) ±12" on overhead trusses. Cost of truss grating is included in "Overhead Sign Structure".

BRACKET TABLE

Sign Width		Number Brackets Required
Greater Than	Less Than or Equal To	
	8'-0"	2
8'-0"	14'-0"	3
14'-0"	20'-0"	4
20'-0"	26'-0"	5
26'-0"	32'-0"	6

Notes:

- Space walkway brackets WF(A-N)4x3.06 and sign brackets WF(A-N)4x1.79 for efficiency and within limits shown:

f = 12" maximum, 4" minimum (End of sign to center of nearest bracket)

g = 12" maximum, 4" minimum (End of walkway grating to center of nearest support bracket)

h = 6'-0" maximum center to center of sign and/or walkway support brackets, WF(A-N)4x1.79 or WF(A-N)4x3.06

k = 2" maximum gap between adjacent walkway grating sections and handrail ends

- If walkway bracket at safety chain location is behind sign, add angle to bracket, see Alternate Safety Chain Attachment on Base Sheet OS-A-11.

For Details T and W, Section B-B and Grating Splice Details, see Base Sheet OS-A-10.

For Details D, F, G and P and Handrail Splice Details, see Base Sheet OS-A-11.

DESIGNED	
CHECKED	
DRAWN	
CHECKED	

EXAMINED	20
PASSED	ENGINEER OF BRIDGE DESIGN
	ENGINEER OF BRIDGES AND STRUCTURES

NUMBER	REVISION	DATE

Structure Number	Station	a	b	c	d I-A	e	Walkway Grating and Handrail Lengths
5S0101072L182.2	N/A	N/A	N/A	N/A	N/A	N/A	77' - 9" *
5S0101057R239.9	582 + 20	N/A	N/A	N/A	N/A	N/A	62' - 9" *
5S0101074R178.7	1824 + 00	N/A	20' - 0"	30' - 0"	N/A	N/A	79' - 9" *
5S0921074R214.0	1913 + 00	N/A	16' - 0"	N/A	N/A	N/A	87' - 6" *
*Length shown is for internal truss grating to be installed. Structure No. 5S0101074R178.7 includes the installation of walkway, walkway support brackets, handrail and light support channels.							
Structure No. 5S0101074R178.7 includes the replacement of walkway, walkway support brackets, handrail and light support channels.							

OVERHEAD SIGN STRUCTURES  
ALUMINUM WALKWAY DETAILS

District 5  
Overhead Sign Structure  
Repair and Replacement