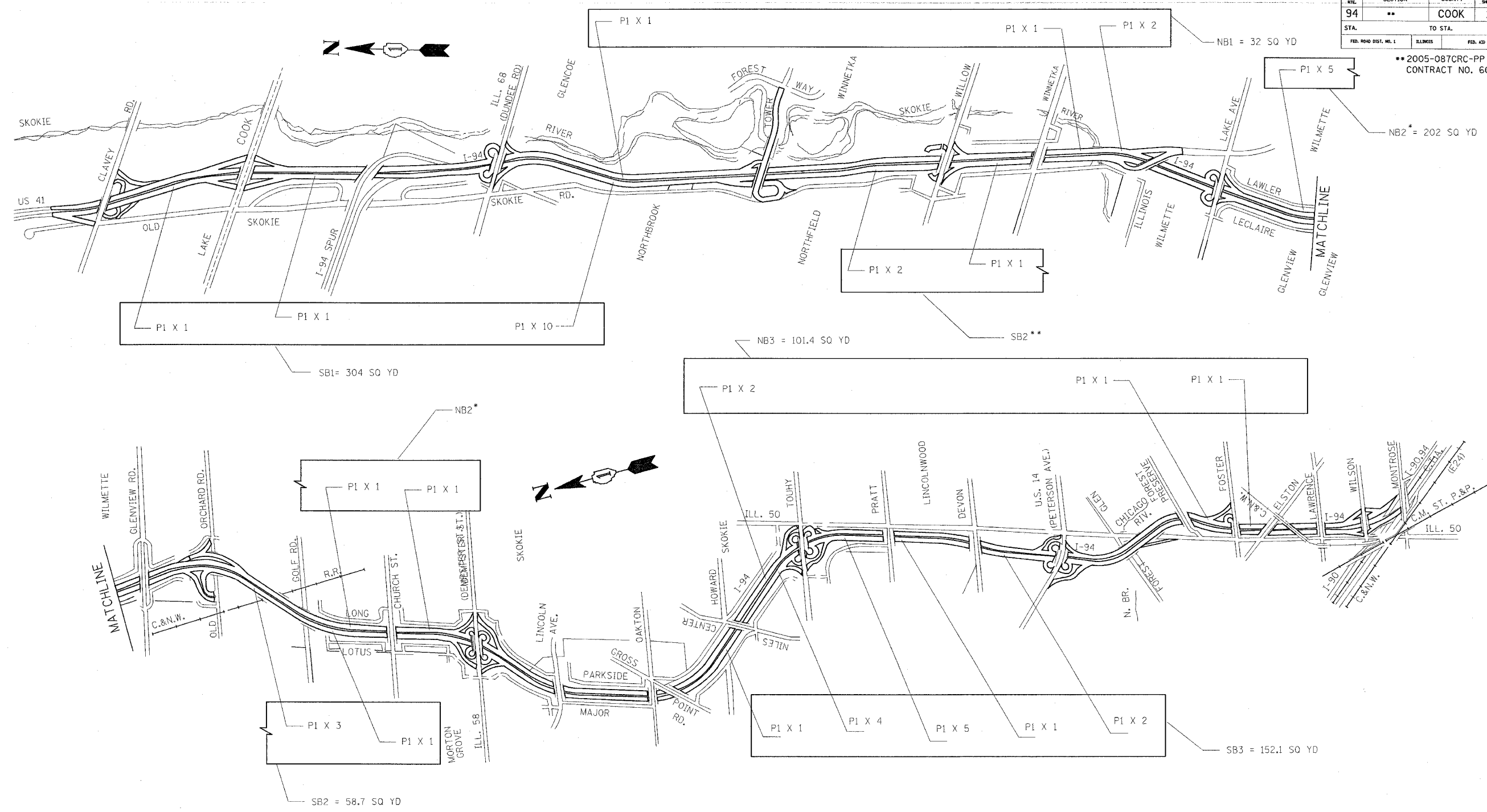
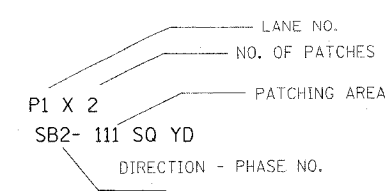


P.A. I. NO.	SECTION	COUNTY	TOTAL SHEETS	SHEET NO.
94	**	COOK	19	4
STA.	TO STA.			
FED. ROAD DIST. NO. 1	ILLINOIS	FED. AID PROJECT		

\*\*2005-087CRC-PP  
CONTRACT NO. 60B08



**LEGEND**



**SUGGESTED STAGING:**

SAWCUTTING TO BE DONE ON WEEKNIGHTS PER THE HOURS GIVEN IN THE SPECIAL PROVISION "KEEPING THE EXPRESSWAY OPEN TO TRAFFIC". PATCHING SHALL BE DONE PER FULL WEEKEND CLOSURE HOURS. CLOSE LANE 1 PER HWY STDS 701400 & 701401. MAXIMUM LENGTH OF ANY CLOSURE IS 4 MILES. MINIMUM GAP BETWEEN CONSECUTIVE CLOSURES IS 4 MILES. PATCHING IN NB & SB LANES MAY BE DONE SIMULTANEOUSLY.

**SUGGESTED LANE CLOSURES:**

- NB1 - PATCHES BETWEEN IL 68 (DUNDEE RD) AND LAKE AVE
- NB2 - PATCHES BETWEEN LAKE AVE AND IL 58 (DEMPSTER)
- NB3 - PATCHES BETWEEN FOSTER AND NILES CENTER RD
- SB1 - PATCHES BETWEEN CLAVEY AND TOWER RDS
- SB2 - PATCHES BETWEEN TOWER RD AND CHURCH ST
- SB3 - PATCHES BETWEEN OAKTON AND US 14 (PETERSON)

REVISIONS	
NAME	DATE
A.A	5-18-06

ILLINOIS DEPARTMENT OF TRANSPORTATION  
 INTERSTATE 94 (EDENS EXPRESSWAY)  
 FROM LAWRENCE AVE. TO LAKE-COOK ROAD  
 TRAFFIC CONTROL PLAN  
 STAGE I - LANE 1

SCALE: NONE  
 DATE: 5/22/2006  
 DRAWN BY C.A.D.D.  
 CHECKED BY

5/22/2006  
 s:\p\project\94\2506\sh...rdwy.cgn