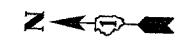
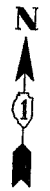
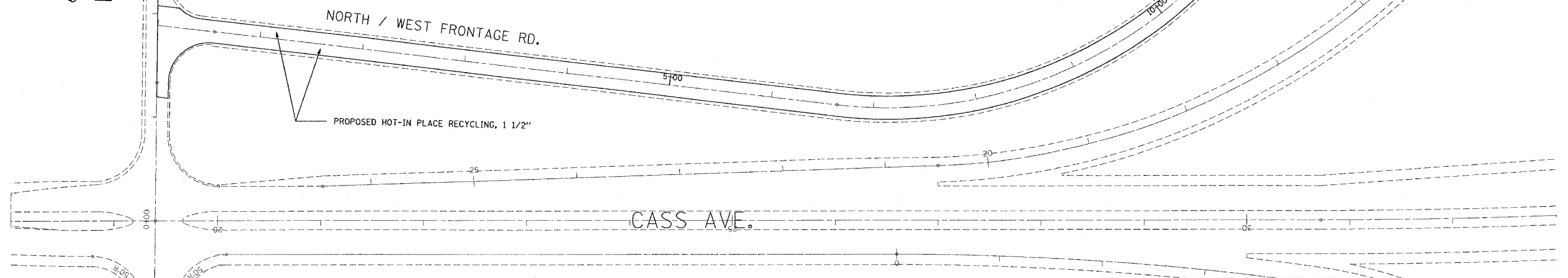


F.A.L. RTE.	SECTION	COUNTY	TOTAL SHEETS	SHEET NO.
55	2006-017 RS	DUPAGE & WILL	17	5
STA. 0+00		TO STA. 41+26		
FED. ROAD DIST. NO. 1 ILLINOIS HIGHWAY PROJECT				

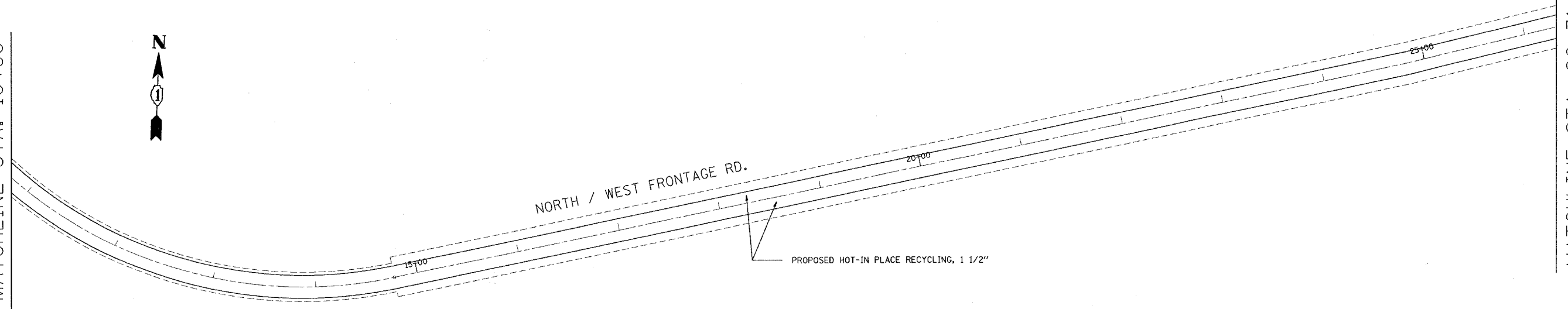
MATCHLINE STA. 10+80



IMPROVEMENT BEGINS STATION 0+00



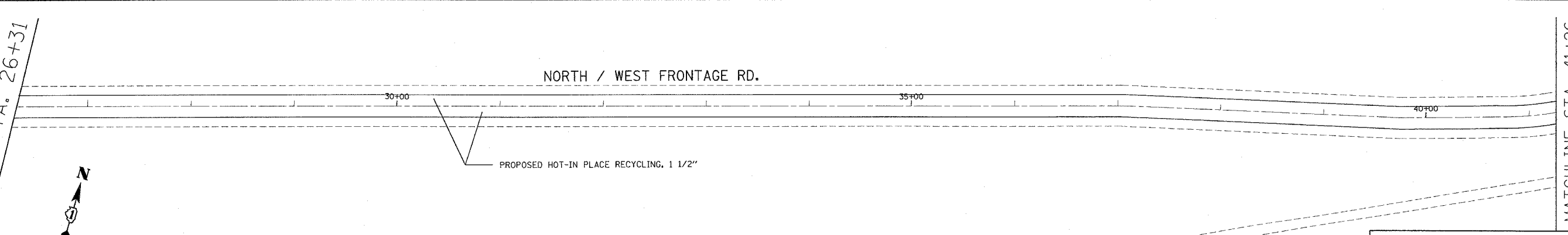
MATCHLINE STA. 10+80



MATCHLINE STA. 26+31



MATCHLINE STA. 26+31



MATCHLINE STA. 41+26

NOTE: AGGREGATE SHOULDERS TO BE DONE BY OTHERS

I-55

REVISIONS	
NAME	DATE

ILLINOIS DEPARTMENT OF TRANSPORTATION

LOCATION 1: CLARENDON HILLS RD. TO CASS AVE.
(NORTH / WEST FRONTAGE RD.)

SCALE: VERT. 1"=50'
HORIZ. 1"=50'

DATE 5/4/2006

DRAWN BY
CHECKED BY

5/4/2006 c:\p\projects\60b41\31068\design-aa.dgn

VI=