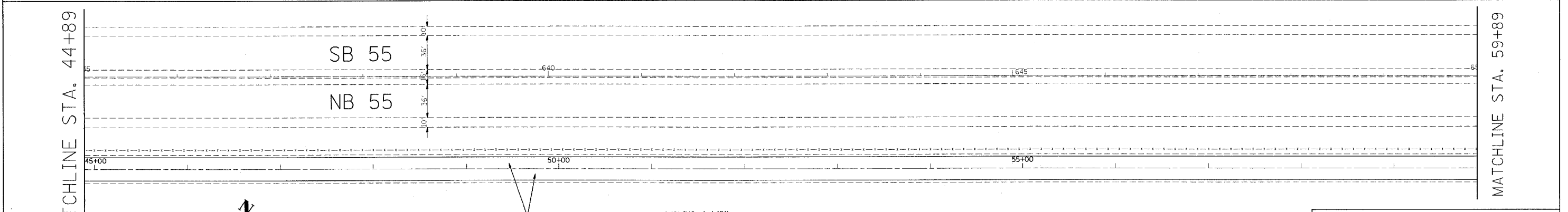
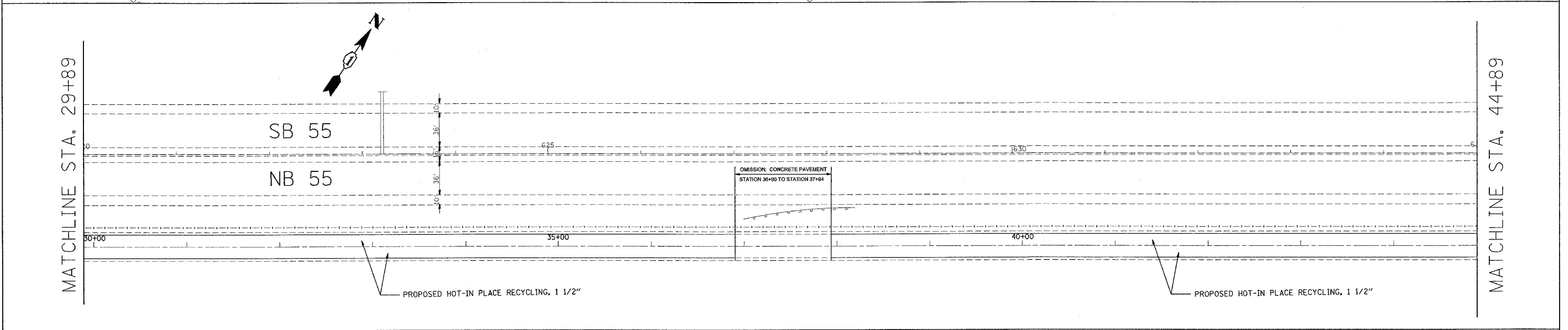
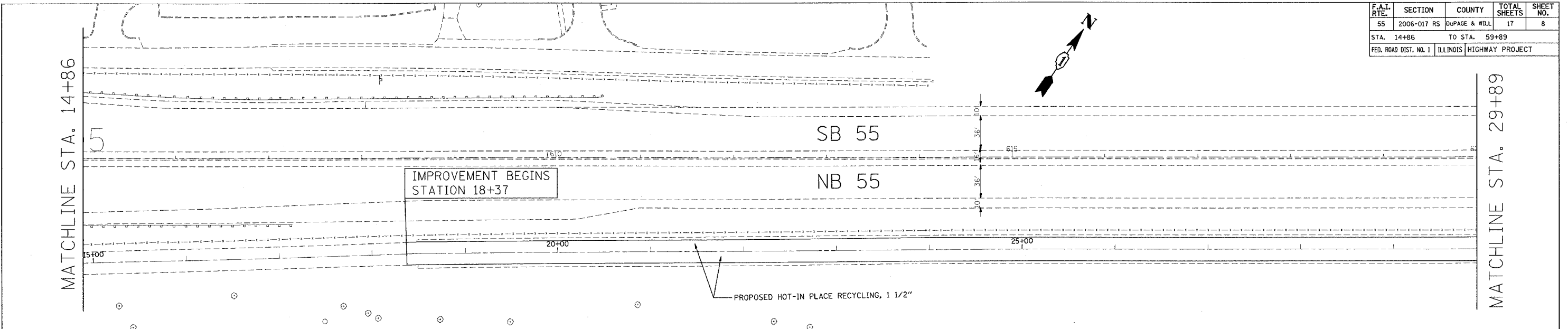


F.A.I. RTE.	SECTION	COUNTY	TOTAL SHEETS	SHEET NO.
55	2006-017 RS	DUPAGE & WILL	17	8
STA. 14+86		TO STA. 59+89		
FED. ROAD DIST. NO. 1		ILLINOIS HIGHWAY PROJECT		



NOTE: AGGREGATE SHOULDERS TO BE DONE BY OTHERS.

REVISIONS	
NAME	DATE

ILLINOIS DEPARTMENT OF TRANSPORTATION

LOCATION 2: JOLIET RD. TO IL 53 (SOUTH FRONTAGE RD.)

SCALE: VERT. 1"=50'
HORIZ. 1"=50'

DATE 5/4/2006

DRAWN BY _____
CHECKED BY _____

5/4/2006
c:\p\ro\ject\sb\131068\design-ca.dgn
REF
REF

VI=