

F.A.I. RTE.	SECTION	COUNTY	TOTAL SHEETS	SHEET NO.
55	2006-017 RS	DUPAGE & WILL	17	1
STA. +		TO STA. +		
FED. ROAD DIST. NO. 1		ILLINOIS		HIGHWAY PROJECT

STATE OF ILLINOIS  
DEPARTMENT OF TRANSPORTATION  
DIVISION OF HIGHWAYS

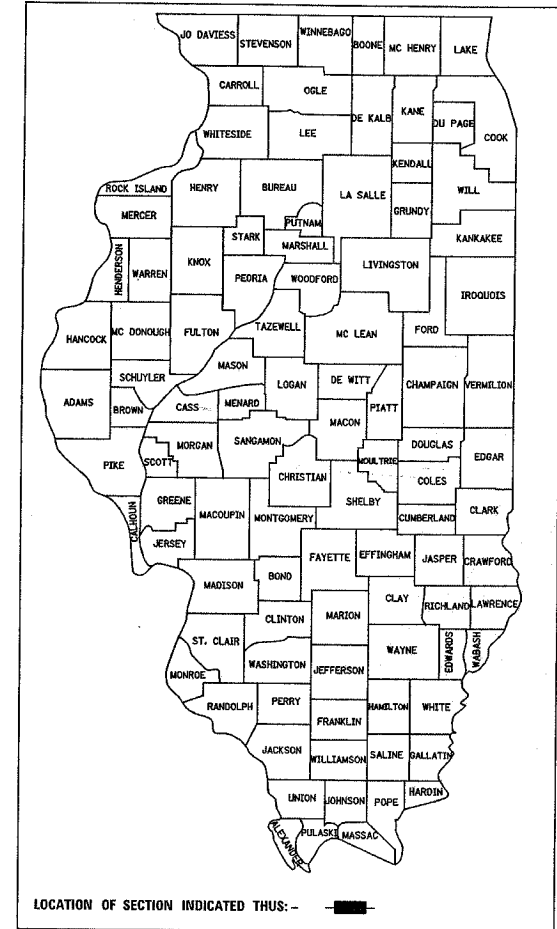
# PROPOSED HIGHWAY PLANS

F.A.I. 55: INTERSTATE I-55 (FRONTAGE ROADS)  
SECTION: 2006-017 RS

LOC. 1: CLARENDON HILLS RD. TO CASS AVE. (W. FRONTAGE RD.)  
LOC. 2: JOLIET RD. TO IL 53 (S. FRONTAGE RD.)  
LOC. 3: AIRPORT RD. TO RENWICK RD. (E. FRONTAGE RD.)

PAVEMENT REHABILITATION  
DuPAGE & WILL COUNTIES  
C-91-331-06

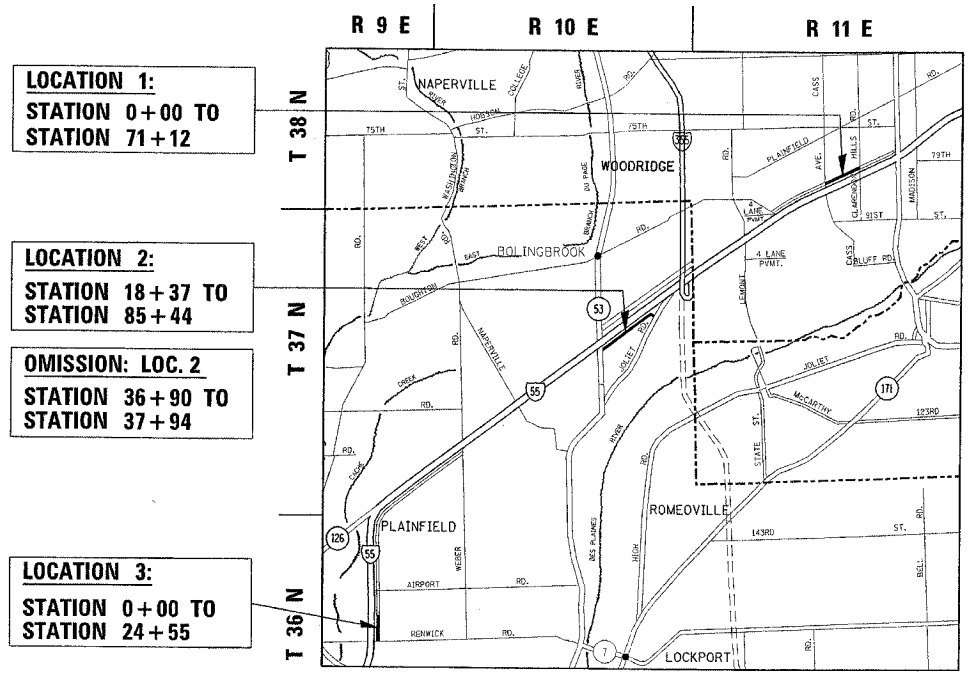
D-91-331-06



FOR INDEX OF SHEETS, SEE SHEET NO. 2

IMPROVEMENTS LOCATED IN THE VILLAGES OF  
LEMONT, DARIEN, BOLINGBROOK, AND ROMEOVILLE

DISTRICT ONE - DESIGN / PLAN PREPARATION ENGINEER KEN ENG / JENPAI CHANG (847) 705-4432



**LOCATION 1:**  
STATION 0+00 TO  
STATION 71+12

**LOCATION 2:**  
STATION 18+37 TO  
STATION 85+44

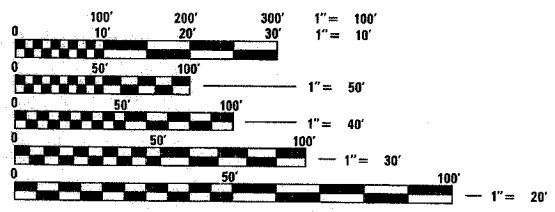
**OMISSION: LOC. 2**  
STATION 36+90 TO  
STATION 37+94

**LOCATION 3:**  
STATION 0+00 TO  
STATION 24+55



**TRAFFIC DATA**

LOC. 1: 2005 ADT = 2,900  
LOC. 2: 2004 ADT = 8,900  
LOC. 3: N/A



FULL SIZE PLANS HAVE BEEN PREPARED USING STANDARD ENGINEERING SCALES, REDUCED SIZED PLANS WILL NOT CONFORM TO STANDARD SCALES, IN MAKING MEASUREMENTS ON REDUCED PLANS, THE ABOVE SCALES MAY BE USED.

CONTRACT NO. 60B41

DOWNERS GROVE, DuPAGE, AND PLAINFIELD TOWNSHIPS

LOCATION 1: GROSS & NET LENGTH OF IMPROVEMENT = 7,112 FEET = 1.35 MILES  
LOCATION 2: GROSS LENGTH OF IMPROVEMENT = 6,707 FEET = 1.27 MILES  
NET LENGTH OF IMPROVEMENT = 6,603 FEET = 1.25 MILES  
LOCATION 3: GROSS & NET LENGTH OF IMPROVEMENT = 2,455 FEET = 0.46 MILE

STATE OF ILLINOIS  
DEPARTMENT OF TRANSPORTATION  
DIVISION OF HIGHWAYS

SUBMITTED May 2, 2006

Diane M. O'Keefe/ed  
DEPUTY DIRECTOR OF HIGHWAYS, REGION ENGINEER

Mike Hine/HD  
ENGINEER OF DESIGN AND ENVIRONMENT

Milton L. Sear, P.E./HD  
DIRECTOR OF HIGHWAYS, CHIEF ENGINEER

PRINTED BY THE AUTHORITY  
OF THE STATE OF ILLINOIS

FOR UTILITY INFORMATION  
CALL J.U.L.I.E. 1-800-892-0123  
"JOINT UTILITY LOCATION INFORMATION FOR EXCAVATION"

F.A.I. RTE.	SECTION	COUNTY	TOTAL SHEETS	SHEET NO.
55	2006-017 RS	DUPAGE & WILL	17	2
STA. 0+00		TO STA. 24+55		
FED. ROAD DIST. NO. 1		ILLINOIS HIGHWAY PROJECT		

INDEX OF SHEETS

- 1 COVER SHEET
- 2 INDEX OF SHEETS, STATE STANDARDS & GENERAL NOTES
- 3 SUMMARY OF QUANTITIES
- 4 EXISTING & PROPOSED TYPICAL SECTIONS
- 5-10 ROADWAY IMPROVEMENT PLANS
- 11 BUTT-JOINT AND BITUMINOUS TAPER DETAILS
- 12 PAVEMENT PATCHING FOR BITUMINOUS SURFACED PAVEMENT
- 13 TRAFFIC CONTROL & PROTECTION FOR SIDE ROADS, INTERSECTIONS, AND DRIVEWAYS
- 14 DISTRICT ONE TYPICAL PAVEMENT MARKINGS
- 15 TRAFFIC CONTROL AND PROTECTION AND TURN BAYS (TO REMAIN OPEN TO TRAFFIC)
- 16 TEMPORARY INFORMATION SIGNING
- 17 METHOD OF FLAGGING

GENERAL NOTES

BEFORE STARTING ANY EXCAVATION, THE CONTRACTOR SHALL CALL "JULIE" AT 1-800-892-0123 FOR FIELD LOCATIONS OF BURIED ELECTRIC, TELEPHONE AND GAS FACILITIES. (48 HOUR NOTIFICATION IS REQUIRED).

THE MAXIMUM GRADE DIFFERENTIAL BETWEEN LANES SHALL NOT EXCEED 40MM (1-1/2 INCHES) WHERE THE SPEED LIMIT IS 80 KM/H (45 MPH) OR LESS AND 25MM (1 INCH) WHERE THE SPEED LIMIT IS GREATER THAN 80 KM/H (45 MPH).

THE CONTRACTOR SHALL COORDINATE CONSTRUCTION ACTIVITIES WITH UTILITY COMPANIES.

CONTRACTOR WILL NOT BE ABLE TO SET UP A YARD OR FIELD OFFICE ON STATE PROPERTY WITHOUT WRITTEN PERMISSION FROM THE DEPARTMENT.

THE RESIDENT ENGINEER SHOULD CONTACT MS. CORA MATHIS AND DON CHIARUGI, AREA TRAFFIC FIELD ENGINEERS, AT (815) 485-6475 AND (847) 741-9857, RESPECTIVELY, PRIOR TO INSTALLING ANY PAVEMENT MARKING.

UNLESS OTHER CONDITIONS WARRANT EXTENDED LANE CLOSURE AS DETERMINED AND APPROVED IN WRITING BY THE ENGINEER OR AS PROVIDED FOR THE CONTRACT SPECIFICATIONS, OVERNIGHT LANE CLOSURES SHALL NOT BE ALLOWED FOR REHABILITATION IMPROVEMENTS INVOLVING DAYTIME HOT-IN-PLACE RECYCLING AND RESURFACING OPERATIONS.

STATE STANDARDS

- 000001-04 STANDARD SYMBOLS, ABBREVIATIONS AND PATTERNS
- 701006-02 OFF-ROAD OPERATIONS 2L, 2W, 4.5M (15') TO PAVEMENT EDGE FOR SPEEDS  $\geq$  45 MPH
- 701011-01 OFF-ROAD OPERATIONS 2L, 2W DAY ONLY FOR SPEEDS  $\geq$  45 MPH
- 701201-02 LANE CLOSURE 2L, 2W DAY ONLY ON-ROAD TO 600 MM (24") OFF-ROAD FOR SPEEDS  $\geq$  45 MPH
- 701301-02 LANE CLOSURE 2L, 2W SHORT TIME OPERATIONS
- 701306-01 LANE CLOSURE 2L, 2W SLOW MOVING OPERATIONS-DAY ONLY FOR SPEEDS  $\geq$  45 MPH
- 701311-02 LANE CLOSURE 2L, 2W MOVING OPERATIONS-DAY ONLY
- 701501-03 URBAN LANE CLOSURE 2L, 2W UNDIVIDED
- 702001-06 TRAFFIC CONTROL DEVICES

REVISIONS		ILLINOIS DEPARTMENT OF TRANSPORTATION
NAME	DATE	
		INDEX OF SHEETS, GENERAL NOTES, AND STATE STANDARDS

SCALE: VERT.      DRAWN BY  
 HORIZ.              CHECKED BY  
 DATE 5/3/2006

F.A.I. RTE.	SECTION	COUNTY	TOTAL SHEETS	SHEET NO.
55	2006-017 R5	DuPAGE & WILL	17	3
FED. ROAD DIST. NO. 1		ILLINOIS	HIGHWAY PROJECT	

SUMMARY OF QUANTITIES			TOTAL QUANTITIES	CONSTRUCTION TYPE CODE					
CODE NO	ITEM	UNIT		URBAN I 000 100% STATE	URBAN I 000 100% STATE	URBAN I 000 100% STATE			
			LOCATION 1 (DUPAGE CO.) CLARENDON HILLS TO CASS AVE.	LOCATION 2 (WILL CO.) JOLIET RD. TO IL RTE. 53	LOCATION 3 (WILL CO.) AIRPORT RD. TO RENWICK RD.				
40600200	BITUMINOUS MATERIALS (PRIME COAT)	TON	17	7.5	8	1.5			
40600300	AGGREGATE (PRIME COAT)	TON	79	36	37	6			
40600400	MIXTURE FOR CRACKS, JOINTS, AND FLANGEWAYS	TON	12	5.5	5.5	1			
44201753	CLASS D PATCHES, TYPE II, 9 INCH	SQ YD	72	12	42	18			
44201757	CLASS D PATCHES, TYPE III, 9 INCH	SQ YD	159		117	42			
44201759	CLASS D PATCHES, TYPE IV, 9 INCH	SQ YD	467	305		162			
67000400	ENGINEER'S FIELD OFFICE, TYPE A	CAL MO	2	0.68	0.66	0.66			
67100100	MOBILIZATION	L SUM	1	0.34	0.33	0.33			
70100450	TRAFFIC CONTROL AND PROTECTION, STANDARD 701201	L SUM	1	0.34	0.33	0.33			
70100460	TRAFFIC CONTROL AND PROTECTION, STANDARD 701306	L SUM	1	0.33	0.34	0.33			
70102620	TRAFFIC CONTROL AND PROTECTION, STANDARD 701501	L SUM	1	0.33	0.33	0.34			
70103815	TRAFFIC CONTROL SURVEILLANCE	CAL DA	6	2	2	2			
* 78100100	RAISED REFLECTIVE PAVEMENT MARKER	EACH	300	120	100	80			
78300200	RAISED REFLECTIVE PAVEMENT MARKER REMOVAL	EACH	70	70					
X0322052	ASPHALT REJUVENATING AGENT	GALLON	3882	1757	1830	295			
X0322256	TEMPORARY INFORMATION SIGNING	SQ FT	154.2	51.4	51.4	51.4			
X0324096	HOT IN-PLACE RECYCLING	SQ YD	38813	17570	18298	2945			
70300100	SHORT-TERM PAVEMENT MARKING	FOOT	54,085	34,200	16,360	5525			
78000200	THERMOPLASTIC PAVEMENT MARKING - LINE 4"	FOOT	54,085	34,200	16,360	5525			
78000400	THERMOPLASTIC PAVEMENT MARKING - LINE 12"	FOOT	500	500					
78000650	THERMOPLASTIC PAVEMENT MARKING - LINE 24"	FOOT	22	22					
XX003140	SHORT-TERM PAVEMENT MARKING REMOVAL	FOOT	54,085	34,200	16,360	5525			

SUMMARY OF QUANTITIES			TOTAL QUANTITIES	CONSTRUCTION TYPE CODE					
CODE NO	ITEM	UNIT							

\*SPECIALTY ITEMS

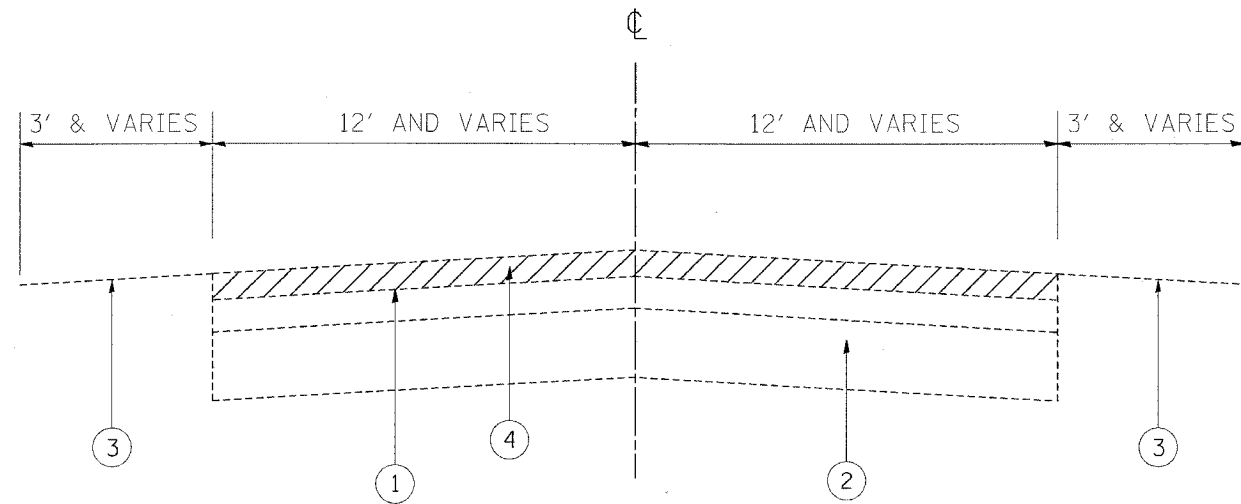
REVISIONS	
NAME	DATE

ILLINOIS DEPARTMENT OF TRANSPORTATION  
SUMMARY OF QUANTITIES

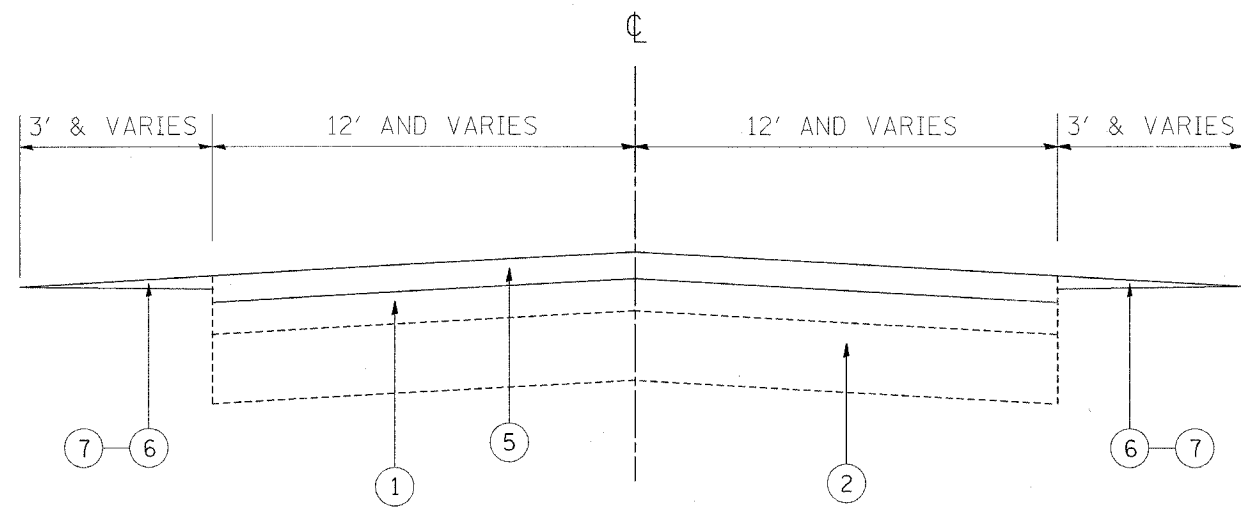
PLOT DATE: 5/3/2006

5/3/2006 10:10:03 AM

F.A.I. RTE.	SECTION	COUNTY	TOTAL SHEETS	SHEET NO.
55	2006-017 RS	DUPAGE & WILL	17	4
STA. +		TO STA. +		
FED. ROAD DIST. NO. 1		ILLINOIS HIGHWAY PROJECT		



EXISTING TYPICAL SECTION



PROPOSED TYPICAL SECTION

LEGEND

- ① EXISTING BITUMINOUS PAVEMENT, 4" (±)
- ② EXISTING AGGREGATE BASE COURSE, 5" (±)
- ③ EXISTING AGGREGATE SHOULDER
- ④ PROPOSED BITUMINOUS SURFACE REMOVAL, 1 1/2"
- ⑤ PROPOSED HOT IN PLACE RECYCLING (1 1/2"), (SEE SPECIAL PROVISION)
- ⑥ PROPOSED GRADING & SHAPING SHOULDER - *BY OTHERS* (WHERE AS DIRECTED BY THE ENGINEER)
- ⑦ PROPOSED AGGREGATE SHOULDER, TYPE B - *BY OTHERS*

BITUMINOUS MIXTURE REQUIREMENTS

MIXTURE USE	AC/PG	MAX RAP. (%)	AIR VOIDS (%)
CLASS D PATCHES, BINDER, IL-19 MM	PG 64-22	15%	4% @ 70 GYR.

PLOT DATE = 5/4/2006  
 FILE NAME = c:\projects\60b41\design\ee.dgn  
 PLOT SCALE = 3/8" = 1' / IN.  
 REFERENCE = #REF#

REVISIONS		ILLINOIS DEPARTMENT OF TRANSPORTATION
NAME	DATE	
		EXISTING & PROPOSED TYPICAL SECTION

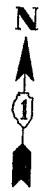
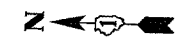
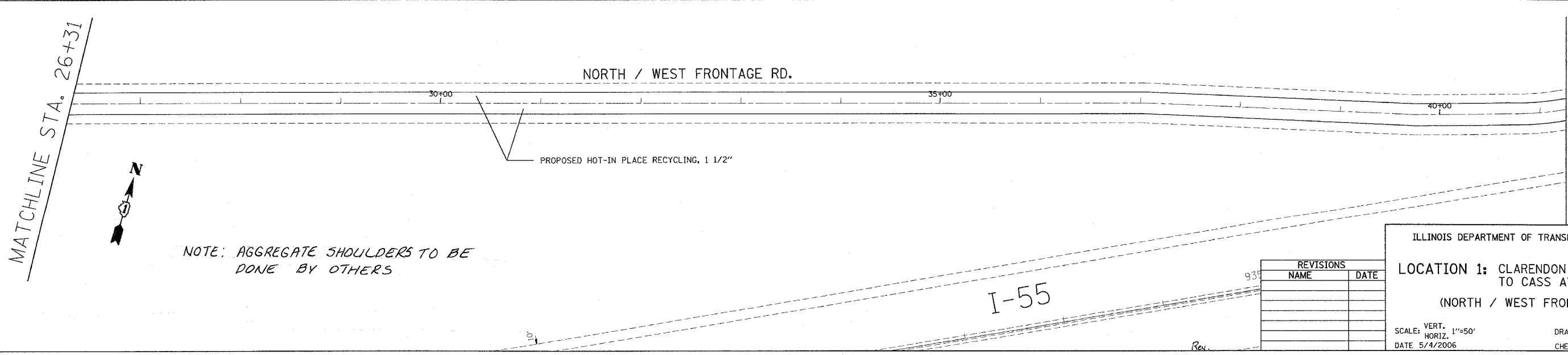
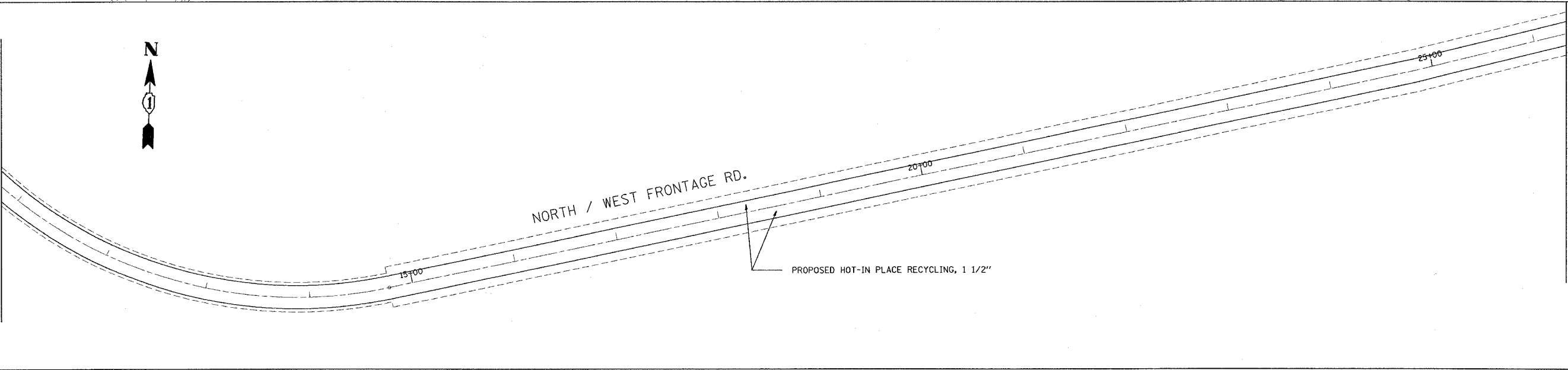
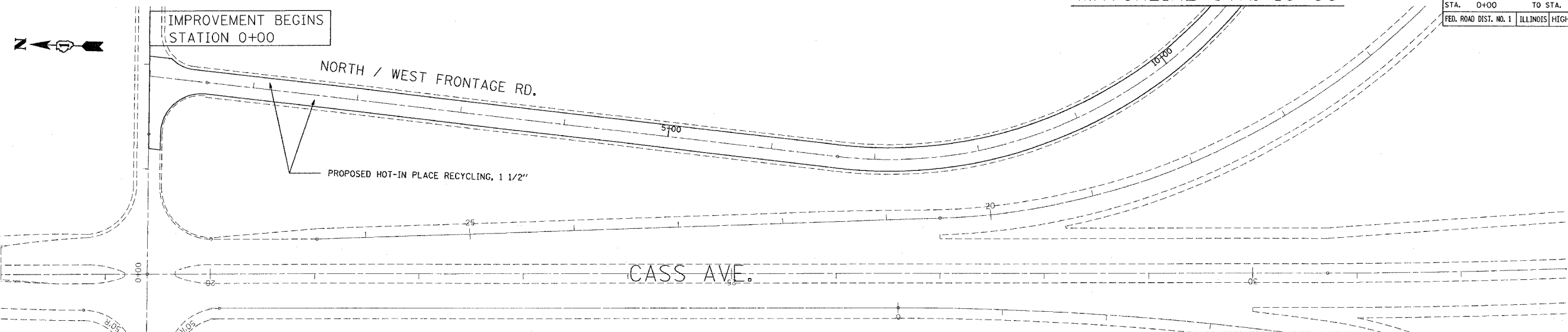
SCALE: VERT. / HORIZ. / DATE 5/4/2006

DRAWN BY / CHECKED BY

Rev

F.A.L. RTE.	SECTION	COUNTY	TOTAL SHEETS	SHEET NO.
55	2006-017 RS	DUPAGE & WILL	17	5
STA. 0+00		TO STA. 41+26		
FED. ROAD DIST. NO. 1   ILLINOIS   HIGHWAY PROJECT				

MATCHLINE STA. 10+80

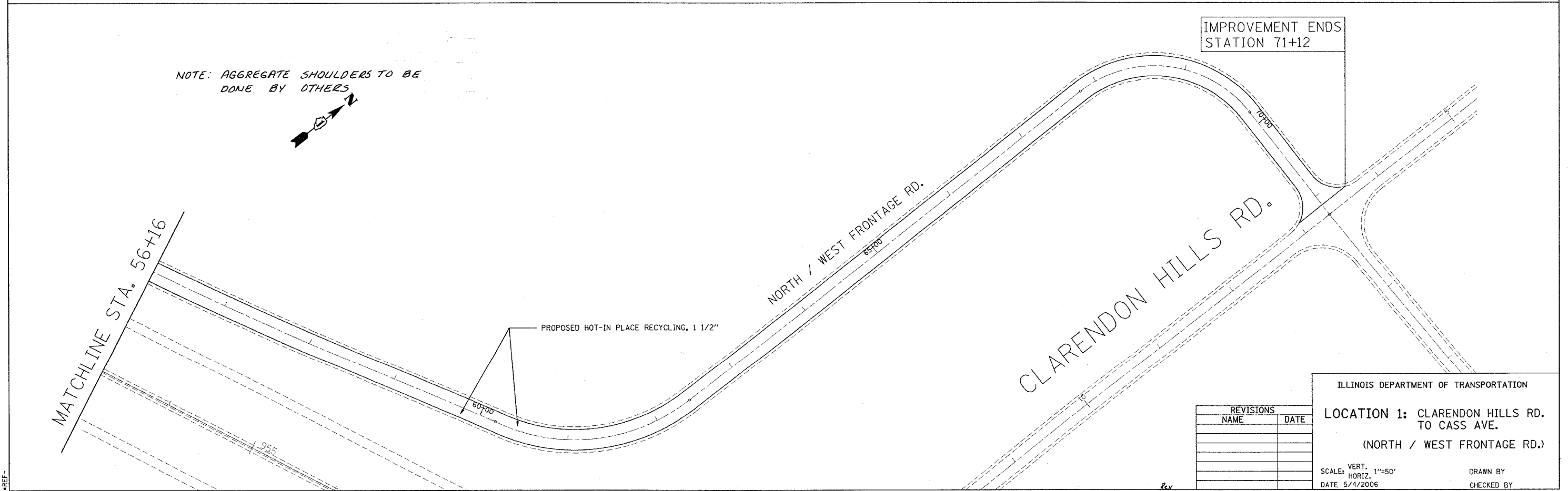
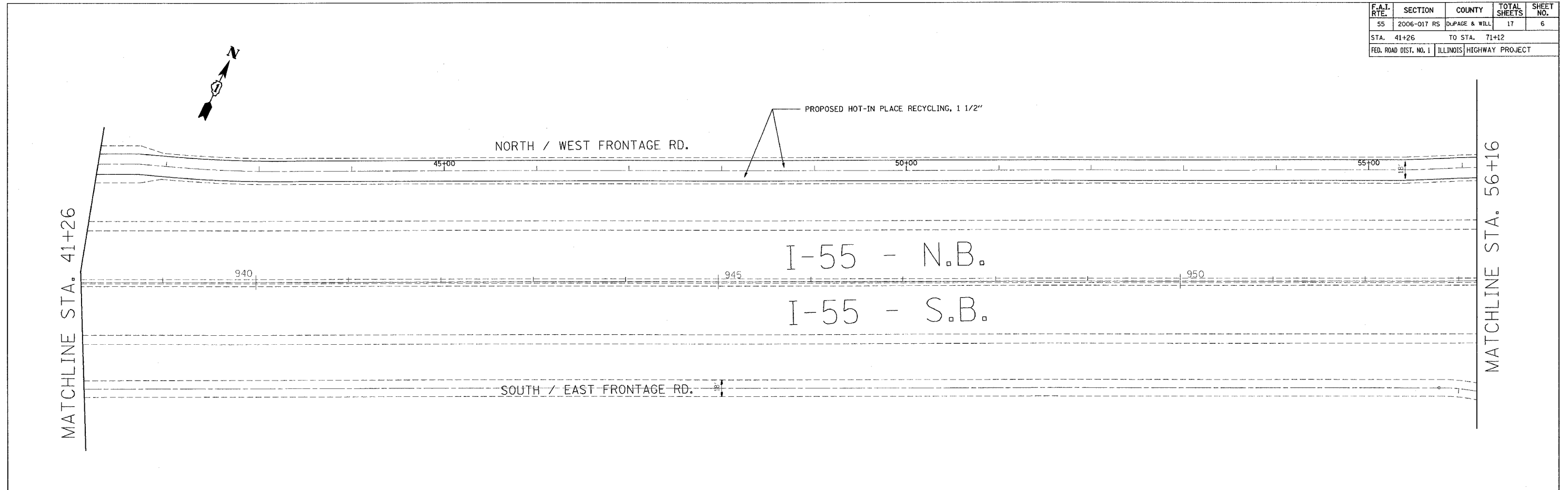


REVISIONS	
NAME	DATE

ILLINOIS DEPARTMENT OF TRANSPORTATION  
**LOCATION 1: CLARENDON HILLS RD. TO CASS AVE.**  
 (NORTH / WEST FRONTAGE RD.)  
 SCALE: VERT. 1"=50'  
 HORIZ. 1"=50'  
 DATE 5/4/2006  
 DRAWN BY  
 CHECKED BY

5/4/2006  
 c:\projects\60b41\31068\design-aa.dgn  
 REF-  
 VI=

F.A.I. RTE.	SECTION	COUNTY	TOTAL SHEETS	SHEET NO.
55	2006-017 RS	DUPAGE & WILL	17	6
STA. 41+26		TO STA. 71+12		
FED. ROAD DIST. NO. 1		ILLINOIS HIGHWAY PROJECT		



5/4/2006  
 c:\projects\61331068\design-aa.dgn  
 \*REF-  
 \*REF-

REVISIONS	
NAME	DATE

ILLINOIS DEPARTMENT OF TRANSPORTATION

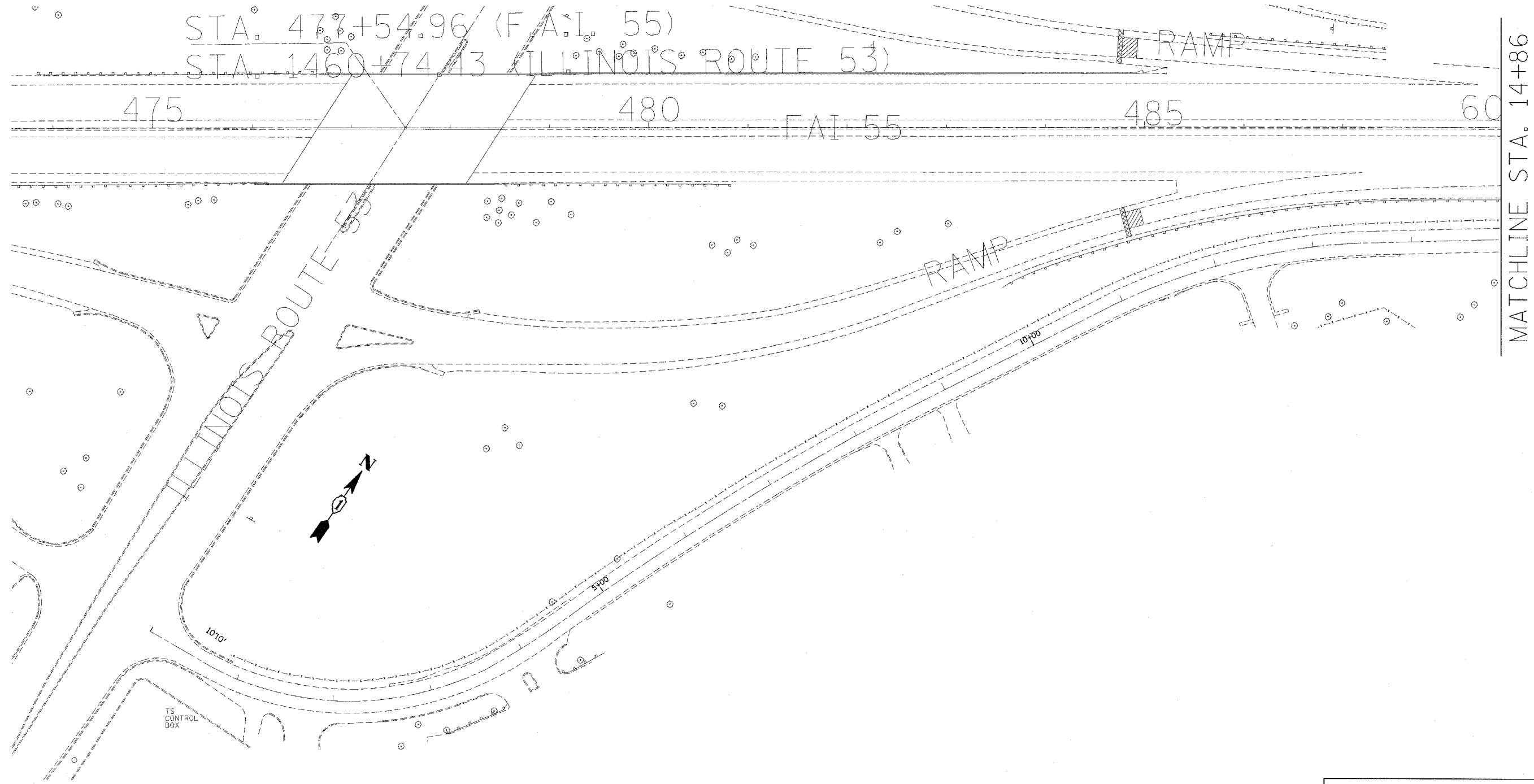
**LOCATION 1: CLARENDON HILLS RD. TO CASS AVE.**  
 (NORTH / WEST FRONTAGE RD.)

SCALE: VERT. 1"=50'  
 HORIZ. 1"=50'  
 DATE 5/4/2006

DRAWN BY  
 CHECKED BY

VI#

F.A.I. RTE.	SECTION	COUNTY	TOTAL SHEETS	SHEET NO.
55	2006-017 RS	DUPAGE & WILL	17	7
STA. 0+00		TO STA. 14+86		
FED. ROAD DIST. NO. 1		ILLINOIS HIGHWAY PROJECT		



5/4/2006  
 c:\projects\613106\design-co.dgn  
 \*REF-  
 \*REF-

VI=

REVISIONS	
NAME	DATE

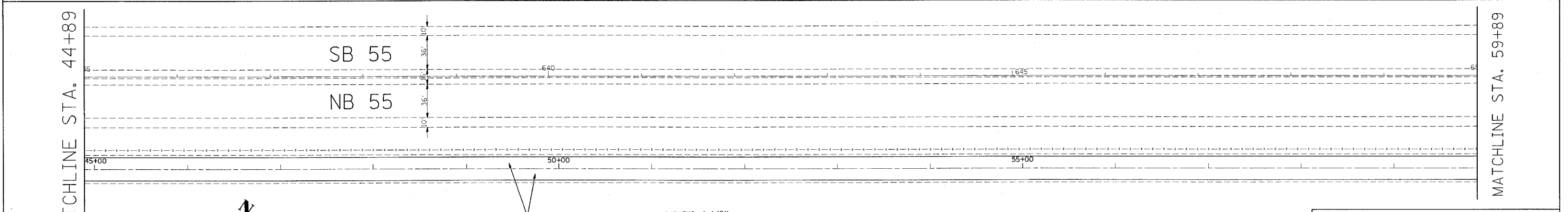
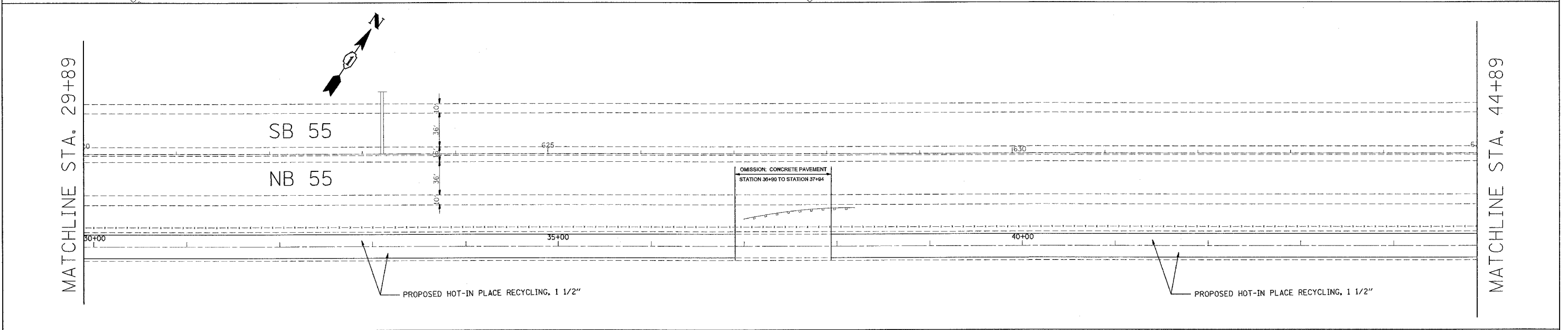
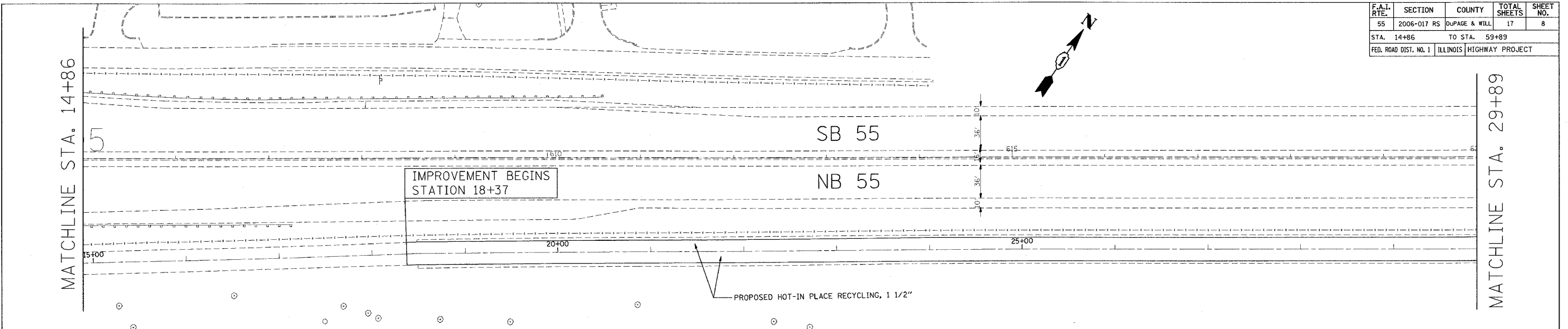
ILLINOIS DEPARTMENT OF TRANSPORTATION

**LOCATION 2: JOLIET RD. TO IL 53**  
 (SOUTH FRONTAGE RD.)

SCALE: VERT. 1"=50'  
 HORIZ. 1"=50'  
 DATE 5/4/2006

DRAWN BY  
 CHECKED BY

F.A.I. RTE.	SECTION	COUNTY	TOTAL SHEETS	SHEET NO.
55	2006-017 RS	DUPAGE & WILL	17	8
STA. 14+86		TO STA. 59+89		
FED. ROAD DIST. NO. 1		ILLINOIS HIGHWAY PROJECT		



NOTE: AGGREGATE SHOULDERS TO BE DONE BY OTHERS.

REVISIONS	
NAME	DATE

ILLINOIS DEPARTMENT OF TRANSPORTATION

LOCATION 2: JOLIET RD. TO IL 53 (SOUTH FRONTAGE RD.)

SCALE: VERT. 1"=50'  
HORIZ. 1"=50'

DATE 5/4/2006

DRAWN BY \_\_\_\_\_  
CHECKED BY \_\_\_\_\_

5/4/2006  
c:\p\ro\ject\sb\131068\design-ca.dgn  
\*REF\*  
\*REF\*

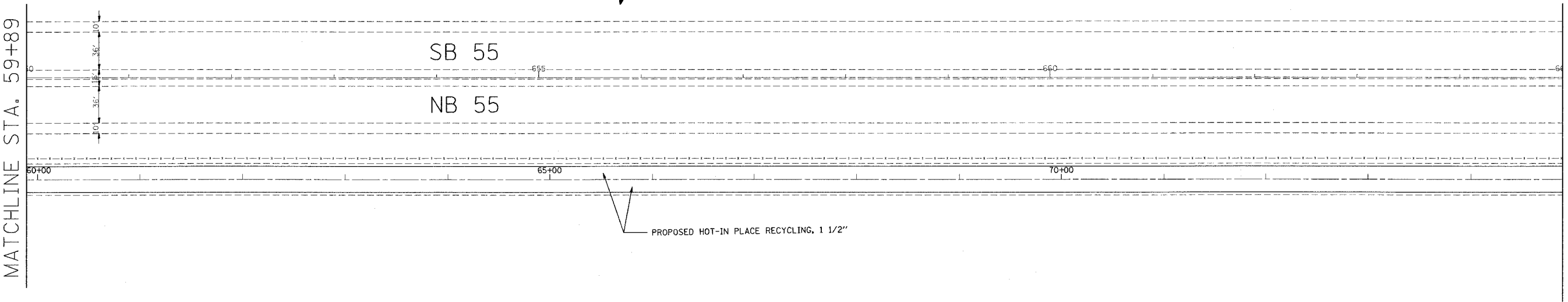
VI=



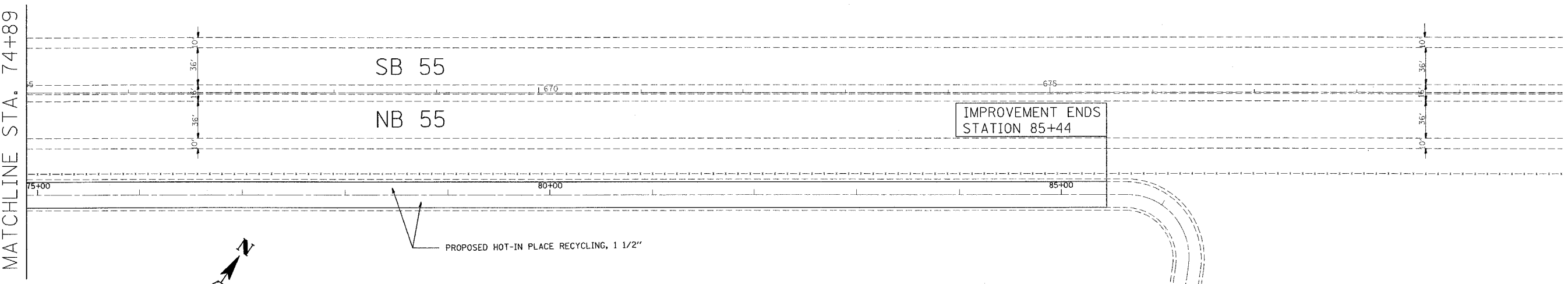
F.A.I. RTE.	SECTION	COUNTY	TOTAL SHEETS	SHEET NO.
55	2006-017 RS	DUPAGE & WILL	17	9
STA. 59+89		TO STA. 85+44		
FED. ROAD DIST. NO. 1		ILLINOIS HIGHWAY PROJECT		

MATCHLINE STA. 59+89

MATCHLINE STA. 74+89

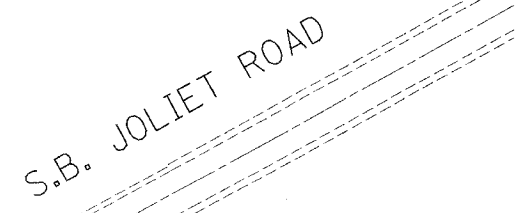


MATCHLINE STA. 74+89



NOTE: AGGREGATE SHOULDERS TO BE DONE BY OTHERS.

IMPROVEMENT ENDS  
STATION 85+44

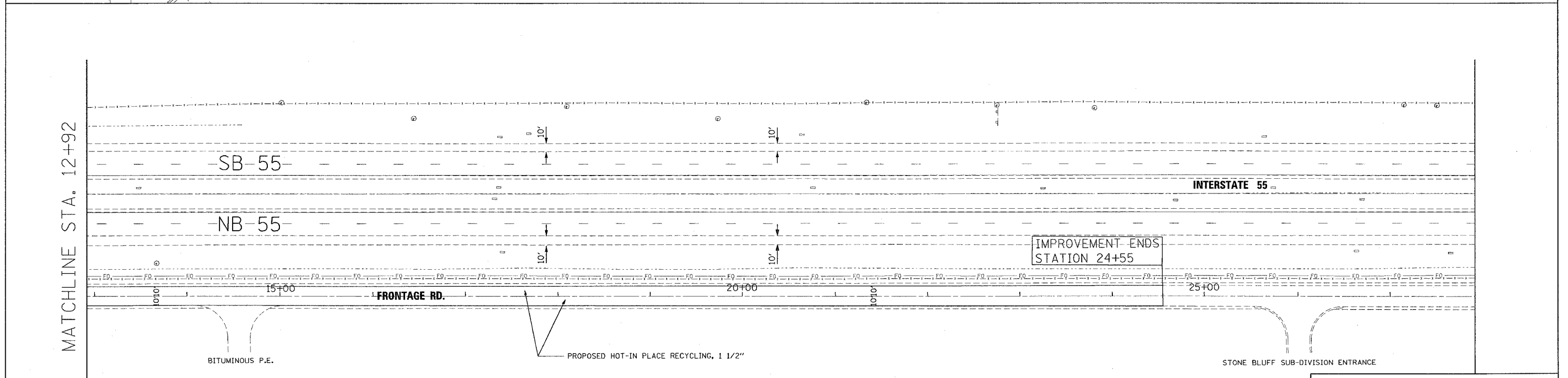
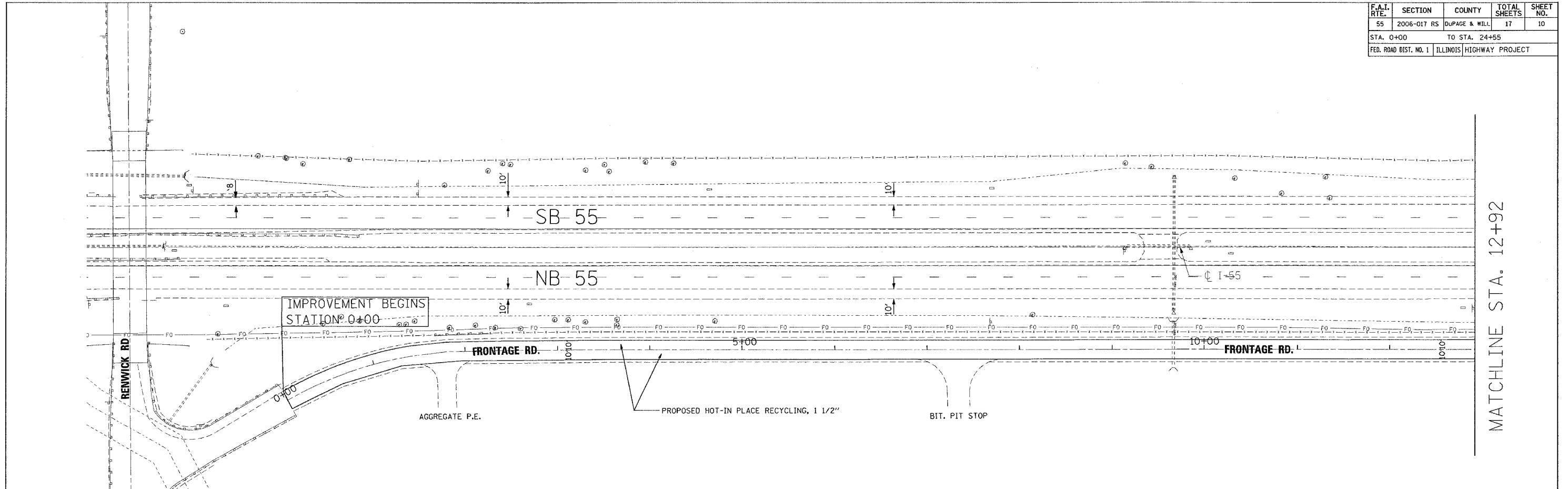


REVISIONS	
NAME	DATE

ILLINOIS DEPARTMENT OF TRANSPORTATION  
**LOCATION 2: JOLIET RD. TO IL 53 (SOUTH FRONTAGE RD.)**  
 SCALE: VERT. 1"=50'  
 HORIZ. 1"=50'  
 DATE 5/4/2006  
 DRAWN BY \_\_\_\_\_  
 CHECKED BY \_\_\_\_\_

Rev.

F.A.I. RTE.	SECTION	COUNTY	TOTAL SHEETS	SHEET NO.
55	2006-017 RS	DUPAGE & WILL	17	10
STA. 0+00		TO STA. 24+55		
FED. ROAD DIST. NO. 1		ILLINOIS HIGHWAY PROJECT		



NOTE: AGGREGATE SHOULDERS TO BE DONE BY OTHERS.

REVISIONS	
NAME	DATE

ILLINOIS DEPARTMENT OF TRANSPORTATION

LOCATION 3: PLAINFIELD/AIRPORT/LOCKPORT RD. TO RENWICK RD. (EAST FRONTAGE RD.)

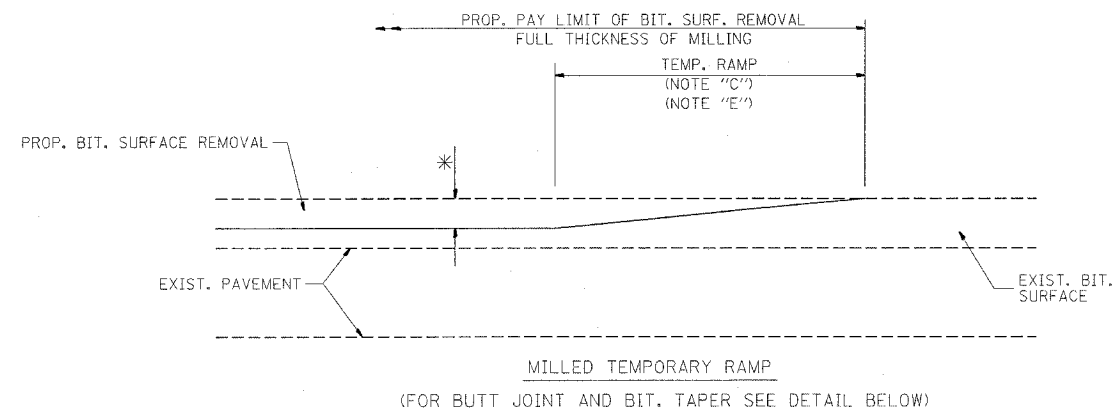
SCALE: VERT. 1"=50'  
HORIZ. 1"=50'

DATE 5/4/2006

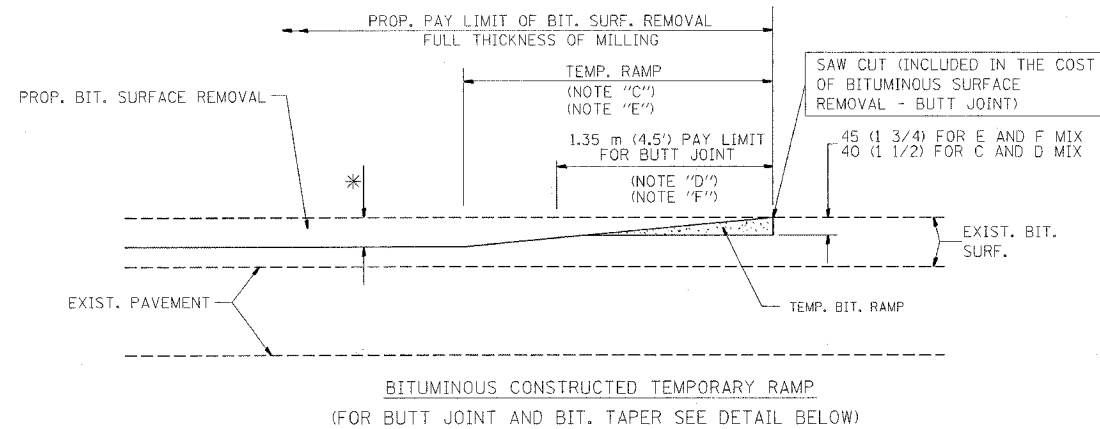
DRAWN BY \_\_\_\_\_  
CHECKED BY \_\_\_\_\_

5/4/2006  
c:\projects\60133106\design-aa.dgn  
\*REF-  
\*REF-

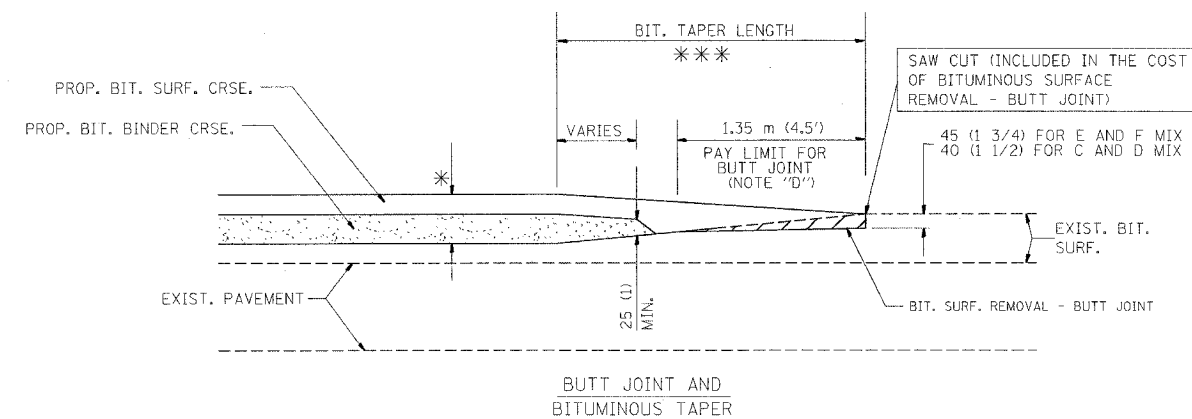
F.A.I. RTE.	SECTION	COUNTY	TOTAL SHEETS	SHEET NO.
55	2006-017 RS	DuPage + Will	17	11
STA.		TO STA.		
FED. ROAD DIST. NO.	ILLINOIS	FED. AID PROJECT		



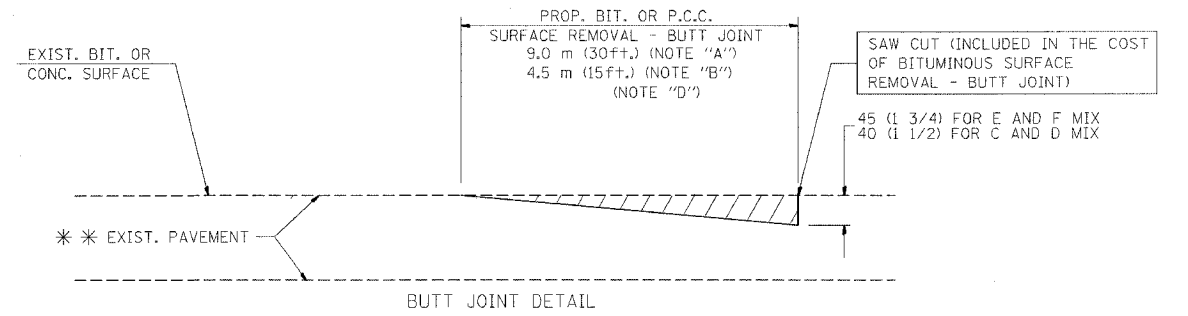
OPTION 1



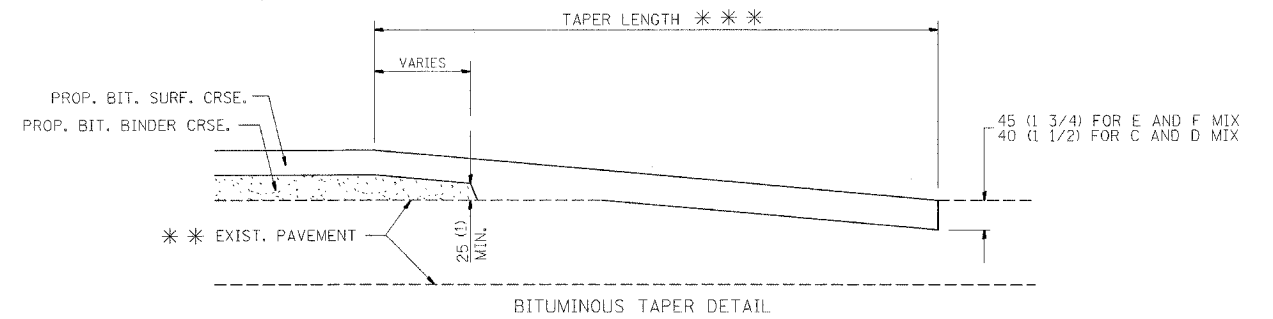
OPTION 2  
TYPICAL TEMPORARY RAMP



TYPICAL BUTT JOINT AND BITUMINOUS TAPER FOR MILLING AND RESURFACING



BUTT JOINT DETAIL



BITUMINOUS TAPER DETAIL

TYPICAL BUTT JOINT AND BITUMINOUS TAPER FOR RESURFACING ONLY

\*\*\* PC CONCRETE, BITUMINOUS OR BITUMINOUS RESURFACED PAVEMENT.

NOTES

- A: MAINLINE ROADWAYS AND MAJOR SIDE ROADS.
  - B: MINOR SIDE ROADS.
  - C: THE TEMP. RAMP SHALL BE CONSTRUCTED IMMEDIATELY UPON REMOVAL OF THE EXISTING BITUMINOUS SURFACE.
  - D: THE BUTT JOINT SHALL BE CONSTRUCTED IMMEDIATELY PRIOR TO PLACING THE PROPOSED BITUMINOUS COURSES.
  - E: TAPER THE TEMP. RAMP AT A RATE OF 900 (3 ft.) PER INCH OF MILLING THICKNESS.
  - F: INSTALLATION AND REMOVAL OF THE 1.35 m (4.5') TEMP. BIT. RAMP WILL BE PAID AS "BITUMINOUS SURFACE REMOVAL - BUTT JOINT".
  - G: SEE ARTICLE 406.18 AND 406.24 OF THE STANDARD SPECIFICATIONS FOR "BITUMINOUS AND PCC SURFACE REMOVAL, BUTT JOINT".
- \* SEE TYPICAL SECTIONS FOR MILLING THICKNESS.

\*\*\* 6.1 m (20') PER 25 (1) RESURFACING (NOTE "A")  
3.0 m (10') PER 25 (1) RESURFACING (NOTE "B")

ALL DIMENSIONS ARE IN MILLIMETERS (INCHES) UNLESS OTHERWISE SHOWN.

BASIS OF PAYMENT:

THE BUTT JOINT WILL BE PAID FOR PER SQUARE METER (SQUARE YARD.) AS "BITUMINOUS SURFACE REMOVAL - BUTT JOINT" OR AS "PORTLAND CEMENT CONCRETE SURFACE REMOVAL - BUTT JOINT".

REVISIONS	
NAME	DATE
M. DE YONG	6-13-90
M. DE YONG	7-3-90
M. DE YONG	3-27-92
R. SHAH	09/09/94
R. SHAH	10/25/94
A. ABBAS	03/21/97
M. GOMEZ	04/06/01

ILLINOIS DEPARTMENT OF TRANSPORTATION

BUTT JOINT AND BITUMINOUS TAPER DETAILS

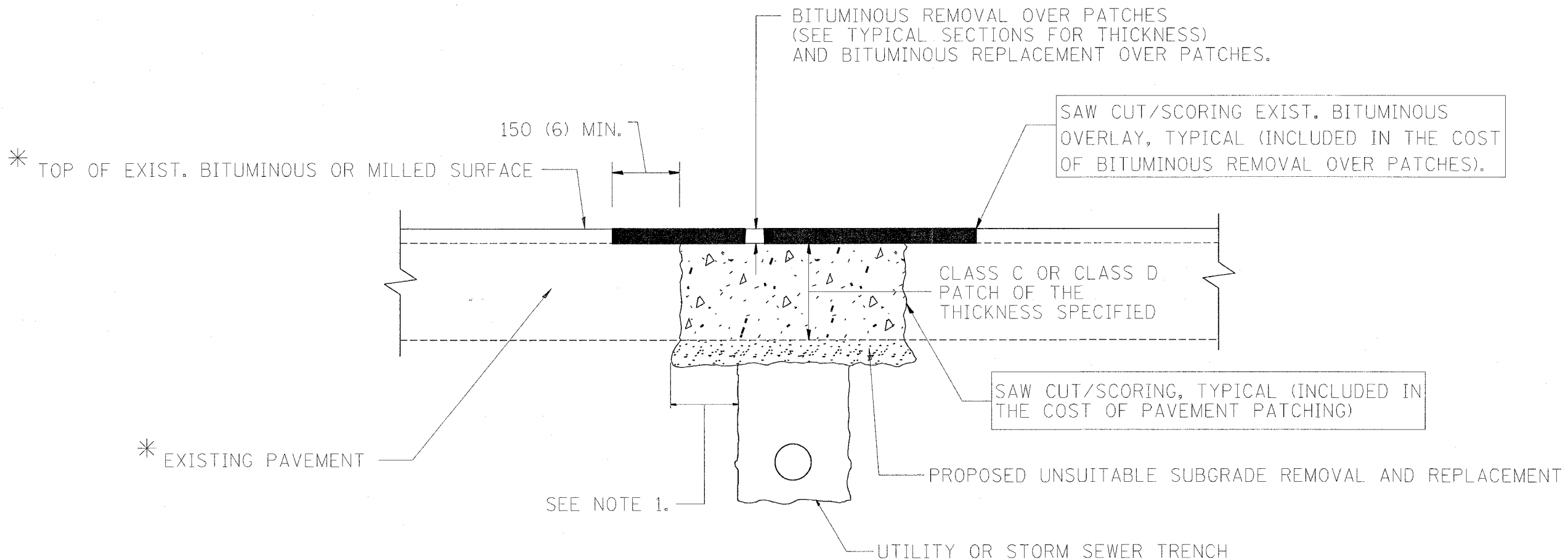
SCALE: VERT. HORIZ. DATE: 4/19/2006

DRAWN BY CHECKED BY

BD400-05 (VI=BD32)

REVISION DATE: 04/06/01

F.A.I. RTE.	SECTION	COUNTY	TOTAL SHEETS	SHEET NO.
55	2006-017AS	DeWitt	17	12
STA.		TO STA.		
FED. ROAD DIST. NO.	ILLINOIS	FED. AID PROJECT		



\* SEE TYPICAL SECTIONS FOR THICKNESS AND MATERIALS

**NOTES:**

1. THE WIDTH OF THE FULL DEPTH PATCH OVER A TRENCH SHALL BE 300 (12) WIDER ON EACH SIDE OF THE TRENCH.
2. FOR METHOD OF MEASUREMENT AND BASIS OF PAYMENT, SEE SPECIAL PROVISION "PATCHING WITH BITUMINOUS OVERLAY REMOVAL".

**SEQUENCE OF CONSTRUCTION**

1. REMOVE THE EXISTING BITUMINOUS MATERIAL OVER THE AREA TO BE PATCHED.
2. REMOVE AND REPLACE FULL DEPTH PATCHES
3. REPLACE BITUMINOUS MATERIAL OVER THE AREA TO BE PATCHED.

ALL DIMENSIONS ARE IN MILLIMETERS (INCHES) UNLESS OTHERWISE SHOWN.

REVISIONS	
NAME	DATE
R. SHAH	10/25/94
R. SHAH	01/14/95
R. SHAH	03/23/95
R. SHAH	04/24/95
A. HOUSEH	03/15/96
A. ABBAS	03/21/97
A. ABBAS	01/20/98
ART ABBAS	04/27/98

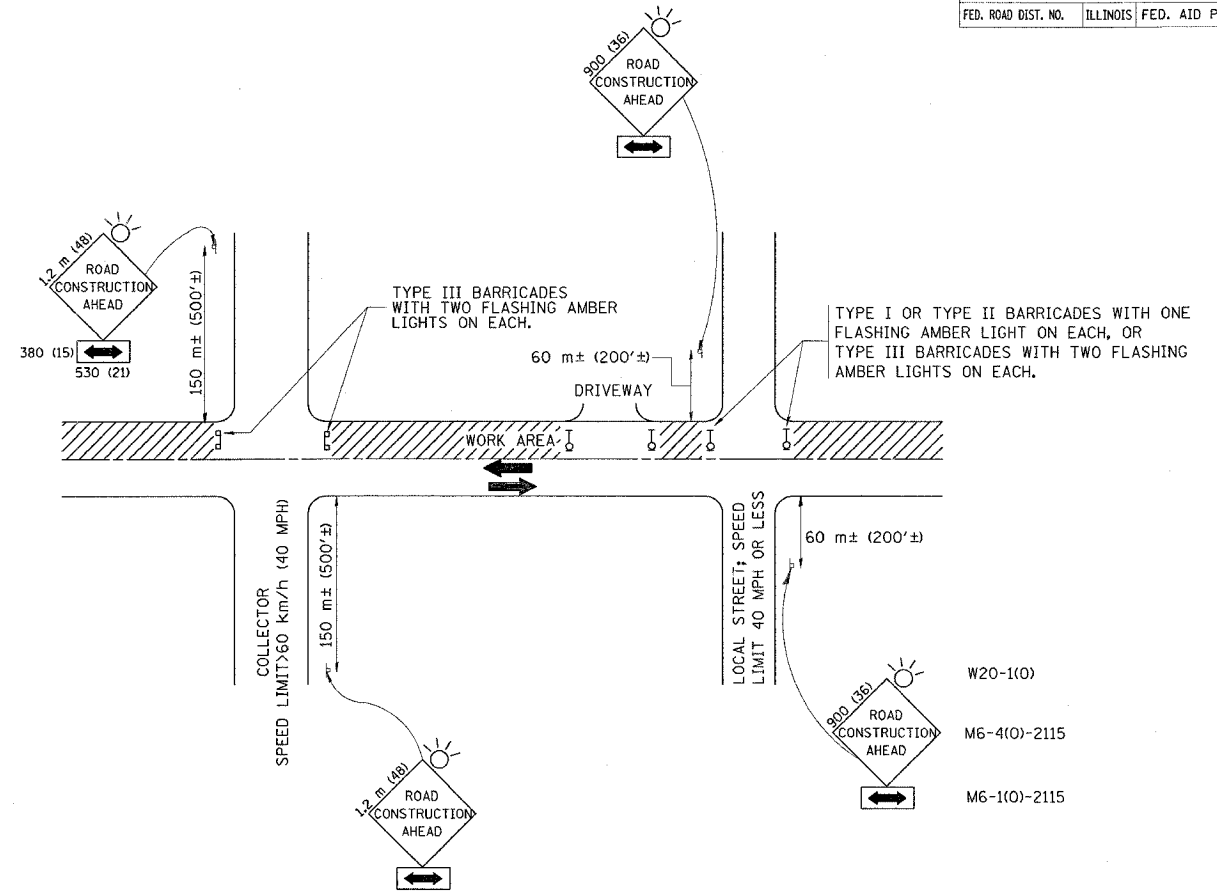
ILLINOIS DEPARTMENT OF TRANSPORTATION  
**PAVEMENT PATCHING FOR BITUMINOUS SURFACED PAVEMENT**

SCALE: VERT.  
 DATE: 4/19/2006

DRAWN BY  
 CHECKED BY  
 BD400-04 (BD-22)  
 REVISION DATE: 04/27/98

PLOT DATE = 4/19/2006  
 FILE NAME = N:\data\bd22.dgn  
 PLOT SCALE = 60.000 / IN.  
 USER NAME = trent

F.A. RTE.	SECTION	COUNTY	TOTAL SHEETS	SHEET NO.
55	2006-017 RS	DuPage+Will	17	13
STA.		TO STA.		
FED. ROAD DIST. NO.	ILLINOIS	FED. AID PROJECT		



TRAFFIC CONTROL AND PROTECTION FOR SIDE ROADS, INTERSECTIONS, AND DRIVEWAYS

NOTES:

- A. FOR NO LANE RESTRICTION ON THE SIDE ROAD OR DRIVEWAYS
- SIDE ROAD WITH A SPEED LIMIT OF 60 km/h (40 MPH) OR LESS AS SHOWN ON THE DRAWING AND AS DIRECTED BY THE ENGINEER:
    - ONE ROAD CONSTRUCTION AHEAD SIGN 900x900 (36x36) WITH A FLASHER AND FLAG MOUNTED ON IT APPROXIMATELY 60 m (200') IN ADVANCE OF THE MAIN ROUTE.
    - THE CLOSED PORTION OF THE MAIN ROUTE SHALL BE PROTECTED BY BLOCKING WITH TYPE I, TYPE II OR TYPE III BARRICADES, 1/3 OF THE CROSS SECTION OF THE CLOSED PORTION.
  - SIDE ROAD WITH A SPEED LIMIT GREATER THAN 60 km/h (40 MPH) AS SHOWN ON THE DRAWING AND AS DIRECTED BY THE ENGINEER:
    - ONE ROAD CONSTRUCTION AHEAD SIGN 1.2 m x 1.2 m (48x48) WITH A FLASHER MOUNTED ON IT APPROXIMATELY 150 m (500') IN ADVANCE OF THE MAIN ROUTE.
    - THE CLOSED PORTION OF THE MAIN ROUTE SHALL BE PROTECTED BY BLOCKING WITH TYPE III BARRICADES, 1/2 OF THE CROSS SECTION OF THE CLOSED PORTION.
3. WHEN THE SIDE ROAD LIES BETWEEN THE BEGINNING OF THE MAINLINE SIGNING AND THE WORK ZONE, A SINGLE HEADED ARROW (M6-1) SHALL BE USED IN LIEU OF THE DOUBLE HEADED ARROW (M6-4).
- B. FOR A LANE CLOSURE ON A SIDE ROAD OR DRIVEWAY:
- USE APPLICABLE PORTIONS OF THE TYPICAL APPLICATION OF TRAFFIC CONTROL DEVICES (STD. 701501, STD. 701606 OR THE APPROPRIATE STANDARD). THE SPACING OF SIGNS AND BARRICADES SHALL BE ADJUSTED FOR FIELD CONDITIONS AS DIRECTED BY THE ENGINEER. THE DIRECTIONAL ARROW SHALL BE COVERED OR REMOVED WHEN NO LONGER CONSISTENT WITH THE SIDE ROAD LANE CLOSURE.
- C. ADVANCE WARNING SIGNS ARE TO BE OMITTED ON DRIVEWAY UNLESS OTHERWISE NOTED.
- D. THE TRAFFIC CONTROL AND PROTECTION FOR SIDE ROADS, INTERSECTIONS, AND DRIVEWAYS SHALL BE INCIDENTAL TO THE COST OF SPECIFIED TRAFFIC CONTROL STANDARDS OR ITEMS.

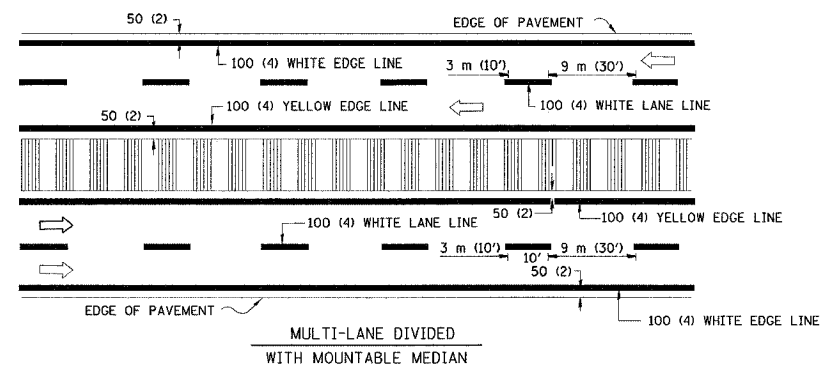
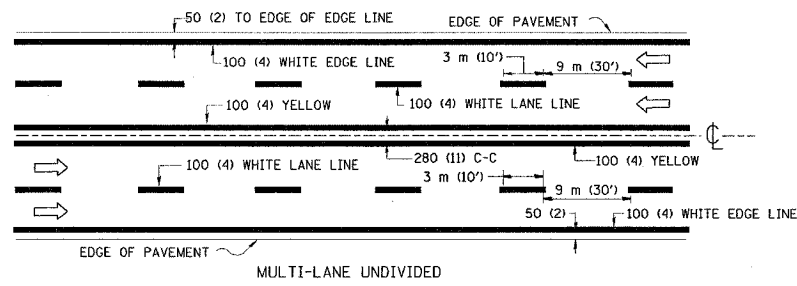
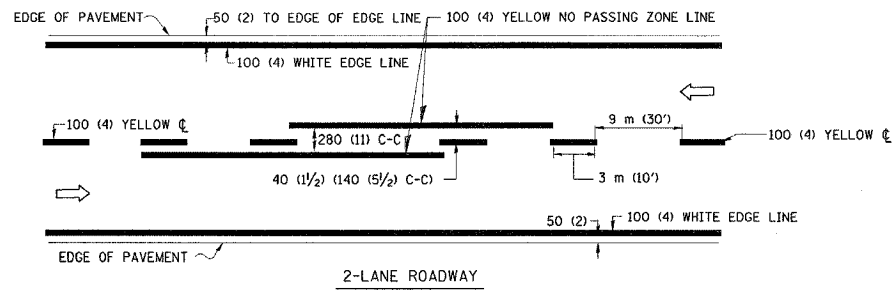
REVISIONS	
NAME	DATE
LHA	6/89
T. RAMMACHER	09/08/94
J. OBERLE	10/18/95
A. HOUSEH	03/06/96
A. HOUSEH	10/15/96
T. RAMMACHER	01/06/00

ILLINOIS DEPARTMENT OF TRANSPORTATION  
**TRAFFIC CONTROL AND PROTECTION  
 FOR  
 SIDE ROADS, INTERSECTIONS, AND  
 DRIVEWAYS**

SCALE: DATE: 4/19/2006 DRAWN BY: CHECKED BY: TC-10 REVISION DATE: 01/06/00

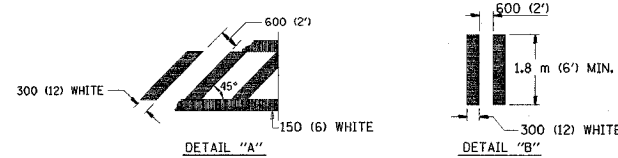
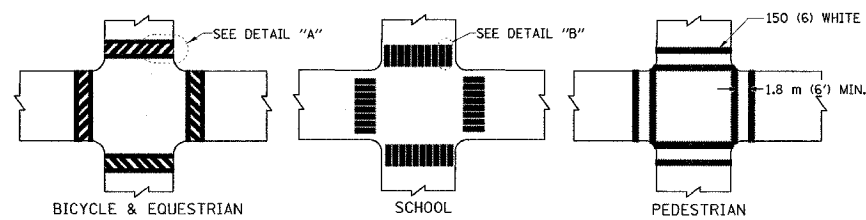
PLOT DATE = 4/19/2006  
 FILE NAME = n:\data\trc10.dgn  
 PLOT SCALE = 50.000 / IN.  
 USER NAME = trent

F.A.J. RTE.	SECTION	COUNTY	TOTAL SHEETS	SHEET NO.
55	2006-017 RS	DuPage+Will	17	14
STA.	TO STA.			
FED. ROAD DIST. NO.	ILLINOIS	FED. AID PROJECT		

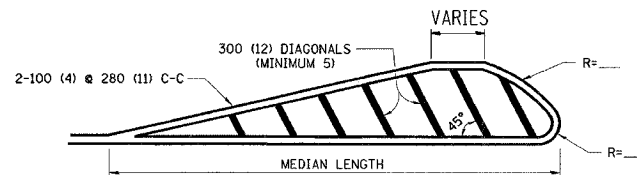
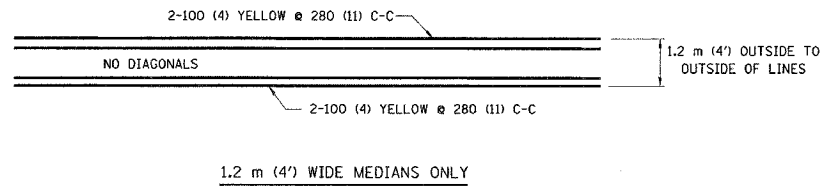


NOTE: MEDIANS WITH BARRIER CURB DO NOT REQUIRE AN EDGE LINE

TYPICAL LANE AND EDGE LINE MARKING



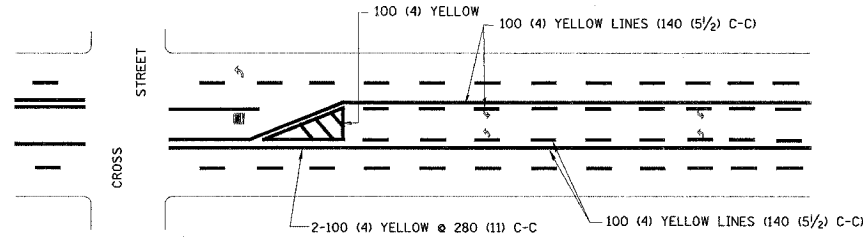
TYPICAL CROSSWALK MARKING



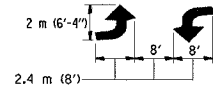
FOR MEDIAN LENGTHS WHERE DIAGONAL SPACING CANNOT BE ATTAINED, USE 5 (FIVE) EQUALLY SPACED DIAGONAL LINES.

DIAGONAL LINE SPACING: 15 m (50') C-C (LESS THAN 50 km/h (30 MPH))  
25 m (75') C-C (50 km/h (30 MPH) TO 70 km/h (45 MPH))  
45 m (150') C-C (MORE THAN 70 km/h (45 MPH))

MEDIANS OVER 1.2 m (4') WIDE

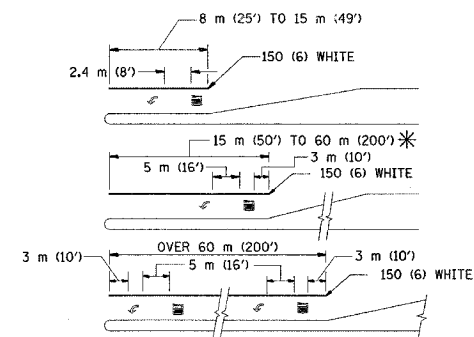


A MINIMUM OF TWO PAIRS OF TURN ARROWS SHALL BE USED, WHITE IN COLOR. ADDITIONAL PAIRS SHALL BE PLACED AT 60 m (200') TO 90 m (300') INTERVALS.



MEDIAN WITH TWO-WAY LEFT TURN LANE

TYPICAL PAINTED MEDIAN MARKING

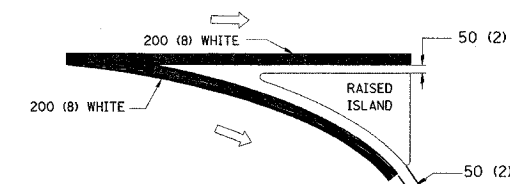
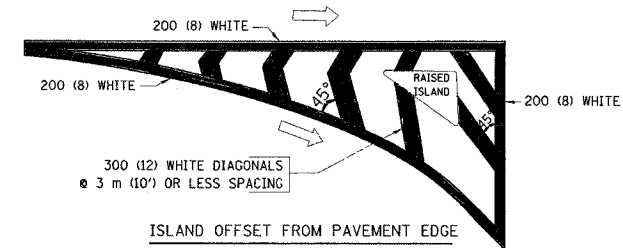


FULL SIZE LETTERS 2.4 m (8') AND ARROWS SHALL BE USED.  
AREA = 1.5 m<sup>2</sup> (15.6 SQ. FT.) AREA = 1.9 m<sup>2</sup> (20.8 SQ. FT.)

\* TURN LANES IN EXCESS OF 120 m (400') IN LENGTH MAY HAVE AN ADDITIONAL SET OF ARROW - "ONLY" INSTALLED MIDWAY BETWEEN THE OTHER TWO SETS OF ARROW - "ONLY".

TYPICAL LEFT (OR RIGHT) TURN LANE

TYPICAL TURN LANE MARKING



TYPICAL ISLAND MARKING

TYPE OF MARKING	WIDTH OF LINE	PATTERN	COLOR	SPACING / REMARKS
CENTERLINE ON 2 LANE PAVEMENT	100 (4)	SKIP-DASH	YELLOW	3 m (10') LINE WITH 9 m (30') SPACE
CENTERLINE ON MULTI-LANE UNDIVIDED PAVEMENT	2 @ 100 (4)	SOLID	YELLOW	280 (11) C-C
NO PASSING ZONE LINES: FOR ONE DIRECTION FOR BOTH DIRECTIONS	100 (4) 2 @ 100 (4)	SOLID SOLID	YELLOW YELLOW	140 (5 1/2) C-C FROM SKIP-DASH CENTERLINE 280 (11) C-C OMIT SKIP-DASH CENTERLINE BETWEEN
LANE LINES	100 (4) 125 (5) ON FREEWAYS	SKIP-DASH SKIP-DASH	WHITE WHITE	3 m (10') LINE WITH 9 m (30') SPACE
DOTTED LINES (EXTENSIONS OF CENTER, LANE OR TURN LANE MARKINGS)	SAME AS LINE BEING EXTENDED	SKIP-DASH	SAME AS LINE BEING EXTENDED	600 (2') LINE WITH 1.8 m (6') SPACE
EDGE LINES	100 (4)	SOLID	YELLOW-LEFT WHITE-RIGHT	OUTLINE MOUNTABLE MEDIANS IN YELLOW; EDGE LINES ARE NOT USED NEXT TO BARRIER CURB
TURN LANE MARKINGS	150 (6) LINE; FULL SIZE LETTERS & SYMBOLS (2.4 m (8'))	SOLID	WHITE	SEE TYPICAL TURN LANE MARKING DETAIL
TWO WAY LEFT TURN MARKING	2 @ 100 (4) EACH DIRECTION 2.4 m (8') LEFT ARROW	SKIP-DASH AND SOLID IN PAIRS	YELLOW WHITE	3 m (10') LINE WITH 9 m (30') SPACE FOR SKIP-DASH; 140 (5 1/2) C-C BETWEEN SOLID LINE AND SKIP-DASH LINE SEE TYPICAL TWO-WAY LEFT TURN MARKING DETAIL
CROSSWALK LINES (PEDESTRIAN) A. DIAGONALS (BIKE & EQUESTRIAN) B. LONGITUDINAL BARS (SCHOOL)	2 @ 150 (6) 300 (12) @ 45° 300 (12) @ 90°	SOLID SOLID SOLID	WHITE WHITE WHITE	NOT LESS THAN 1.8 m (6') APART 600 (2') APART 600 (2') APART SEE TYPICAL CROSSWALK MARKING DETAILS.
STOP LINES	600 (24)	SOLID	WHITE	PLACE 1.2 m (4') IN ADVANCE OF AND PARALLEL TO CROSSWALK, IF PRESENT. OTHERWISE, PLACE AT DESIRED STOPPING POINT, PARALLEL TO CROSSROAD CENTERLINE, WHERE POSSIBLE
PAINTED MEDIANS	2 @ 100 (4) WITH 300 (12) DIAGONALS @ 45° NO DIAGONALS USED FOR 1.2 m (4') WIDE MEDIANS	SOLID	YELLOW; TWO WAY TRAFFIC WHITE; ONE WAY TRAFFIC	280 (11) C-C FOR THE DOUBLE LINE SEE TYPICAL PAINTED MEDIAN MARKING.
GORE MARKING AND CHANNELIZING LINES	200 (8) WITH 300 (12) DIAGONALS @ 45°	SOLID	WHITE	DIAGONALS: 4.5 m (15') C-C (LESS THAN 50 km/h (30 MPH)) 6 m (20') C-C (50 km/h (30 MPH) TO 70 km/h (45 MPH)) 9 m (30') C-C (OVER 70 km/h (45 MPH))
RAILROAD CROSSING	600 (24) TRANSVERSE LINES; "RR" IS 1.8 m (6') LETTERS; 400 (16) LINE FOR "X"	SOLID	WHITE	SEE STATE STANDARD 780001 AREA OF: "R"=0.33m <sup>2</sup> (3.6 SQ. FT.) EACH "X"=5.0 m <sup>2</sup> (54.0 SQ. FT.)
SHOULDER DIAGONALS	300 (12) @ 45°	SOLID	WHITE - RIGHT YELLOW - LEFT	15 m (50') C-C (LESS THAN 50 km/h (30 MPH)) 25 m (75') C-C (50 km/h (30 MPH) TO 70 km/h (45 MPH)) 45 m (150') C-C (OVER 70 km/h (45 MPH))

FOR FURTHER DETAILS ON PAVEMENT MARKING REFER TO STANDARD SPECIFICATIONS FOR ROAD AND BRIDGE CONSTRUCTION AND STATE STANDARD 780001.

All dimensions are in millimeters (inches) unless otherwise shown.

REVISIONS	
NAME	DATE
EVERS	03-19-90
T. RAMMACHER	10-27-94
ALEX HOUSEH	10-09-96
ALEX HOUSEH	10-17-96
T. RAMMACHER	01-06-00

ILLINOIS DEPARTMENT OF TRANSPORTATION

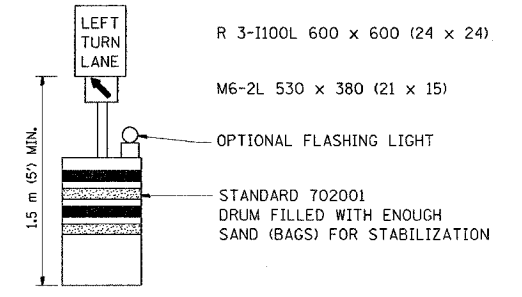
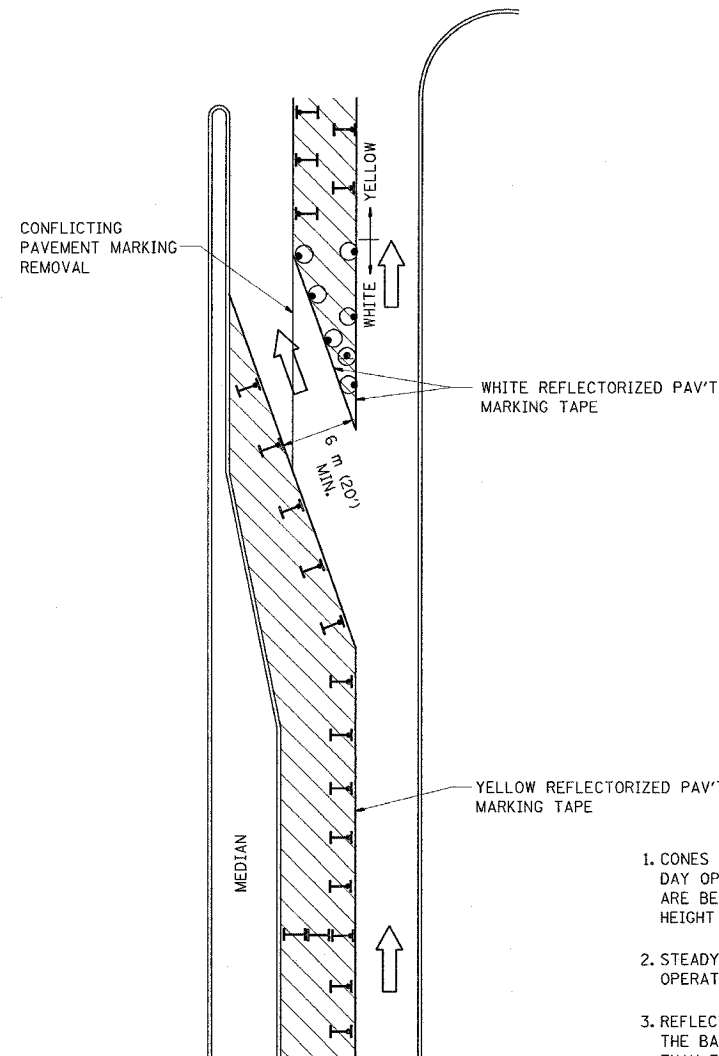
DISTRICT ONE  
TYPICAL PAVEMENT  
MARKINGS

SCALE: NONE  
DATE: 4/19/2006

DRAWN BY CADD  
CHECKED BY

TC-13  
REVISION DATE: 01/06/00

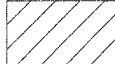
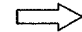



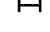
F.A.I. RTE.	SECTION	COUNTY	TOTAL SHEETS	SHEET NO.
55	2006-047 RS Dr/AGE + W/IL		17	15
STA.	TO STA.			
FED. ROAD DIST. NO.	ILLINOIS	FED. AID PROJECT		



**GENERAL NOTES**

1. CONES MAY BE SUBSTITUTED FOR BARRICADES OR DRUMS AT HALF THE SPACING DURING DAY OPERATIONS. CONES SHALL BE A MINIMUM OF 710 (28) IN HEIGHT. WHEN CONES ARE BEING USED, THE "LEFT TURN LANE" SIGN MAY BE SKID MOUNTED AT A MINIMUM HEIGHT OF 1.5 m (5').
2. STEADY BURNING LIGHTS WILL NOT BE REQUIRED ON BARRICADES OR DRUMS FOR DAY OPERATIONS. ALL LIGHTS SHALL BE MONODIRECTIONAL.
3. REFLECTORIZED TEMPORARY PAVEMENT MARKING TAPE SHALL BE PLACED THROUGHOUT THE BARRICADED AREA OF EACH TURN BAY WHERE THE CLOSURE TIME IS GREATER THAN FOURTEEN DAYS.
4. THIS APPLICATION ALSO APPLIES WHEN WORK IS BEING PERFORMED IN THE RIGHT LANE(S) AND THE RIGHT TURN BAY IS TO REMAIN OPEN. UNDER THIS CONDITION, "RIGHT TURN LANE" R3-100 600 x 600 (24 x 24) AND M6-2R 530 x 380 (21 x 15) SHALL BE USED.
5. THESE CONTROLS SHALL SUPPLEMENT MAINLINE TRAFFIC CONTROL FOR LANE CLOSURES.
6. LONGITUDINAL DIMENSIONS MAY BE ADJUSTED TO FIT FIELD CONDITIONS.
7. FORM BT 725 IS REQUIRED.
8. TRAFFIC CONTROL AND PROTECTION AT TURN BAYS (TO REMAIN OPEN TO TRAFFIC) SHALL BE INCLUDED IN THE COST SPECIFIED TRAFFIC CONTROL STANDARDS OR ITEMS.

**LEGEND**

-  WORK AREA
-  LANE OPEN TO TRAFFIC
-  TYPE I OR II BARRICADE WITH STEADY BURN LIGHT
-  DRUM WITH STEADY BURN LIGHT
-  DRUM WITH SIGN (WITH OPTIONAL FLASHING LIGHT) SEE DETAIL
-  TYPE I OR II CHECK BARRICADE WITH FLASHING LIGHT

All dimensions are in millimeters (inches) unless otherwise shown.

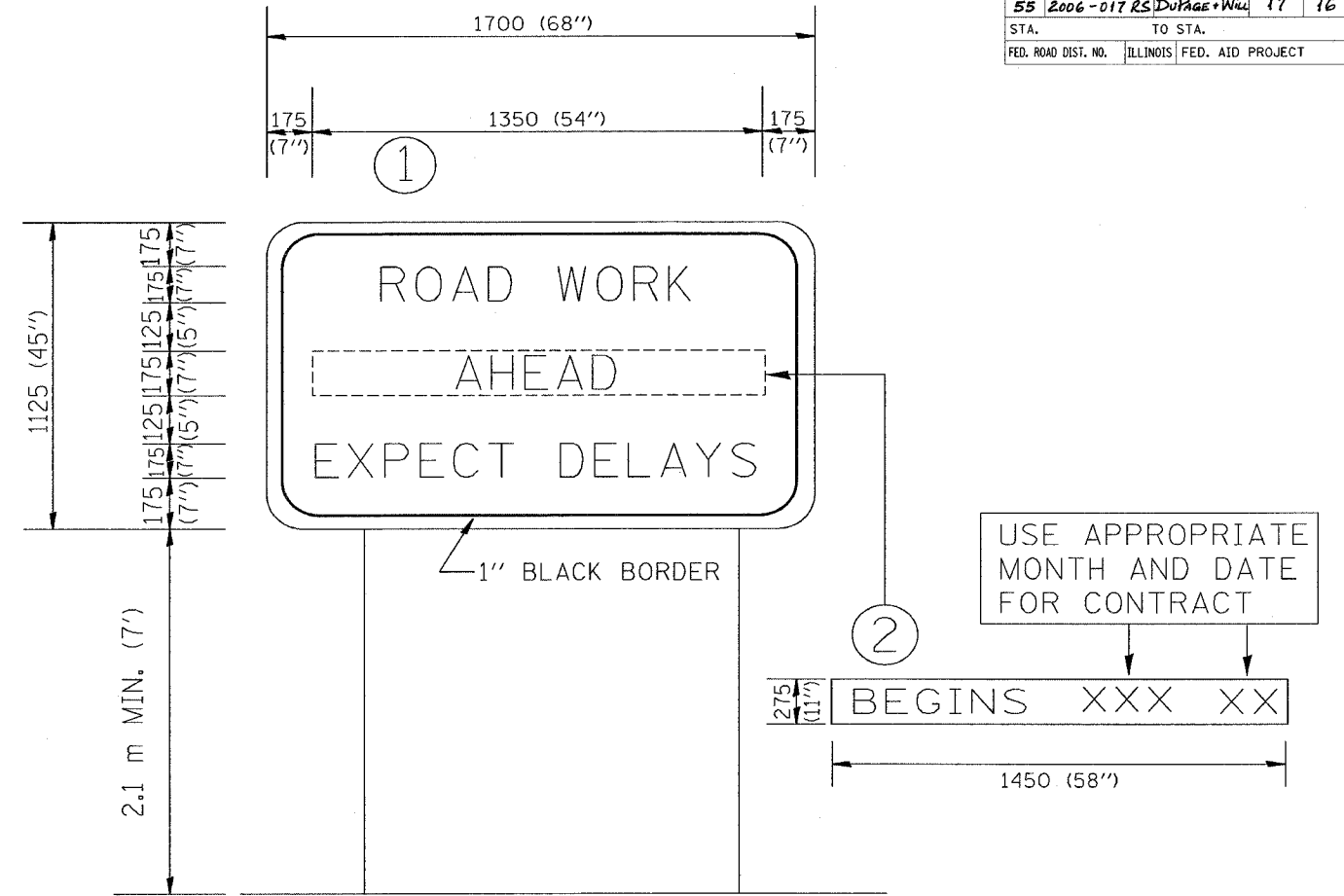
REVISIONS	
NAME	DATE
T. RAMMACHER	09/08/94
A. HOUSEH	11/07/95
A. HOUSEH	10/12/96
T. RAMMACHER	01/06/00

ILLINOIS DEPARTMENT OF TRANSPORTATION  
**TRAFFIC CONTROL AND PROTECTION  
 AT TURN BAYS  
 (TO REMAIN OPEN TO TRAFFIC)**

SCALE: NONE  
 DATE: 4/19/2006  
 DRAWN BY: [blank]  
 CHECKED BY: LHA  
 TC-14  
 REVISION DATE: 01/06/00

PLOT DATE = 4/19/2006  
 FILE NAME = N:\Users\trant\104.dgn  
 PLOT SCALE = 49.9999 / IN.  
 USER NAME = trant

F.A.I. RTE.	SECTION	COUNTY	TOTAL SHEETS	SHEET NO.
55	2006-017 RS	DuPage+Will	17	16
STA.		TO STA.		
FED. ROAD DIST. NO.	ILLINOIS	FED. AID PROJECT		



NOTES:

1. USE BLACK LETTERING ON ORANGE BACKGROUND.
2. ERECT SIGNS IN ADVANCE OF THE LOCATION FOR THE "ROAD CONSTRUCTION AHEAD" SIGN AT LOCATIONS AS DIRECTED BY THE ENGINEER.
3. ERECT SIGN ① WITH INSTALLED PANEL ② ONE WEEK PRIOR TO THE START OF CONSTRUCTION.
4. REMOVE PANEL ② SOON AFTER THE START OF CONSTRUCTION.
5. SEE SPECIAL PROVISION FOR "TEMPORARY INFORMATION SIGNING" FOR ADDITIONAL INFORMATION.
6. ONE SIGN ASSEMBLY EQUALS 2.3 SQ. M. (25.70 SQ. FT.)

ALL DIMENSIONS ARE IN MILLIMETERS (INCHES) UNLESS OTHERWISE SHOWN.

REVISIONS	
NAME	DATE
R. MIRS	9-15-97
R. MIRS	12-11-97
T. RAMMACHER	2-2-99

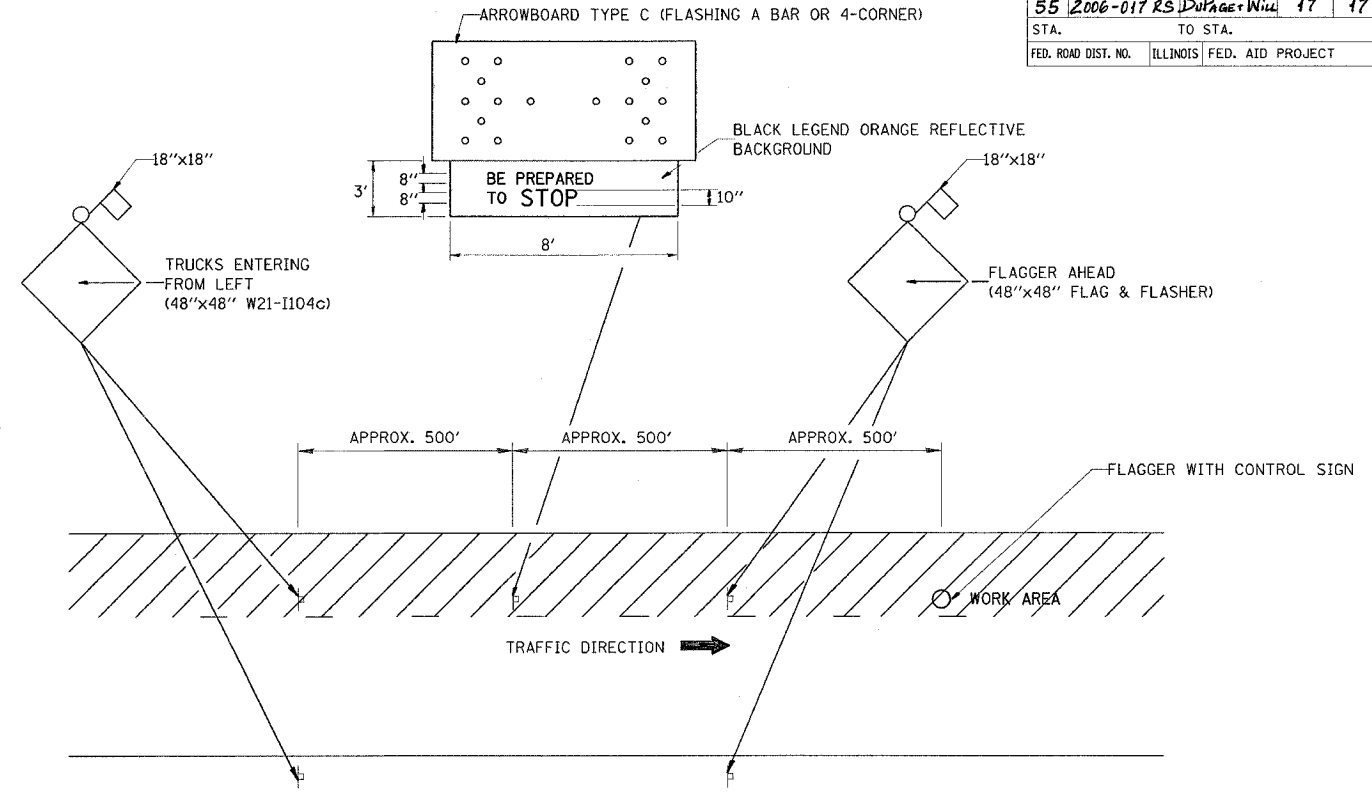
ILLINOIS DEPARTMENT OF TRANSPORTATION  
 TEMPORARY INFORMATION SIGNING

SCALE:  
 DATE: 4/19/2006

DRAWN BY DESIGN  
 CHECKED BY  
 TC22  
 REVISION DATE: 02/02/99



F.A.I. RTE.	SECTION	COUNTY	TOTAL SHEETS	SHEET NO.
55	2006-017 RS	DuPage + Will	17	17
STA.	TO STA.			
FED. ROAD DIST. NO.	ILLINOIS	FED. AID PROJECT		



**METHOD OF FLAGGING**

**NOTE:**

1. SIGNS SHALL BE MOUNTED AT A MINIMUM CLEARANCE HEIGHT OF 5 FEET
2. ALL SIGNS SHALL BE REMOVED WHEN THE FLAGGING OPERATION CEASES.
3. THIS CASE ALSO APPLIES WHEN THE WORK ZONE IS ON THE RIGHT. UNDER THESE CONDITIONS "TRUCKS ENTERING FROM RIGHT" SIGNS SHALL BE SUBSTITUTED FOR "TRUCKS ENTERING FROM LEFT" SIGNS. ALSO THE ARROWBOARD AND "BE PREPARED TO STOP" SIGNS SHALL BE RELOCATED TO THE RIGHT SIDE OF THE ROAD.
4. WORK ZONE ACCESS POINTS SHOULD BE A MINIMUM OF ONE HALF MILE APART. MEDIAN WORK ZONE ACCESS POINTS SHOULD NOT BE LOCATED OPPOSITE OF EACH OTHER.
5. NIGHTTIME FLAGGING OPERATIONS: THE FLAG STATION SHALL BE LIGHTED WITH ADDITIONAL LIGHTS OTHER THAN STREET LIGHTS. THE FLAGGER CONTROL SIGN AND THE FLAGGER'S VEST SHALL BE REFLECTORIZED. IN ADDITION, THE FLAGGER SHALL HAVE A FLASHLIGHT OR LIGHTED WAND.

REVISIONS	
NAME	DATE
RAY RITCHIE	5/10/00

ILLINOIS DEPARTMENT OF TRANSPORTATION

**METHOD OF FLAGGING**

SCALE: NOT TO SCALE  
DATE: 4/19/2006

DRAWN BY C.A.D.  
CHECKED BY  
BM-14

REVISION DATE: 05/10/00

PLOT DATE = 4/19/2006  
FILE NAME = m:\databases\plan\m4.dgn  
PLOT SCALE = 48x48x2335 1/1 IN  
USER NAME = ritchie