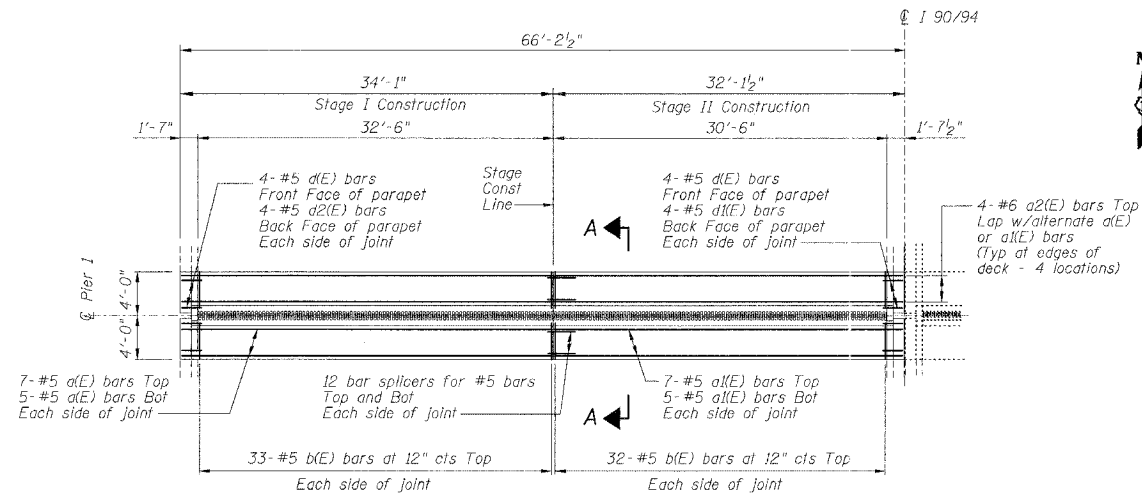


STATE OF ILLINOIS  
DEPARTMENT OF TRANSPORTATION

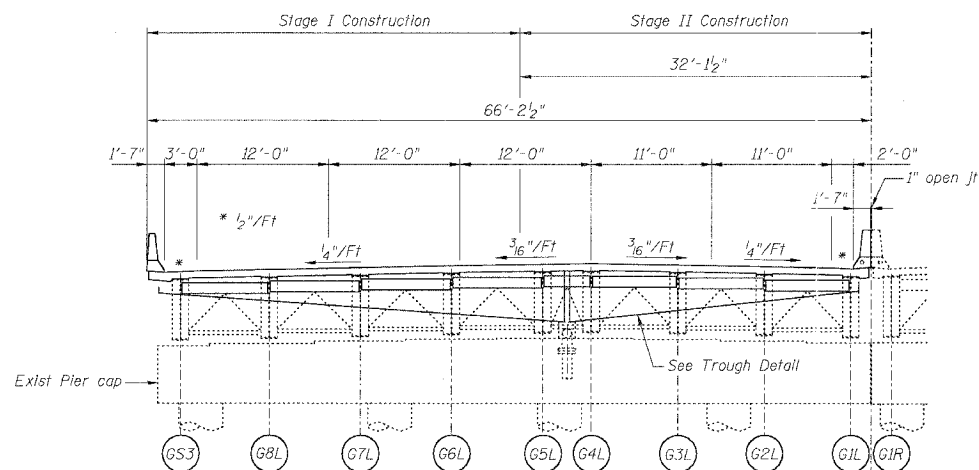
ROUTE NO.	SECTION	COUNTY	TOTAL SHEETS	SHEET NO.
FA1 90/94	*	COOK	344	222
FEDERAL DIST. NO.	ILLINOIS	PROJECT		

Sheet No 3  
of 8 Sheets

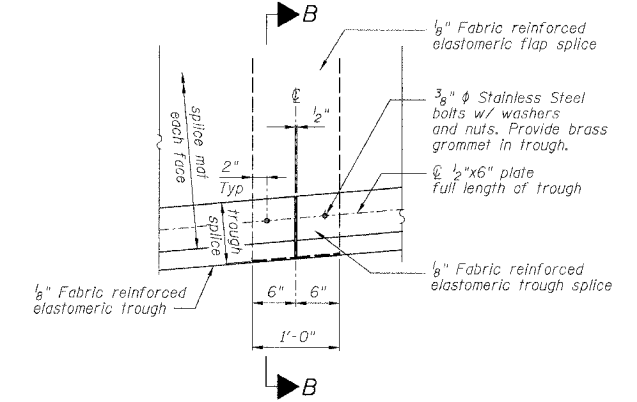
2003-029 I  
CONTRACT #62581



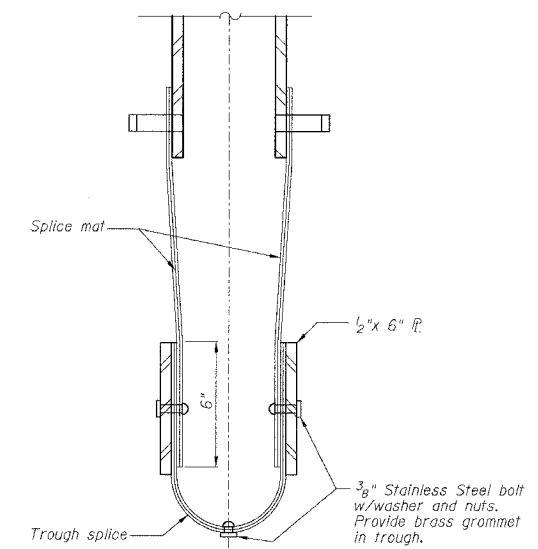
FINGER PLATE AT PIER 1 SOUTHBOUND  
JOINT RECONSTRUCTION PLAN AT PIER 1



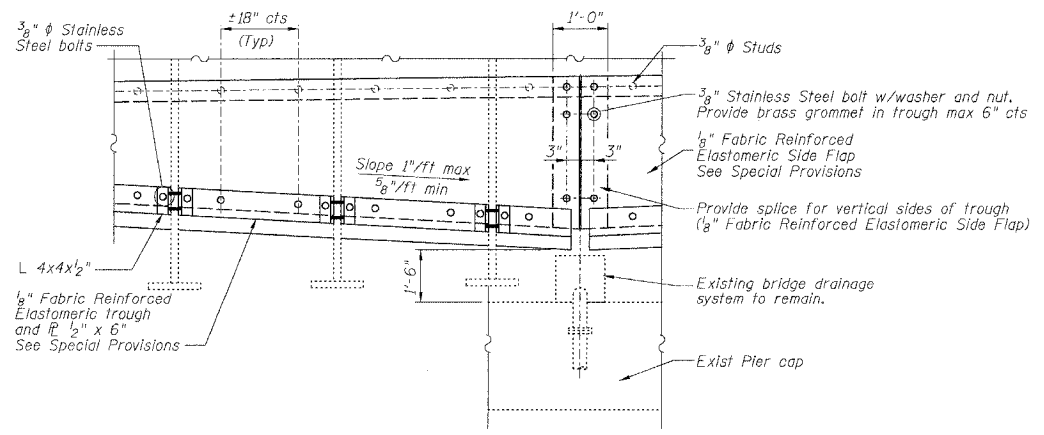
PIER 1 SOUTHBOUND  
ELEVATION AT PIER 1 (LOOKING NORTH)



TROUGH SPLICE DETAIL



SECTION B-B



TROUGH DETAIL

NOTES

For Section A-A see Sheet 4 of 8.

PIER NO. 1  
FINGER PLATE EXPANSION JOINT DETAILS

REVISIONS	STATE OF ILLINOIS DEPARTMENT OF TRANSPORTATION DIVISION OF HIGHWAYS	DRAWN BY DATE RLK 5/03
1		CHECKED BY DATE SDS 5/03
2		BOOK NUMBER
3	FA1 RTE 90/94 SB DAN RYAN EXPRESSWAY	PROJECT No.
4	SN 016-1110 (SOUTHBOUND)	4222-3
5	SEC 2003-029 I COOK COUNTY	SHEET No.
6		
7		
8		
9		
10		

HOMER L. CHASTAIN & ASSOCIATES CONSULTING ENGINEERS  
4800 W. BEYER MAWR AVENUE SUITE 304 CHICAGO, ILLINOIS 60631 312-714-4090 FAX 312-714-0088