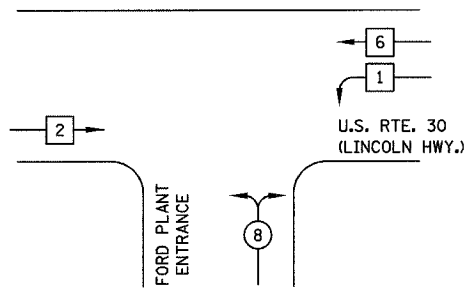
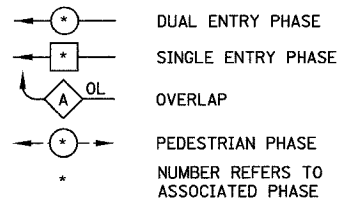


CONTROLLER SEQUENCE

LEGEND



PHASE DESIGNATION DIAGRAM

SCHEDULE OF QUANTITIES

QUANTITY	UNIT	PAY ITEM
0.25	L SUM	TRAFFIC CONTROL AND PROTECTION, STANDARD 701426
0.25	L SUM	TRAFFIC CONTROL AND PROTECTION, STANDARD 701601
0.25	L SUM	TRAFFIC CONTROL AND PROTECTION, STANDARD 701701
0.25	L SUM	TRAFFIC CONTROL AND PROTECTION, STANDARD 701801
10	SQ FT	SIGN PANEL - TYPE 1
73	SQ FT	THERMOPLASTIC PAVEMENT MARKING - LETTERS AND SYMBOLS
130	FOOT	THERMOPLASTIC PAVEMENT MARKING - LINE 4"
62	FOOT	THERMOPLASTIC PAVEMENT MARKING - LINE 6"
56	FOOT	THERMOPLASTIC PAVEMENT MARKING - LINE 24"
66	SQ FT	THERMOPLASTIC PAVEMENT MARKING REMOVAL
575	FOOT	CONDUIT IN TRENCH, 2" DIA., GALVANIZED STEEL
148	FOOT	CONDUIT IN TRENCH, 2 1/2" DIA., GALVANIZED STEEL
36	FOOT	CONDUIT IN TRENCH, 4" DIA., GALVANIZED STEEL
110	FOOT	CONDUIT PUSHED, 2" DIA., GALVANIZED STEEL
133	FOOT	CONDUIT PUSHED, 4" DIA., GALVANIZED STEEL
4	EACH	HANDHOLE
2	EACH	HEAVY-DUTY HANDHOLE
1	EACH	DOUBLE HANDHOLE
754	FOOT	TRENCH AND BACKFILL FOR ELECTRICAL WORK
1	EACH	FULL-ACTUATED CONTROLLER AND TYPE IV CABINET
1	EACH	TRANSCEIVER - FIBER OPTIC
2092	FOOT	ELECTRIC CABLE IN CONDUIT, SIGNAL NO. 14 5C
1630	FOOT	ELECTRIC CABLE IN CONDUIT, LEAD-IN, NO. 14 1 PAIR
129	FOOT	ELECTRIC CABLE IN CONDUIT, SERVICE, NO. 6 2C
465	FOOT	ELECTRIC CABLE IN CONDUIT, GROUNDING, NO. 6 1C
2	EACH	TRAFFIC SIGNAL POST, GALVANIZED STEEL, 14 FT.
1	EACH	STEEL MAST ARM ASSEMBLY AND POLE, 24 FT.
2	EACH	STEEL MAST ARM ASSEMBLY AND POLE, 36 FT.
8	FOOT	CONCRETE FOUNDATION, TYPE A
4	FOOT	CONCRETE FOUNDATION, TYPE D
45	FOOT	CONCRETE FOUNDATION, TYPE E 30-INCH DIAMETER
7	EACH	TRAFFIC SIGNAL BACKPLATE, LOUVERED, ALUMINUM
7	EACH	INDUCTIVE LOOP DETECTOR
364	FOOT	DETECTOR LOOP, TYPE I
1	EACH	TEMPORARY TRAFFIC SIGNAL INSTALLATION
1	EACH	REMOVE EXISTING TRAFFIC SIGNAL EQUIPMENT
7	EACH	REMOVE EXISTING HANDHOLE
9	EACH	REMOVE EXISTING CONCRETE FOUNDATION
7	EACH	SIGNAL HEAD, L.E.D., 1-FACE, 3-SECTION, MAST ARM MOUNTED
2	EACH	SIGNAL HEAD, L.E.D., 1-FACE, 3-SECTION, BRACKET MOUNTED
2	EACH	SIGNAL HEAD, L.E.D., 2-FACE, 3-SECTION, BRACKET MOUNTED
1	EACH	SERVICE INSTALLATION, POLE MOUNT

REVISIONS	
NAME	DATE

ILLINOIS DEPARTMENT OF TRANSPORTATION
 TRAFFIC SIGNAL SEQUENCE
 OF OPERATION & SCHEDULE
 OF QUANTITIES
 U.S. RTE. 30 (LINCOLN HWY.) &
 FORD PLANT ENTRANCE
 SCALE: NONE
 DATE: 3/10/06
 DRAWN BY: BRD
 DESIGNED BY: BRD
 CHECKED BY: JJE/KMM