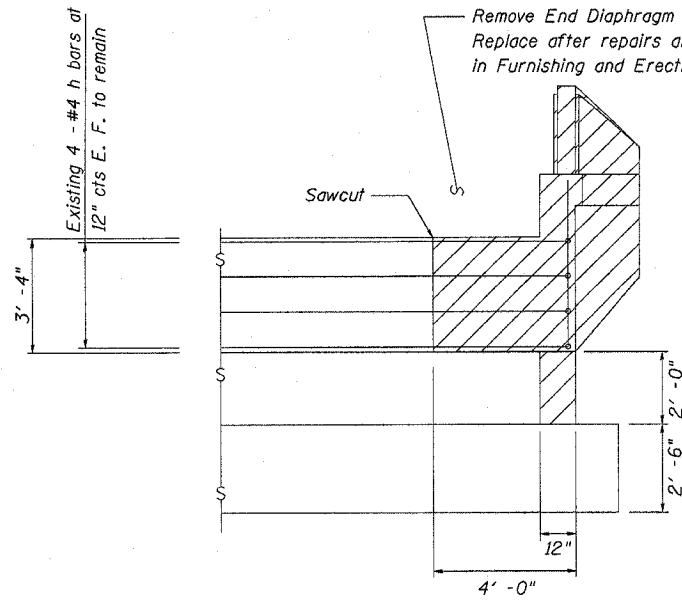
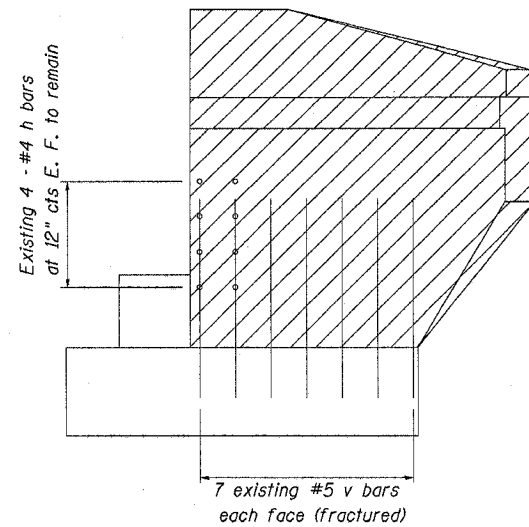


F.A.I. RTE.	SECTION	COUNTY	TOTAL SHEETS	SHEET NO.
80	2	Henry	13	8
STA.	TO STA.			
FED. ROAD DIST. NO. ILLINOIS FED. AID PROJECT				

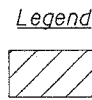
FAI 80 & 74  
 (37-5HB-2 & 81-1HB)M  
 Henry & Rock Island Counties  
 Sheet 3 of 7



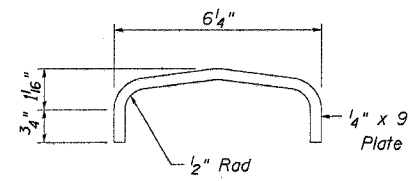
Southwest Wingwall - Looking South  
 (Showing Concrete Removal)



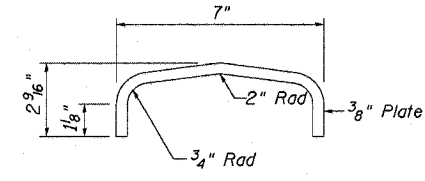
Elevation - Southwest Wingwall  
 (Showing Concrete Removal)



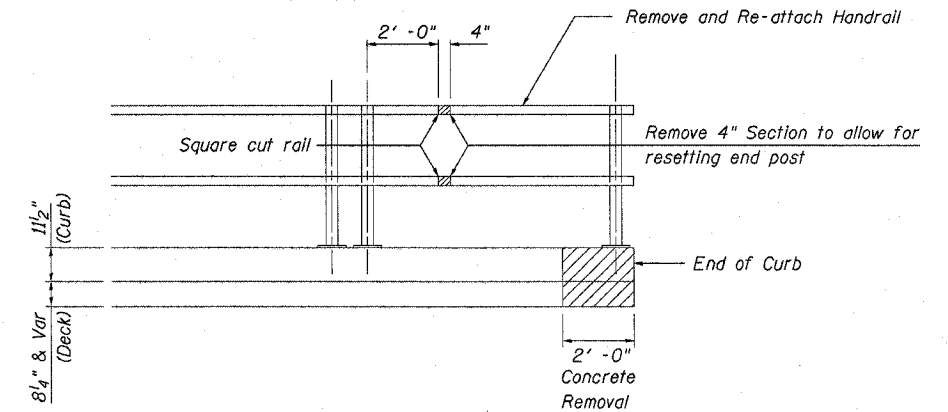
Concrete Removal



Proposed Splice Plate Detail  
 (8 Required)



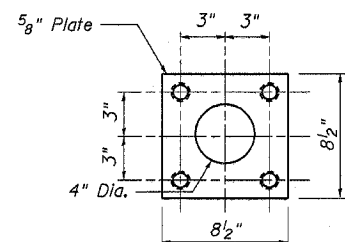
Existing Rail Detail



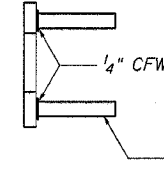
End of Rail Elevation

Notes:

Backfill the void around the reconstructed wingwall with fine aggregate as defined in article 1003.04 of the standard specifications. This material shall be capped with 4 inches of soil capable of supporting vegetation.



Plan



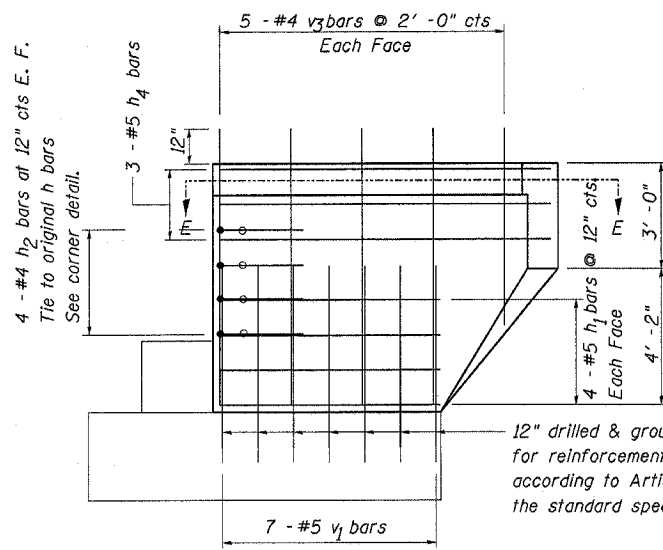
Side View

1/4" Double Extra Strong Pipe.  
 Ream & Tap for 1" x 3 1/2" long  
 Hex Bolt. Thread bolt 3".

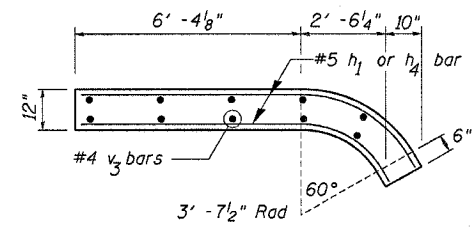
Bill of Material (Substructure)

BAR	NO.	SIZE	LENGTH	SHAPE
e(e)	4	4	4'-6"	
e1(e)	6	4	5'-0"	
e2(e)	2	4	3'-4"	
e3(e)	2	4	5'-0"	
e4(e)	2	4	2'-3"	
h1(e)	8	5	7'-0"	
h2(e)	8	4	3'-0"	
h4(e)	6	5	9'-6"	
v1(e)	14	5	5'-0"	
v3(e)	10	4	4'-9"	

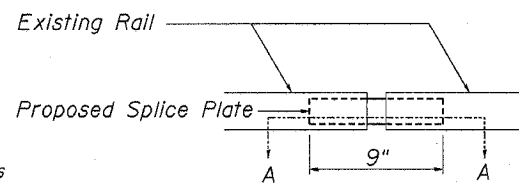
ITEM	UNIT	QUANTITY
Concrete Removal	Cu Yd	2.7
Concrete Structures	Cu Yd	2.7
Structure Excavation	Cu Yd	20
Porous Granular Embankment	Cu Yd	20



Elevation - Proposed Southwest Wingwall

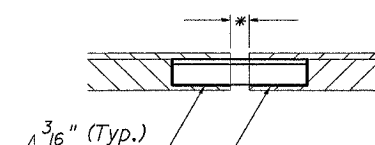


Section E-E

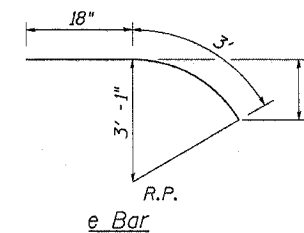


Elevation - Proposed Rail Splice

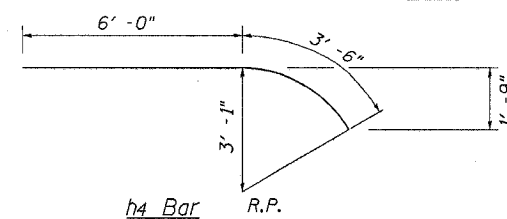
\* Dimension varies as needed to re-install end post



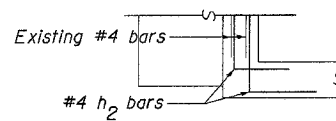
Section A-A



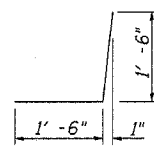
e Bar



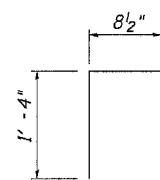
h4 Bar



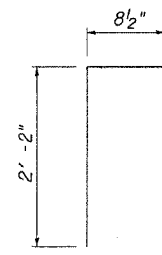
Corner Detail  
 Plan View



h2 Bar



e2 Bar



e3 Bar

Abutment Details  
 FAI Route 80 Section (37-5HB-2)M  
 Henry County  
 Structure No. 037-0116  
 TR 375N over Interstate 80