

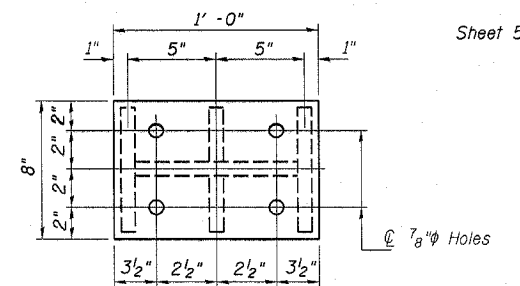
F.A.I. RTE.	SECTION	COUNTY	TOTAL SHEETS	SHEET NO.
*	**	***	13	10
STA.		TO STA.		
FED. ROAD DIST. NO.		ILLINOIS FED. AID PROJECT		

* FAI 80 & 74
 ** (37-5HB-2 & 81-1HB)M
 *** Henry & Rock Island Counties

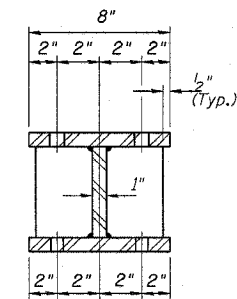
BEAM REACTIONS

R _L	(K)	16.1
R _R	(K)	30.1
Imp.	(K)	8.7
R (Total)	(K)	54.4

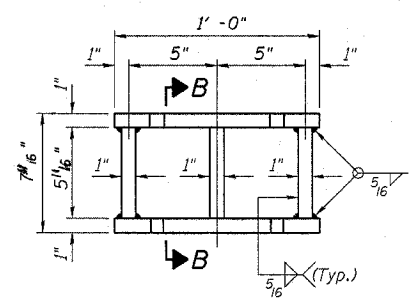
Notes:
 Diaphragm removal and reinstallation may be required to facilitate drilling holes. Cost included with Furnishing and Erecting Structural Steel.
 New steel extensions, side retainers, shim plates, connection bolts, and anchor bolts are included with Furnishing and Erecting Structural Steel.
 See Sheet 7 of 7 for Anchor Bolt installation.
 Prior to ordering any material, the Contractor shall verify in the field all bearing height and shim thickness dimensions.
 Min. jack capacity = 25 Tons.



PLAN TOP AND BOTTOM PLATE



SECTION B-B



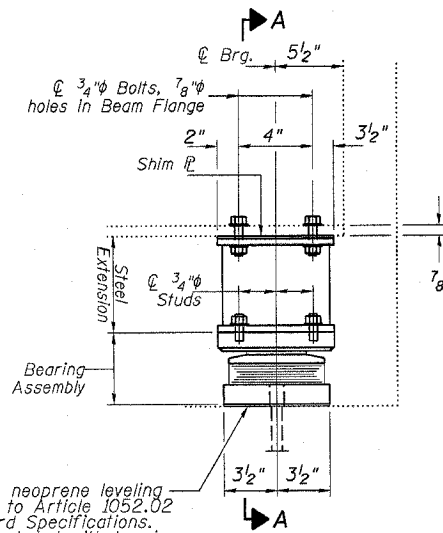
STEEL EXTENSION DETAIL

For existing bearing removal detail, see sheet 4 of 7

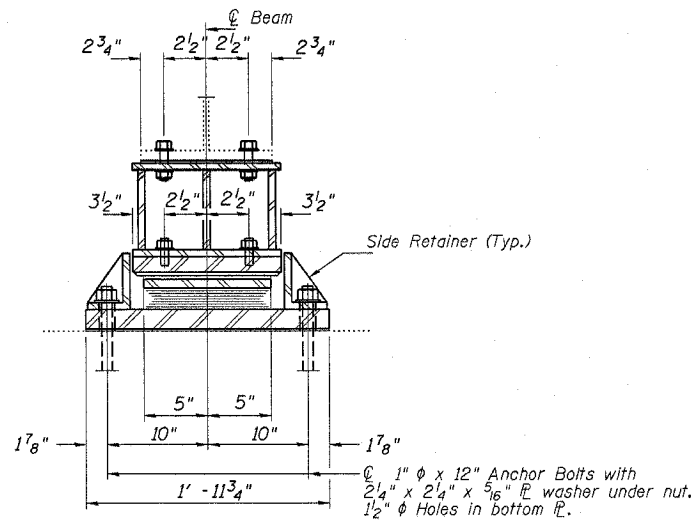
BILL OF MATERIAL

Item	Unit	Total
Elastomeric Bearing Assembly Type II	Each	5
Jack and Remove Existing Bearings	Each	5
Furnishing and Erecting Structural Steel	Pound	735

South Abutment
 Elastomeric Bearings
 FAI Route 80 Section (37-5HB-2)M
 Henry County
 Structure No. 037-0116
 TR 375N over Interstate 80

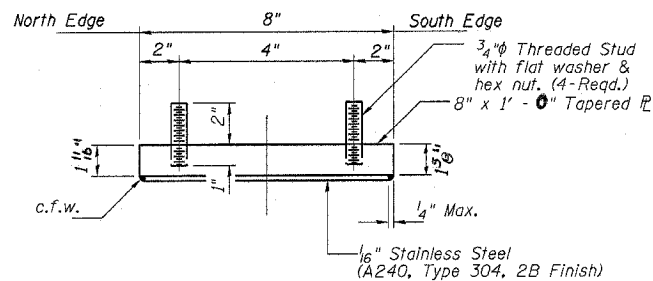


ELEVATION AT SOUTH ABUTMENT

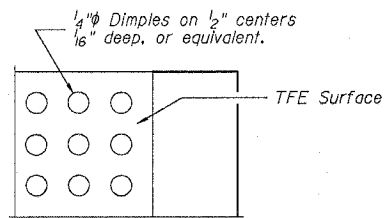


SECTION A-A

TYPE II TFE ELASTOMERIC EXP. BRG.



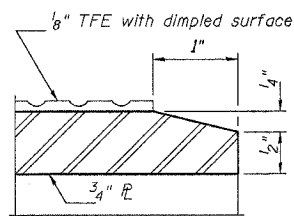
TOP BEARING ASSEMBLY



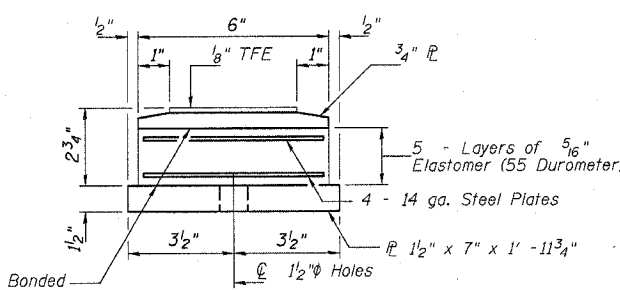
PLAN-TFE SURFACE

Note: The 1/8" TFE sheet shall be bonded directly to the top steel plate with a two-component, medium viscosity epoxy resin, conforming to the requirements of the Federal Specification MMM-A-134, Type 1. The bond agent shall be applied on the full area of the contact surfaces.

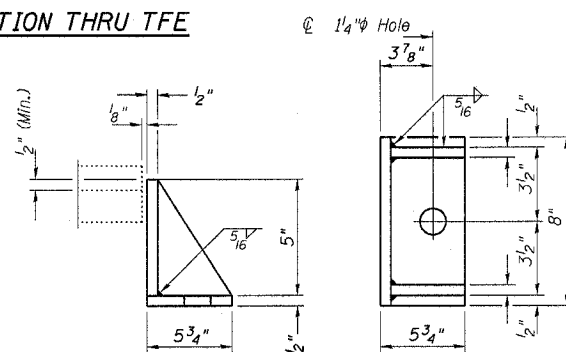
Bonding of 1/8" TFE sheet during vulcanizing process will be permitted provided the process and method of adjusting assembly height is approved by the Engineer.



SECTION THRU TFE

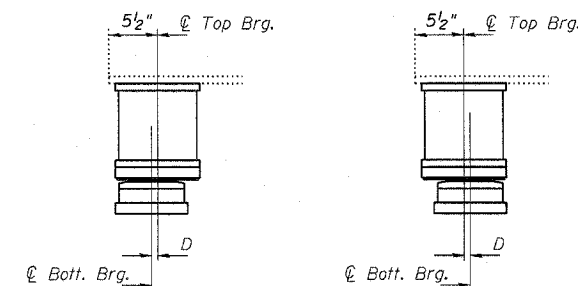


BOTTOM BEARING ASSEMBLY



SIDE RETAINER

Equivalent rolled angle with stiffeners will be allowed in lieu of welded plates.



BELOW 50° F. (Move bott. brg. away from fixed brg.)
 ABOVE 50° F. (Move bott. brg. toward fixed brg.)

SETTING ANCHOR BOLTS AT EXP. BRG.

D = 1/8" per each 100' of expansion for every 15° temp. change from the normal temp. of 50°F.