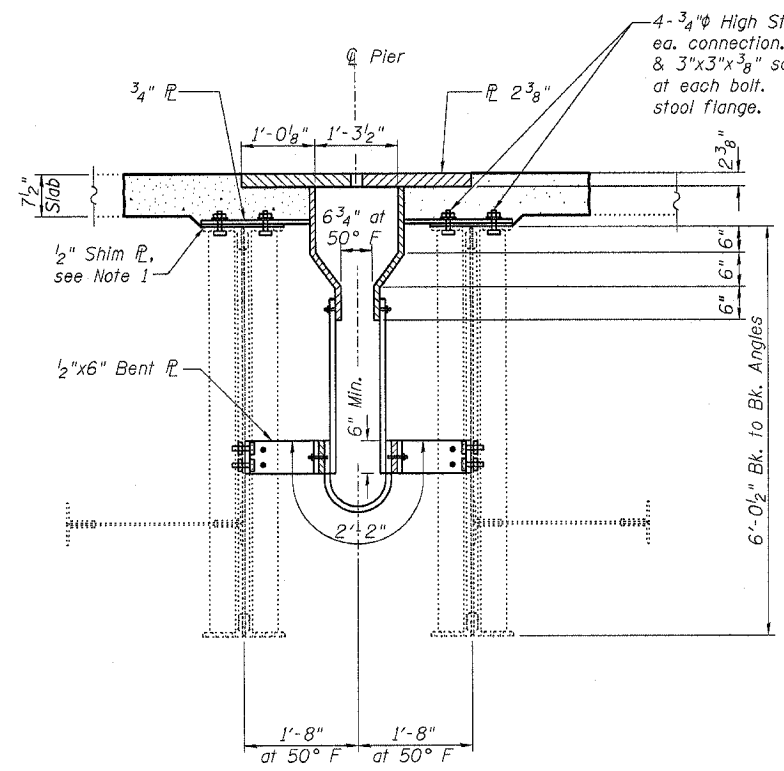


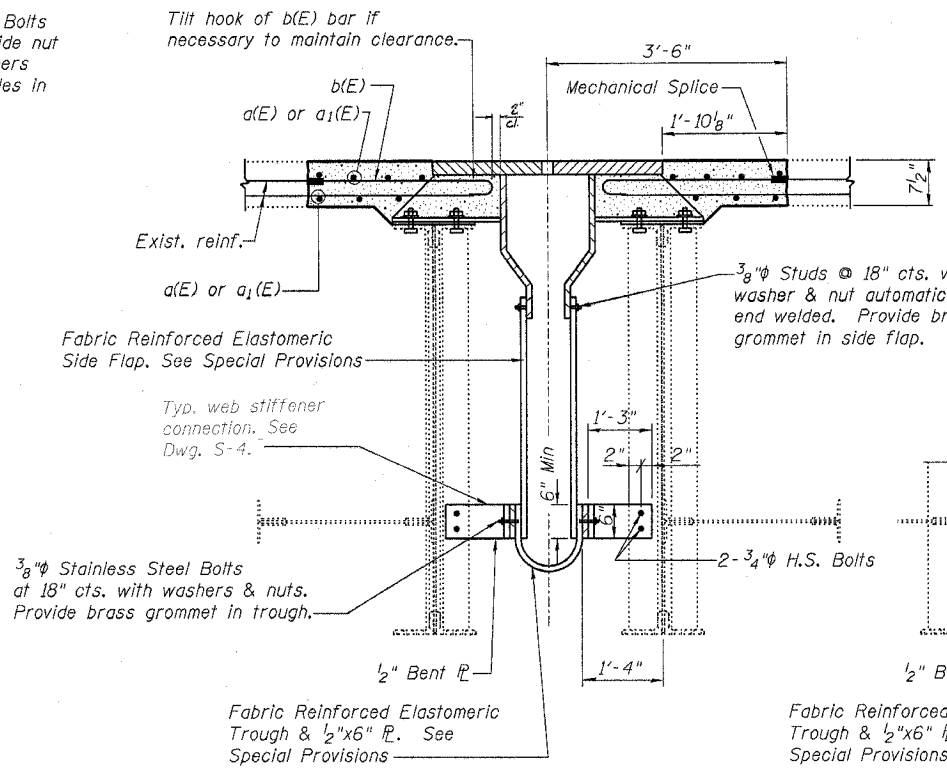
Contract #64C01

**NOTES**

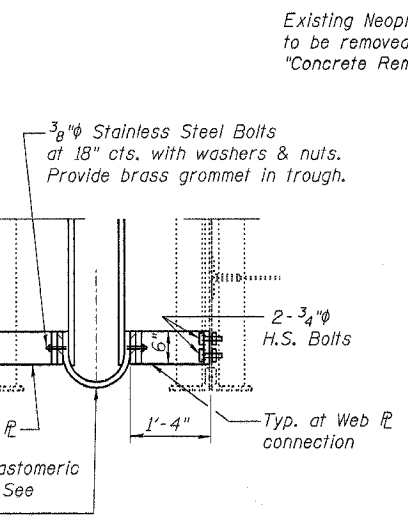
1. Provide 1/2" normal shim, two 1/4" shims, one 1/8" shim and one 1/16" shim for height adjustment.



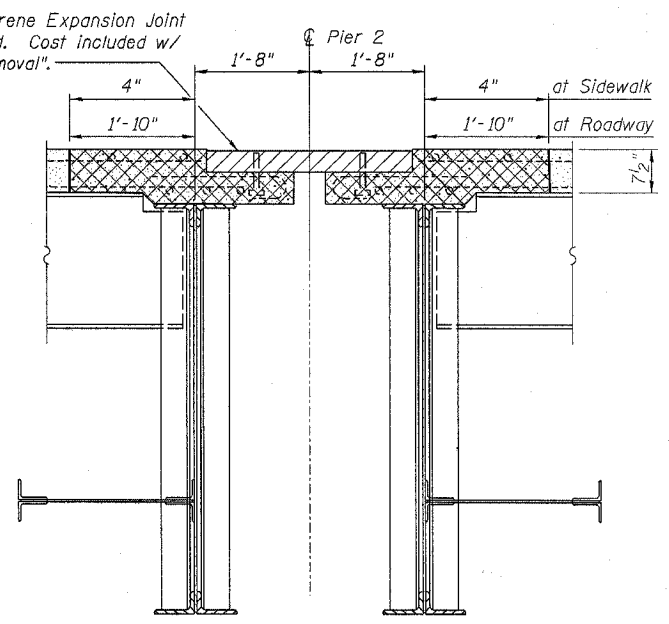
**SECTION A**



**SECTION B**

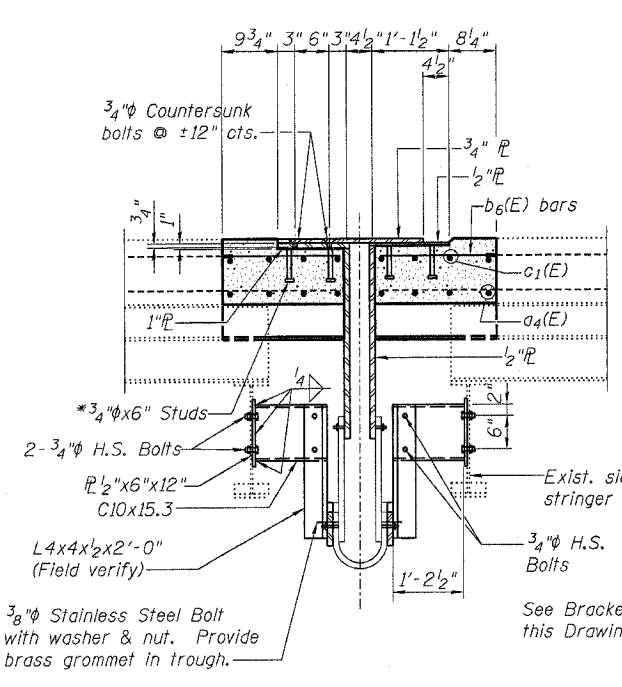


**SECTION A<sup>1</sup>**

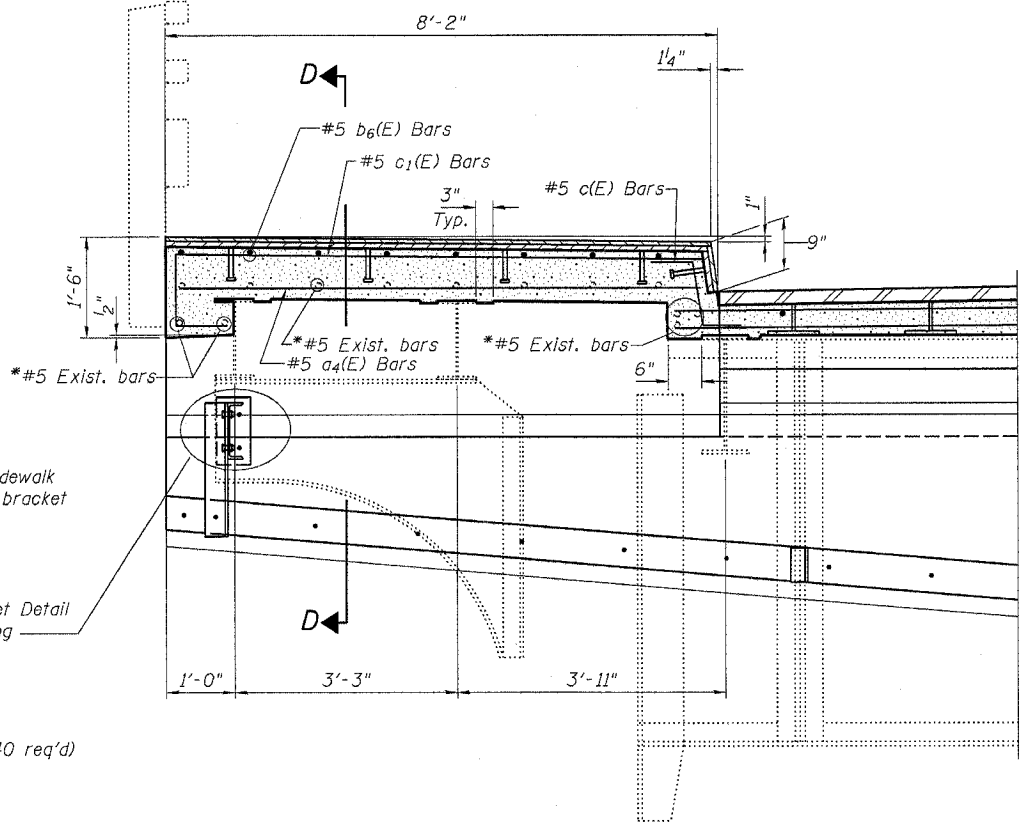


**EXISTING SECTION B-B**

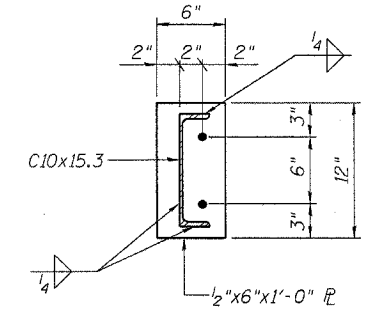
Cross hatched area indicates concrete removal.



**SECTION D-D**



**SECTION THRU SIDEWALK**



**BRACKET DETAIL**

\*Existing reinforcement extending into the removal area shall be cleaned, straightened, cut to fit, and incorporated into the new construction. Any reinforcement bars that are damaged during concrete removal shall be replaced with an approved bar splicer or anchorage system. Cost shall be included with "Concrete Removal".

\*3/4 inch x 6 inch Granular or Solid Flux Filled Headed Studs conforming to Art. 1006.32 of the Standard Spec's (40 req'd)

**TROUGH DETAILS**  
F.A. RT. 599 (US 67 OVER ROCK RIVER SOUTH CHANNEL AND ILLINOIS AND MISSISSIPPI CANAL) ROCK ISLAND COUNTY STATION 50+23.00 STRUCTURE NO. 081-0040

CHAMPAIGN, ILLINOIS  
CHICAGO, ILLINOIS  
EVANSVILLE, INDIANA  
INDIANAPOLIS, INDIANA  
KENDOSHA, WISCONSIN  
SPRING GREEN, WISCONSIN



REVISIONS		NOTE: DIMENSIONAL DATA IS NOT TO BE OBTAINED BY MEASURING ANY PORTION OF THIS DRAWING.	DRAWING NUMBER
NAME	DATE		