

F.A.P. RTE.	SECTION	COUNTY	TOTAL SHEETS	SHEET NO.
599	17(D)BR-2-M	Rock Island	12	1

INDEX OF SHEETS

1. Cover Sheet, Index of Sheets, Standards
2. Summary of Quantities, General Notes
3. -4. Traffic Control Plan Stage I
5. -6. Traffic Control Plan Stage II
7. General Plan and Elevation
8. Concrete Removal
9. Partial Plan
10. Trough & Deck Sections
11. Trough Details
12. Trough Details

STATE OF ILLINOIS
DEPARTMENT OF TRANSPORTATION
DIVISION OF HIGHWAYS
PROPOSED
HIGHWAY PLANS

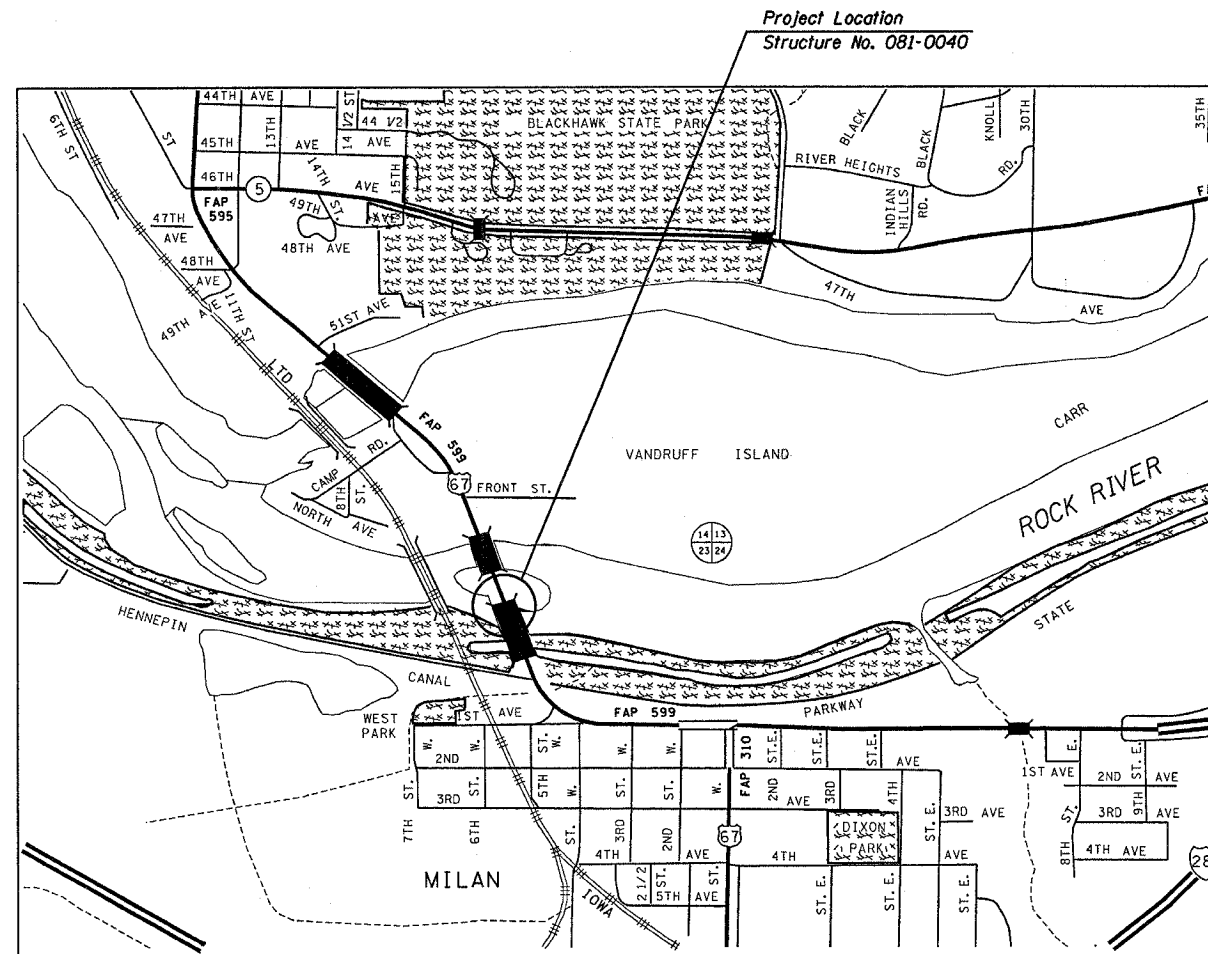
FAP ROUTE 599 (US 67)
SECTION 17 (D)BR-2-M
ROCK ISLAND COUNTY
C-92-032-06

D-92-022-06



STANDARDS

- 701606-04 Urban Lane Closure, Multilane, 2W with Mountable Median
- 702001-06 Traffic Control Devices
- 701321-08 Lane Closure, 2L, 2W, Bridge Repair with Barrier
- 704001-02 Temporary Concrete Barrier



STATE OF ILLINOIS
 DEPARTMENT OF TRANSPORTATION
 DIVISION OF HIGHWAYS

SUBMITTED March 27, 2006
Gregory L. Mountain
 DEPUTY DIRECTOR OF HIGHWAYS, REGION ENGINEER

May 12, 2006
Mike Hine
 ENGINEER OF DESIGN AND ENVIRONMENT

May 12, 2006
Milton R. Sosa, P.E./D
 DIRECTOR OF HIGHWAYS, CHIEF ENGINEER

PRINTED BY THE AUTHORITY
OF THE STATE OF ILLINOIS

J.U.L.I.E.
 JOINT UTILITY LOCATION INFORMATION FOR EXCAVATION
 1-800-892-0123

F.A.P. RTE.	SECTION	COUNTY	TOTAL SHEETS	SHEET NO.
599	17(D)BR-2-M	Rock Island	12	2
STA. _____		TO STA. _____		
FED. ROAD DIST. NO. _____		ILLINOIS FED. AID PROJECT		

SUMMARY OF QUANTITIES

paycode	description	units	total quantity
			100% State
			SFTY-2A
			URBAN
42001300	PROTECTIVE COAT	SQ YD	29
50102400	CONCRETE REMOVAL	CU YD	10.5
50300255	CONCRETE SUPERSTRUCTURE	CU YD	9.7
50500405	FURNISHING AND ERECTING STRUCTURAL STEEL	POUND	52220
50800205	REINFORCEMENT BARS, EPOXY COATED	POUND	1510
67100100	MOBILIZATION	L SUM	1
70102625	TRAFFIC CONTROL AND PROTECTION, STANDARD 701606	L SUM	1
70300100	SHORT-TERM PAVEMENT MARKING	FOOT	1180
70300500	PAVEMENT MARKING TAPE, TYPE III	FOOT	9420
70301000	WORK ZONE PAVEMENT MARKING REMOVAL	SQ FT	4070
70400100	TEMPORARY CONCRETE BARRIER	FOOT	400
70400200	RELOCATE TEMPORARY CONCRETE BARRIER	FOOT	400
78300100	PAVEMENT MARKING REMOVAL	SQ FT	788
X0321781	MECHANICAL SPLICE	EACH	136
Z0022400	FABRIC REINFORCED ELASTOMERIC TROUGH	FOOT	69
* Z0030250	IMPACT ATTENUATORS, TEMPORARY (NON- REDIRECTIVE), TEST LEVEL 3	EACH	2
* Z0030350	IMPACT ATTENUATORS, RELOCATE (NON- REDIRECTIVE), TEST LEVEL 3	EACH	2

* SFTY-3N

GENERAL NOTES

This structure will retain the same number 081-0040.

The contractor shall submit four copies of the required shop drawings for review and approval to the Bureau of Bridges and Structures, 2300 South Dirksen Parkway, Springfield, IL 62764. After approval of initial submittal, the contractor shall submit one set of shop drawings to Eric Harm, Engineer of Materials, 126 East Ash Street, Springfield, IL 62706, and eight (8) sets of shop drawings to be distributed to:

- District 2 District Engineer (1)
- Fabricator (1)
- Contractor (2)
- Resident Engineer (2)
- District 2 Bureau of Materials (2)

At bridge expansion joints, if temporary expansion joint bulkheads are attached to adjacent deck slabs or abutments for support, the Contractor shall cut the attachments as soon as the concrete has set to prevent joint damage due to horizontal contraction or expansion.

The Contractor shall be responsible for protecting utility property during construction operations as outlined in Article 107.31 of the Standard Specifications. A minimum of 48 hours advance notice is required for non-emergency work. The JULIE number is 800-892-0123. The following listed utilities located within the project limits or immediately adjacent to the project construction limits are members of JULIE:

- SBC/Ameritech
- MidAmerican Energy Company
- Mediacom
- Village of Milan
- City of Rock Island

The Resident Engineer shall contact the Bureau of Operations one or two days before the finish of each stage so that locations can be painted.

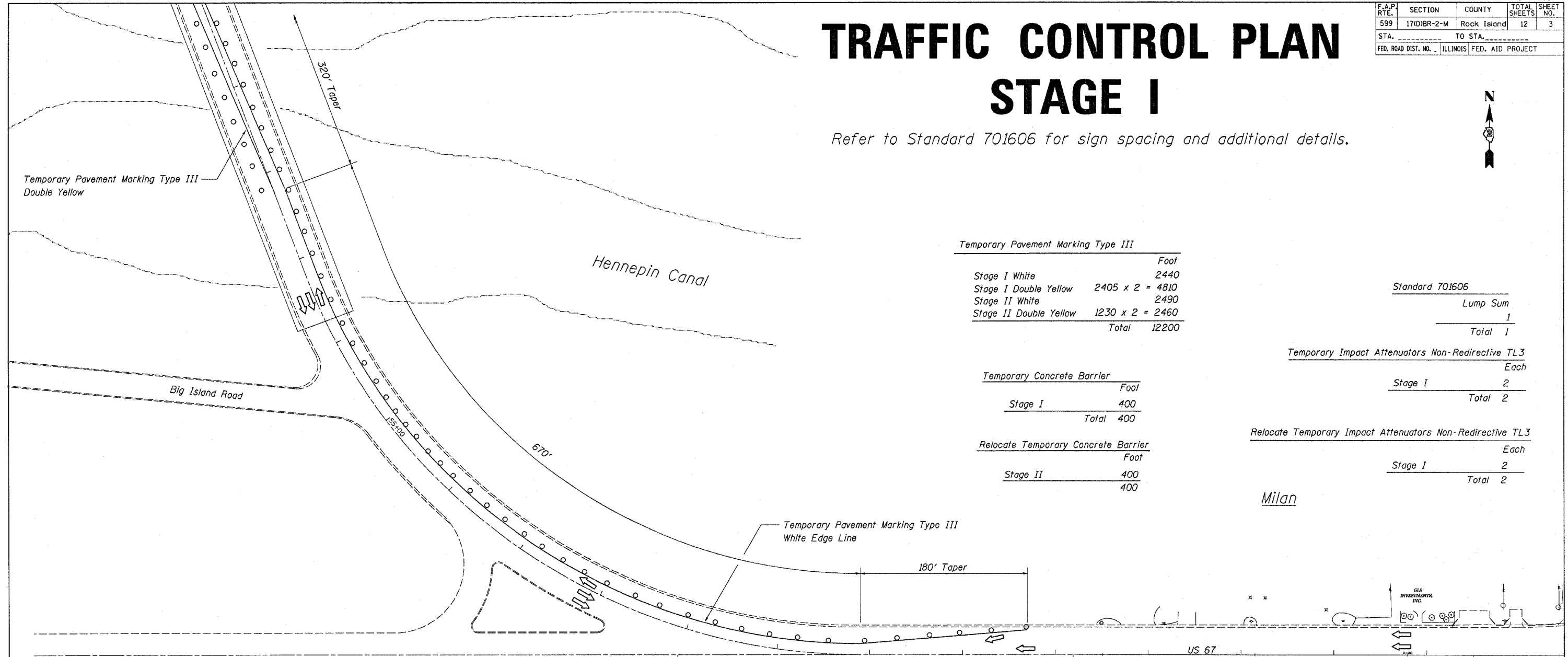
Summary of Quantities
US 67 OVER SOUTH CHANNEL
OF THE ROCK RIVER
FAP Route 599 (US 67)
Section 17(D)BR-2-M
Rock Island County
Structure No. 081-0040

F.A.P. RTE.	SECTION	COUNTY	TOTAL SHEETS	SHEET NO.
599	17(D)BR-2-M	Rock Island	12	3
STA. _____		TO STA. _____		
FED. ROAD DIST. NO. _____		ILLINOIS FED. AID PROJECT		

TRAFFIC CONTROL PLAN

STAGE I

Refer to Standard 701606 for sign spacing and additional details.



Temporary Pavement Marking Type III

	Foot
Stage I White	2440
Stage I Double Yellow	2405 x 2 = 4810
Stage II White	2490
Stage II Double Yellow	1230 x 2 = 2460
Total	12200

Standard 701606

Lump Sum	1
Total	1

Temporary Concrete Barrier

	Foot
Stage I	400
Total	400

Temporary Impact Attenuators Non-Redirective TL3

Each	
Stage I	2
Total	2

Relocate Temporary Concrete Barrier

	Foot
Stage II	400
Total	400

Relocate Temporary Impact Attenuators Non-Redirective TL3

Each	
Stage I	2
Total	2

Pavement Marking Removal

	Sq Ft
Stage I	
Double Yellow 320' Taper	214
540' Taper	360
Stage II	
Double Yellow 320' Taper	214
Total	788

Short Term Pavement Marking

	Foot
Stage I	
Double Yellow 320' Taper	320
540' Taper	540
Stage II	
Double Yellow 320' Taper	320
Total	1180

Traffic Control Plan
 US 67 OVER SOUTH CHANNEL
 OF THE ROCK RIVER
 FAP Route 599 (US 67)
 Section 17(D)BR-2-M
 Rock Island County
 Structure No. 081-0040

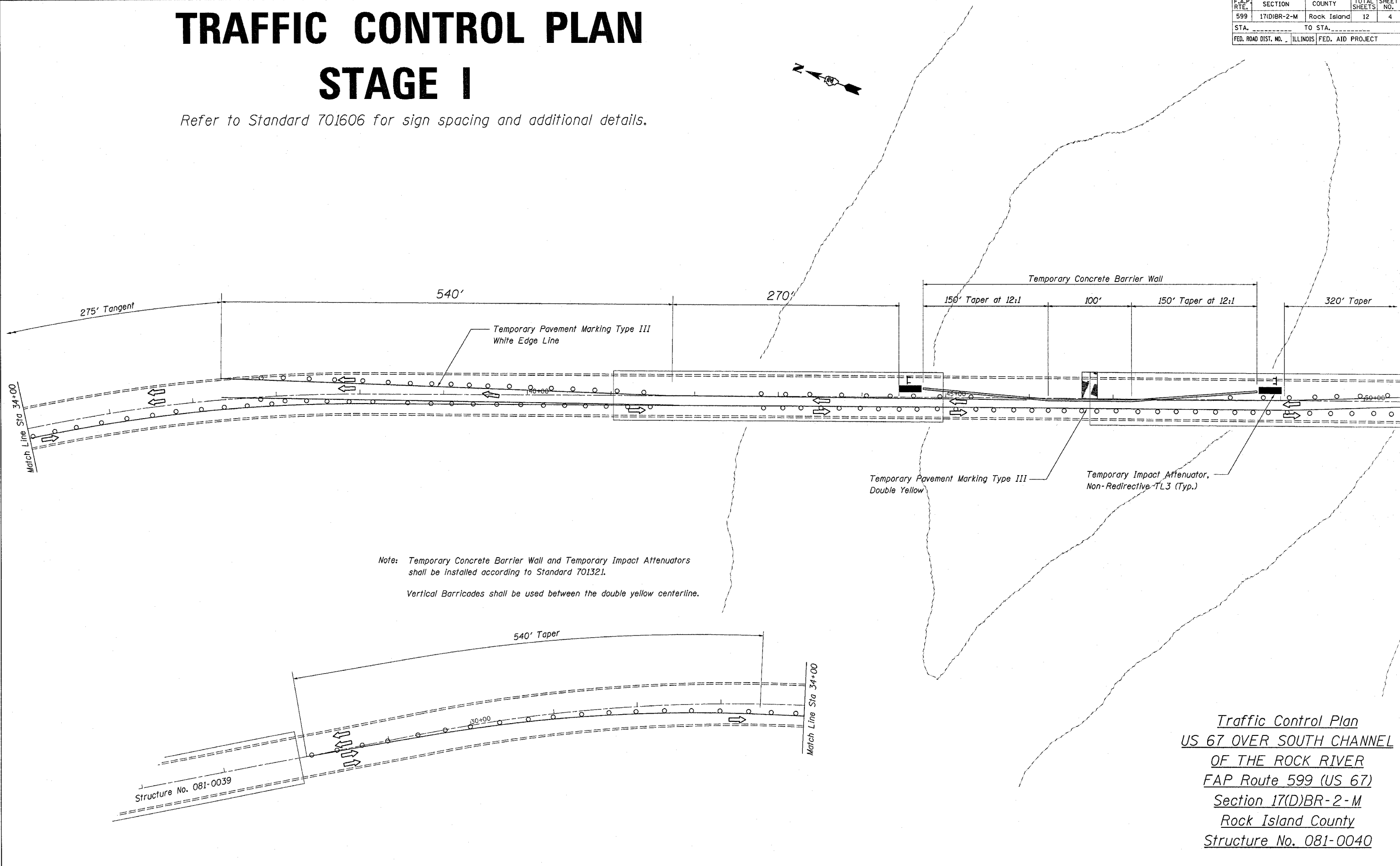
PLOT DATE = Sat Mar 25 09:51:33 2006
 FILE NAME = G:\b\p\m\p\Rock_Island_County\0810040\0810040.dgn
 PLOT SCALE = 56.00000 / 1 IN.
 USER NAME = jmkcdj

F.A.P. RTE.	SECTION	COUNTY	TOTAL SHEETS	SHEET NO.
599	17(D)BR-2-M	Rock Island	12	4
STA. _____		TO STA. _____		
FED. ROAD DIST. NO. _____		ILLINOIS FED. AID PROJECT		

TRAFFIC CONTROL PLAN

STAGE I

Refer to Standard 701606 for sign spacing and additional details.



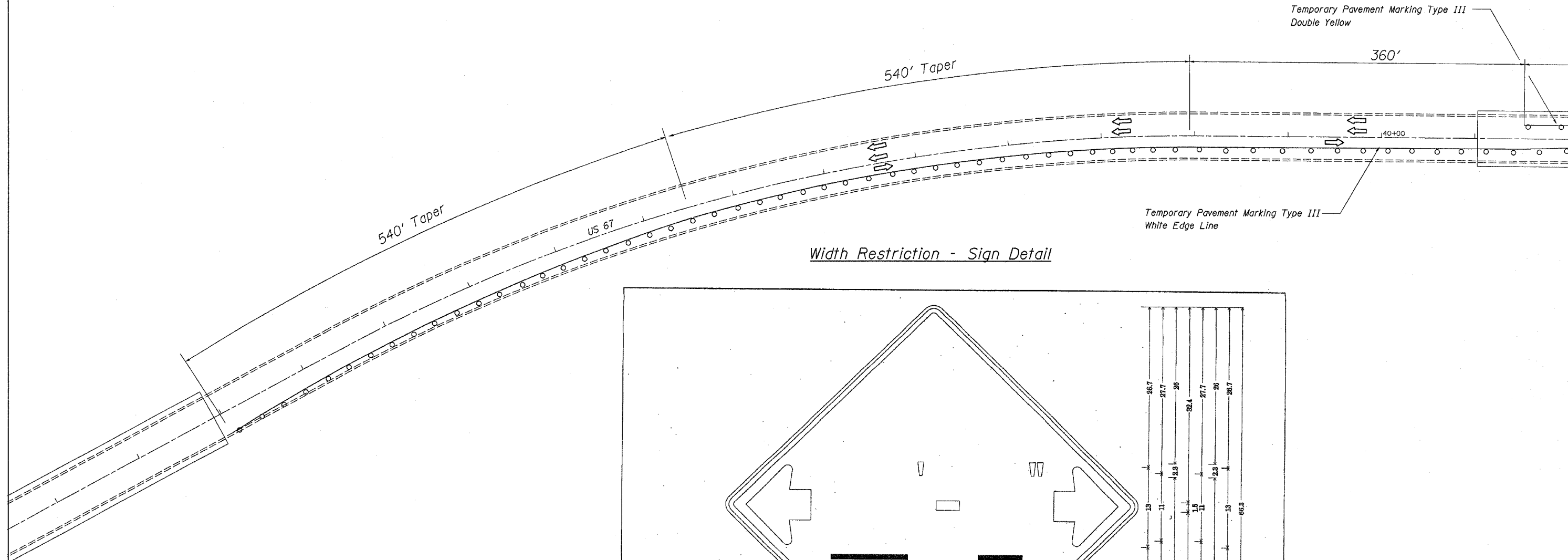
Traffic Control Plan
US 67 OVER SOUTH CHANNEL
OF THE ROCK RIVER
 FAP Route 599 (US 67)
 Section 17(D)BR-2-M
 Rock Island County
 Structure No. 081-0040

PLT DATE = Sat Mar 25 09:51:38 2006
 FILE NAME = O:\n\volpema\frank_inland\County\0810040\0810040.dgn
 PLOT SCALE = 50.00000 / IN.
 USER NAME = lmedj

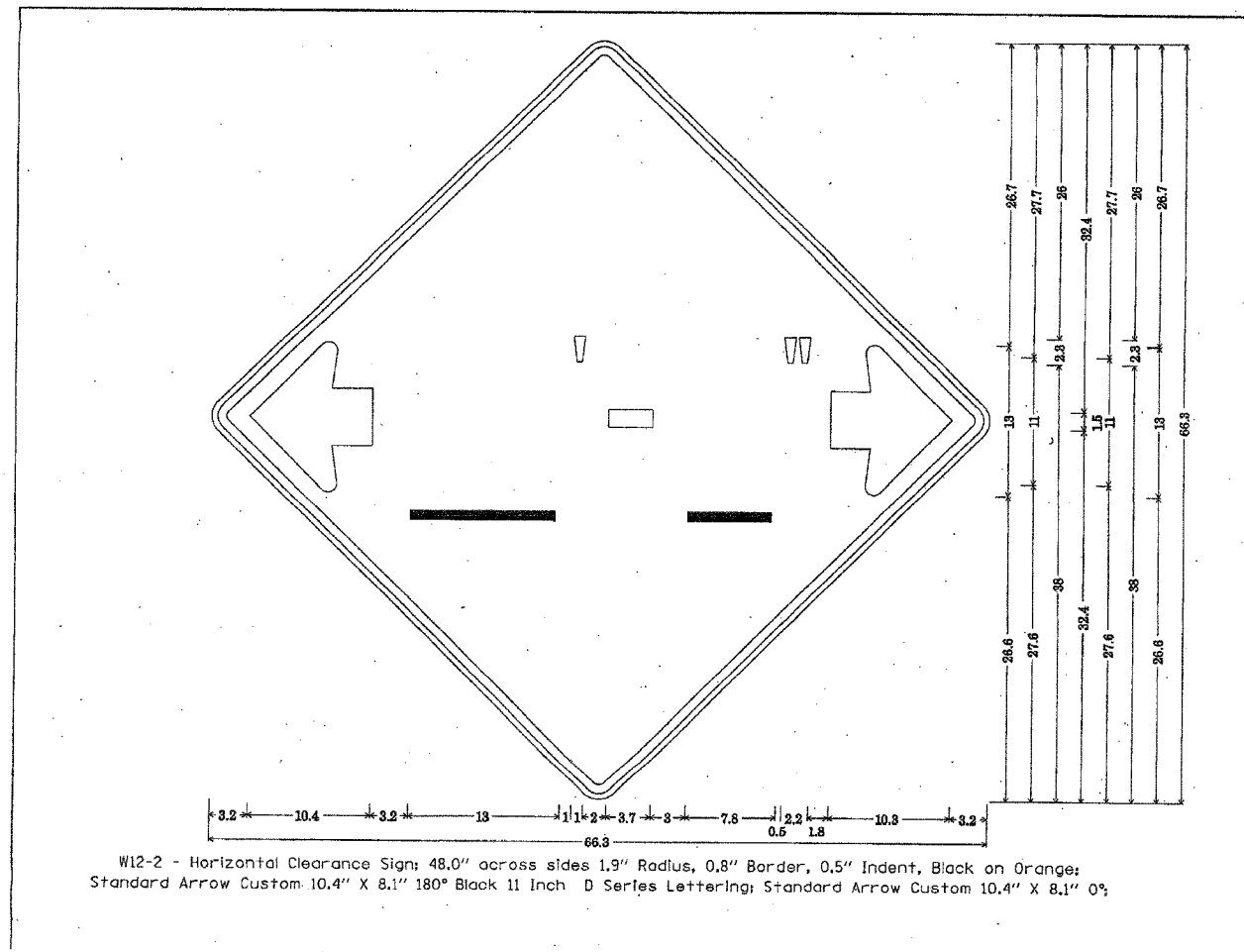
TRAFFIC CONTROL PLAN STAGE II

Refer to Standard 701606 for sign spacing and additional details.

CONTRACT NO. 64C01				
F.A.P. RTE.	SECTION	COUNTY	TOTAL SHEETS	SHEET NO.
599	17(D)BR-2-M	Rock Island	12	5
STA. _____		TO STA. _____		
FED. ROAD DIST. NO. _____		ILLINOIS FED. AID PROJECT		



Width Restriction - Sign Detail



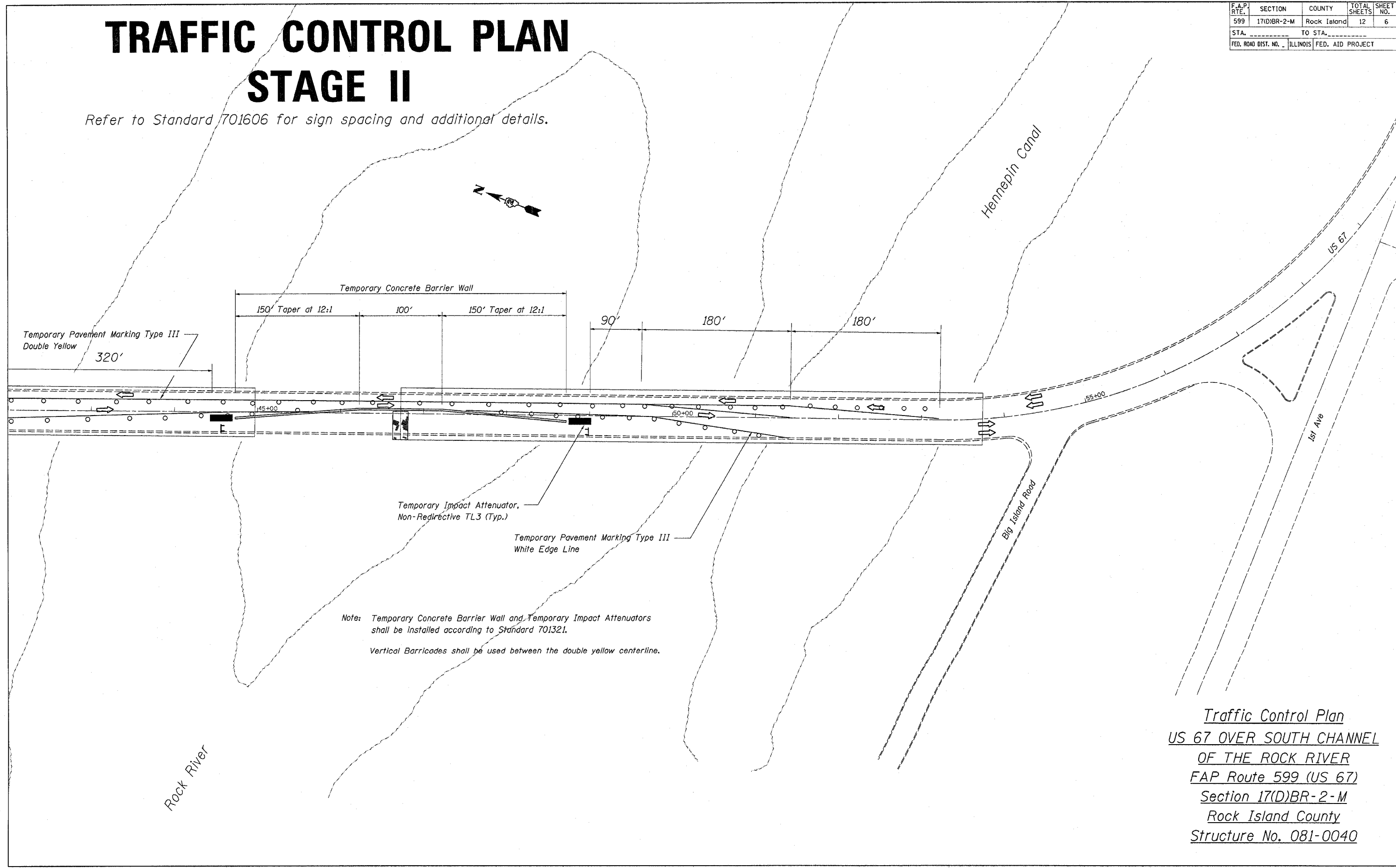
*Traffic Control Plan
US 67 OVER SOUTH CHANNEL
OF THE ROCK RIVER
FAP Route 599 (US 67)
Section 17(D)BR-2-M
Rock Island County
Structure No. 081-0040*

PLOT DATE = Sat Mar 25 09:42:33 2006
FILE NAME = D:\Users\jplens\Rock Island County\0810040.dgn
PLOT SCALE = 1/8" = 1'-0"
USER NAME = jplens

F.A.P. RTE.	SECTION	COUNTY	TOTAL SHEETS	SHEET NO.
599	17(D)BR-2-M	Rock Island	12	6
STA.		TO STA.		
FED. ROAD DIST. NO.		ILLINOIS	FED. AID PROJECT	

TRAFFIC CONTROL PLAN STAGE II

Refer to Standard 701606 for sign spacing and additional details.



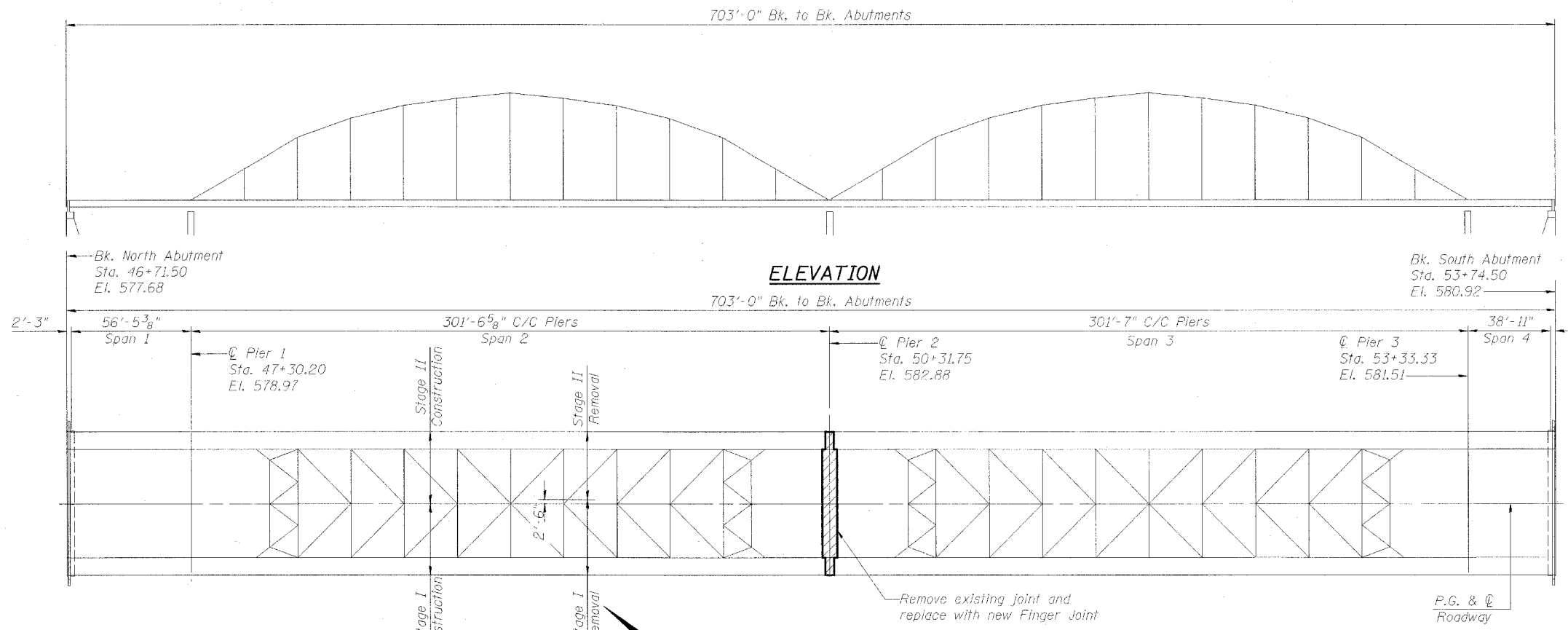
Note: Temporary Concrete Barrier Wall and Temporary Impact Attenuators shall be installed according to Standard 701321.
Vertical Barricades shall be used between the double yellow centerline.

*Traffic Control Plan
US 67 OVER SOUTH CHANNEL
OF THE ROCK RIVER
FAP Route 599 (US 67)
Section 17(D)BR-2-M
Rock Island County
Structure No. 081-0040*

PLOT DATE = Sat Mar 25 09:51:46 2006
FILE NAME = D:\b\y\plans\Rock Island County\0810040\0810040.dgn
PLOT SCALE = 56.8000 / 1" = 100'
USER NAME = lmedj

GENERAL NOTES

- Contract #64001
- All new structural steel shall conform to AASHTO Classification M-270 Gr. 36, unless otherwise noted.
 - All new fasteners shall be high strength bolts. Holes shall be subpunched or subdrilled $\frac{1}{16}$ " dia. and reamed in the field to $\frac{3}{16}$ " dia. for $\frac{3}{4}$ " dia. bolts, unless otherwise noted. Holes shall be subpunched and subdrilled $\frac{13}{16}$ " dia. and reamed in the field to $\frac{15}{16}$ " dia. for $\frac{1}{8}$ " dia. bolts, unless otherwise noted.
 - Plan dimensions and details relative to existing structure have been taken from existing plans and are subject to nominal construction variations. It shall be the Contractor's responsibility to verify such dimensions and details in the field and make necessary approved adjustments prior to construction or ordering materials. Such variations shall not be cause for additional compensation for a change in the scope of the work, however, the Contractor will be paid for the quantity actually furnished at the unit price bid for the work.
 - Reinforcement bars shall conform to the requirements of AASHTO M-31, or M-322 Grade 60.
 - Finger Plate Expansion Joints shall be assembled in the proper position with the ends in place and shall be left assembled for shop inspection.
 - The finger plates shall be flame cut as provided in Article 505.04(k) of the Standard Specifications.
 - Existing structural steel shall only be cleaned and painted as required by the Special Provisions "Cleaning and Painting Contact Surface Areas of Existing Steel Structures".
 - Tapered shims shall be added under the stools, as required by the Engineer, to make a smooth finger joint. Cost shall be included with Furnishing and Erecting Structural Steel.
 - Cost of removal and/or re-installation of all members necessary to complete the work as detailed on the plans and as specified in the Special Provisions shall be included in the cost of Furnishing and Erecting Structural Steel.
 - All structural steel shall be shop painted with the inorganic zinc rich primer per AASHTO M300, Type I. Cost included with Furnishing and Erecting Structural Steel.
 - Calculated weight of new structural steel = 37,520 Pounds (M-270 Gr. 36).
14,700 Pounds (M-270 Gr. 50).
 - Joint openings shall be adjusted according to Article 503.10(c) of the Std. Spec's. when the deck is poured at an ambient temperature other than 50° F.
 - Prior to pouring the new concrete deck or placing the new finger plates, all loose rust, loose mill scale and other loose potentially detrimental foreign matter shall be removed from the surfaces of the beams or girders in contact with concrete. The cost of this work will be included in the pay item covering removal of the existing concrete. All heavy rust and other tightly adhered potentially detrimental foreign matter shall also be removed from the surfaces of the beams or girders in contact with concrete. Tightly adhered paint may remain unless otherwise noted. This removal shall be accomplished by methods that will not damage the steel. The cost of this work will be paid for according to Article 109.04 of The Standard Specifications.
 - The "Concrete Superstructure" shall be self-consolidating concrete. See Special Provisions for "Self-Consolidating Concrete for Cast-in-place Construction".
 - All Construction Joints shall be bonded.



ELEVATION

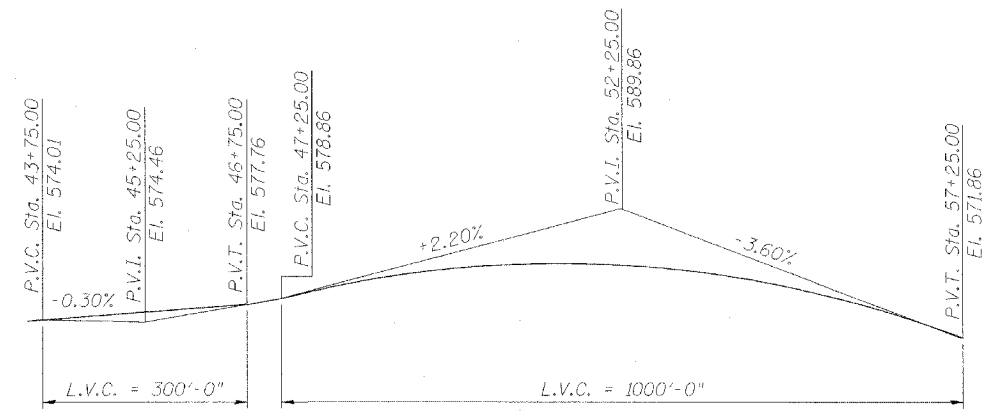
PLAN

DESIGN STRESSES

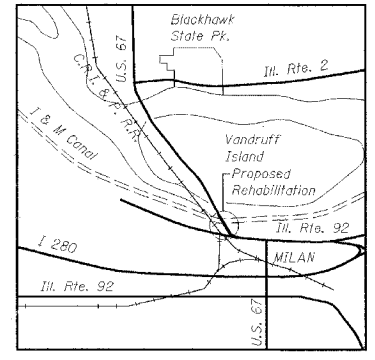
NEW CONSTRUCTION
 $f_c = 3,500$ psi
 $f_y = 60,000$ psi (reinforcement)
 $F_y = 50,000$ psi Structural Steel M270 Grade 50
 $F_y = 36,000$ psi Structural Steel M270 Grade 36

TOTAL BILL OF MATERIAL

ITEM	UNIT	QUANTITY
Concrete Removal	Cu. Yd.	10.5
Concrete Superstructure	Cu. Yd.	9.7
Reinforcement Bars, Epoxy Coated	Pound	1,510
Furnishing and Erecting Structural Steel	Pound	52,220
Mechanical Splice	Each	136
Fabric Reinforced Elastomeric Trough	Foot	69
Protective Coat	Sq. Yd.	29



PROFILE U.S. ROUTE 67



LOCATION SKETCH

GENERAL PLAN AND ELEVATION
 F.A. RT. 599 (US 67 OVER ROCK RIVER SOUTH CHANNEL AND ILLINOIS AND MISSISSIPPI CANAL)
 ROCK ISLAND COUNTY
 STATION 50+23.00
 STRUCTURE NO. 081-0040



Majid Mobassehi
 Structural Engineer
 Clark Dietz, Inc.

DATE: 2-24-2006
 License Expires 11-30-2006

CHAMPAIGN, ILLINOIS
 CHICAGO, ILLINOIS
 EVANSVILLE, INDIANA
 INDIANAPOLIS, INDIANA
 KENOSHA, WISCONSIN
 SPRING GREEN, WISCONSIN

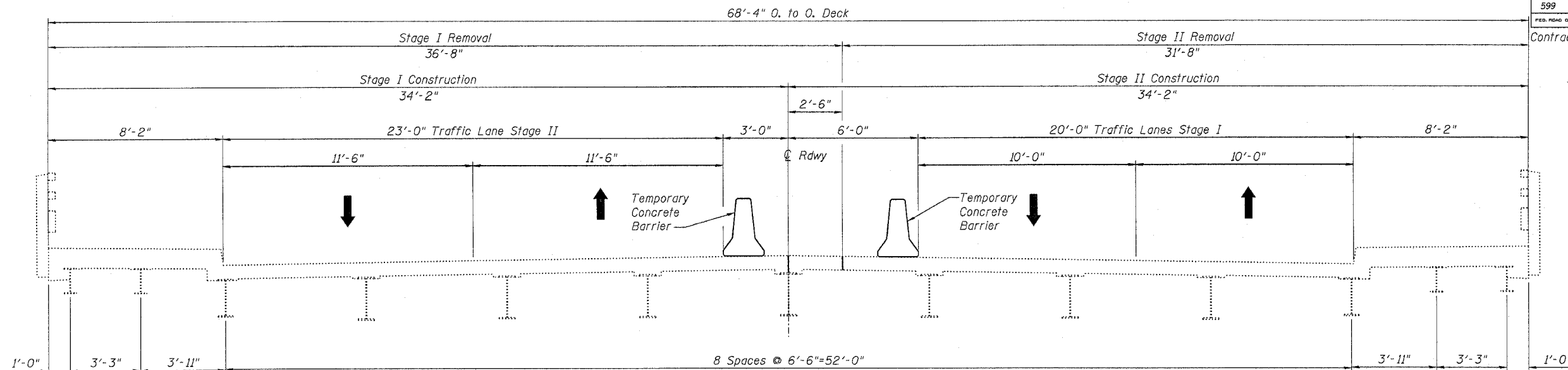


REVISIONS	
NAME	DATE

NOTE: DIMENSIONAL DATA IS NOT TO BE OBTAINED BY SCALING ANY PORTION OF THIS DRAWING.

DESIGNED BY: M.M. PROJECT NO: 102303
 DRAWN BY: MEW DATE: 1/06
 CHECKED BY: M.M.
 APPROVED BY: M.M.
 ACTIVITY: DETAILS

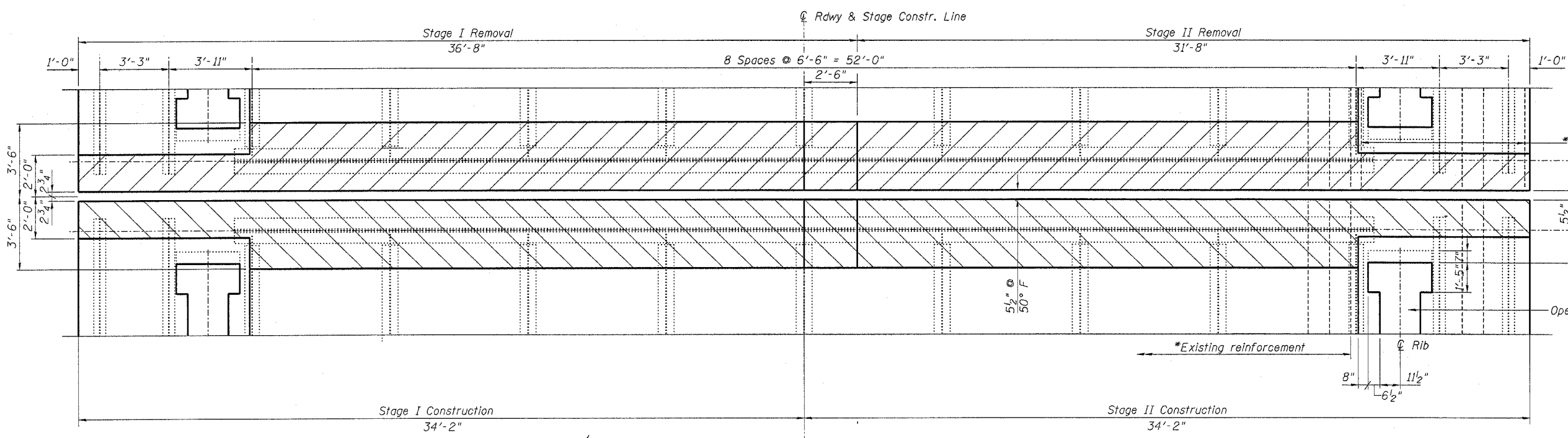
DRAWING NUMBER
S-1



STAGE CONSTRUCTION DIAGRAM
(Looking North)

NOTES
1. For Sections thru existing roadway and sidewalk see Dwg. S-5.

LEGEND
Concrete Removal



PARTIAL PLAN SHOWING CONCRETE REMOVAL

*Existing reinforcement extending into the removal area shall be cleaned, straightened, cut to fit, and incorporated into the new construction. Any reinforcement bars that are damaged during concrete removal shall be replaced with an approved bar splicer or anchorage system. Cost shall be included with "Concrete Removal".

CONCRETE REMOVAL
F.A. RT. 599 (US 67 OVER ROCK RIVER SOUTH CHANNEL AND ILLINOIS AND MISSISSIPPI CANAL) ROCK ISLAND COUNTY STATION 50+23.00 STRUCTURE NO. 081-0040

CHAMPAIGN, ILLINOIS
CHICAGO, ILLINOIS
EVANSVILLE, INDIANA
INDIANAPOLIS, INDIANA
KENDSHA, WISCONSIN
SPRING GREEN, WISCONSIN

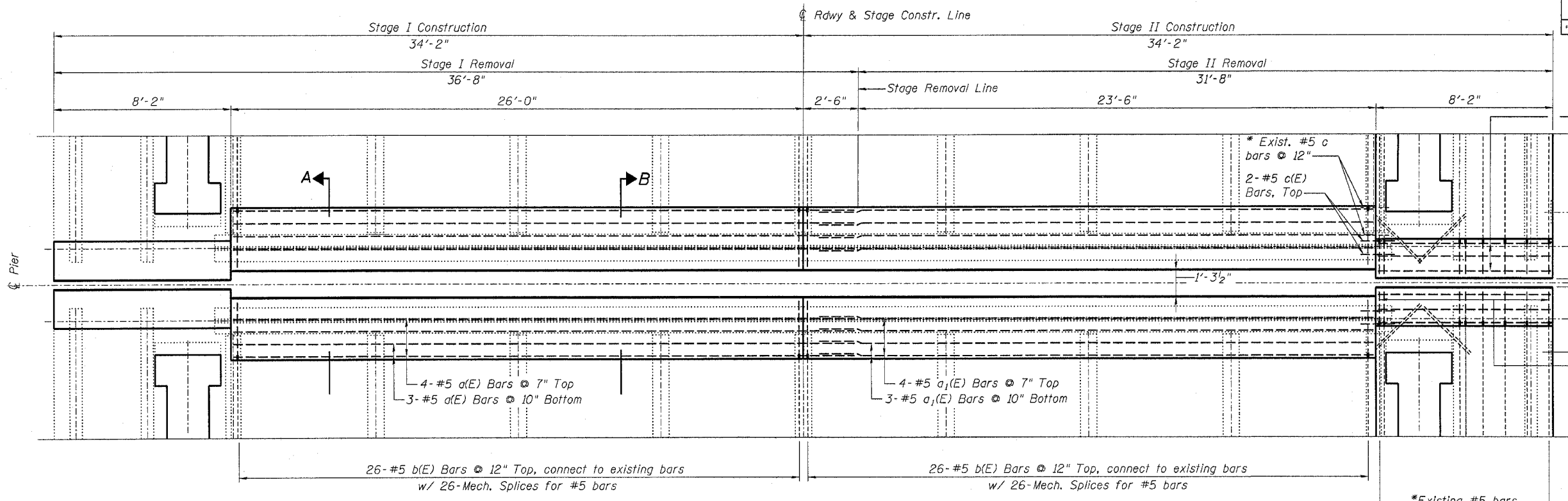
Clark Dietz

REVISIONS	
NAME	DATE

NOTE: DIMENSIONAL DATA IS NOT TO BE OBTAINED BY SCALING ANY PORTION OF THIS DRAWING.

DESIGNED BY: M.M. PROJECT NO. 102303
DRAWN BY: MEW DATE: 1/06
CHECKED BY: M.M.
APPROVED BY: M.M.
ACTIVITY INITIALS

DRAWING NUMBER
S-2



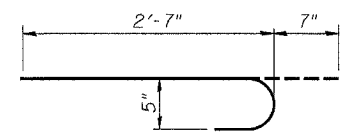
4- #5_{c1}(E) Bars @ 7" Top
4- #5_{a4}(E) Bars @ 7" Bottom

8- #5_{b6}(E) Bars @ 12" Top, connect to existing bars w/ 8-Mech. Splices for #5 bars
BILL OF MATERIAL

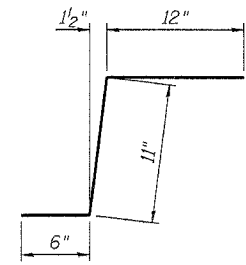
Bar	No.	Size	Length	Shape
a(E)	14	#5	29'-0"	—
a ₁ (E)	14	#5	26'-6"	—
a ₄ (E)	16	#5	7'-9"	—
b(E)	104	#5	3'-2"	U
b ₆ (E)	32	#5	1'-5"	—
c(E)	8	#5	2'-5"	—
c ₁ (E)	16	#5	9'-5"	—
Concrete Removal		Cu. Yds.	10.5	
Concrete Superstructure		Cu. Yds.	9.7	
Reinforcement Bars, Epoxy Coated		Pound	1,510	
Mechanical Splice		Each	136	

PARTIAL PLAN SHOWING CONCRETE REPLACEMENT
(East sidewalk reinforcement is shown, west sidewalk is similar)

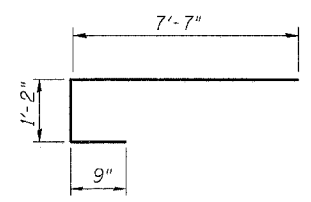
*Existing reinforcement extending into the removal area shall be cleaned, straightened, cut to fit, and incorporated into the new construction. Any reinforcement bars that are damaged during concrete removal shall be replaced with an approved bar splicer or anchorage system. Cost shall be included with "Concrete Removal".



BAR b(E)



BAR c(E)



BAR c₁(E)

Reinforcement bars designated (E) shall be epoxy coated.
For Section A-A and B-B see Dwg. S-5.

PARTIAL PLAN

F.A. RT. 599 (US 67 OVER ROCK RIVER SOUTH CHANNEL AND ILLINOIS AND MISSISSIPPI CANAL)
ROCK ISLAND COUNTY
STATION 50+23.00
STRUCTURE NO. 081-0040

CHAMPAIGN, ILLINOIS
CHICAGO, ILLINOIS
EVANSVILLE, INDIANA
INDIANAPOLIS, INDIANA
KENOSHA, WISCONSIN
SPRING GREEN, WISCONSIN

Clark Dietz

REVISIONS	
NAME	DATE

NOTE: DIMENSIONAL DATA IS NOT TO BE OBTAINED BY SCALING ANY PORTION OF THIS DRAWING.

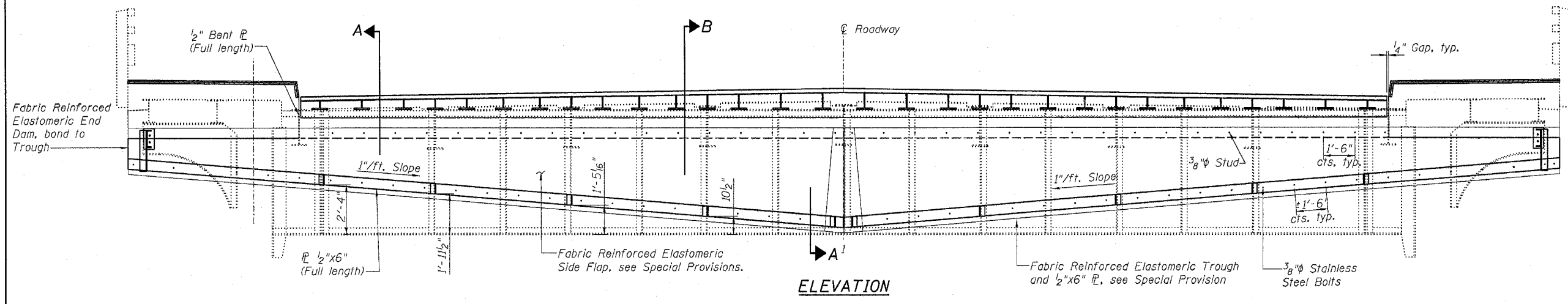
DESIGNED BY: M.M. PROJECT NO. 102383
DRAWN BY: M.E.W. DATE: 1/05
CHECKED BY: M.M.
APPROVED BY: M.M.

ACTIVITY INITIALS

DRAWING NUMBER
S-3

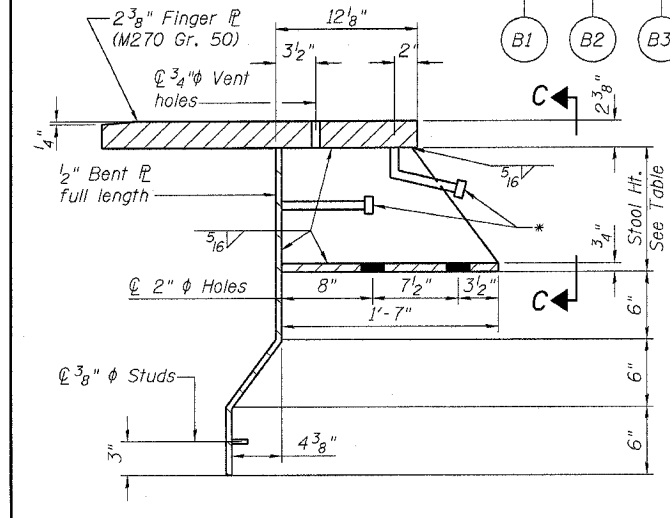
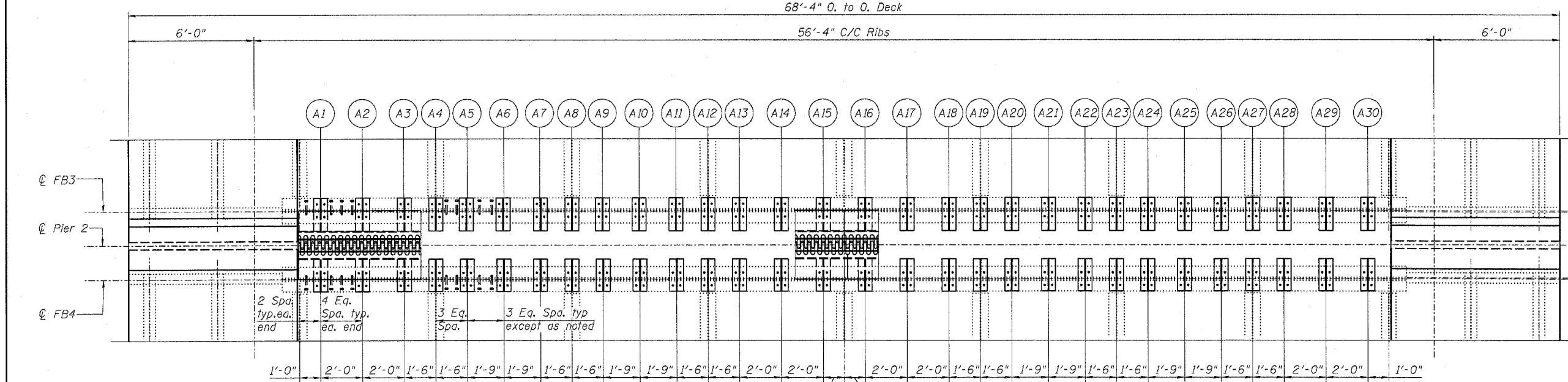
Contract #64C01

**FLOOR BEAM 3 FLOOR BEAM 4
(NORTH SIDE) (SOUTH SIDE)**

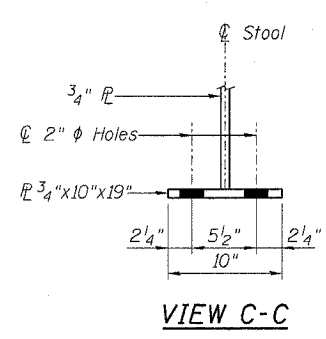


Stool No.	"Stool Height (Inches)"	Stool No.	"Stool Height (Inches)"
A1	5 3/8	B1	5 3/4
A2	5 3/4	B2	6 1/8
A3	6	B3	6 1/2
A4	6 1/4	B4	6 3/4
A5	6 5/8	B5	7
A6	7	B6	7 3/8
A7	7 3/8	B7	7 5/8
A8	7 5/8	B8	7 7/8
A9	8	B9	8 3/8
A10	8 1/2	B10	8 5/8
A11	8 7/8	B11	9 3/8
A12	9 1/4	B12	9 7/8
A13	9 1/2	B13	10
A14	9 3/4	B14	10 1/4
A15	10	B15	10 1/2
A16	10	B16	10 1/2
A17	9 5/8	B17	10
A18	9 1/4	B18	9 5/8
A19	8 7/8	B19	9 1/4
A20	8 5/8	B20	9
A21	8 1/4	B21	8 5/8
A22	7 7/8	B22	8 1/4
A23	7 5/8	B23	7 7/8
A24	7 1/4	B24	7 5/8
A25	6 7/8	B25	7 1/8
A26	6 1/2	B26	6 3/4
A27	6 1/4	B27	6 3/8
A28	5 7/8	B28	6
A29	5 3/8	B29	5 5/8
A30	5 1/8	B30	5 3/8

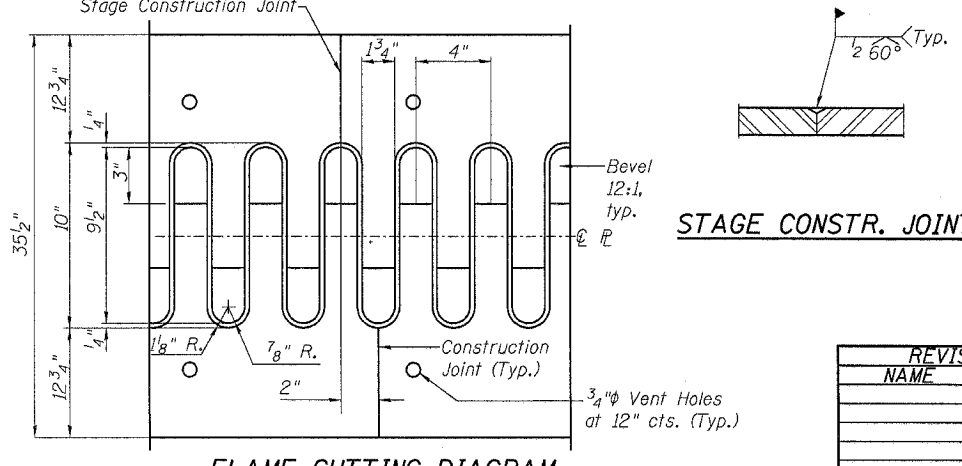
See Sections A-A and B-B on Dwg. S-5.



*3/4" φ x8" Granular or solid flux filled headed studs conforming to Art. 1006.32 of the Standard Specs. (96 req'd)



PLAN



TROUGH & DECK SECTIONS

F.A. RT. 599 (US 67 OVER ROCK RIVER SOUTH CHANNEL AND ILLINOIS AND MISSISSIPPI CANAL) ROCK ISLAND COUNTY STATION 50+23.00 STRUCTURE NO. 081-0040

CHAMPAIGN, ILLINOIS
CHICAGO, ILLINOIS
EVANSVILLE, INDIANA
INDIANAPOLIS, INDIANA
KENOSHA, WISCONSIN
SPRING GREEN, WISCONSIN

REVISIONS		DRAWING NUMBER
NAME	DATE	
		S-4

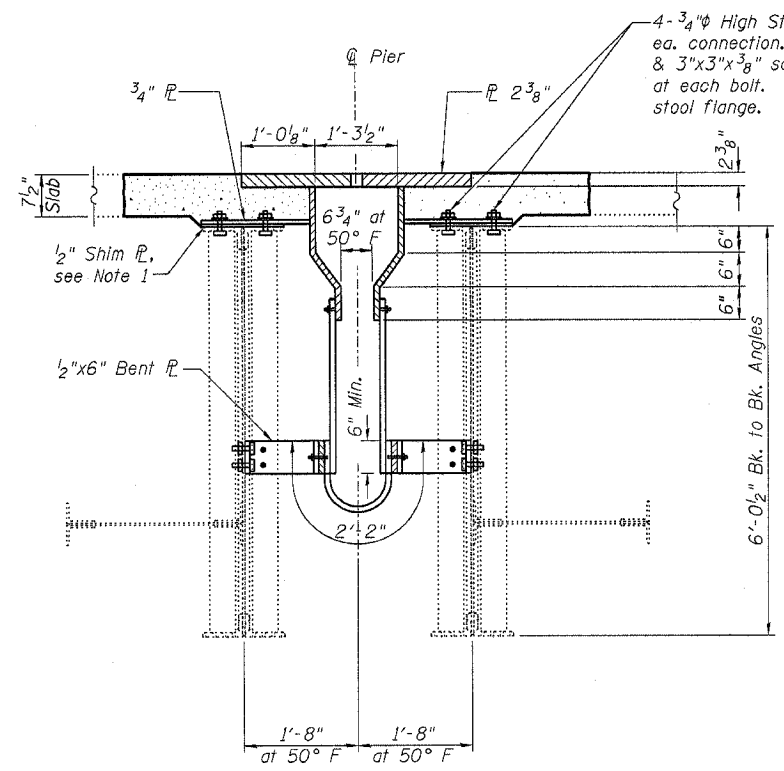
NOTED DIMENSIONAL DATA IS NOT TO BE OBTAINED BY SOLID ANY PORTION OF THIS DRAWING.

DESIGNED BY: M.M. PRINTED NO: 102383
DRAWN BY: MEW DATE: 1/86
CHECKED BY: M.M.
APPROVED BY: M.M.
ACTIVITY DETAILS

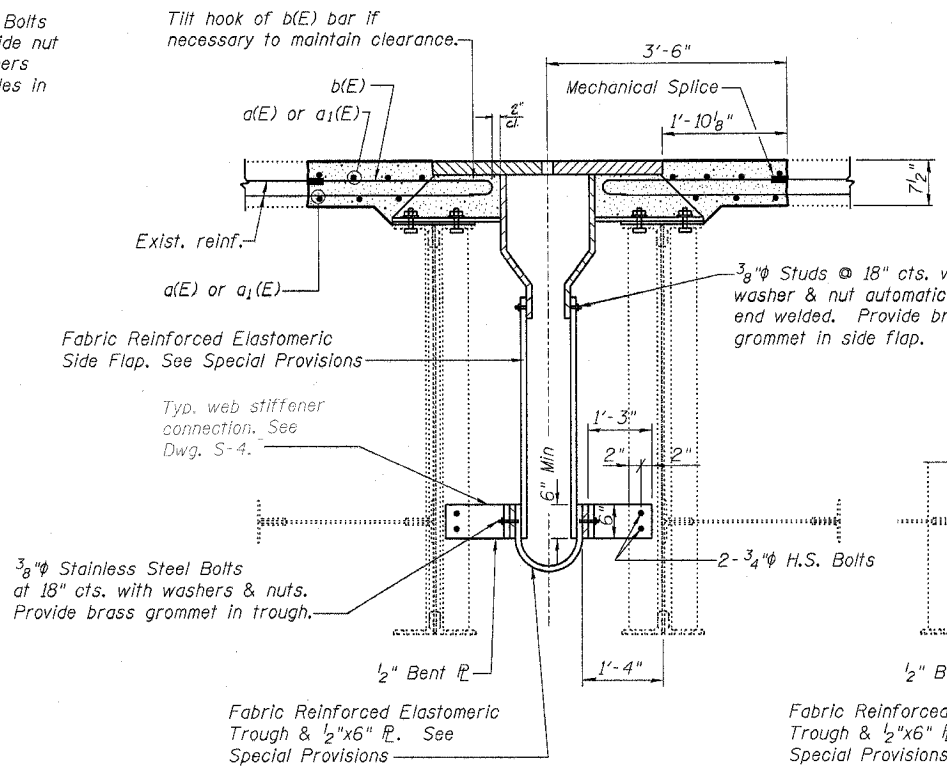
Contract #64C01

NOTES

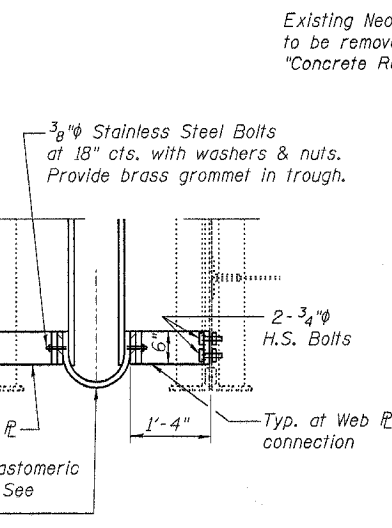
1. Provide 1/2" normal shim, two 1/4" shims, one 1/8" shim and one 1/16" shim for height adjustment.



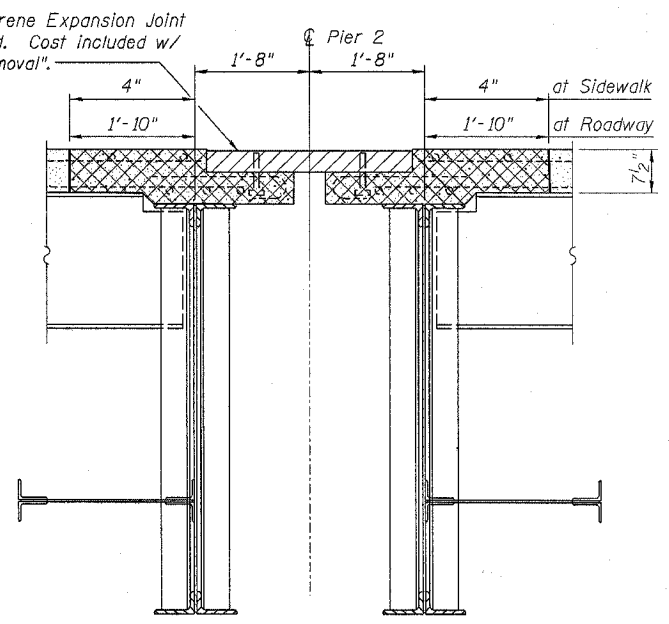
SECTION A



SECTION B

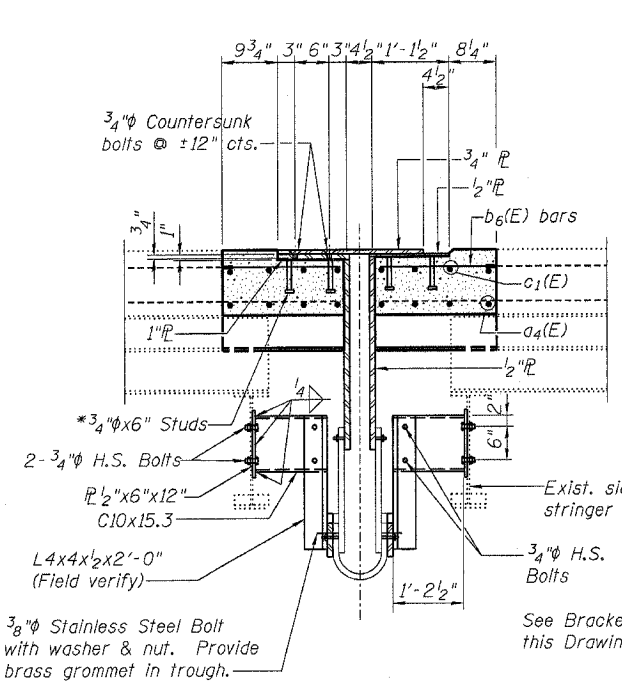


SECTION A1

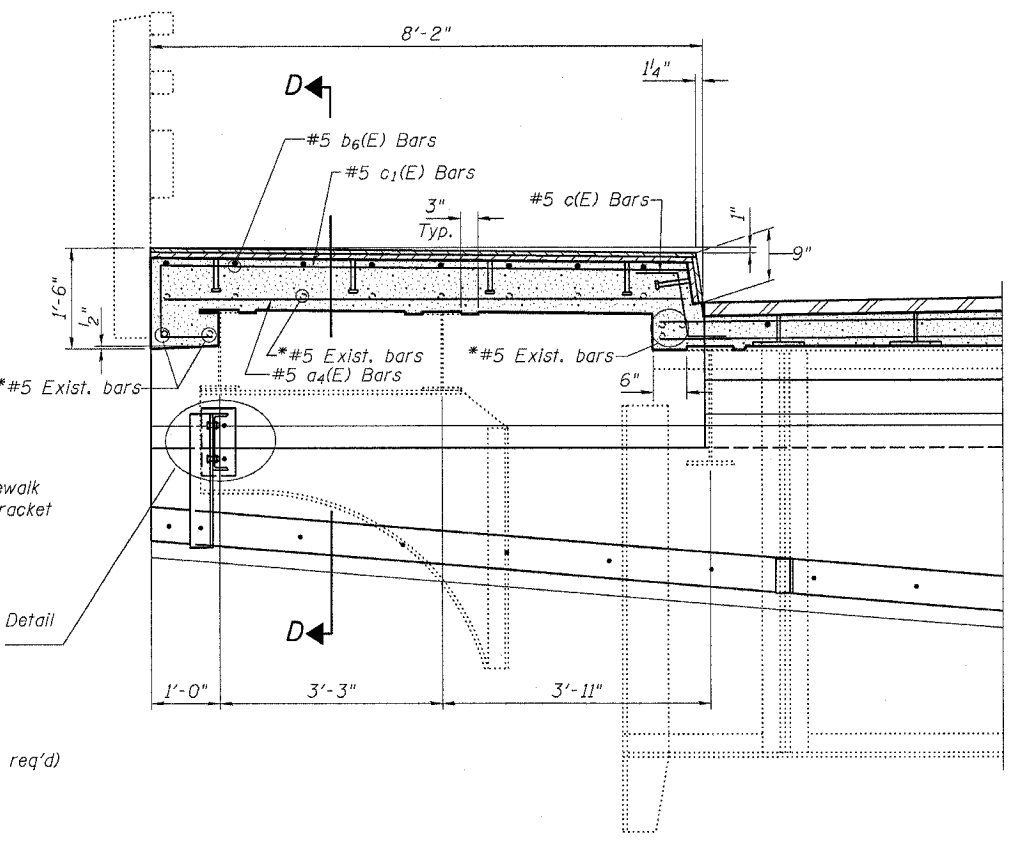


EXISTING SECTION B-B

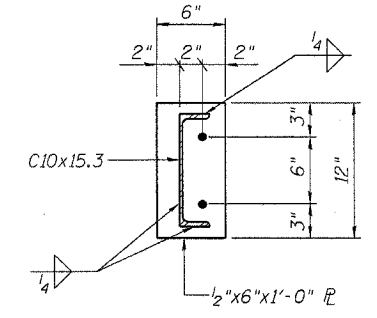
Cross hatched area indicates concrete removal.



SECTION D-D



SECTION THRU SIDEWALK



BRACKET DETAIL

*Existing reinforcement extending into the removal area shall be cleaned, straightened, cut to fit, and incorporated into the new construction. Any reinforcement bars that are damaged during concrete removal shall be replaced with an approved bar splicer or anchorage system. Cost shall be included with "Concrete Removal".

*3/4 inch x 6 inch Granular or Solid Flux Filled Headed Studs conforming to Art. 1006.32 of the Standard Spec's (40 req'd)

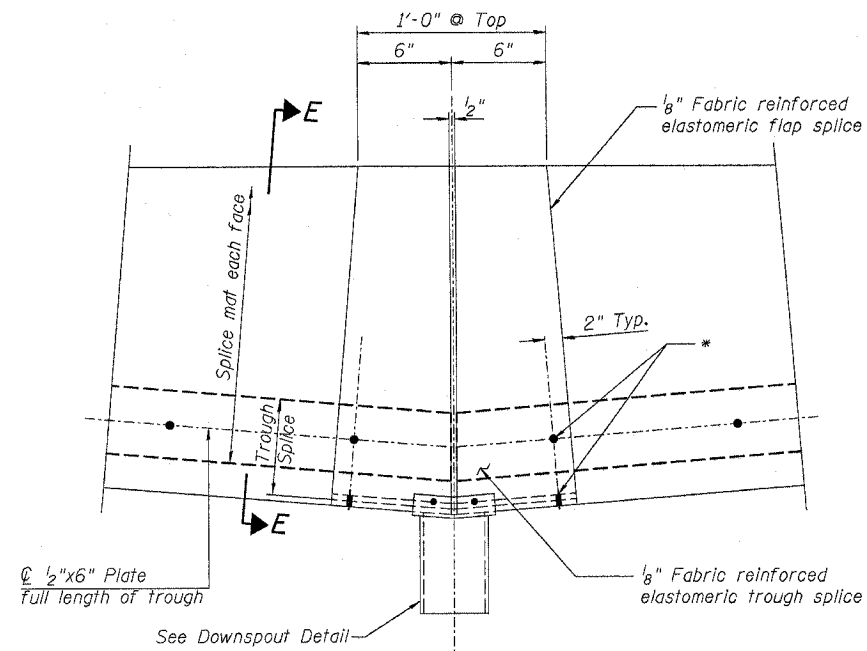
TROUGH DETAILS
F.A. RT. 599 (US 67 OVER ROCK RIVER SOUTH CHANNEL AND ILLINOIS AND MISSISSIPPI CANAL) ROCK ISLAND COUNTY STATION 50+23.00 STRUCTURE NO. 081-0040

CHAMPAIGN, ILLINOIS
CHICAGO, ILLINOIS
EVANSVILLE, INDIANA
INDIANAPOLIS, INDIANA
KENDSHA, WISCONSIN
SPRING GREEN, WISCONSIN



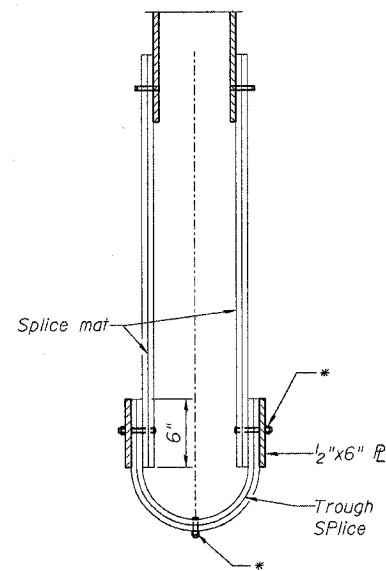
REVISIONS		NOTE: DIMENSIONAL DATA IS NOT TO BE OBTAINED BY MEASURING ANY PORTION OF THIS DRAWING.	DRAWING NUMBER
NAME	DATE		
		DESIGNED BY: M.M.	102303
		DRAWN BY: M.E.W.	
		CHECKED BY: M.M.	
		DATE: 1/26	
		APPROVED BY: M.M.	
		ACTIVITY INITIALS	

Contract #64C01

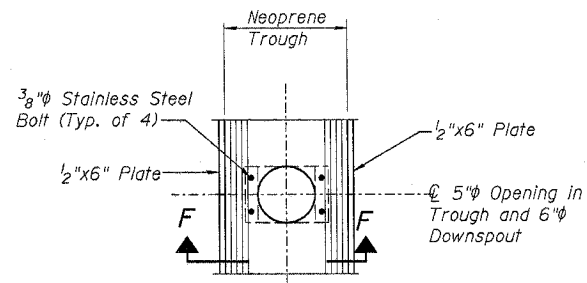


TROUGH SPLICE DETAIL

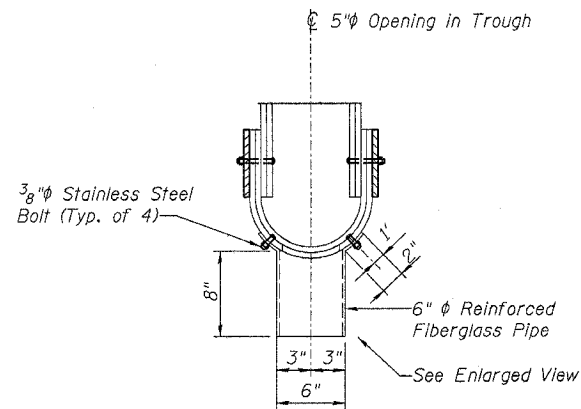
* $\frac{3}{8}$ " ϕ Stainless Steel bolts w/washers & nuts. Provide brass grommet in trough.



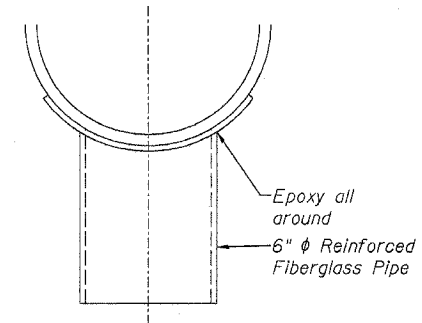
SECTION E-E



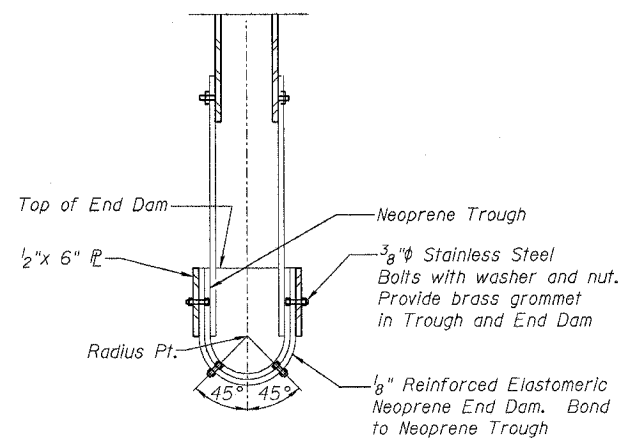
DOWNSPOUT DETAIL



SECTION F-F



ENLARGED VIEW



END DAM SECTION
(Ea. end of trough)

TROUGH DETAILS

F.A. RT. 599 (US 67 OVER
ROCK RIVER SOUTH CHANNEL
AND ILLINOIS AND MISSISSIPPI CANAL)
ROCK ISLAND COUNTY
STATION 50+23.00
STRUCTURE NO. 081-0040

Clark Dietz

CHAMPAIGN, ILLINOIS
CHICAGO, ILLINOIS
EVANSVILLE, INDIANA
INDIANAPOLIS, INDIANA
KENOSHA, WISCONSIN
SPRING GREEN, WISCONSIN

REVISIONS		DRAWING NUMBER
NAME	DATE	
		S-6

DESIGNED BY: M.M.	PROJECT NO: 102303
DRAWN BY: M.E.W.	DATE: 1/06
CHECKED BY: M.M.	
APPROVED BY: M.M.	
ACTIVITY	INITIALS