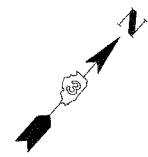


F.A.S. RTE.	SECTION	COUNTY	TOTAL SHEETS	SHEET NO.
1517	2/RS-3 (3/RS-4)	MCLEAN	223	65
STA.	TO STA.			
FED. ROAD DIST. NO. - ILLINOIS FED. AID PROJECT				

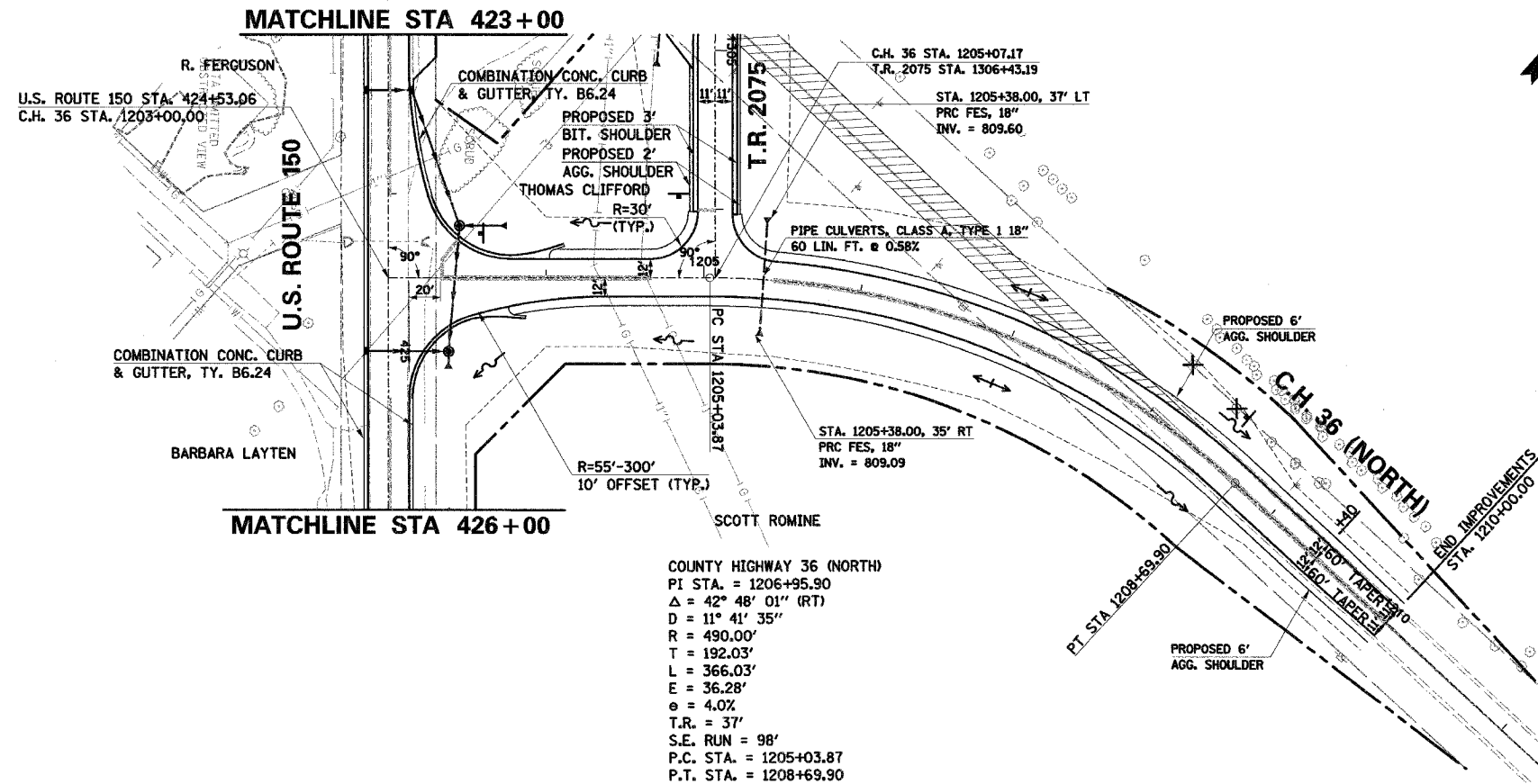
66383



DATE	BY

DATE	BY

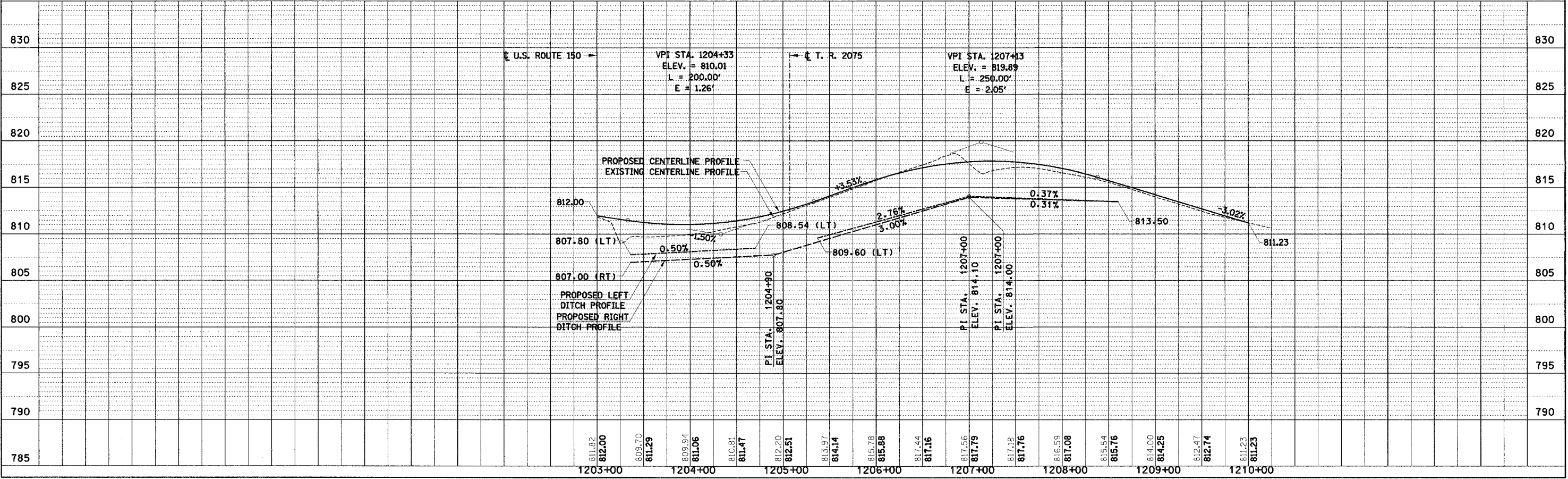
COMPANY NAME: #COMPANY/NAME#
 PROJECT CONTACT: #PROJECT/CONTACT#
 CLIENT: #CLIENT#
 DATE: #DATE#
 SHEET: #SHEET#



COUNTY HIGHWAY 36 (NORTH)
 PI STA. = 1206+95.90
 $\Delta = 42^\circ 48' 01''$ (RT)
 D = $11^\circ 41' 35''$
 R = 490.00'
 T = 192.03'
 L = 366.03'
 E = 36.28'
 $e = 4.0\%$
 T.R. = 37'
 S.E. RUN = 98'
 P.C. STA. = 1205+03.87
 P.T. STA. = 1208+69.90

LEGEND

	EXISTING R.O.W.
	PROPOSED R.O.W.
	TEMPORARY EASEMENT
	FLOW ARROW
	CONSTRUCTION LIMITS
	PAVEMENT REMOVAL
	TREE REMOVAL



C.H. 36 (NORTH) STA. 1203+00 TO STA. 1210+00 - PLAN AND PROFILE