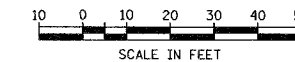


F.A.S. RTE.	SECTION	COUNTY	TOTAL SHEETS	SHEET NO.
1517 (2)RS-3 (3)RS-4	MCLEAN	223	92	
STA.	TO STA.			
FED. ROAD DIST. NO. - ILLINOIS FED. AID PROJECT				

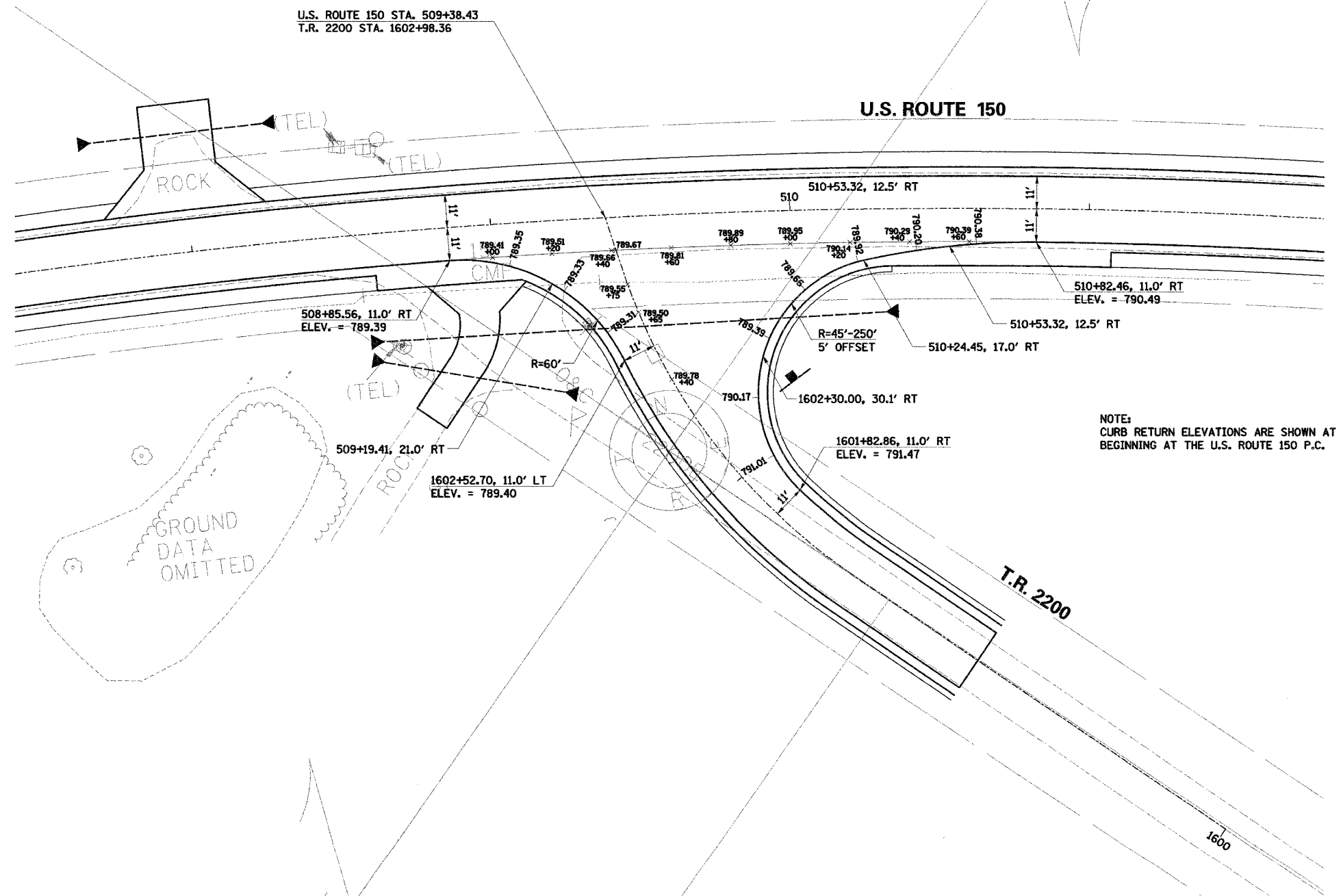
66383



PLAN	BY	DATE
SURVEYED		
ALIGNED		
CHECKED		
BY		
NO.		

PROFILE	BY	DATE
SURVEYED		
GRADES CHECKED		
BY		
NO.		

COMPANY NAME: #COMPANY NAME#  
 PROJECT CONTACT: #PROJECT CONTACT#  
 CLIENT: #CLIENT#  
 DATE: #DATE#  
 \$FILES



NOTE:  
CURB RETURN ELEVATIONS ARE SHOWN AT 20' INCREMENTS  
BEGINNING AT THE U.S. ROUTE 150 P.C.

ILLINOIS DEPARTMENT OF TRANSPORTATION  
 F.A.S. 1517 (U.S. ROUTE 150)  
 PAVEMENT ELEVATION PLAN  
 T.R. 2200

SCALE: VERT. \_\_\_\_\_  
 HORIZ. \_\_\_\_\_  
 DATE \_\_\_\_\_

DRAWN BY \_\_\_\_\_  
 CHECKED BY \_\_\_\_\_