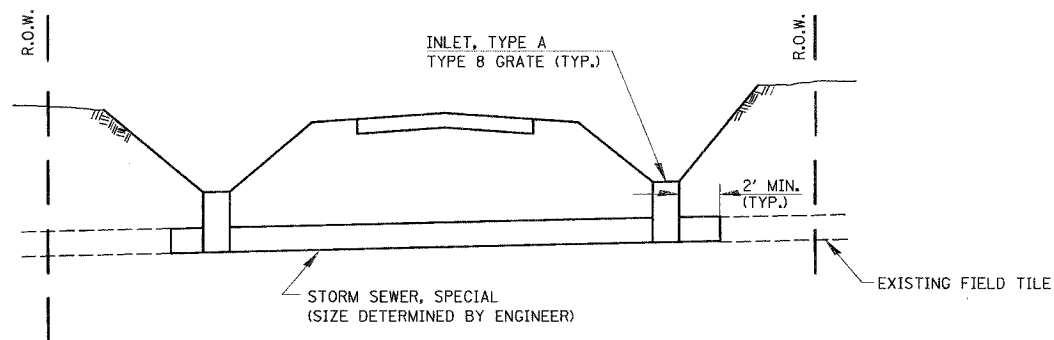


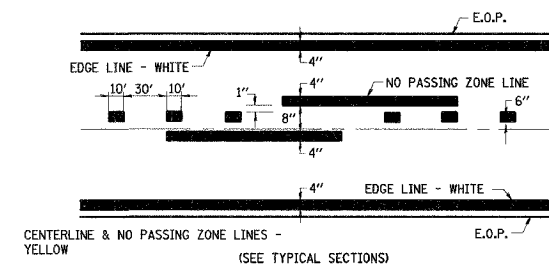
| | | | | |
|----------------------|---------------------------|--------|--------------|-----------|
| F.A.S. SHEETS | SECTION | COUNTY | TOTAL SHEETS | SHEET NO. |
| 1517 (2)RS-3 (3)RS-4 | | MCLEAN | 223 | 107 |
| STA. | TO STA. | | | |
| FED. ROAD DIST. NO. | ILLINOIS FED. AID PROJECT | | | |

66383

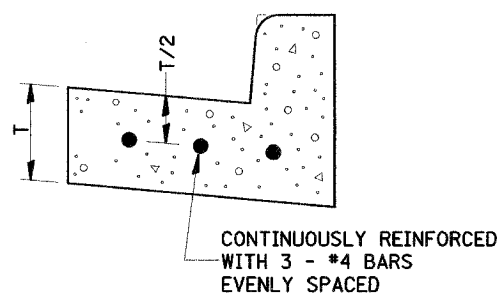


- NOTES:
1. EXACT LOCATION FOR FIELD TILE REPLACEMENT TO BE DETERMINED BY THE ENGINEER.
 2. EXISTING CATCH BASINS SHALL BE REMOVED.
 3. REMOVAL OF EXISTING FIELD TILE SHALL BE INCLUDED IN THE CONTRACT UNIT PRICE FOR STORM SEWER SPECIAL.

FIELD TILE REPLACEMENT (STA. 613 + 34)

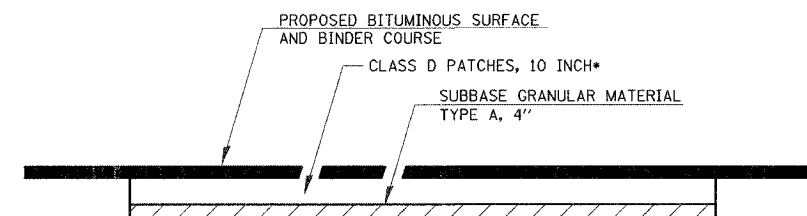


PAVEMENT MARKING



REINFORCEMENT SHALL NOT BE PAID FOR SEPARATELY BUT WILL BE INCLUDED IN THE CONTRACT UNIT PRICE FOR CC&G.

**REINFORCEMENT DETAIL
FOR
COMBINATION CONCRETE
CURB AND GUTTER
TYPE B-6.24**



• SEE PATCHING SCHEDULE FOR LOCATIONS AND QUANTITIES.

NOTE:
AT CULVERT AND STORM SEWER LOCATIONS, THE PATCH SHALL EXTEND 5' BEYOND THE EDGE OF THE TRENCH ON EACH SIDE.

PAVEMENT PATCHING DETAIL

ILLINOIS DEPARTMENT OF TRANSPORTATION
F.A.S. 1517 (U.S. ROUTE 150)
MISCELLANEOUS DETAILS

SCALE: VERT.
HORIZ.
DATE

DRAWN BY
CHECKED BY

| | | | | |
|------|-----------|----------|---------|---------|
| DATE | BY | SURVEYED | ALIGNED | CHECKED |
| | | | | |
| PLAN | NOTE BOOK | NO. | NO. | NO. |

| | | | | |
|---------|-----------|----------|----------------|-------|
| DATE | BY | SURVEYED | GRADES CHECKED | NOTED |
| | | | | |
| PROFILE | NOTE BOOK | NO. | NO. | NO. |

COMPANY NAME: #COMPANY NAME#
PROJECT CONTACT: #PROJECT CONTACT#
CLIENT: #CLIENT#
DATE: #DATE#
SCALE: #SCALE#