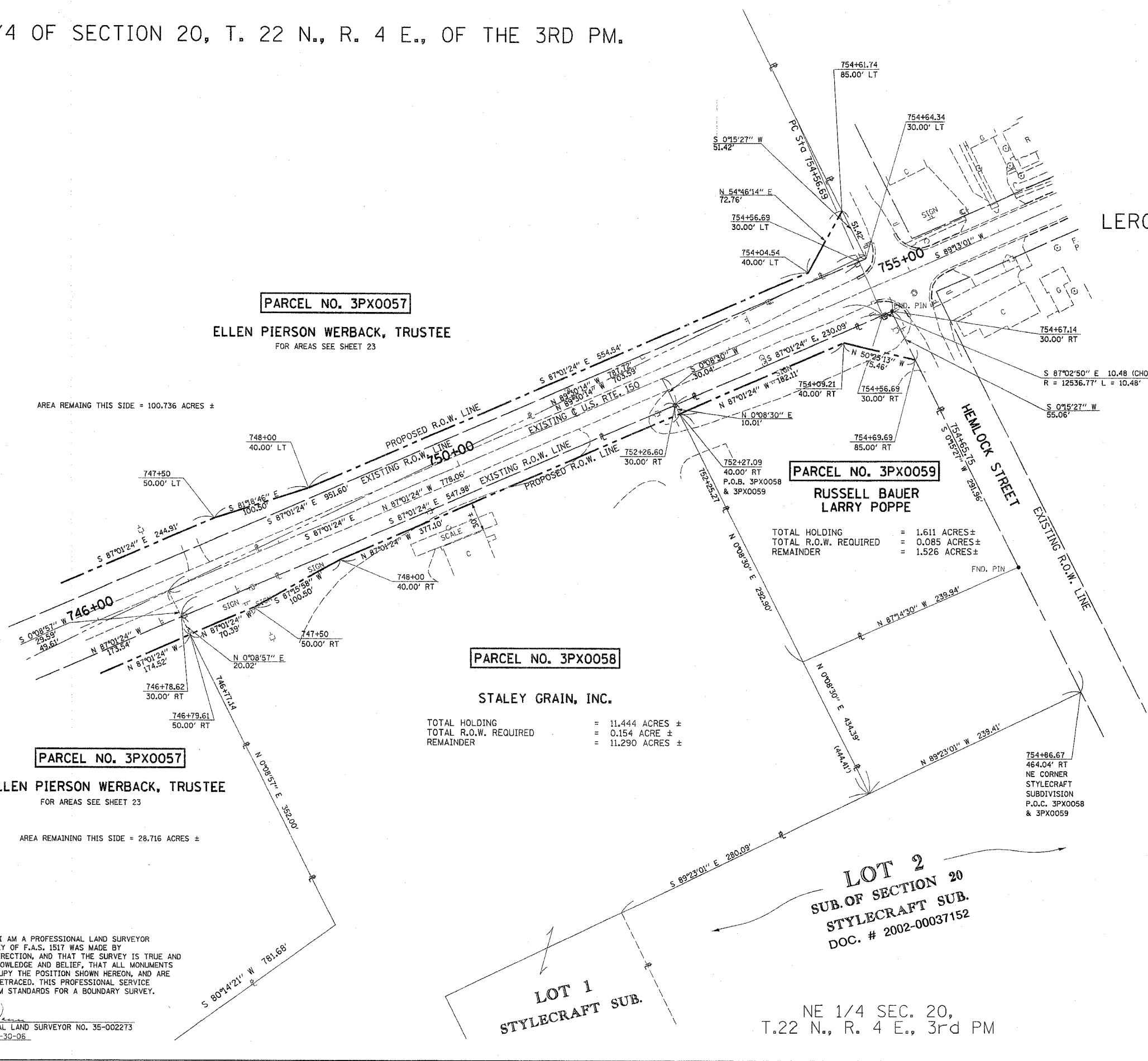
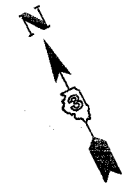


NE. 1/4 OF SECTION 20, T. 22 N., R. 4 E., OF THE 3RD PM.



PARCEL NO. 3PX0057

ELLEN PIERSON WERBACK, TRUSTEE
FOR AREAS SEE SHEET 23

AREA REMAINING THIS SIDE = 100.736 ACRES ±

PARCEL NO. 3PX0059

RUSSELL BAUER
LARRY POPPE

TOTAL HOLDING = 1.611 ACRES ±
TOTAL R.O.W. REQUIRED = 0.085 ACRES ±
REMAINDER = 1.526 ACRES ±

PARCEL NO. 3PX0058

STALEY GRAIN, INC.

TOTAL HOLDING = 11.444 ACRES ±
TOTAL R.O.W. REQUIRED = 0.154 ACRE ±
REMAINDER = 11.290 ACRES ±

PARCEL NO. 3PX0057

ELLEN PIERSON WERBACK, TRUSTEE
FOR AREAS SEE SHEET 23

AREA REMAINING THIS SIDE = 28.716 ACRES ±



I, THOMAS M. DRONE, HEREBY CERTIFY THAT I AM A PROFESSIONAL LAND SURVEYOR OF THE STATE OF ILLINOIS, THAT THE SURVEY OF F.A.S. 1517 WAS MADE BY HURST-ROSCHKE ENGINEERS, INC., UNDER MY DIRECTION, AND THAT THE SURVEY IS TRUE AND COMPLETE AS SHOWN TO THE BEST OF MY KNOWLEDGE AND BELIEF, THAT ALL MONUMENTS AND MARKS ARE OF THE CHARACTER AND OCCUPY THE POSITION SHOWN HEREON, AND ARE SUFFICIENT TO ENABLE THE SURVEY TO BE RETRACED. THIS PROFESSIONAL SERVICE CONFORMS TO THE CURRENT ILLINOIS MINIMUM STANDARDS FOR A BOUNDARY SURVEY.

8-25-25
DATE

THOMAS M. DRONE
ILLINOIS PROFESSIONAL LAND SURVEYOR NO. 35-002273
LICENSE EXPIRES 11-30-06

LOT 1
STYLECRAFT SUB.

LOT 2
SUB. OF SECTION 20
STYLECRAFT SUB.
DOC. # 2002-00037152

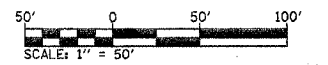
NE 1/4 SEC. 20,
T.22 N., R. 4 E., 3rd PM

LERROY

CURVE C15
PI Sta. 758+67.18
A = 37° 45' 35" (LT)
R = 0° 27' 28"
T = 410.50'
M = 12.566.77'
P = 820.70'
PC Sta. 754+56.69
PT Sta. 754+56.69
D = 314.762+77.39

NOTES:

- 1. COORDINATES AND BEARINGS ARE REFERENCED TO THE ILLINOIS STATE PLANE COORDINATE SYSTEM, EAST ZONE (NAD 83).
- 2. MEASUREMENTS SHOWN ARE GRID DISTANCE
- 3. GRID FACTOR = 0.99996777



RIGHT OF WAY PLANS

ROUTE	F.A.S. 1517 (US 150)
SECTION	(2) RS-3, (3) RS-4
PROJECT	
COUNTY	MCLLEAN
JOB NUMBER	R-93-022-00
STATION	746+00 TO 756+00
SCALE	1" = 50' SHEET 25 OF 25