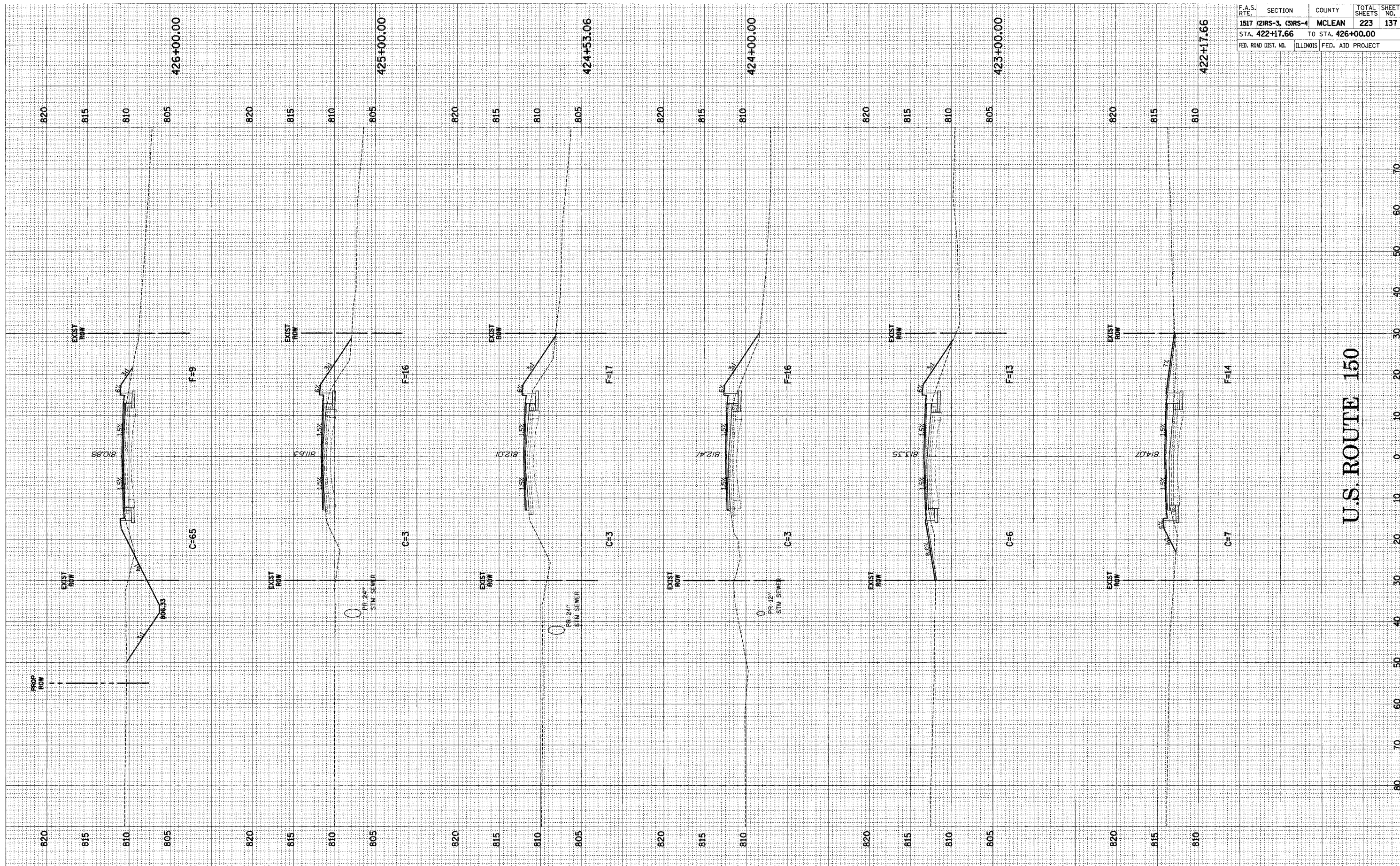


FINAL SURVEY	BY	DATE
SURVEYED		
NOTE BOOK		
AREAS CHECKED		
NO.		

ORIGINAL SURVEY	BY	DATE
SURVEYED		
NOTE BOOK		
AREAS CHECKED		
NO.		



F.A.S. RTE.	SECTION	COUNTY	TOTAL SHEETS	SHEET NO.
1517	(2)RS-3, (3)RS-4	MCLEAN	223	137
STA. 422+17.66	TO STA. 426+00.00			
FED. ROAD DIST. NO.	ILLINOIS	FED. AID PROJECT		

U.S. ROUTE 150

U.S. ROUTE 150 CROSS-SECTIONS STA. 422+17.66 TO STA. 426+00.00