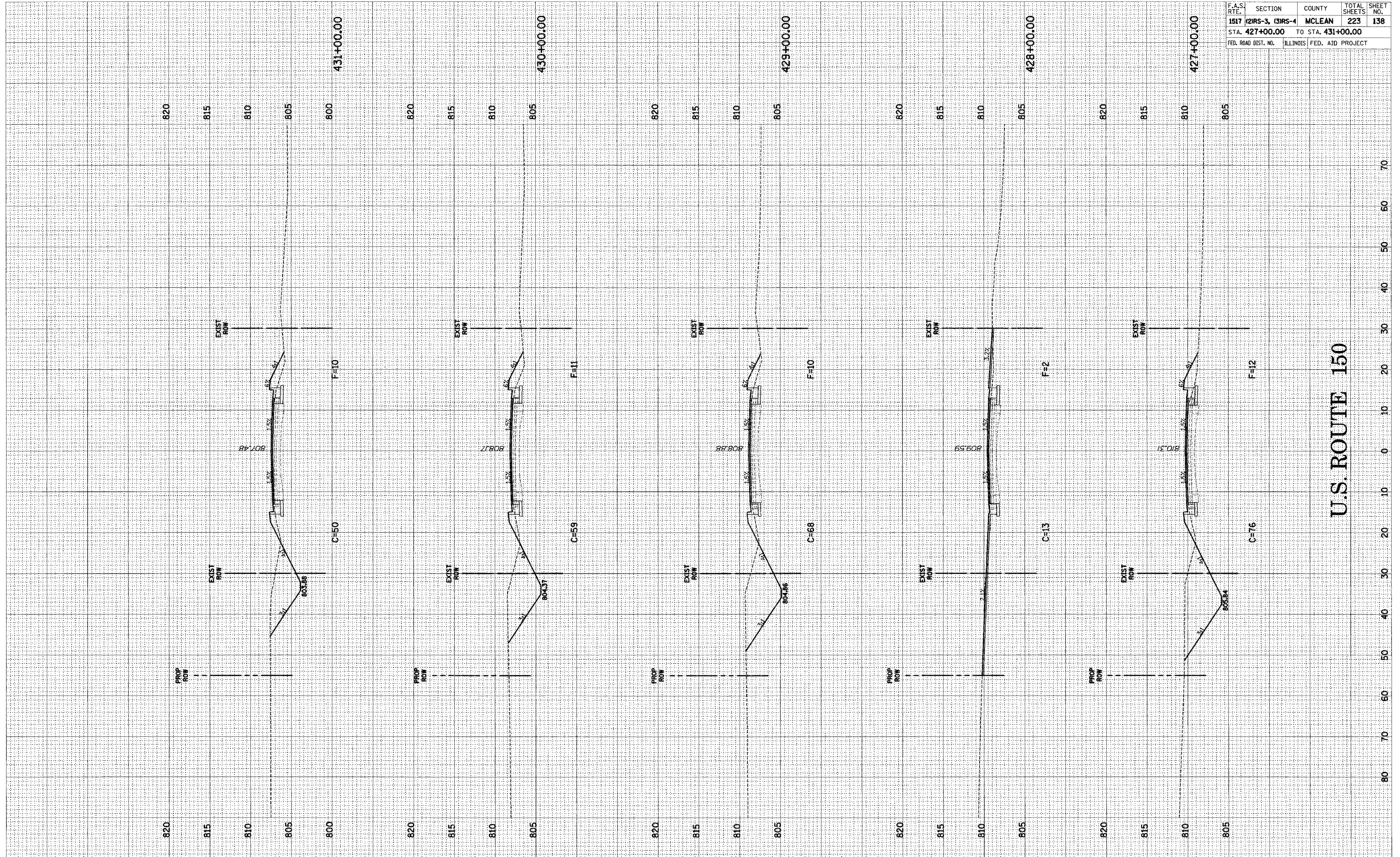


FINAL SURVEY BY DATE
 SURVEYED BY
 NOTE BOOK NO.
 TEMPLATE NO.
 AREAS CHECKED

ORIGINAL SURVEY BY DATE
 SURVEYED BY
 NOTE BOOK NO.
 TEMPLATE NO.
 AREAS CHECKED

F.A.S. RTE.	SECTION	COUNTY	TOTAL SHEETS	SHEET NO.
1517	(2)RS-3, (3)RS-4	MCLEAN	223	138
STA. 427+00.00		TO STA. 431+00.00		
FED. ROAD DIST. NO.	ILLINOIS	FED. AID PROJECT		



U.S. ROUTE 150

U.S. ROUTE 150 CROSS-SECTIONS STA. 427+00.00 TO STA. 431+00.00