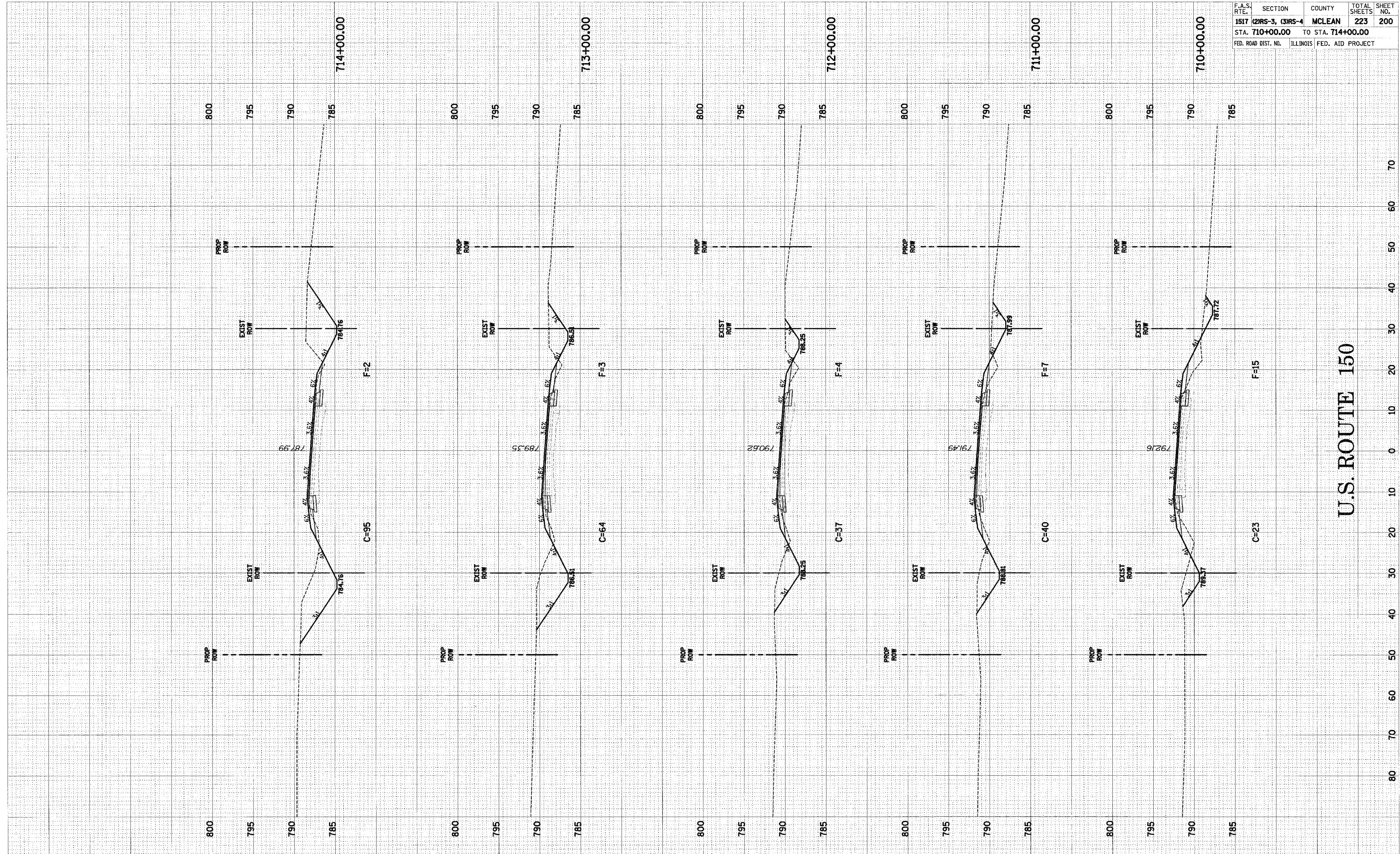


DATE	BY
SURVEYED	BY
NOTE BOOK	NO.
TEMP. AREAS	AREAS CHECKED

DATE	BY
SURVEYED	BY
NOTE BOOK	NO.
TEMP. AREAS	AREAS CHECKED

F.A.S. RTE.	SECTION	COUNTY	TOTAL SHEETS	SHEET NO.
1517	(2)RS-3, (3)RS-4	MCLEAN	223	200
STA. 710+00.00		TO STA. 714+00.00		
FED. ROAD DIST. NO.	ILLINOIS	FED. AID PROJECT		



U.S. ROUTE 150

U.S. ROUTE 150 CROSS-SECTIONS STA. 710+00.00 TO STA. 714+00.00