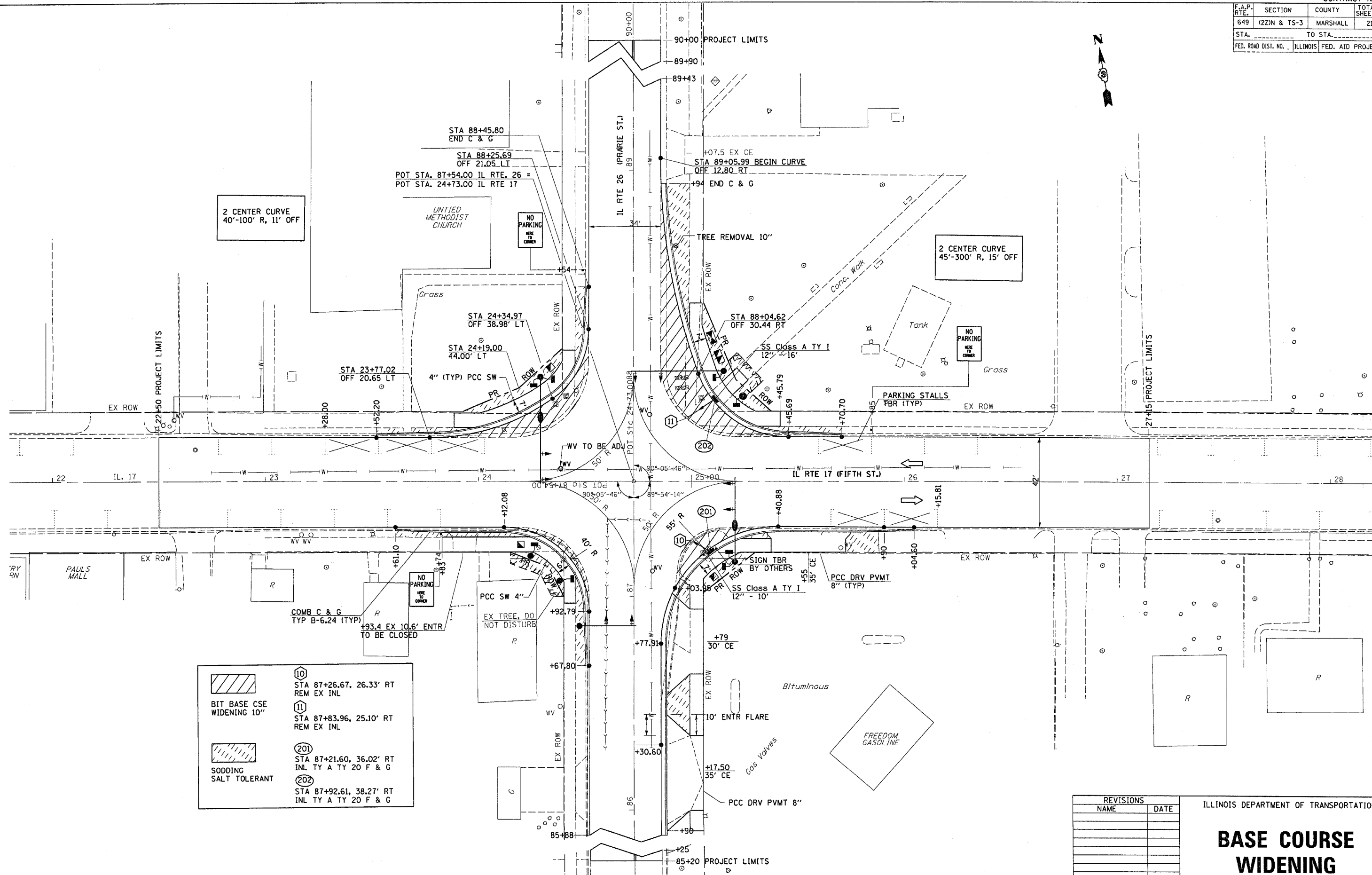


F.A.P. RTE.	SECTION	COUNTY	TOTAL SHEETS	SHEET NO.
649	(22N & TS-3)	MARSHALL	21	8
STA. _____ TO STA. _____		FED. ROAD DIST. NO. _____ ILLINOIS FED. AID PROJECT		



	10	STA 87+26.67, 26.33' RT REM EX INL
BIT BASE CSE WIDENING 10"	11	STA 87+83.96, 25.10' RT REM EX INL
	201	STA 87+21.60, 36.02' RT INL TY A TY 20 F & G
SODDING SALT TOLERANT	202	STA 87+92.61, 38.27' RT INL TY A TY 20 F & G

REVISIONS	
NAME	DATE

ILLINOIS DEPARTMENT OF TRANSPORTATION

BASE COURSE WIDENING