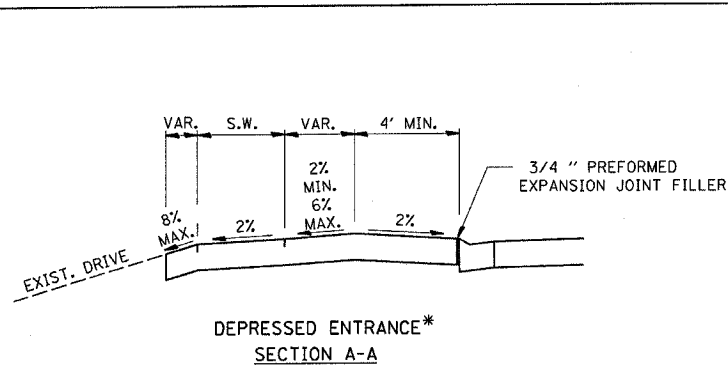
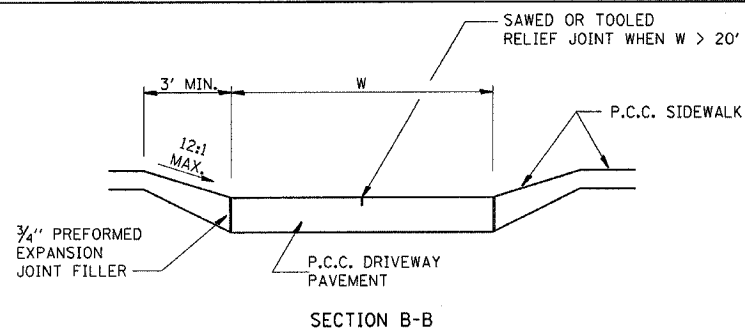


F.A.P. RTE.	SECTION	COUNTY	TOTAL SHEETS	SHEET NO.
649	(22N & TS-3)	MARSHALL	21	15
STA.	TO STA.			
FED. ROAD DIST. NO. ILLINOIS FED. AID PROJECT				

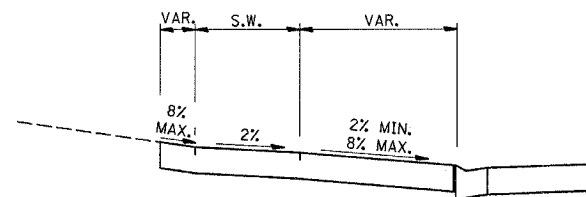


DEPRESSED ENTRANCE*
SECTION A-A

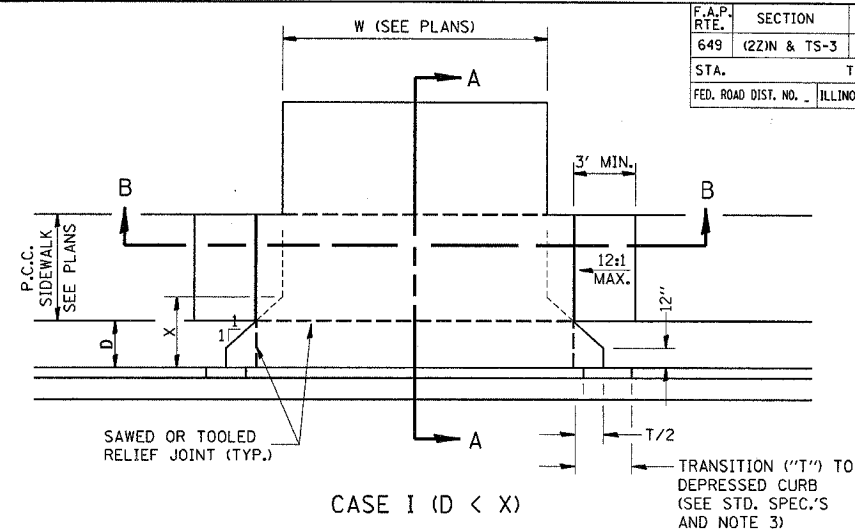
*(SEE X-SECTIONS FOR ENTRANCE PROFILE.)



SECTION B-B



ELEVATED ENTRANCE*
SECTION A-A

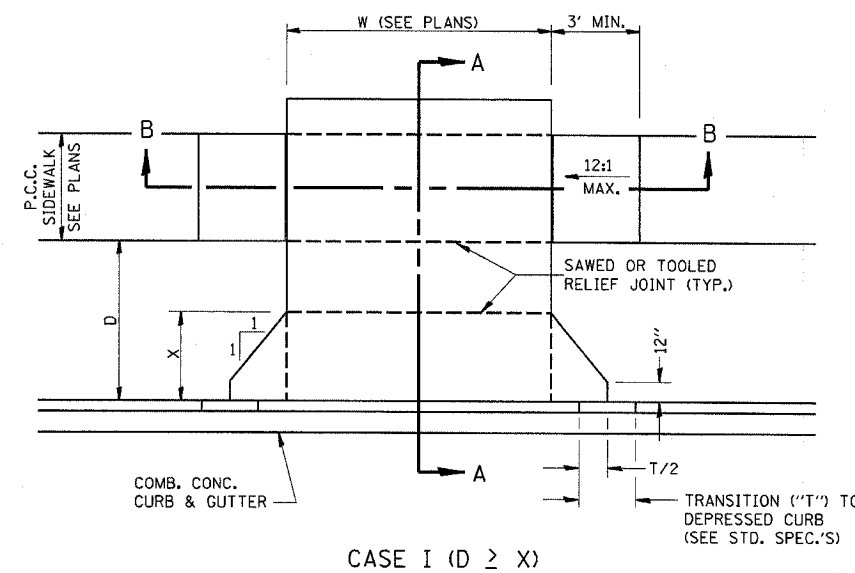
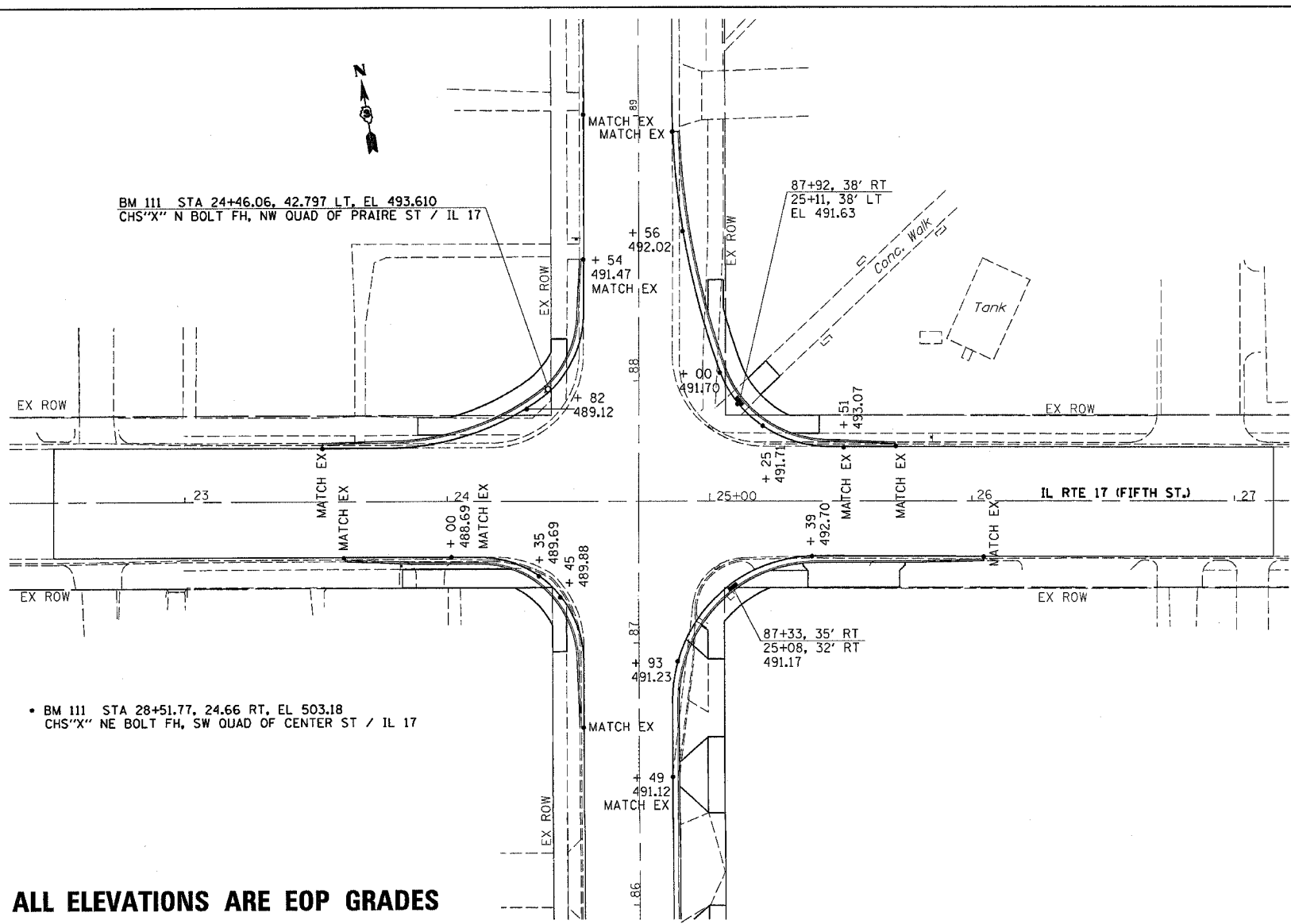


CASE I (D < X)

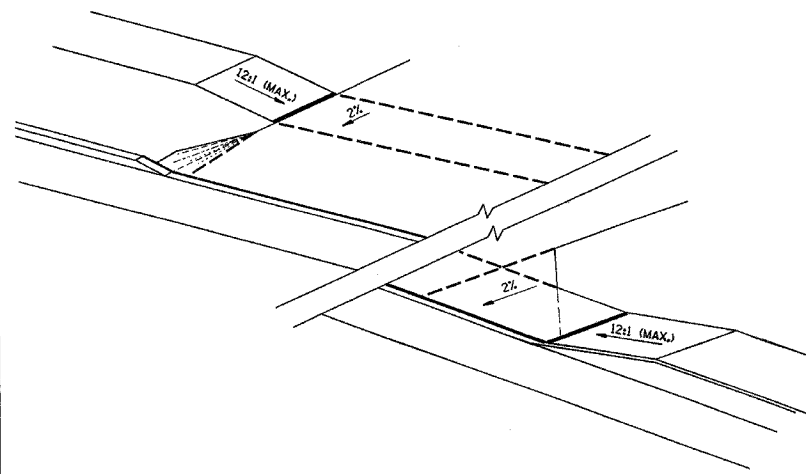
GENERAL NOTES:

1. X = 7' (NON-COMMERCIAL) X = 15' (COMMERCIAL)
2. COST OF EXPANSION JOINTS AND RELIEF JOINTS SHALL BE INCLUDED IN THE COST OF THE P.C.C. DRIVEWAY PAVEMENT.
3. AS THE DIMENSION "D" APPROACHES ZERO, THE TRANSITION TO DEPRESSED CURB SHALL BE NO STEEPER THAN 12:1

PCC URBAN ENTRANCES



CASE I (D ≥ X)



PCC URBAN ENTRANCES DETAILS