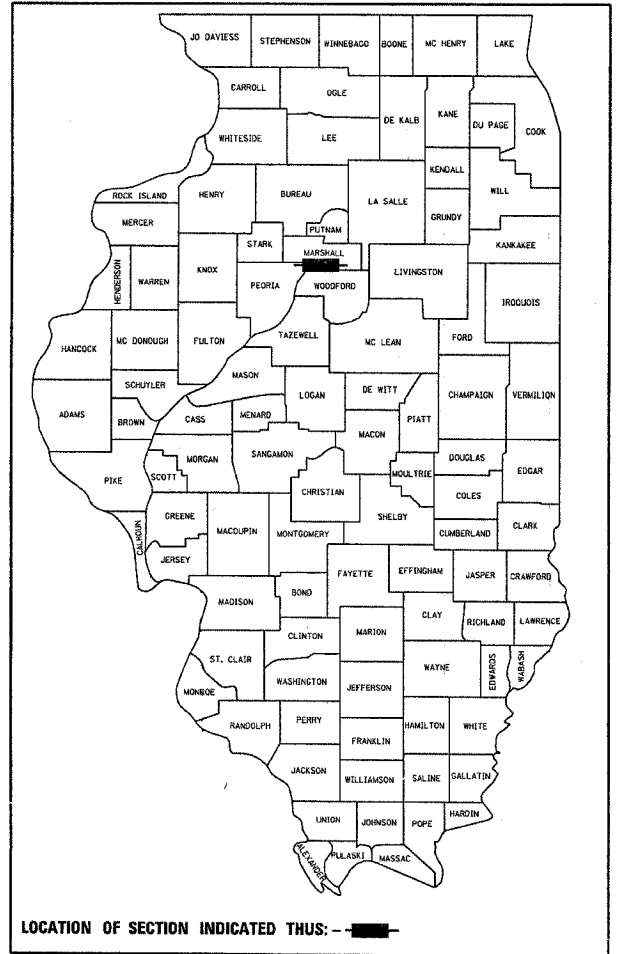


F.A.P. RTE.	SECTION	COUNTY	TOTAL SHEETS	SHEET NO.
649	(2Z)N&TS-3	MARSHALL	21	1
ILLINOIS PROJECT				
P-93-020-05				
D-93-012-06				

STATE OF ILLINOIS
DEPARTMENT OF TRANSPORTATION
DIVISION OF HIGHWAYS
**PROPOSED
HIGHWAY PLANS**

F.A.P. 649 IL ROUTE 17
SECTION (2Z)N&TS-3
PROJECT HS-0649 (014)
MARSHALL COUNTY

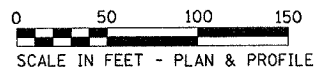


INDEX OF SHEETS

- 1 COVER SHEET
- 2 GENERAL NOTES
- 3-5 SUMMARY OF QUANTITIES
- 6 TYPICAL SECTION
- 7 SCHEDULES
- 8 BASE COURSE WIDENING
- 9 RIGHT OF WAY
- 10 PAVEMENT MARKING
- 11-14 TRAFFIC SIGNAL DETAILS
- 15-16 DETAILS
- 17 BORING LOGS
- 18-21 CROSS SECTIONS

HIGHWAY STANDARDS

- 000001-04 STANDARD SYMBOLS, ABBREVIATIONS AND PATTERNS
- 001001 AREAS OF REINFORCEMENT BARS
- 001006 DECIMAL OF AN INCH AND OF A FOOT
- 280001-02 TEMPORARY EROSION CONTROL SYSTEMS
- 424001-04 CURB RAMPS FOR SIDEWALK
- 602301-01 INLET, TYPE A
- 604071-02 FRAME AND GRATE, TYPE 20
- 606001-02 CONCRETE CURB TYPE B AND COMBINATION CONCRETE CURB AND GUTTER
- 701301-02 LANE CLOSURE, 2L, 2W, SHORT TIME OPERATIONS
- 701311-02 LANE CLOSURE, 2L, 2W, MOVING OPERATIONS - DAY ONLY
- 701501-03 URBAN LANE CLOSURE, 2L, 2W, UNDIVIDED
- 701801-03 LANE CLOSURE, MULTILANE 1W OR 2W CROSSWALK OR SIDEWALK CLOSURE
- 702001-06 TRAFFIC CONTROL DEVICES
- 720001 SIGN PANEL MOUNTING DETAILS
- 720006 SIGN PANEL ERECTION DETAILS
- 720011 METAL POSTS FOR SIGNS, MARKERS AND DELINEATORS
- 720016-01 MAST ARM MOUNTED STREET NAME SIGNS
- 720021-01 SIGN PANELS, EXTRUDED ALUMINUM TYPE
- 729001 APPLICATIONS OF TYPE A AND B METAL POSTS (FOR SIGNS & MARKERS)
- 780001-01 TYPICAL PAVEMENT MARKINGS
- 781001-02 TYPICAL APPLICATIONS RAISED REFLECTIVE PAVEMENT MARKERS
- 805001 ELECTRICAL SERVICE INSTALLATION DETAILS
- 814001 CONCRETE HANDHOLES
- 814006 DOUBLE HANDHOLES
- 857001 STANDARD PHASE DESIGNATION DIAGRAMS AND PHASE SEQUENCES
- 873001 TRAFFIC SIGNAL GROUNDING
- 877001-02 STEEL MAST ARM ASSEMBLY AND POLE
- 877011-02 STEEL COMBINATION MAST ARM ASSEMBLY AND POLE
- 878001-04 CONCRETE FOUNDATION DETAILS
- 880006 TRAFFIC SIGNAL MOUNTING DETAILS
- 886001 DETECTOR LOOP INSTALLATIONS
- 886006 TYPICAL LAYOUT FOR DETECTION LOOPS



FULL SIZE PLANS HAVE BEEN PREPARED USING STANDARD ENGINEERING SCALES, REDUCED SIZED PLANS WILL NOT CONFORM TO STANDARD SCALES. IN MAKING MEASUREMENTS ON REDUCED PLANS, THE ABOVE SCALES MAY BE USED.

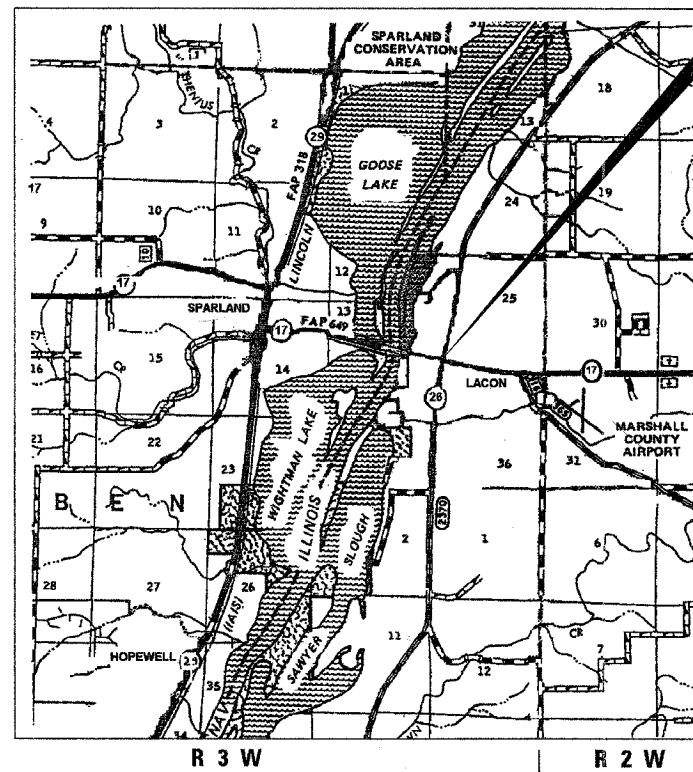
MICROFILMED _____
REEL NUMBER _____
AWARDED _____
RESIDENT ENGINEER _____
AS BUILT CHANGES WERE MADE
ON THE FOLLOWING SHEETS _____

JULIE 1-800-892-0123
DISTRICT 3 NO. (815) 434-6131

PROJECT ENGINEER: DAN DRAPER
UNIT CHIEF: PAT BRABOY
TOWNSHIP: STEUBEN

CONTRACT NO. 66611

C - 93 - 013 - 06
Spot improvement at the intersection of F.A.P. 649 (Illinois Route 26).



LOCATION MAP
NOT TO SCALE

GROSS LENGTH = 292 FT. = 0.055 MI.
NET LENGTH = 292 FT. = 0.055 MI.

Intersection of IL 17
& IL 26

RURAL MINOR ARTERIAL CLASSIFICATION

IL 17 East of IL 26 /2003 ADT = 7100

IL 17 East of IL 26 /2003 ADT = 8800

P.V. = 93.3 % S.U. = 3.1 % M.U. = 3.6 %

STATE OF ILLINOIS
DEPARTMENT OF TRANSPORTATION
DIVISION OF HIGHWAYS

SUBMITTED FEB 27 2006

Gregory P. Muntz
DEPUTY DIRECTOR OF HIGHWAYS, REGION ENGINEER

Mike Gene
ENGINEER OF DESIGN AND ENVIRONMENT

Michael J. Sosa, P.E.
DIRECTOR OF HIGHWAYS, CHIEF ENGINEER

PRINTED BY THE AUTHORITY
OF THE STATE OF ILLINOIS

F.A.P. RTE.	SECTION	COUNTY	TOTAL SHEETS	SHEET NO.
649	122IN&TS-3	MARSHALL	21	2
STA.		TO STA.		
FED. ROAD DIST. NO. -	ILLINOIS	FED. AID PROJECT		

GENERAL NOTES

THE THICKNESS OF BITUMINOUS MIXTURES SHOWN ON THE PLANS IS THE NOMINAL THICKNESS. DEVIATIONS FROM THE NOMINAL THICKNESS WILL BE PERMITTED WHEN SUCH DEVIATIONS OCCUR DUE TO IRREGULARITIES IN THE EXISTING SURFACE OR BASE ON WHICH THE BITUMINOUS MIXTURE IS PLACED.

AGGREGATE (PRIME COAT): FA 20 MAY BE USED IN ADDITION TO THE GRADATIONS LISTED IN THE 3RD PARAGRAPH OF ARTICLE 1003.03(c) OF THE STANDARD SPECIFICATIONS.

THE ENGINEER WILL BE THE SOLE JUDGE CONCERNING CURING TIME FOR THE VARIOUS BITUMINOUS LIFTS.

WHERE SECTION OR SUBSECTION MONUMENTS ARE ENCOUNTERED, THE ENGINEER SHALL BE NOTIFIED BEFORE SUCH MONUMENTS ARE REMOVED. THE CONTRACTOR SHALL PROTECT AND CAREFULLY PRESERVE ALL MONUMENTS UNTIL AN AUTHORIZED SURVEYOR OR AGENT HAS WITNESSED OR OTHERWISE REFERENCED THEIR LOCATION. THE CONTRACTOR SHALL BE RESPONSIBLE FOR HAVING AN AUTHORIZED SURVEYOR REESTABLISH ANY SECTION OR SUBSECTION MONUMENTS DESTROYED BY HIS OPERATIONS.

SEEDING SHALL NOT BE PERMITTED AT ANY TIME WHEN THE GROUND IS FROZEN, WET, OR IN AN UNTILLABLE CONDITION. LOCATIONS TO BE SEEDED WILL BE DETERMINED BY THE ENGINEER.

INTERPRETED TO MEAN THE EDITION AS INDICATED BY THE SUBNUMBER LISTED ON THE INDEX OF SHEETS OR THE COPY OF THE STANDARD INCLUDED IN THESE PLANS.

THE FOLLOWING RATES OF APPLICATION HAVE BEEN USED IN CALCULATING PLAN QUANTITIES:

GRANULAR MATERIALS	2.05	TONS / CU YD
BITUMINOUS MAT PRIME COAT	0.08	GAL / SQ YD OR
	0.375	GAL / SQ YD
AGGREGATE PRIME COAT	0.002	TONS / SQ YD
BITUMINOUS RESURFACING	112	LBS / SQ YD / IN
SHORT TERM PAVEMENT MARKING	10	FT /100 FT OF APPLICATION
SUPPLEMENTAL WATERING	3	GAL/SQ YD/ APPLICATION
LEVEL BINDER (HAND METHOD)	0.0005	TONS / SQ YD

ALL DAMAGE TO DEPARTMENT OWNED UNDERGROUND FACILITIES, CAUSED BY THE CONTRACTOR SHALL BE REPAIRED TO THE SATISFACTION OF THE DEPARTMENT AT THE CONTRACTOR'S EXPENSE. THIS SHALL INCLUDE ALL TEMPORARY REPAIRS REQUIRED TO KEEP THE FACILITY OPERATIONAL WHILE MATERIAL IS BEING OBTAINED TO MAKE PERMANENT REPAIRS. SPLICING OF ELECTRIC CABLE SHALL NOT BE ALLOWED. ELECTRIC CABLE SHALL BE REPLACED FROM POLE TO POLE OR CONTROLLER.

THE COST OF MAKING ANY SEWER CONNECTIONS TO AN EXISTING DRAINAGE STRUCTURE OR PIPE SHALL BE INCLUDED IN THE COST OF THE NEW SEWER.

MEMBERS OF JULIE KNOWN TO BE WITHIN THE LIMITS OF THE IMPROVEMENT ARE:
CITY OF LACON
GALLITAN RIVER COMMUNICATIONS

COMMITMENTS
1.ENVIRONMENTAL COORDINATION
2.CITY-STATE AGREEMENT
3.CITY-STATE MEETING MINUTES

STATE OF ILLINOIS
DEPARTMENT OF TRANSPORTATION
DISTRICT THREE

PREPARED BY: Rich Powell
DISTRICT STUDIES & PLANS ENGINEER

DATE: 2-27-06

EXAMINED BY: Robert J. [Signature]
DISTRICT CONSTRUCTION ENGINEER

Keneth R. [Signature]
DISTRICT MATERIALS ENGINEER

Bruce A. [Signature]
DISTRICT OPERATIONS ENGINEER

REVISIONS	
NAME	DATE

ILLINOIS DEPARTMENT OF TRANSPORTATION
GENERAL NOTES

F.A.P. RTE.	SECTION	COUNTY	TOTAL SHEETS	SHEET NO.
649	(22)N & TS-3	MARSHALL	21	3
STA.		TO STA.		
FED. ROAD DIST. NO.		ILLINOIS FED. AID PROJECT		

SUMMARY OF QUANTITIES

CODE NO.	CONSTRUCTION CODE TYPE: ITEM	UNIT	TOTAL QUANTITY	I000-1A	Y030-1E	Y031-1F
				ROADWAY 90% FED 10% STATE	LIGHTING 100% CITY	TRAFFIC SIGNALS 90% FED 10% STATE
20100110	TREE REMOVAL (6 TO 15 UNITS DIAMETER)	UNIT	10	10		
20200100	EARTH EXCAVATION	CU YD	64	64		
20800150	TRENCH BACKFILL	CU YD	4	4		
25000400	NITROGEN FERTILIZER NUTRIENT	POUND	4	4		
25000500	PHOSPHORUS FERTILIZER NUTRIENT	POUND	4	4		
25000600	POTASSIUM FERTILIZER NUTRIENT	POUND	4	4		
25200110	SODDING, SALT TOLERANT	SQ YD	329	329		
25200200	SUPPLEMENTAL WATERING	UNIT	5	5		
28000250	TEMPORARY EROSION CONTROL SEEDING	POUND	18	18		
40600100	BITUMINOUS MATERIALS (PRIME COAT)	GALLON	328	328		
40600300	AGGREGATE (PRIME COAT)	TON	9	9		
40600990	TEMPORARY RAMP	SQ YD	70	70		
42300400	PORTLAND CEMENT CONCRETE DRIVEWAY PAVEMENT, 8 INCH	SQ YD	180	180		
42400100	PORTLAND CEMENT CONCRETE SIDEWALK 4 INCH	SQ FT	2062	2062		
42400800	DETECTABLE WARNINGS	SQ FT	80	80		
44000200	DRIVEWAY PAVEMENT REMOVAL	SQ YD	192	192		
44000500	COMBINATION CURB AND GUTTER REMOVAL	FOOT	728	728		
44000600	SIDEWALK REMOVAL	SQ FT	2348	2348		
44000008	BITUMINOUS SURFACE REMOVAL 2 1/2"	SQ YD	4099	4099		
550A0050	STORM SEWERS, CLASS A, TYPE 1 12"	FOOT	26	26		
56109210	WATER VALVES TO BE ADJUSTED	EACH	1	1		
60237420	INLETS, TYPE A, TYPE 20 FRAME AND GRATE	EACH	2	2		
60500060	REMOVING INLETS	EACH	2	2		
60605000	COMBINATION CONCRETE CURB AND GUTTER, TYPE B-6.24	FOOT	698	698		
67000400	ENGINEER'S FIELD OFFICE, TYPE A	CAL MO	3	3		
67100100	MOBILIZATION	L SUM	1	1		
70102620	TRAFFIC CONTROL AND PROTECTION, STANDARD 701501	L SUM	1	1		
70102640	TRAFFIC CONTROL AND PROTECTION, STANDARD 701801	L SUM	1	1		
70103815	TRAFFIC CONTROL SURVEILLANCE	CAL DAY	10	10		
70300100	SHORT TERM PAVEMENT MARKING	FOOT	315	315		
70300220	TEMPORARY PAVEMENT MARKING - LINE 4"	FOOT	1730	1730		
70300240	TEMPORARY PAVEMENT MARKING - LINE 6"	FOOT	474	474		
70300260	TEMPORARY PAVEMENT MARKING - LINE 12"	FOOT	876	876		
70300280	TEMPORARY PAVEMENT MARKING - LINE 24"	FOOT	91	91		
70301000	WORK ZONE PAVEMENT MARKING REMOVAL	SQ FT	36	36		
72000100	SIGN PANEL - TYPE 1	SQ FT	4.5	4.5		
72000200	SIGN PANEL - TYPE 2	SQ FT	40			40
72900100	METAL POST - TYPE A	FOOT	37.5	37.5		
78000200	THERMOPLASTIC PAVEMENT MARKING - LINE 4"	FOOT	1730	1730		
78000400	THERMOPLASTIC PAVEMENT MARKING - LINE 6"	FOOT	474	474		
78000600	THERMOPLASTIC PAVEMENT MARKING - LINE 12"	FOOT	876	876		

*SPECIALTY ITEMS

REVISIONS	
NAME	DATE

ILLINOIS DEPARTMENT OF TRANSPORTATION

SUMMARY OF QUANTITIES

SCALE: VERT.
HORIZ.
DATE

DRAWN BY
CHECKED BY

F.A.P. RTE.	SECTION	COUNTY	TOTAL SHEETS	SHEET NO.
649	(22N & TS-3	MARSHALL	21	5
STA.		TO STA.		
FED. ROAD DIST. NO.		ILLINOIS	FED. AID PROJECT	

SUMMARY OF QUANTITIES

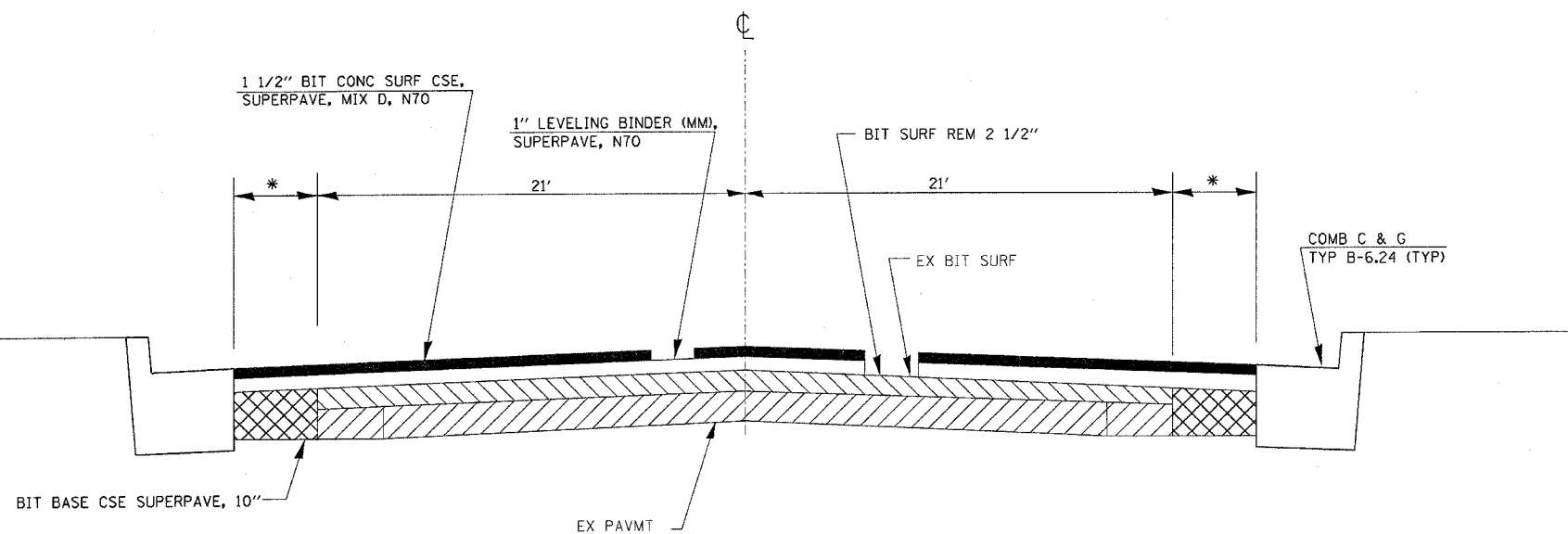
CODE NO.	CONSTRUCTION CODE TYPE: ITEM	UNIT	TOTAL QUANTITY	I000-1A	Y030-1E	Y031-1F
				ROADWAY 90% FED 10% STATE	LIGHTING 100% CITY	TRAFFIC SIGNALS 90% FED 10% STATE
88500100	INDUCTIVE LOOP DETECTOR	EACH	4			4
88600100	DETECTOR LOOP, TYPE I	FOOT	455			455
88800100	PEDESTRIAN PUSH-BUTTON	EACH	8			8
89502385	REMOVE EXISTING CONCRETE FOUNDATION	EACH	8			8
89502380	REMOVE EXISTING HANDHOLE	EACH	4			4
89502375	REMOVE EXISTING TRAFFIC SIGNAL EQUIPMENT	EACH	1			1
X8730027	ELECTRICAL CABLE IN CONDUIT, GROUNDING, NO. 6 1C	FOOT	574			574
X8801300	SIGNAL HEAD ,POLYCARBONATE, LED, 1-FACE, 3-SECTION, BRACKET MOUNTED	EACH	4			4
X8801310	SIGNAL HEAD ,POLYCARBONATE, LED, 1-FACE, 3-SECTION, MAST ARM MOUNTED	EACH	4			4
X8810620	PEDESTRIAN SIGNAL HEAD, LED, 2-FACE, BRACKET MOUNTED	EACH	4			4
* X3550700	BITUMINOUS BASE COURSE SUPERPAVE 10"	SQ YD	232	232		
* X4066426	BITUMINOUS CONCRETE SURFACE COURSE, SUPERPAVE, MIX "D", N70	TON	346	346		
* X4066770	LEVELING BINDER (MACHINE METHOD), SUPERPAVE, N70	TON	231	231		

*SPECIALTY ITEMS

REVISIONS	
NAME	DATE

ILLINOIS DEPARTMENT OF TRANSPORTATION
SUMMARY OF QUANTITIES
 SCALE: VERT. DATE
 HORIZ. DATE
 DRAWN BY
 CHECKED BY

F.A.P. RTE.	SECTION	COUNTY	TOTAL SHEETS	SHEET NO.
649	(22)N & TS-3	MARSHALL	21	6
STA.		TO STA.		
FED. ROAD DIST. NO.		ILLINOIS FED. AID PROJECT		



* VARIES SEE WIDENING PLAN

IL 17
(STA 22+50 TO STA 27+15)

TYPICAL SECTION

	SUPERPAVE LEVELING BINDER	SUPERPAVE SURFACE	SUPERPAVE BASE COURSE**
PG GRADE	PG 64-22	PG 64-22	PG 64-22
MAX % RAP ALLOWABLE*	15%	10%	25%
DESIGN AIR VOIDS	4.0% @ N70	4.0% @ N70	4.0% @ N50
MIXTURE COMPOSITION	IL 9.5	IL 12.5 OR IL 9.5	IL 19.0
FRICTION AGGREGATE	-	MIXTURE D	
PLANT LIMIT CONTROLS	CLASS I	CLASS I	NON-CLASS I
DENSITY CONTROL METHOD	SATISFACTION OF THE ENGINEER	CORES/NUCLEAR	SEE SPECIAL PROVISIONS

*IF RAP IS SELECTED, THE ASPHALT CEMENT GRADE MAY NEED TO BE ADJUSTED. THIS WILL BE DETERMINED BY THE ENGINEER.

** TO BE USED FOR BITUMINOUS BASE COURSE 10" SUPERPAVE

REVISIONS	
NAME	DATE

ILLINOIS DEPARTMENT OF TRANSPORTATION

TYPICAL SECTION

SCALE: VERT. DATE: HORIZ.

DRAWN BY: CHECKED BY:

F.A.P. RTE.	SECTION	COUNTY	TOTAL SHEETS	SHEET NO.
649	(22)N & TS-3	MARSHALL	21	7
STA.		TO STA.		
FED. ROAD DIST. NO.		ILLINOIS FED. AID PROJECT		

LOCATION	SODDING SALT TOLERANT	NITROGEN FERTILIZER NUTRIENT	POTASSIUM FERTILIZER NUTRIENT	PHOSPHOROUS FERTILIZER NUTRIENT	TEMP EROSION CONTROL SEEDING	SUPPLEMENTAL WATERING
	SQ YD	POUND	POUND	POUND	POUND	UNITS
NE QUADRANTS	110	1.2	1.2	1.2	6	1.65
NW QUADRANTS	53	0.6	0.6	0.6	3	0.795
SE QUADRANTS	107	1.2	1.2	1.2	6	1.605
SW QUADRANTS	59	0.6	0.6	0.6	3	0.885
TOTAL	329	4	4	4	18	5

STATION	INLET REMOVAL	INLET TY A TY 20 F & G	SS CLASS A TY1-12"	TRENCH BACKFILL
	EACH	EACH	FOOT	CU YD
IL 17 & 1L 26			10	2
STA. 87+21.60, 36.02' RT		1		
STA. 87+26.67, 26.33' RT	1			
STA. 87+83.96, 25.10' RT	1			
STA. 87+92.61, 38.27' RT		1	16	2
TOTAL	2	2	26	4

LOCATION	BIT SURF REM 2 1/2"	BIT MATL PR CT	AGG PR CT	LEVELING BINDER (MM)	BIT CONC SURF CSE MIX D	CCC & G B-6.24	CCC & G B-6.24 REMOVAL	BIT BASE CSE 10"	EARTH EX
	SQ YD	GALLON	TONS	TONS	TONS	FOOT	FOOT	SQ YD	CU YD
IL 17	2173	174	5	122	182				
IL 26	1926	154	4	109	164				
NE QUAD						171	190	131	36.4
SE QUAD						198	202	30	8.3
NW QUAD						145	155	58	16.1
SW QUAD						184	181	13	3.6
TOTALS	4099	328	9	231	346	698	728	232	64

LOCATION	SIDEWALK REMOVAL	PCC SIDEWALK 4"	DETECTABLE WARNINGS
	SQ FT	SQ FT	SQ FT
NE QUADRANT	804	544	20
NW QUADRANT	495	415	20
SE QUADRANT	600	530	20
SW QUADRANT	478	435	20
TOTALS	2377	1924	80

LOCATION	DRIVEWAY PAVEMENT 8"	DRIVEWAY PAVEMENT REMOVAL
STATION	SQ YD	SQ YD
23+93.4		12
25+30	36	36
86+17	79	79
86+79	65	65
TOTAL	180	192

LOCATION	TEMP PVMT MKS 4" WHITE	TEMP PVMT MKS 4" YELLOW	TEMP PVMT MKS 6" WHITE	TEMP PVMT MKS 12" WHITE	TEMP PVMT MKS 24" WHITE	THERM PVMT MKS 4" YELLOW	THERM PVMT MKS 4" WHITE	THERM PVMT MKS 6" WHITE	THERM PVMT MKS 12' WHITE	THERM PVMT MKS 24' WHITE	RAISED REF PVMT MRK	RAISED REF PVMT MRK	SHORT TERM PVT MRK	WRK ZN PVMT MRK REM
	FOOT	FOOT	FOOT	FOOT	FOOT	FOOT	FOOT	FOOT	FOOT	FOOT	EACH	EACH	FOOT	SQ FT
IL 17 WEST LEG	83	346	123	236	23	346	83.0	123.0	236.0	23.0	5.0	5.0	75	9
IL 17 EAST LEG	90	384	122	248	26	384	90.0	122.0	248.0	26.0	5.0	5.0	81	9
IL 26 NORTH LEG		392	132	204	24	392		132.0	204.0	24.0	5.0		81	9
IL 26 SOUTH LEG	67	368	97	188	18	368	67.0	97.0	188.0	18.0	5.0		78	9
TOTALS	240	1490	474	876	91	1490	240	474.0	876	91.0	20	10	315	36

LOCATION	SIGN STANDARD NUMBER	LEGEND	SIZE	QUANTITY	SIGN PANEL TYPE 1	METAL POST TYPE A
			IN.X IN.		SQ FT	FEET
NO PARKING HERE TO CORNER						
NW QUAD	R7-1C	NO PARKING HERE TO CORNER	12 X 18	1	1.5	12.5
SW QUAD	R7-1C	NO PARKING HERE TO CORNER	12 X 18	1	1.5	12.5
NE QUAD	R7-1C	NO PARKING HERE TO CORNER	12 X 18	1	1.5	12.5
TOTALS				4.5	4.5	37.5

NAME	DATE

ILLINOIS DEPARTMENT OF TRANSPORTATION

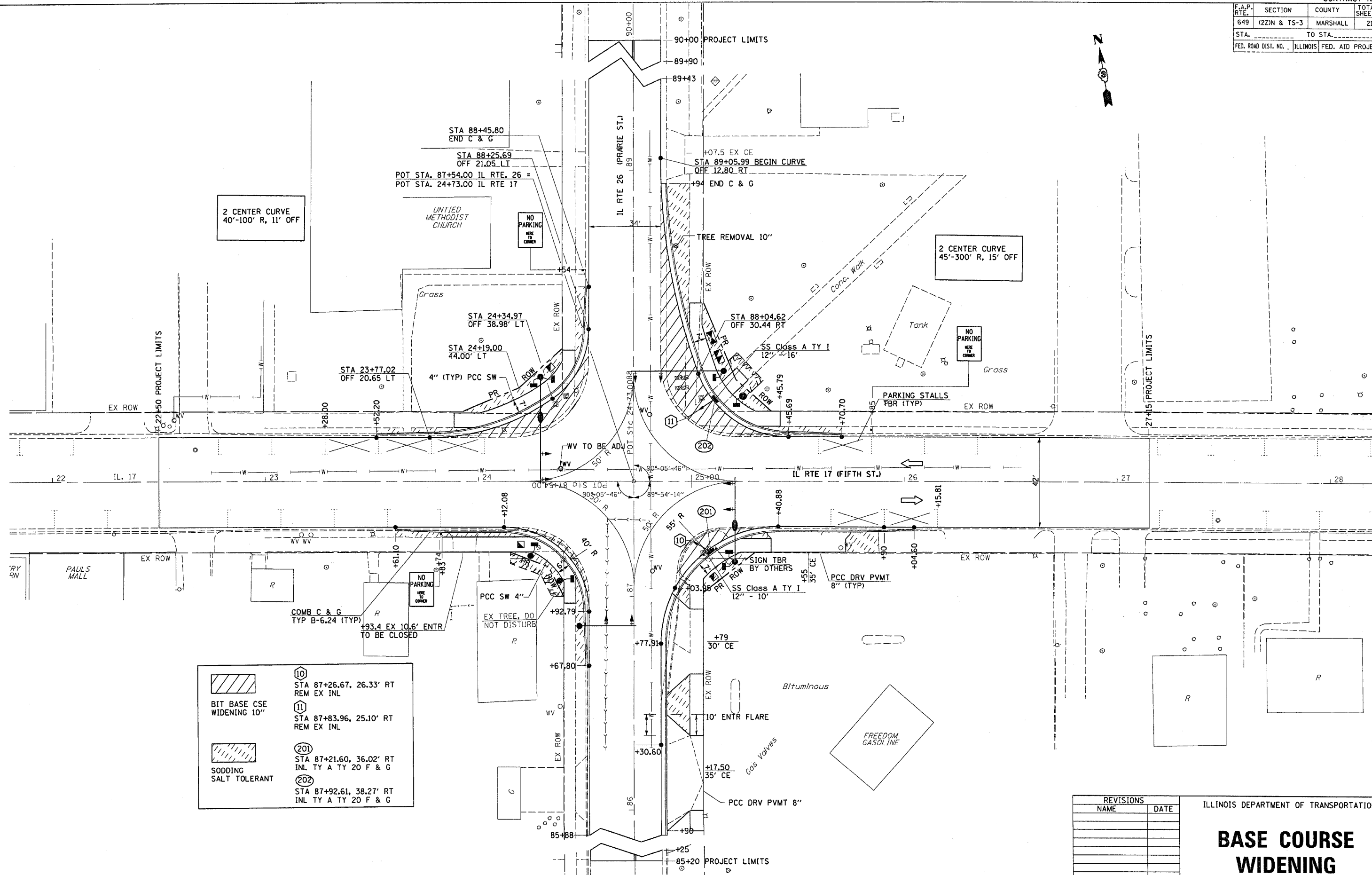
SCHEDULES

SCALE: VERT. _____
HORIZ. _____

DATE _____

DRAWN BY _____
CHECKED BY _____

F.A.P. RTE.	SECTION	COUNTY	TOTAL SHEETS	SHEET NO.
649	(22N & TS-3)	MARSHALL	21	8
STA.	TO STA.			
FED. ROAD DIST. NO.	ILLINOIS	FED. AID PROJECT		



	⑩	STA 87+26.67, 26.33' RT REM EX INL
	⑪	STA 87+83.96, 25.10' RT REM EX INL
	⑳	STA 87+21.60, 36.02' RT INL TY A TY 20 F & G
	㉑	STA 87+92.61, 38.27' RT INL TY A TY 20 F & G

REVISIONS	
NAME	DATE

ILLINOIS DEPARTMENT OF TRANSPORTATION

BASE COURSE WIDENING

F.A.P. RTE.	SECTION	COUNTY	TOTAL SHEETS	SHEET NO.
649	(22N & TS-3)	MARSHALL	21	9
STA. 22+00		TO STA. 28+00		
FED. ROAD DIST. NO.		ILLINOIS FED. AID PROJECT		

SW 1/4 OF SEC. 25, T. 30 N., R. 3 W. 3RD P.M.

PARCEL	POINT TO POINT	BEARING	DISTANCE
3TV0001	0 - 20	N 76° 48' 06" E	28.14'
	20 - 21	N 55° 52' 23" E	27.55'
	21 - 7	S 9° 10' 21" W	29.76'
3TV0002	7 - 0	N 80° 38' 19" W	46.08'
	15 - 12	N 80° 38' 19" W	32.44'
	12 - 3	N 9° 10' 21" E	51.44'
3TV0002 T.E.	3 - 5	S 14° 24' 58" E	39.92'
	5 - 15	S 38° 34' 30" E	22.25'
	15 - 6	N 38° 34' 30" W	13.02'
3TV0003	6 - 5	N 38° 34' 30" W	9.23'
	5 - 4	N 14° 24' 58" W	9.31'
	4 - 13	N 55° 36' 33" E	5.73'
3TV0003 T.E.	13 - 14	S 34° 23' 27" E	17.95'
	14 - 6	S 55° 36' 33" W	8.24'
	16 - 8	S 80° 38' 19" E	24.22'
3TV0004	8 - 10	S 9° 10' 21" W	21.22'
	10 - 9	N 14° 44' 45" W	15.39'
	9 - 16	N 58° 55' 54" W	19.38'
3TV0004 T.E.	16 - 9	S 58° 55' 54" E	19.38'
	9 - 10	S 14° 44' 45" E	15.39'
	10 - 2	N 80° 47' 41" W	4.78'
3TV0004	2 - 1	N 15° 46' 37" W	11.45'
	1 - 17	N 60° 49' 15" W	15.56'
	17 - 16	N 9° 18' 04" E	5.59'
3TV0004	18 - 19	S 61° 51' 58" W	31.28'
	19 - 11	N 9° 10' 21" E	19.04'
	11 - 18	S 80° 38' 19" E	24.88'

PARCEL 3TV0001
THE TRUSTEES OF THE
METHODIST EPISCOPAL CHURCH

TOTAL HOLDING = 43,575 SQ. FT. ±
 TOTAL R.O.W. REQUIRED = 547 SQ. FT. ±
 REMAINDER = 43,028 SQ. FT. ±

PARCEL 3TV0002 DED
COUNTY OF MARSHALL

TOTAL HOLDING = 88,333 SQ. FT. ±
 TOTAL R.O.W. REQUIRED = 653 SQ. FT. ±
 TEMPORARY EASEMENT = 143 SQ. FT. ±
 PURPOSE: SIDEWALK RECONSTRUCTION

TOTAL HOLDING = 7,924 SQ. FT. ±
 TOTAL R.O.W. REQUIRED = 153 SQ. FT. ±
 REMAINDER = 7,771 SQ. FT. ±

PARCEL 3TV0003
LOREN HUNT, ET AL

TOTAL HOLDING = 7,924 SQ. FT. ±
 TOTAL R.O.W. REQUIRED = 153 SQ. FT. ±
 REMAINDER = 7,771 SQ. FT. ±

PARCEL 3TV0004
ROBERT FORT COWAN, TRUSTEE

TOTAL HOLDING = 21,792 SQ. FT. ±
 TOTAL R.O.W. REQUIRED = 237 SQ. FT. ±
 REMAINDER = 21,555 SQ. FT. ±

SURVEYOR'S STATEMENT

I, JOHN R. HUSEMAN, HEREBY CERTIFY THAT I AM A PROFESSIONAL LAND SURVEYOR OF THE STATE OF ILLINOIS, THAT THE SURVEY OF PROPOSED F.A.P. 649 (IL RTE. 17) WAS MADE BY WILLETT HOFMANN & ASSOCIATES, INC. UNDER MY DIRECTION, AND THAT THE SURVEY IS TRUE AND COMPLETE AS SHOWN TO THE BEST OF MY KNOWLEDGE AND BELIEF, THAT ALL MONUMENTS AND MARKS ARE OF THE CHARACTER AND OCCUPY THE POSITION SHOWN THEREON, AND ARE SUFFICIENT TO ENABLE THE SURVEY TO BE RETRACED. THIS PROFESSIONAL SERVICE CONFORMS TO THE CURRENT ILLINOIS MINIMUM STANDARDS FOR A BOUNDARY SURVEY.

DATED _____
 BY _____
 JOHN R. HUSEMAN ILLINOIS PROFESSIONAL LAND SURVEYOR NO. 2452 (EXPIRES NOVEMBER 2006)



NOTE: FOR THE PURPOSES OF THIS PLAT, THE NORTH LINE OF BLOCK 44 HAS BEEN ASSIGNED THE BEARING OF S 80° 38' 19" E.

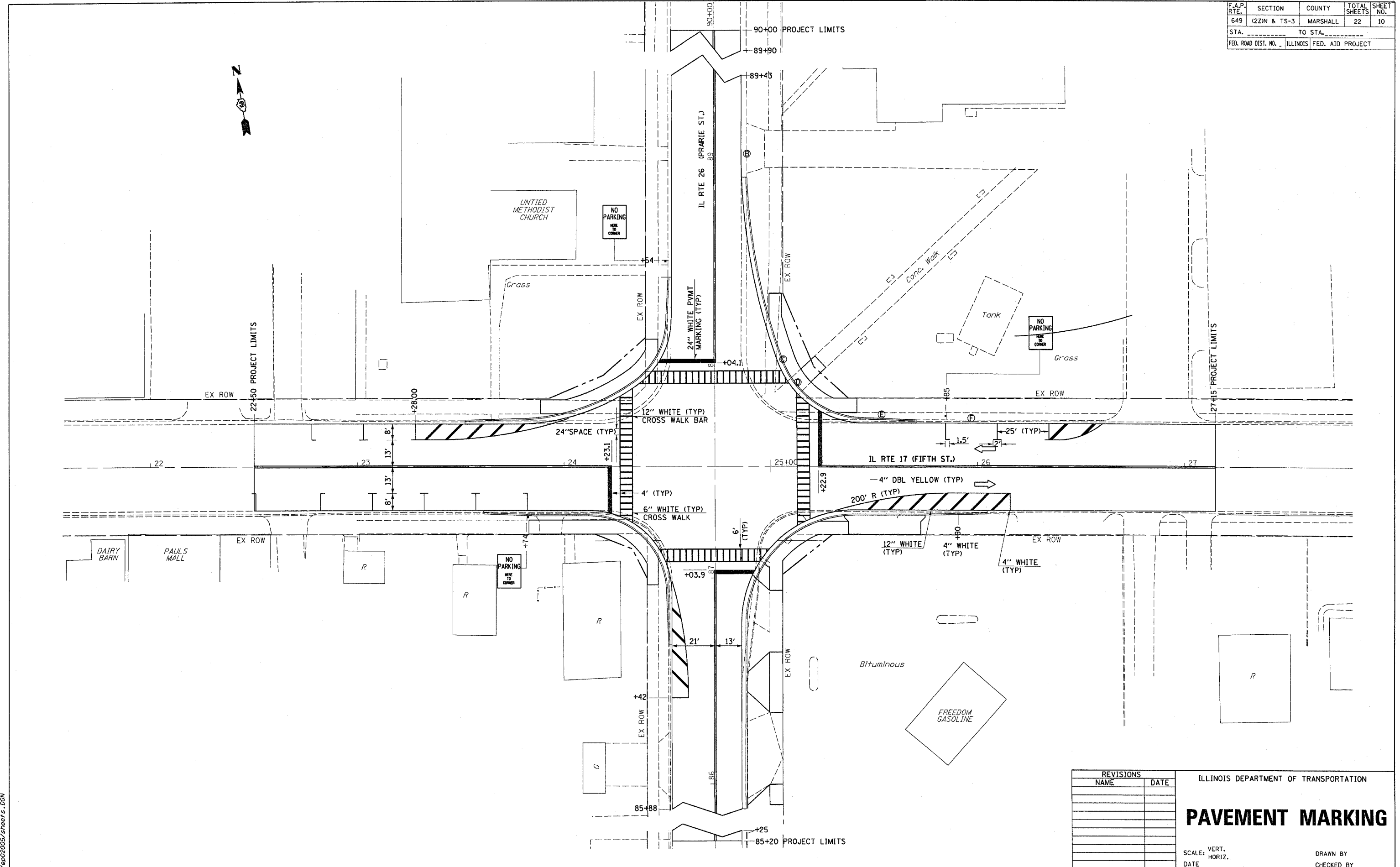
SCALE: 1"=20'

RIGHT OF WAY PLANS

ROUTE FAP 649 (IL RTE. 17)
 SECTION (22) N&TS-3
 PROJECT
 COUNTY MARSHALL
 JOB NO. R-93-011-05
 STA 22+00 TO STA 28+00
 SCALE 1 : 20

JANUARY 13, 2006
 1402005.dwg

F.A.P. RTE.	SECTION	COUNTY	TOTAL SHEETS	SHEET NO.
649	(22)N & TS-3	MARSHALL	22	10
STA. _____		TO STA. _____		
FED. ROAD DIST. NO. _____ ILLINOIS FED. AID PROJECT				



REVISIONS	
NAME	DATE

ILLINOIS DEPARTMENT OF TRANSPORTATION

PAVEMENT MARKING

SCALE: VERT. _____
 HORIZ. _____

DATE _____

DRAWN BY _____
 CHECKED BY _____

JANUARY 10, 2006
 #P02005/S/1001/5-100N

F.A. RTE.	SECTION	COUNTY	TOTAL SHEETS	SHEET NO.
*	(2Z) N & TS-3	MARSHALL	21	11
STA. _____		TO STA. _____		
FED. ROAD DIST. NO. _____		ILLINOIS	FED. AID PROJECT	

* FAP 649 (IL 17) & FAS 2370 (IL 26)

TRAFFIC SIGNAL CONSTRUCTION NOTES

ALL TRAFFIC SIGNALS AND PEDESTRIAN SECTIONS SHALL HAVE 300MM (12") SINGLE LED LENSES.
THE RED SECTIONS OF THE SIGNAL HEADS SHARING THE SAME MAST ARM SHALL BE LEVEL WITH ONE ANOTHER AND MAINTAIN A 4.88 METER (16') MINIMUM CLEARANCE FROM THE HIGHEST POINT OF THE ROADWAY.
THE PROPOSED MAST ARM MOUNTED TRAFFIC SIGNAL HEADS SHALL BE MOUNTED DIRECTLY OVER THE CENTER OF THEIR RESPECTIVE LANES.
ALL TRAFFIC SIGNAL HEAD BRACKETS ARE TO BE ALUMINUM SCHEDULE 80.
ALL TRAFFIC SIGNAL POSTS ARE TO BE GALVANIZED STEEL.
THE #18 3-PAIR TWISTED/SHIELDED CABLE SHALL HAVE THE SAME SLACK AS OTHER SIGNAL CABLE AND WILL BE MEASURED FOR PAYMENT.
ALL DETECTOR LOOPS SHALL UTILIZE A SEPARATE PAIR OF LEAD-INS.
A TYPE II SPLICE SHALL BE USED FOR ALL DETECTOR LEAD-INS.
ALL DETECTOR LOOPS SHALL BE INSTALLED IN THE CENTER OF THEIR RESPECTIVE TRAVEL LANES. THE ENGINEER OF TRAFFIC SHALL BE NOTIFIED FOR VERIFICATION OF DETECTOR PLACEMENT BEFORE INSTALLATION.
THE PROPOSED DETECTOR LOOPS SHALL BE CUT IN THE EXISTING PAVEMENT, MILLED SURFACE, OR BINDER COURSE BEFORE THE FINAL OVERLAY. THE RISER AREA SHALL BE CHIPPED OUT AND FILLED WITH EPOXY. THIS WORK SHALL BE INCLUDED IN THE PRICE FOR DETECTOR LOOPS.
THE REMOVAL AND REPLACEMENT OF BITUMINOUS SHOULDER FOR INSTALLATION OF THE DETECTOR LOOP LEAD-IN SHALL BE CONSIDERED INCLUDED IN THE PRICE FOR DETECTOR LOOPS.
PROPOSED HANDHOLES SHALL BE CAST IN PLACE CONCRETE HANDHOLES.
THE HANDHOLE SHALL BE CONSTRUCTED SO THAT THE TOP OF THE FRAME WILL BE FLUSH WITH THE SURFACE OF THE MEDIAN, SIDEWALK, OR GROUND LINE.
THE LOCATION OF ALL UTILITIES SHALL FIELD VERIFIED BY THE CONTRACTOR BEFORE THE INSTALLATION OF ANY TRAFFIC SIGNAL COMPONENTS.
COILABLE POLYETHYLENE DUCT MAY BE SUBSTITUTED FOR PVC CONDUIT PUSHED OR TRENCHED.
THE TRAFFIC SIGNAL CONTROLLER SHALL BE ORIENTED SO THAT THE DOOR IS FACING AWAY FROM TRAFFIC .
THE DOUBLE HANDHOLE SHALL NOT BE USED IN LIEU OF THE CONTROLLER FOUNDATION PAD.
THE CONTRACTOR MAY ELECT TO PUSH A CONDUIT THAT IS SHOWN TO BE TRENCHED ON THE PLANS. THIS WORK WILL BE MEASURED FOR PAYMENT AND PAID FOR AS CONDUIT IN TRENCH OF THE TYPE AND SIZE SPECIFIED AND TRENCH AND BACKFILL FOR ELECTRICAL WORK.
THE LOCATIONS FOR HANDHOLES AND MAST ARM FOUNDATIONS ARE PROVIDED FOR REFERENCE ONLY. THE ENGINEER OF TRAFFIC SHALL BE NOTIFIED FOR LOCATION VERIFICATION BEFORE INSTALLATION.
ALL SURPLUS MATERIALS SHALL BE DISPOSED OF IN ACCORDANCE WITH ARTICLE 202.03 OF THE STANDARD SPECIFICATIONS.
ANY MAINTENANCE OF EXISTING TRAFFIC SIGNALS SHALL BE CONSIDERED EXTRA WORK IN ACCORDANCE WITH ARTICLE 109.04 OF THE STANDARD SPECIFICATIONS.
ALL SIGNAL BASES SHALL BE LOCATED AT 5 FOOT MINIMUM CLEARANCE FROM CURB UNLESS OTHERWISE DIRECTED BY ENGINEER.
A 1/4" DIAMETER CONTINUOUS HILON ROPE SHALL BE FURNISHED AND LEFT IN PLACE IN ALL CONDUITS BETWEEN HANDHOLES AND FOUNDATIONS OR CONTROLLER AS INCIDENTAL TO THE RESPECTIVE CONDUIT PAY ITEM.
NO ADDITIONAL COMPENSATION WILL BE ALLOWED FOR PLACING CONDUIT AT GREATER THAN 2 FEET MINIMUM DEPTH TO AVOID OBSTACLES SUCH AS UNDERGROUND UTILITIES.
THE CONTRACTOR IS RESPONSIBLE FOR THE COST OF UNCOVERING OR HAND DIGGING AROUND UTILITIES. AS NECESSARY, INCIDENTAL TO THE CONDUIT PAY ITEM.
ALL THREADS OF BOLTS USED IN TRAFFIC COMPONENT ASSEMBLIES SHALL BE COATED WITH A NON-LEAD BASED ANTI-SEIZE COMPOUND. SIMILAR TO LEAD PLATE PRIOR TO ASSEMBLY.

SCHEDULE OF QUANTITIES

ITEM NO.	DESCRIPTION	UNIT	TOTAL QUANTITY
72000200	SIGN PANEL - TYPE 2	SO FT	40
80500200	SERVICE INSTALLATION, TYPE B (MODIFIED)	EACH	1
81012600	CONDUIT IN TRENCH, 2" DIA., PVC	FOOT	557
81012700	CONDUIT IN TRENCH, 3" DIA., PVC	FOOT	74
81013000	CONDUIT IN TRENCH, 3-1/2" DIA., PVC	FOOT	17
81021330	CONDUIT PUSHED, 2" DIA., PVC	FOOT	195
81021350	CONDUIT PUSHED, 3" DIA., PVC	FOOT	150
81021370	CONDUIT PUSHED, 3-1/2" DIA., PVC	FOOT	62
81400400	CONCRETE HANDHOLE	EACH	5
81400600	CONCRETE DOUBLE HANDHOLE	EACH	1
81500200	TRENCH AND BACKFILL FOR ELECTRICAL WORK	FOOT	646
81702130	ELECTRIC CABLE IN CONDUIT, 600 (XLP-TYPE USE) 1/C NO. 6	FOOT	1872
82102400	LUMINAIRE SODIUM VAPOR HORIZONTAL MOUNT 400 WATT	EACH	2
82500605	LIGHTING CONTROLLER PHOTOCELL RELAY	EACH	1
85700205	FULL-ACTUATED CONTROLLER AND TYPE IV CABINET, SPECIAL	EACH	1
86000100	MASTER CONTROLLER	EACH	1
87302130	ELECTRIC CABLE IN CONDUIT, LEAD-IN, NO. 18 3 PAIR	FOOT	973
87301245	ELECTRIC CABLE IN CONDUIT, SIGNAL NO. 14 5C	FOOT	1794
87301255	ELECTRIC CABLE IN CONDUIT, SIGNAL NO. 14 7C	FOOT	548
87601200	PEDESTRIAN PUSH BUTTON POST, GALVANIZED STEEL, TYPE II	EACH	2
87700190	STEEL MAST ARM ASSEMBLY AND POLE, 30 FT.	EACH	1
87700230	STEEL MAST ARM ASSEMBLY AND POLE, 38 FT.	EACH	1
87702900	STEEL COMBINATION MAST ARM ASSEMBLY AND POLE, 34 FT.	EACH	1
87702960	STEEL COMBINATION MAST ARM ASSEMBLY AND POLE, 46 FT.	EACH	1
87800215	CONCRETE FOUNDATION, TYPE D	FOOT	3.5
87800415	CONCRETE FOUNDATION, TYPE E, 36 INCH DIAMETER	FOOT	46
88200410	TRAFFIC SIGNAL BACKPLATE, LOUVERED, FORMED PLASTIC	EACH	8
88500100	INDUCTIVE LOOP DETECTOR	EACH	4
88600100	DETECTOR LOOP, TYPE 1	FOOT	455
88800100	PEDESTRIAN PUSH-BUTTON	EACH	8
89502385	REMOVE EXISTING CONCRETE FOUNDATION	EACH	8
89502380	REMOVE EXISTING HANDHOLE	EACH	4
89502375	REMOVE EXISTING TRAFFIC SIGNAL EQUIPMENT	EACH	1
X8730027	ELECTRIC CABLE IN CONDUIT, GROUNDING, NO. 6 1C	FOOT	574
X8801300	SIGNAL HEAD, POLYCARBONATE, LED, 1-FACE, 3-SECTION, BRACKET MOUNTED	EACH	4
X8801310	SIGNAL HEAD, POLYCARBONATE, LED, 1-FACE, 3-SECTION, MAST ARM MOUNTED	EACH	4
X8810620	PEDESTRIAN SIGNAL HEAD, LED, 2-FACE, BRACKET MOUNTED	EACH	4

PLT DATE = *DATE*
 FILE NAME = *FILEL*
 PLOT SCALE = *SCALEL*
 USER NAME = *USERL*

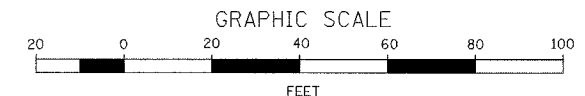
REVISIONS	
NAME	DATE

ILLINOIS DEPARTMENT OF TRANSPORTATION
 GENERAL NOTES AND
 SCHEDULE OF QUANTITIES
 FAP 649 (IL 17) / FAS 2370 (IL 26)
 SECTION (2Z) N & TS-3
 MARSHALL COUNTY

SCALE: VERT. 1" = 20'
 HORIZ. 1 1/2" = 20'

DATE _____ DRAWN BY ARR
 CHECKED BY MVF

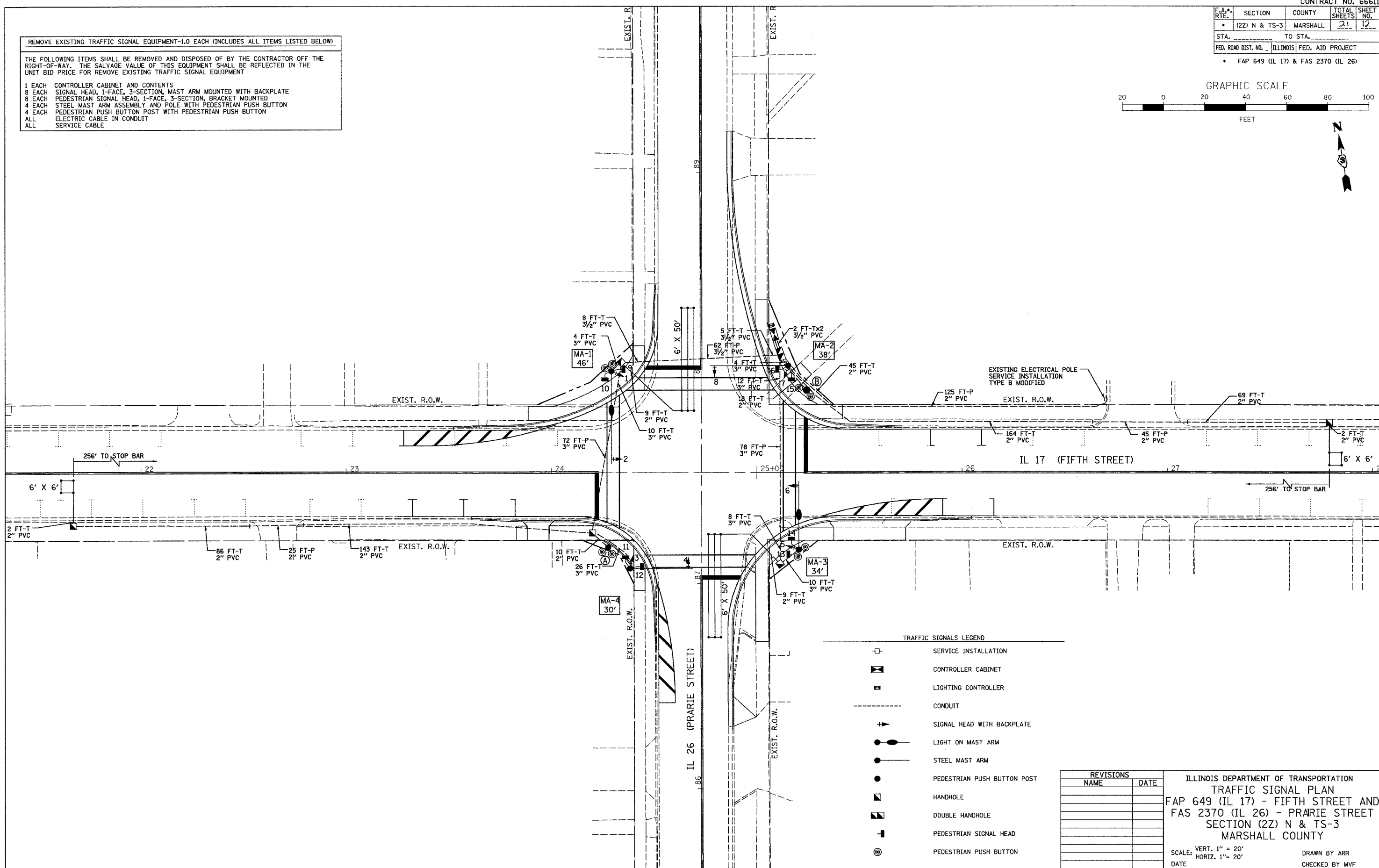
F.A. RTE.	SECTION	COUNTY	TOTAL SHEETS	SHEET NO.
(22) N & TS-3	MARSHALL		21	12
STA. _____ TO STA. _____		FED. ROAD DIST. NO. _____ ILLINOIS FED. AID PROJECT		
* FAP 649 (IL 17) & FAS 2370 (IL 26)				



REMOVE EXISTING TRAFFIC SIGNAL EQUIPMENT-1.0 EACH (INCLUDES ALL ITEMS LISTED BELOW)

THE FOLLOWING ITEMS SHALL BE REMOVED AND DISPOSED OF BY THE CONTRACTOR OFF THE RIGHT-OF-WAY. THE SALVAGE VALUE OF THIS EQUIPMENT SHALL BE REFLECTED IN THE UNIT BID PRICE FOR REMOVE EXISTING TRAFFIC SIGNAL EQUIPMENT

1 EACH CONTROLLER CABINET AND CONTENTS
 8 EACH SIGNAL HEAD, 1-FACE, 3-SECTION, MAST ARM MOUNTED WITH BACKPLATE
 8 EACH PEDESTRIAN SIGNAL HEAD, 1-FACE, 3-SECTION, BRACKET MOUNTED
 4 EACH STEEL MAST ARM ASSEMBLY AND POLE WITH PEDESTRIAN PUSH BUTTON
 4 EACH PEDESTRIAN PUSH BUTTON POST WITH PEDESTRIAN PUSH BUTTON
 ALL ELECTRIC CABLE IN CONDUIT
 ALL SERVICE CABLE



TRAFFIC SIGNALS LEGEND

- SERVICE INSTALLATION
- ▣ CONTROLLER CABINET
- LIGHTING CONTROLLER
- CONDUIT
- + SIGNAL HEAD WITH BACKPLATE
- LIGHT ON MAST ARM
- STEEL MAST ARM
- PEDESTRIAN PUSH BUTTON POST
- HANDHOLE
- DOUBLE HANDHOLE
- ▬ PEDESTRIAN SIGNAL HEAD
- ⊙ PEDESTRIAN PUSH BUTTON

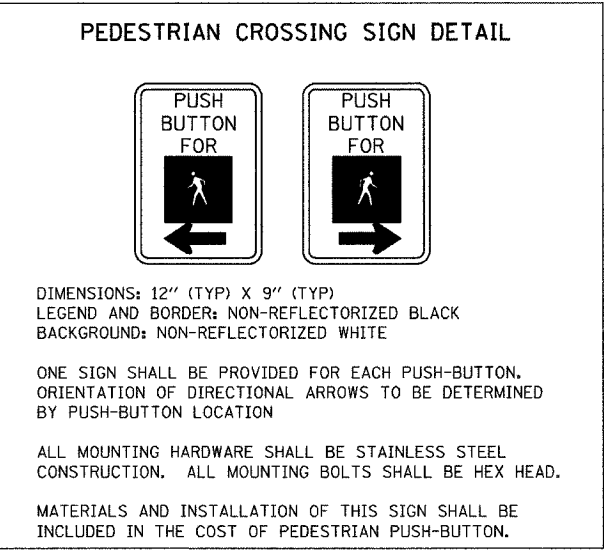
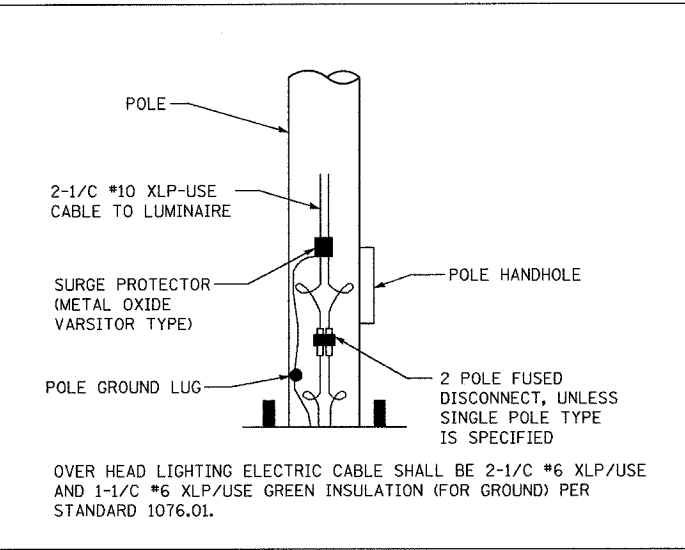
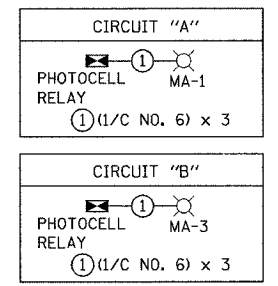
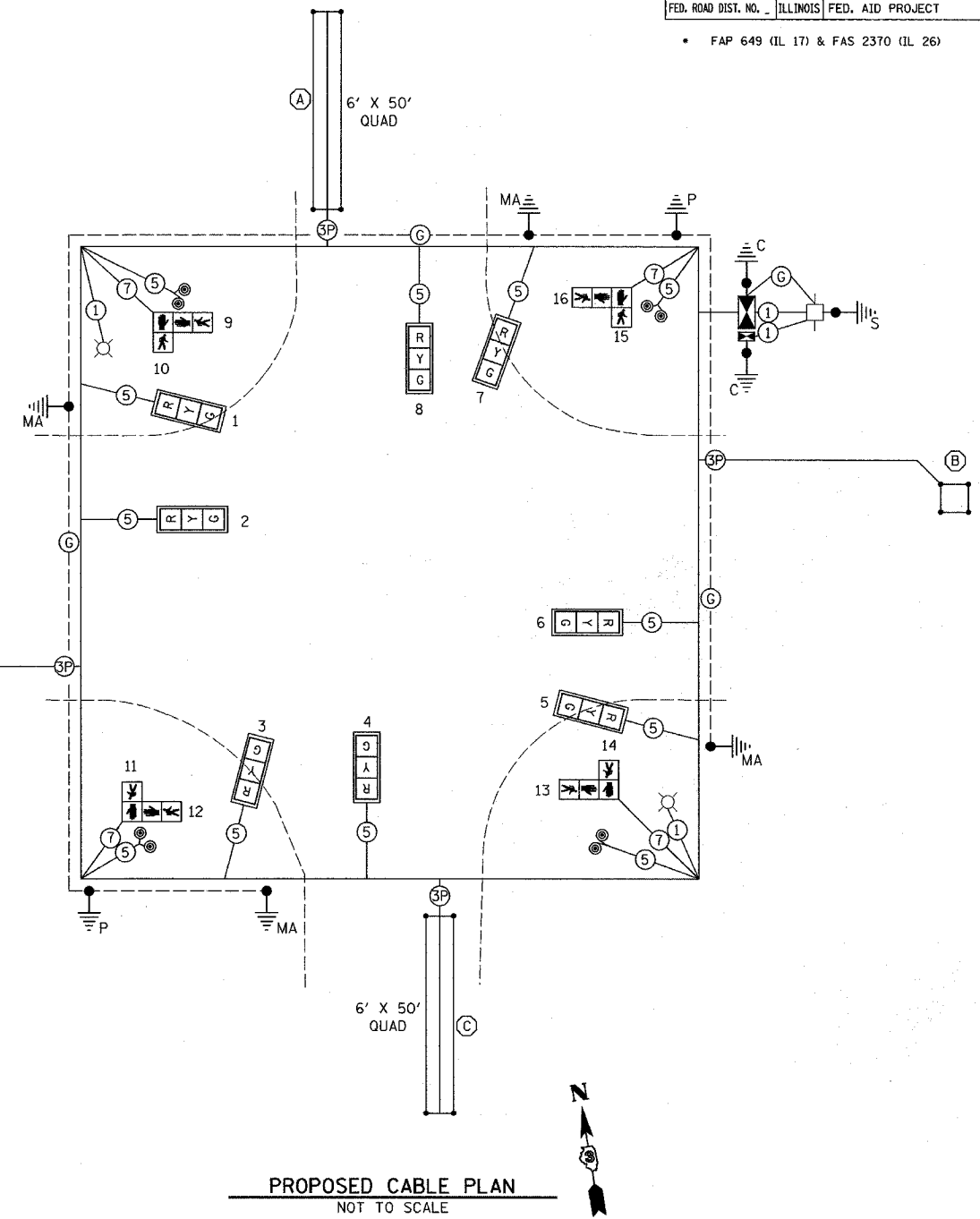
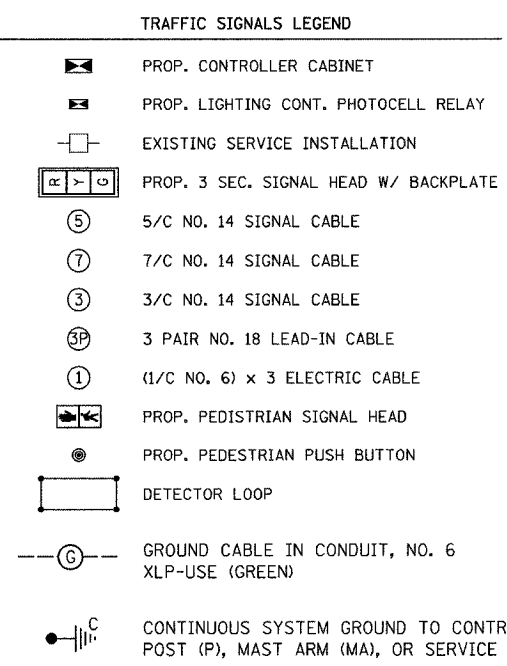
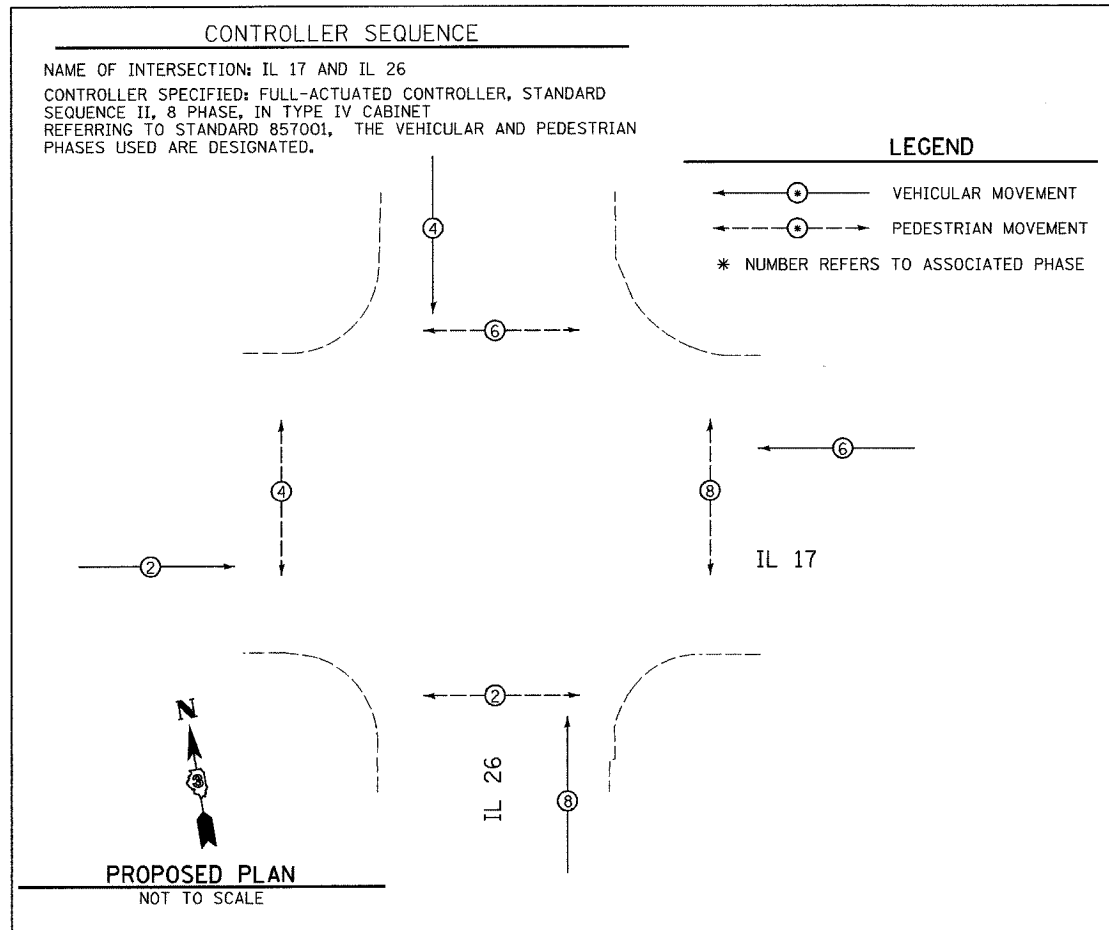
REVISIONS	
NAME	DATE

ILLINOIS DEPARTMENT OF TRANSPORTATION
 TRAFFIC SIGNAL PLAN
 FAP 649 (IL 17) - FIFTH STREET AND
 FAS 2370 (IL 26) - PRAIRIE STREET
 SECTION (22) N & TS-3
 MARSHALL COUNTY

SCALE: VERT. 1" = 20'
 HORIZ. 1 1/2" = 20'

DATE _____ DRAWN BY ARR
 CHECKED BY MVF

PLOT DATE = 04/26/06
 FILE NAME = 06FILEL06
 USER NAME = MUSEV



- ### CABLE NOTES
- ALL PEDESTRIAN INDICATIONS SHALL UTILIZE INTERNATIONAL HAND/WALK PERSON SYMBOLS.
 - ALL TRAFFIC SIGNAL MAST ARMS, POSTS, HANDHOLES (LIDS, RINGS, FRAMES), PEDESTRIAN PUSH-BUTTON POSTS, CABINETS, AND PHOTOCELL RELAY SHALL BE GROUNDED IN ACCORDANCE WITH NEC REQUIREMENTS.

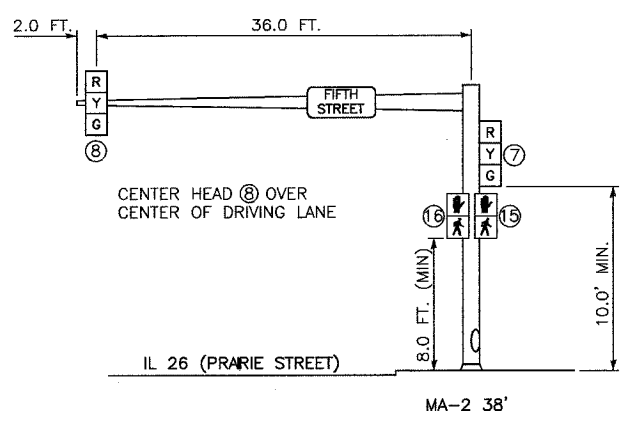
REVISIONS		ILLINOIS DEPARTMENT OF TRANSPORTATION TRAFFIC SIGNAL PLAN FAP 649 (IL 17) - FIFTH STREET AND FAS 2370 (IL 26) - PRARIE STREET SECTION (2Z) N & TS-3 MARSHALL COUNTY
NAME	DATE	

SCALE: VERT. 1" = 20'
 HORIZ. 1" = 20'

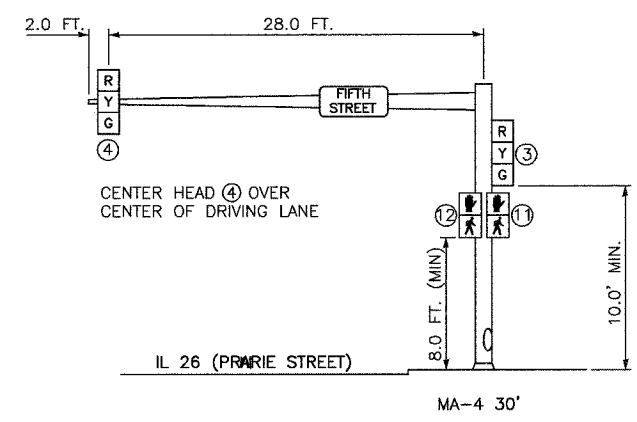
DATE _____ DRAWN BY ARR
 CHECKED BY MVF

DATE: _____
 DRAWN BY: _____
 CHECKED BY: _____
 USER NAME: _____

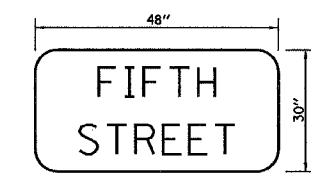
CONTRACT NO. 66611				
F.A. RTE.	SECTION	COUNTY	TOTAL SHEETS	SHEET NO.
• (22) N & TS-3	MARSHALL		21	14
STA.	TO STA.			
FED. ROAD DIST. NO.	ILLINOIS	FED. AID PROJECT		
• FAP 649 (IL 17) & FAS 2370 (IL 26)				



NORTH BOUND TRAFFIC SIGNAL
NORTHEAST CORNER OF IL 17 & IL 26

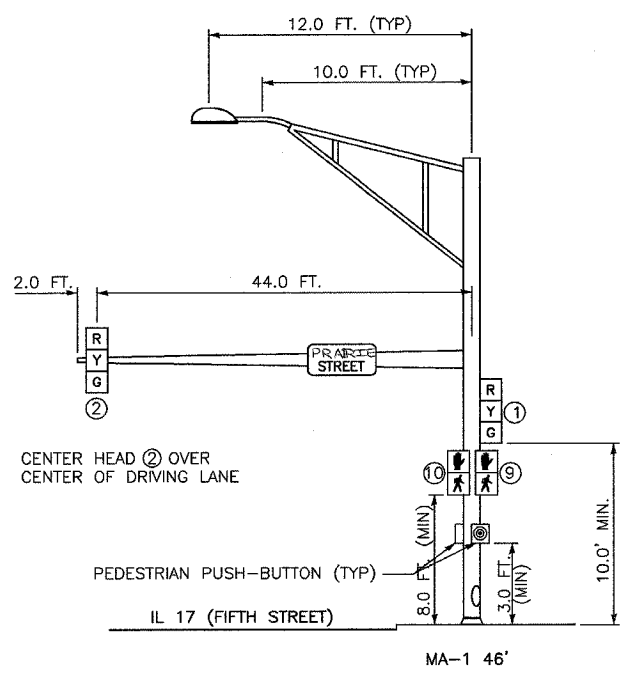


SOUTH BOUND TRAFFIC SIGNAL
SOUTHWEST CORNER OF IL 17 & IL 26

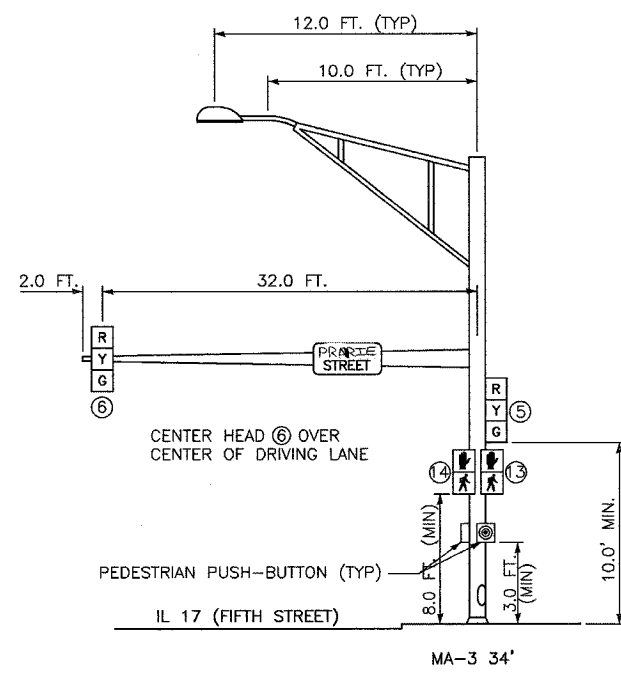


TYPE A SHEETING REQUIRED
 8" D SERIES LETTERS
 2 SIGNS REQUIRED = 10.0 SQ. FT. EACH
 = 20.0 SQ. FT. TOTAL

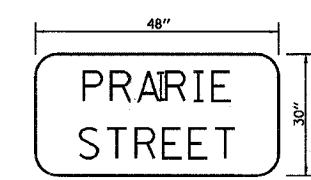
THIS STREET NAME SIGN SHALL BE PLACED ON THE MAST ARMS PARALLEL WITH FIFTH STREET



WEST BOUND TRAFFIC SIGNAL
NORTHWEST CORNER OF IL 17 & IL 26



EAST BOUND TRAFFIC SIGNAL
SOUTHEAST CORNER OF IL 17 & IL 26



TYPE A SHEETING REQUIRED
 8" D SERIES LETTERS
 2 SIGNS REQUIRED = 10.0 SQ. FT. EACH
 = 20.0 SQ. FT. TOTAL

THIS STREET NAME SIGN SHALL BE PLACED ON THE MAST ARMS PARALLEL WITH PRAIRIE STREET

PLOT DATE = 04/15/14
 FILE NAME = 041514
 PLOT SCALE = 1/4" = 20'
 USER NAME = MUSER

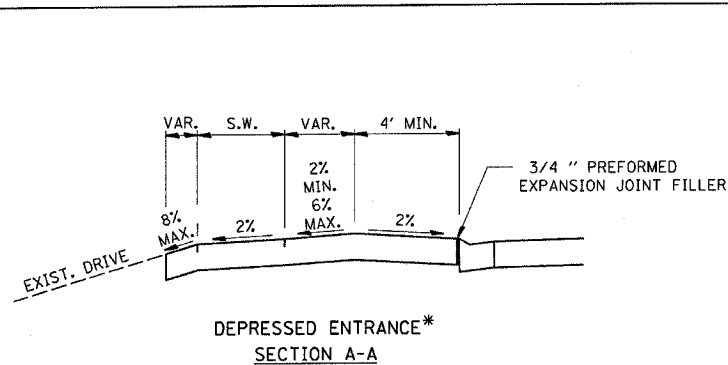
REVISIONS	
NAME	DATE

ILLINOIS DEPARTMENT OF TRANSPORTATION
 TRAFFIC SIGNAL PLAN
 FAP 649 (IL 17) - FIFTH STREET AND
 FAS 2370 (IL 26) - PRAIRIE STREET
 SECTION (22) N & TS-3
 MARSHALL COUNTY

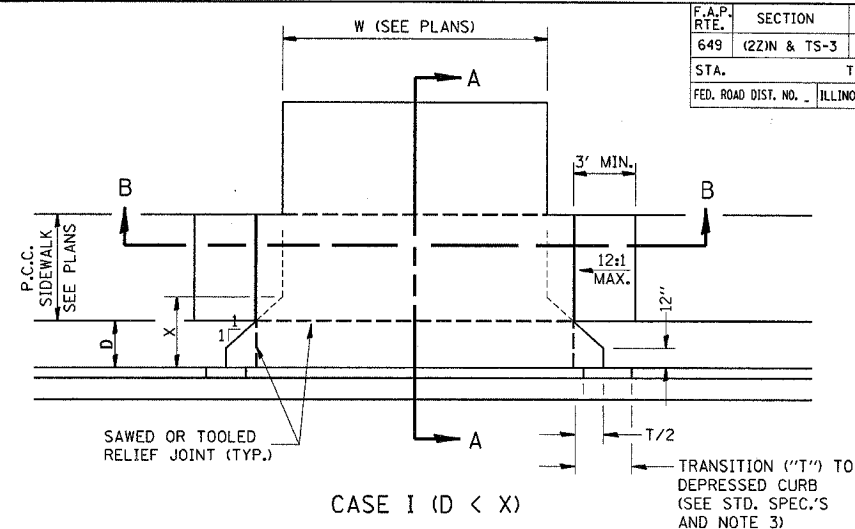
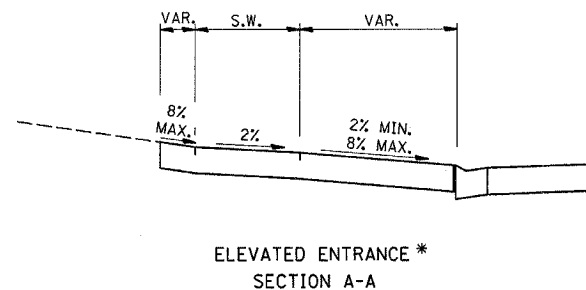
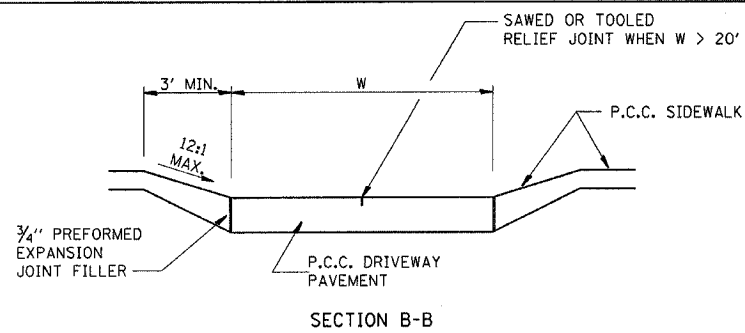
SCALE: VERT. 1" = 20'
 HORIZ. 1" = 20'

DATE _____ DRAWN BY ARR
 CHECKED BY MVF

F.A.P. RTE.	SECTION	COUNTY	TOTAL SHEETS	SHEET NO.
649	(22N & TS-3)	MARSHALL	21	15
STA. TO STA.		FED. ROAD DIST. NO. ILLINOIS FED. AID PROJECT		



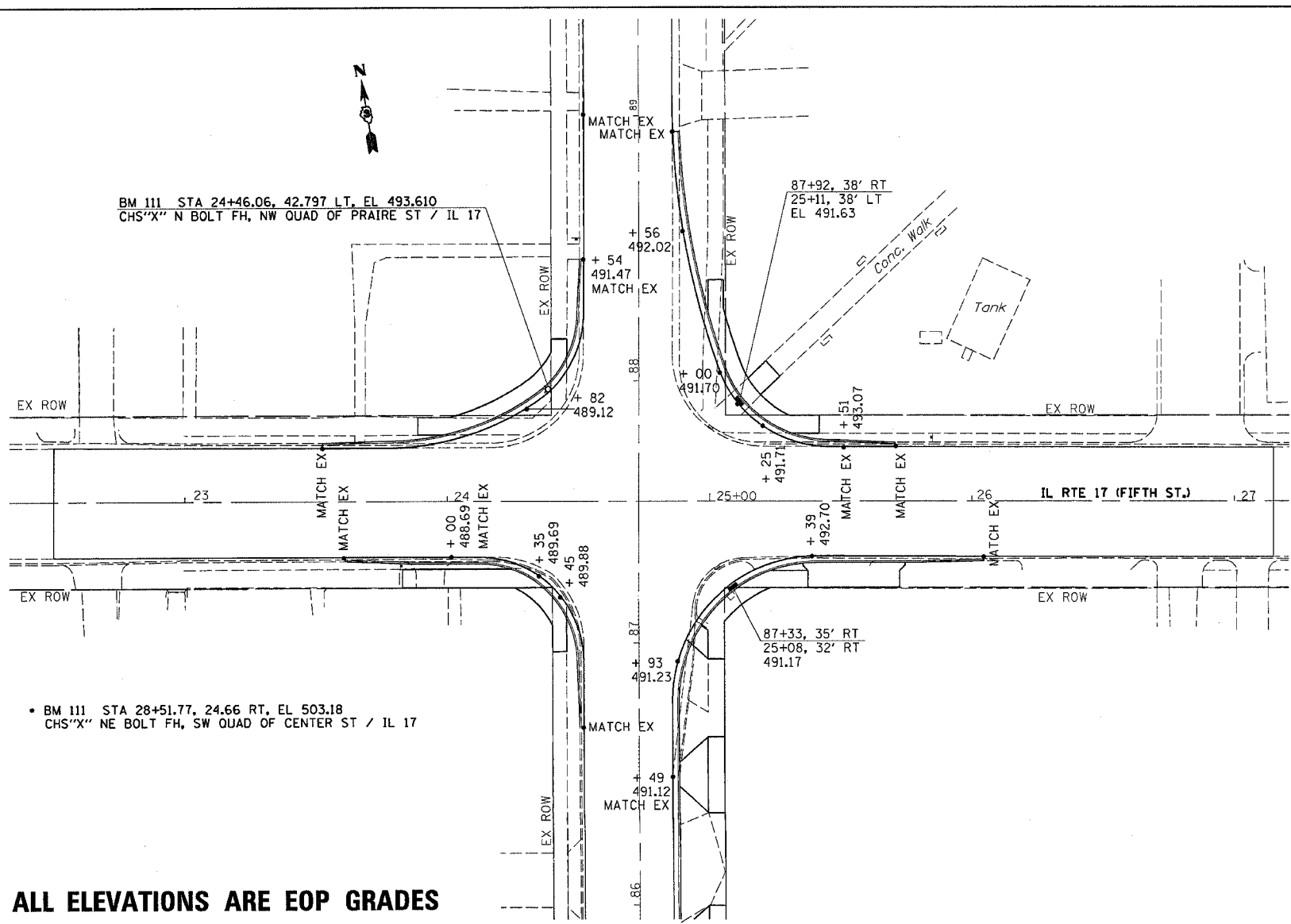
*(SEE X-SECTIONS FOR ENTRANCE PROFILE.)



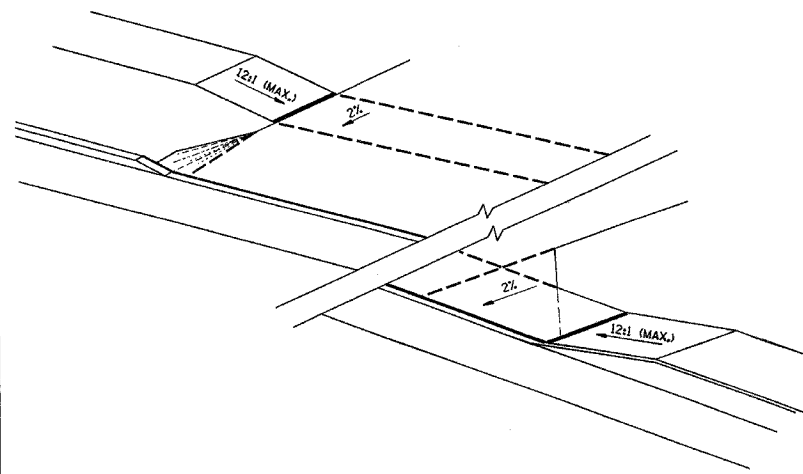
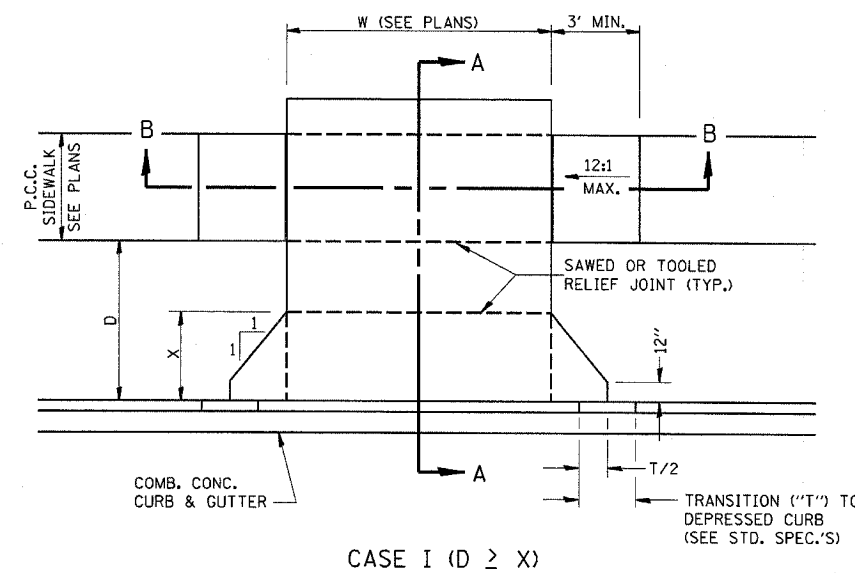
GENERAL NOTES:

1. X = 7' (NON-COMMERCIAL) X = 15' (COMMERCIAL)
2. COST OF EXPANSION JOINTS AND RELIEF JOINTS SHALL BE INCLUDED IN THE COST OF THE P.C.C. DRIVEWAY PAVEMENT.
3. AS THE DIMENSION "D" APPROACHES ZERO, THE TRANSITION TO DEPRESSED CURB SHALL BE NO STEEPER THAN 12:1

PCC URBAN ENTRANCES

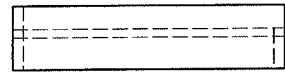


ALL ELEVATIONS ARE EOP GRADES

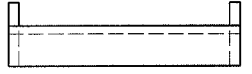


PCC URBAN ENTRANCES
DETAILS

F.A.P. RTE.	SECTION	COUNTY	TOTAL SHEETS	SHEET NO.
649	(22)N & TS-3	MARSHALL	21	16
STA.		TO STA.		
FED. ROAD DIST. NO.		ILLINOIS FED. AID PROJECT		

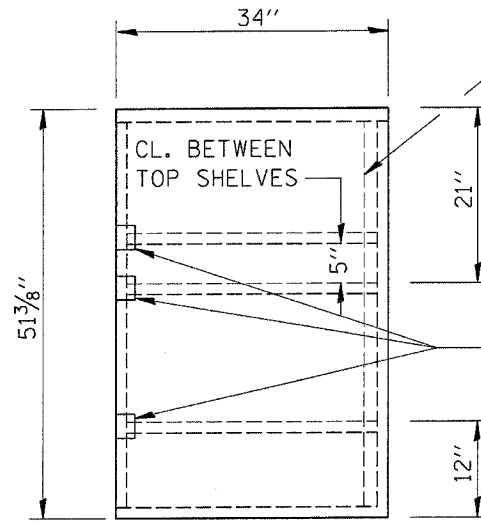


SHELF SIDE VIEW

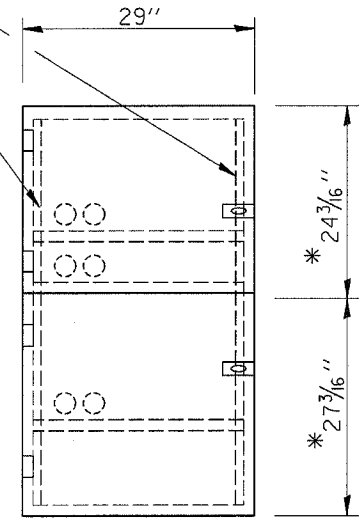


SHELF FRONT VIEW

1/2" X 1/2" FLAT STOCK WELD TO FORM DOOR FRAME AND ALSO AROUND PERIMETER OF EACH DOOR.



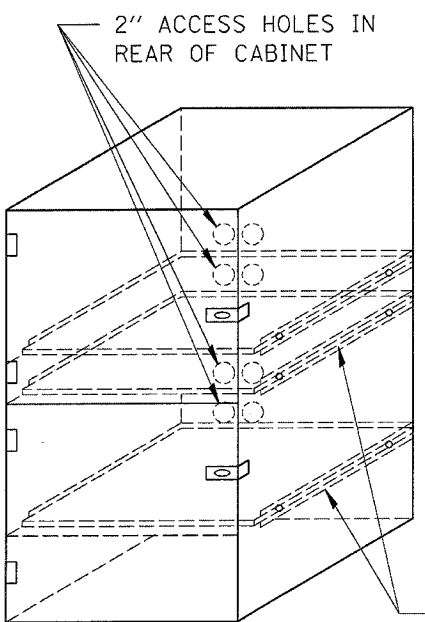
SIDE VIEW



FRONT VIEW

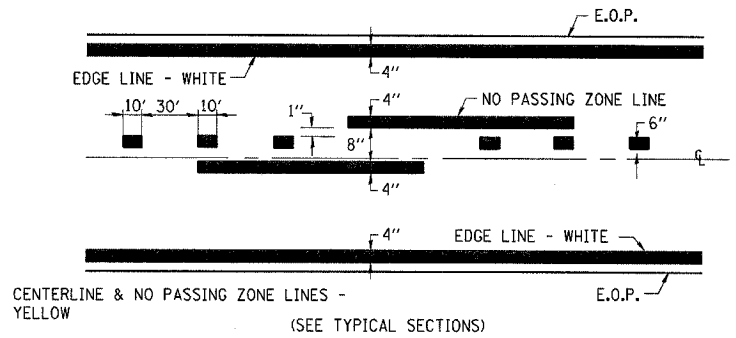
*ALLOWS FOR 1/8" CLEARANCE AT TOP AND BOTTOM OF CABINET AND BETWEEN DOORS.

- NOTES:
1. USE 16 GAUGE STEEL FOR CABINET.
 2. THE TOP SHELF SHALL SLIDE IN OR OUT WITH THE TOP DOOR OPEN.
 3. ALL HINGES AND HASPS WILL BE WELDED TO THE CABINET.
 4. ALL EDGES SHALL BE GROUND SMOOTH.
 5. TWO (2" DIA.) ACCESS HOLES WILL BE REQUIRED FOR EACH SHELF.
 6. CABINET SHALL BE PAINTED WITH TWO COATS OF FLAT PAINT.
 7. 2 EACH MATCHING KEY PADLOCKS, WITH 3 KEYS PROVIDED, MASTER MODEL 3 T OR EQUIVALENT.
 8. 4 EACH PLAIN STEEL, NON-REMOVABLE PIN, NO HOLE 4"X4" SQUARE CORNER HINGES TO BE WELDED ON.
 9. 2 EACH EXTRA HEAVY, PLAIN STEEL, FIXED STAPLE, NO HOLE, 7 1/4 " HASPS TO BE WELDED ON.

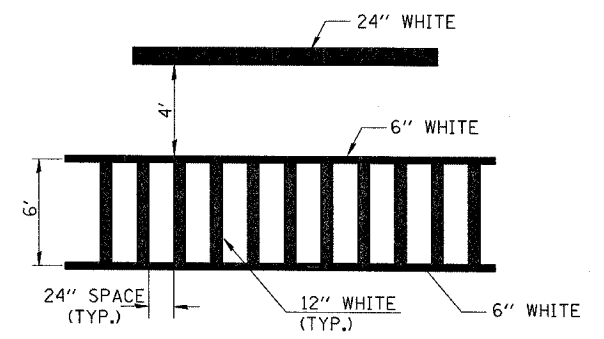


FLAT STOCK DIMENSIONS VARY DEPENDING ON TYPE OF ROLLER ASSEMBLY.

LOCKABLE COMPUTER CABINET



PAVEMENT MARKING



TYPICAL SPACING DETAIL FOR CROSSWALKS AND STOP BARS

REVISIONS	
NAME	DATE

ILLINOIS DEPARTMENT OF TRANSPORTATION

DETAILS

SCALE: VERT. DATE HORIZ. DRAWN BY CHECKED BY

F.A.P. RTE.	SECTION	COUNTY	TOTAL SHEETS	SHEET NO.
649	(22)N & TS-3	MARSHALL	21	17
STA.		TO STA.		
FED. ROAD DIST. NO.		ILLINOIS	FED. AID PROJECT	



Illinois Department of Transportation
Division of Highways
Illinois Department of Transportation

SOIL BORING LOG

Date 9/21/05

ROUTE FAP 649 17 DESCRIPTION Traffic Signal Borings at intersection of IL 17 & IL 26 LOGGED BY Larry Myers

SECTION (22)N&TS-3 LOCATION SW 14, SEC. 25, TWP. 30, RNG. 10, 4th PM

COUNTY Marshall DRILLING METHOD Hollow Stem Auger HAMMER TYPE CME Automatic

STRUCT. NO. Station	D E P T H ft	B L O W S Qu	U C S Qu (tsf)	M O I S T ure (%)	Soil Description															
					Surface Water Elev. _____ ft	Stream Bed Elev. _____ ft	Groundwater Elev.: First Encounter _____ ft Upon Completion _____ ft After _____ Hrs. _____ ft	D E P T H ft	B L O W S Qu (6")	U C S Qu (tsf)	M O I S T ure (%)									
Augered Brown Silty Loam																				
Very Stiff Brown Sandy Loam (Fine/Very Fine Sand) FILL		3																		
		3	3.5	6.2																
		5	P																	
		-5																		
		10		7.1																
Very stiff Brown Grey Loam (Mix of sand gravel, silt in clay material)		13																		
		15	3.5	3.3																
			P																	
Medium brown loamy fine sand / course gravel up to cobble size.		9																		
		6		3.4																
		6																		
* A cobble sized rock effected the blow counts at 12.5' to 14' as well as at 22.5' to 24'.		-10																		
		3																		
There was no recovery between 15' and 19'. Auger cuttings indicate same material with large amount of coarse gravel.		8		2.6																
		12																		
		9																		
		30		3.2																
		9 *																		
		-15																		
		2																		
		12																		
		14																		
		7																		
		10																		
		12																		
		-20																		

The Unconfined Compressive Strength (UCS) Failure Mode is indicated by (B-Bulge, S-Shear, P-Penetrometer)
The SPT (N value) is the sum of the last two blow values in each sampling zone (AASHTO T206)
BBS, from 137 (Rev. 8-99)



Illinois Department of Transportation
Division of Highways
Illinois Department of Transportation

SOIL BORING LOG

Date 9/21/05

ROUTE FAP 649 17 DESCRIPTION Traffic Signal Borings at intersection of IL 17 & IL 26 LOGGED BY Larry Myers

SECTION (22)N&TS-3 LOCATION SW 14, SEC. 25, TWP. 30, RNG. 10, 4th PM

COUNTY Marshall DRILLING METHOD Hollow Stem Auger HAMMER TYPE CME Automatic

STRUCT. NO. Station	D E P T H ft	B L O W S Qu	U C S Qu (tsf)	M O I S T ure (%)	Soil Description															
					Surface Water Elev. _____ ft	Stream Bed Elev. _____ ft	Groundwater Elev.: First Encounter _____ ft Upon Completion _____ ft After _____ Hrs. _____ ft	D E P T H ft	B L O W S Qu (6")	U C S Qu (tsf)	M O I S T ure (%)									
Augered brown Silty Loam																				
Very stiff brown Sandy Loam. (Fine to very fine sand). Fill?		5																		
		3	2.0	5.0																
		4	P																	
		-5																		
		10																		
Hard Brown Loam (mix of sand, gravel, cobble, silt in clay matrix).		15																		
		12		8.0																
		10																		
		17		4.0																
		10																		
Medium Brown Loamy Fine Sand / Course Gravel up to cobble size. (High course gravel content).		6																		
		12		3.4																
		8																		
		-10																		
		3																		
		7		3.8																
		8																		
		12																		
		10		4.5																
		10																		
		-15																		
		5																		
		9		2.9																
		7																		
		5																		
		8		3.8																
		9																		
		-20																		

The Unconfined Compressive Strength (UCS) Failure Mode is indicated by (B-Bulge, S-Shear, P-Penetrometer)
The SPT (N value) is the sum of the last two blow values in each sampling zone (AASHTO T206)
BBS, from 137 (Rev. 8-99)

REVISIONS	
NAME	DATE

ILLINOIS DEPARTMENT OF TRANSPORTATION

SOIL BORING LOG

DATE _____ DRAWN BY _____
CHECKED BY _____

2/27/2006 c:\projects\ep02005\bor logs.dgn

FAP RTE	SECTION	COUNTY	TOTAL SHEETS	SHEET NO.
649	(22)N & TS-3	MARSHALL	21	18
STA 22+66		TO STA 24+39		
FED. ROAD DIST. NO. ILLINOIS		FED. AID PROJECT		

FINAL SURVEY	SURVEYED	BY	DATE
NOTE BOOK	PLOTTED		
NO.	AREAS CHECKED		

ORIGINAL SURVEY	SURVEYED	BY	DATE
NOTE BOOK	PLOTTED		
NO.	AREAS CHECKED		

PLOT DATE = 9/27/2006
 FILE NAME = 66611
 PLOT SCALE = 850/1
 USER NAME = MUSERN

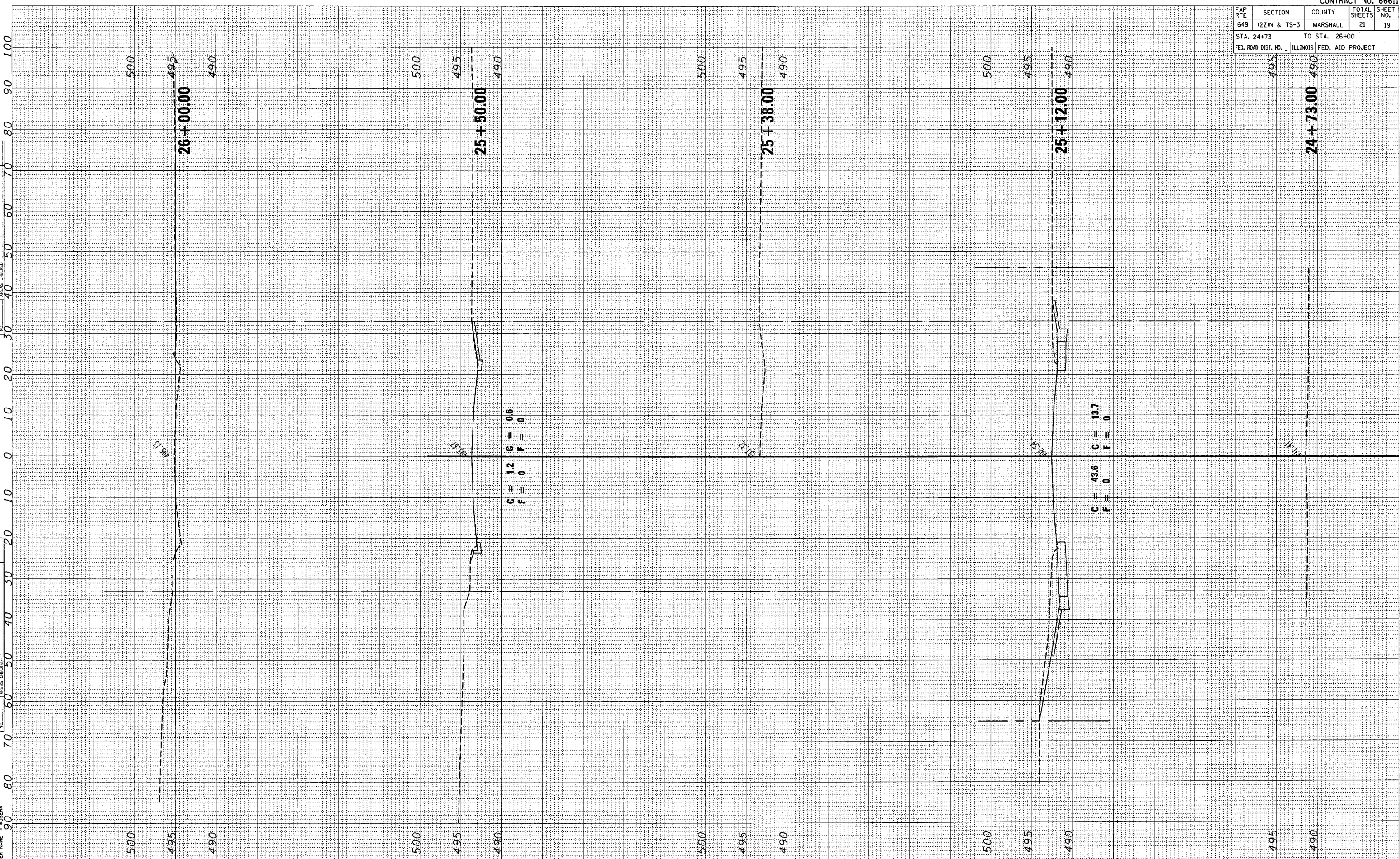


FAP RTE	SECTION	COUNTY	TOTAL SHEETS	SHEET NO.
649	(22)N & TS-3	MARSHALL	21	19
STA. 24+73		TO STA. 26+00		
FED. ROAD DIST. NO.		ILLINOIS FED. AID PROJECT		

FINAL SURVEY	SURVEYED	BY	DATE
NOTE BOOK	PLOTTED		
NO.	TEMPLATE		
	AREAS		
	CHECKED		

ORIGINAL SURVEY	SURVEYED	BY	DATE
NOTE BOOK	PLOTTED		
NO.	TEMPLATE		
	AREAS		
	CHECKED		

PLOT DATE = 2/27/2006
 FILE NAME = #FILEL9
 FILE NO. = #FILEL9
 USER NAME = #USER9

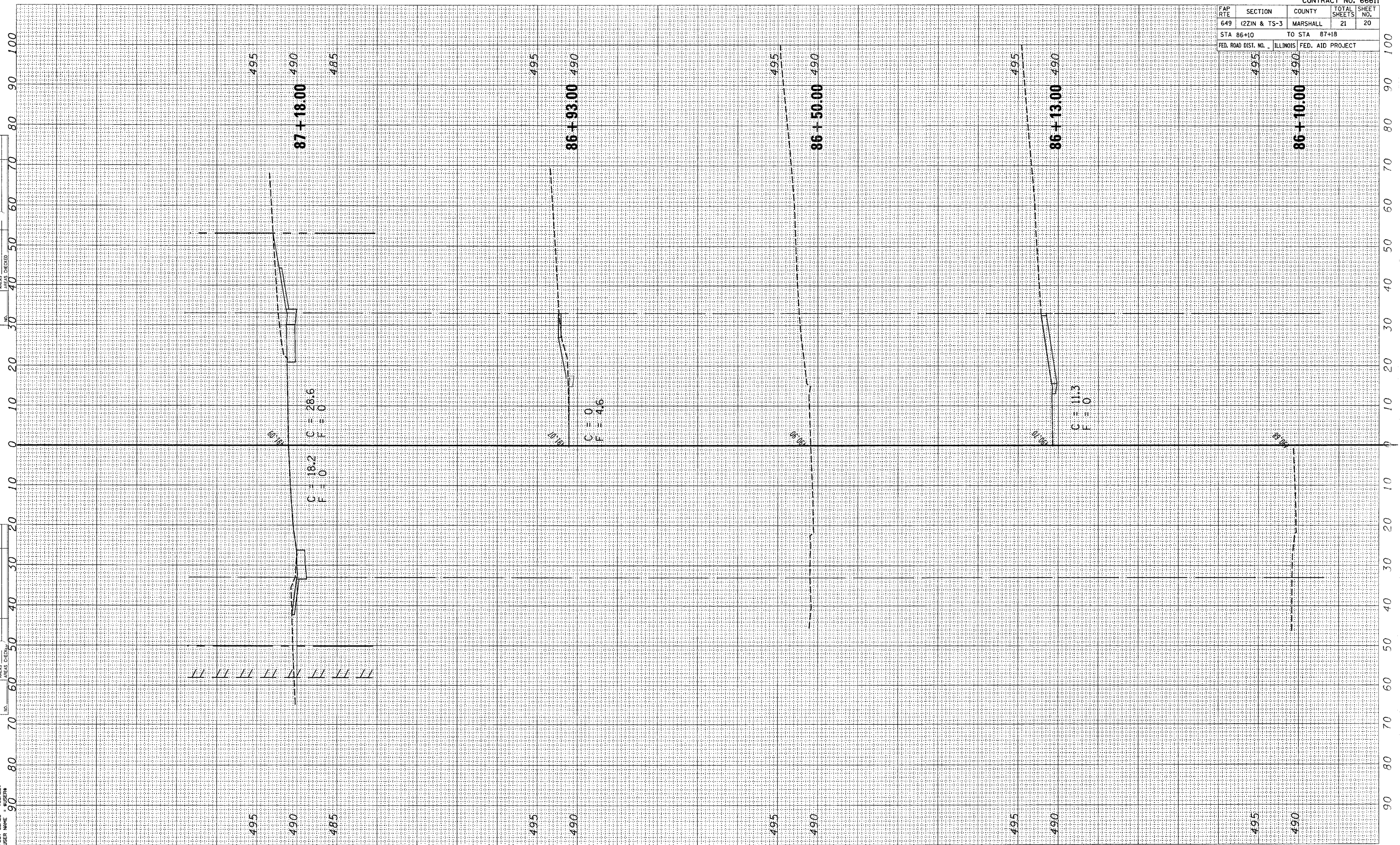


FAP RTE	SECTION	COUNTY	TOTAL SHEETS	SHEET NO.
649	(22)N & TS-3	MARSHALL	21	20
STA 86+10		TO STA 87+18		
FED. ROAD DIST. NO.		ILLINOIS FED. AID PROJECT		

FINAL SURVEY
 SURVEYED _____
 PLOTTED _____
 NOTE BOOK _____
 AREAS CHECKED _____
 NO. _____
 BY _____
 DATE _____

ORIGINAL SURVEY
 SURVEYED _____
 PLOTTED _____
 NOTE BOOK _____
 AREAS CHECKED _____
 NO. _____
 BY _____
 DATE _____

PLOT DATE = 2/27/2006
 FILE NAME = #FILE#
 PLOT SCALE = #SCALE#
 USER NAME = #USER#



FAP RTE	SECTION	COUNTY	TOTAL SHEETS	SHEET NO.
649	122IN & TS-3	MARSHALL	21	21
STA 87+54		TO STA 89+07		
FED. ROAD DIST. NO.		ILLINOIS FED. AID PROJECT		

ORIGINAL SURVEY
 SURVEYED _____
 PLOTTED _____
 NOTE BOOK _____
 AREAS CHECKED _____
 NO. _____
 BY _____
 DATE _____

ORIGINAL SURVEY
 SURVEYED _____
 PLOTTED _____
 NOTE BOOK _____
 AREAS CHECKED _____
 NO. _____
 BY _____
 DATE _____

PLOT DATE = 2/27/2006
 FILE NAME = 87LE1
 PLOT SCALE = 1"=50'
 USER NAME =

