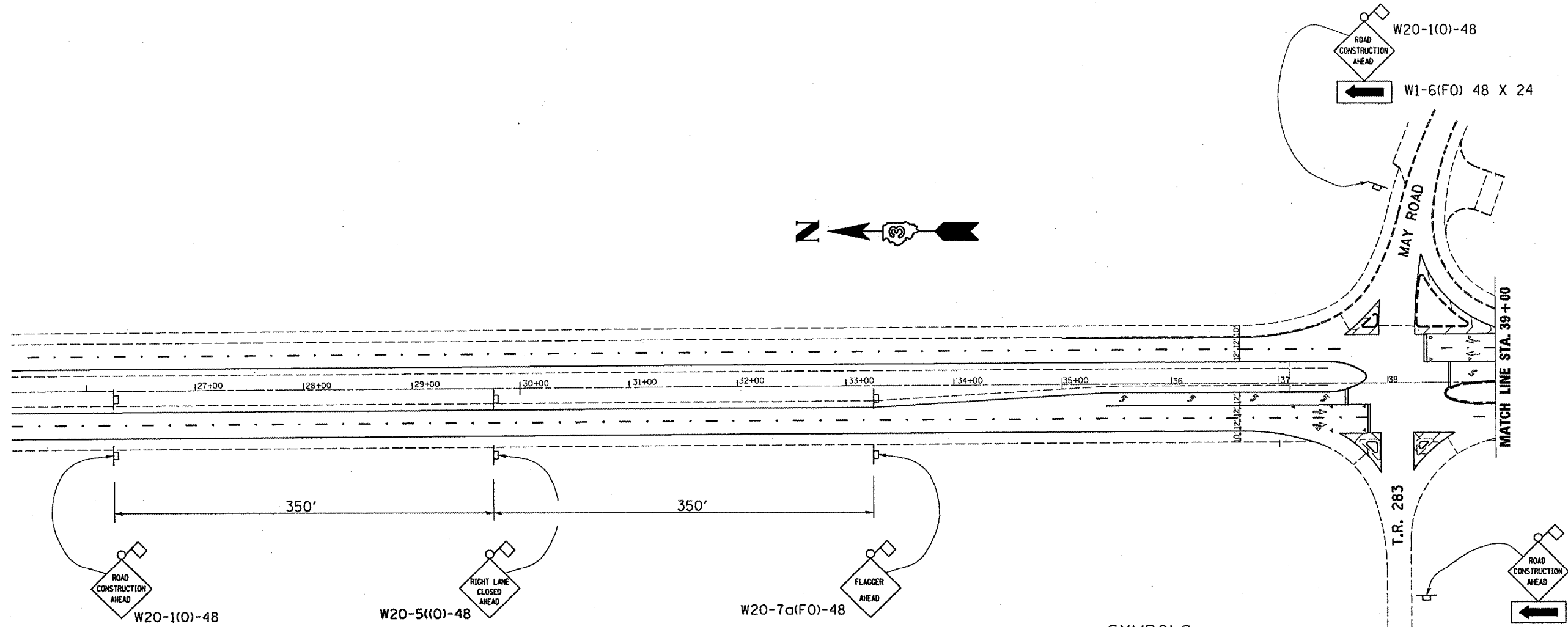


F.A.I. RTE.	SECTION	COUNTY	TOTAL SHEETS	SHEET NO.
80	(50-2HB)I-1	LASALLE	26	19
		ILLINOIS	STATE PROJECT	



SYMBOLS

- Work area
- Sign
- Type III barricades or drums with steady burning monodirectional light
- Drums with steady burning monodirectional light @ 25' cts.
- Arrow Board



REVISIONS	
NAME	DATE

ILLINOIS DEPARTMENT OF TRANSPORTATION
STAGING DETAILS FOR TRAFFIC CONTROL
STAGE I
 IL ROUTE 251 OVER INTERSTATE ROUTE 80
 F.A.I. ROUTE 80 SECTION (50-2HB)I-1
 LASALLE COUNTY
 STATION 589+41.10

DATE 01/17/2006 DRAWN BY RLW

NOTE: Use this sheet with Traffic Control and Protection Standard 701601

DATE: 01/17/2006
 c:/projects/cmln07/cm305/details.dgn