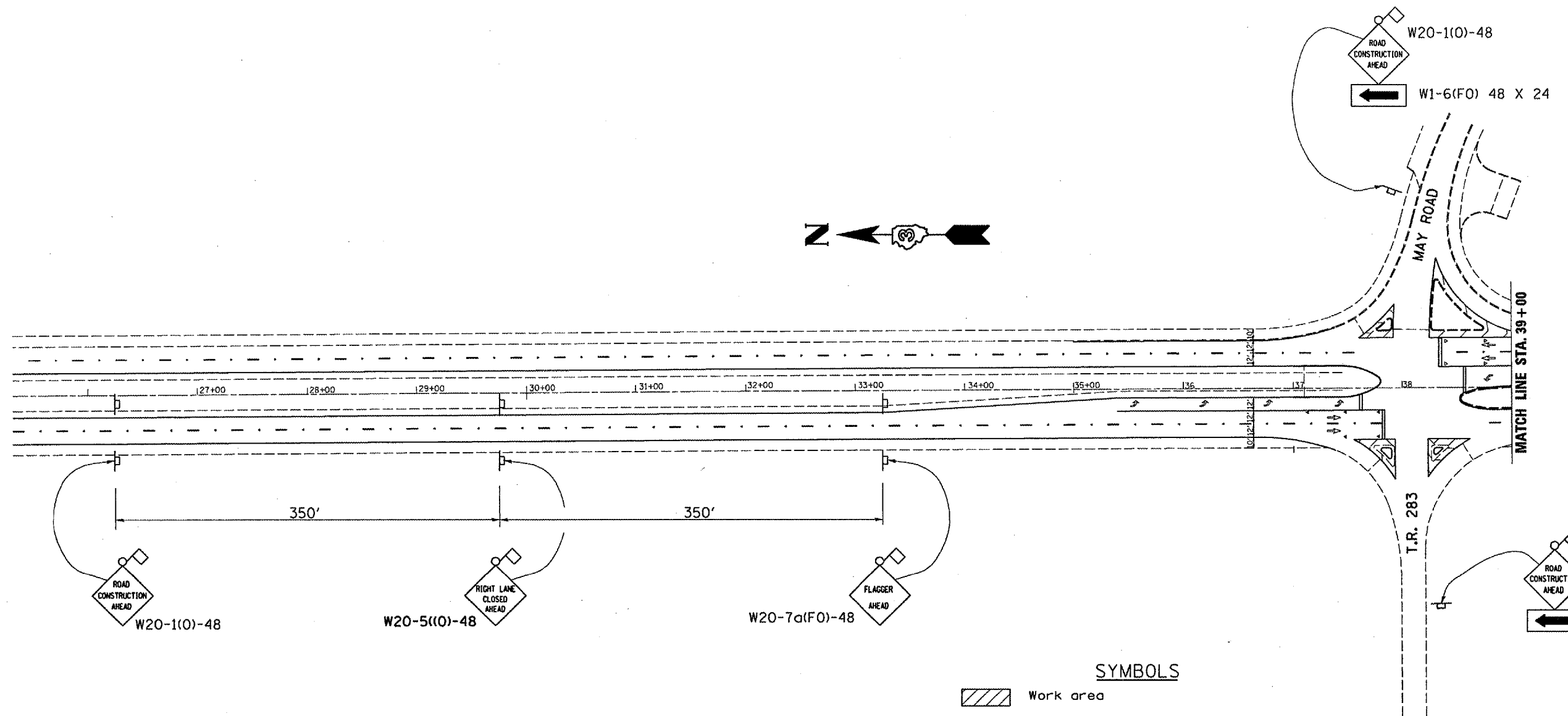
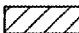






F.A.I. RTE.	SECTION	COUNTY	TOTAL SHEETS	SHEET NO.
80	(50-2HB)I-1	LASALLE	26	22
		ILLINOIS	STATE PROJECT	



**SYMBOLS**

-  Work area
-  Sign
-  Type III barricades or drums with steady burning monodirectional light
-  Drums with steady burning monodirectional light @ 25' cts.
-  Arrow Board



REVISIONS	DATE

ILLINOIS DEPARTMENT OF TRANSPORTATION  
**STAGING DETAILS FOR TRAFFIC CONTROL  
 STAGE II**  
 IL ROUTE 251 OVER INTERSTATE ROUTE 80  
 F.A.I. ROUTE 80 SECTION (50-2HB)I-1  
 LASALLE COUNTY  
 STATION 569+41.10  
 DATE 01/17/2006 DRAWN BY RLW

NOTE: Use this sheet with Traffic Control and Protection Standard 701601

DATE: 01/17/2006  
 c:/projects/cmain07/cm305/details.dgn