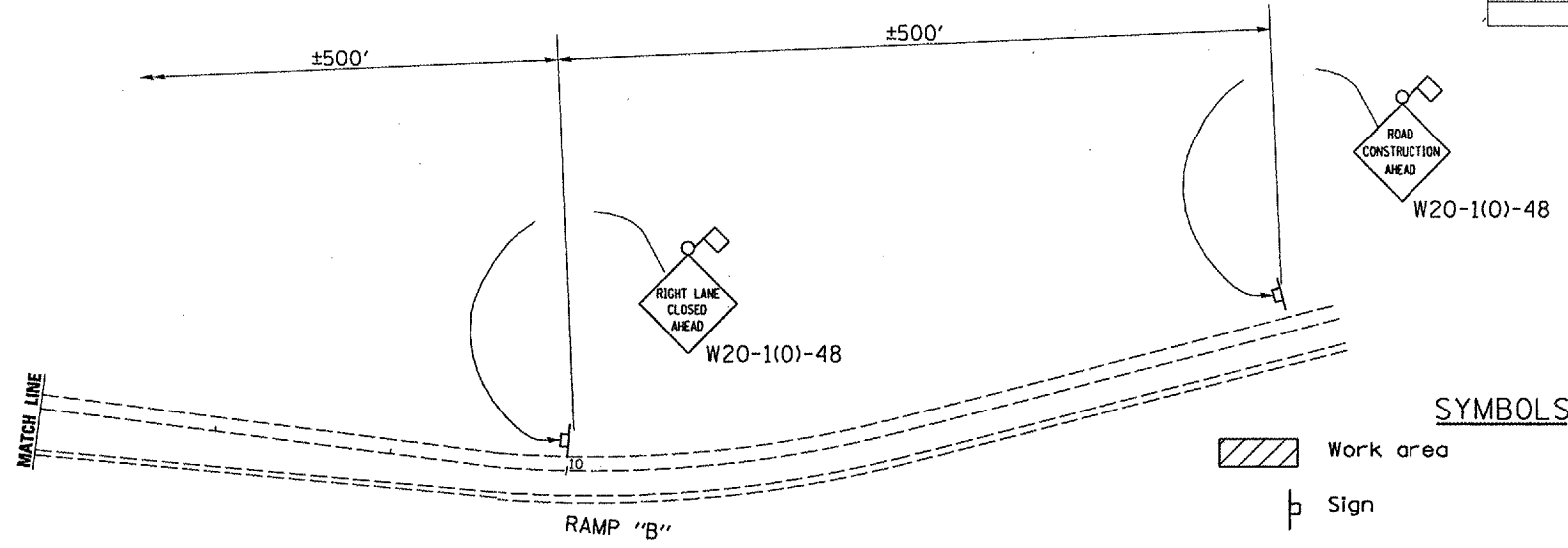
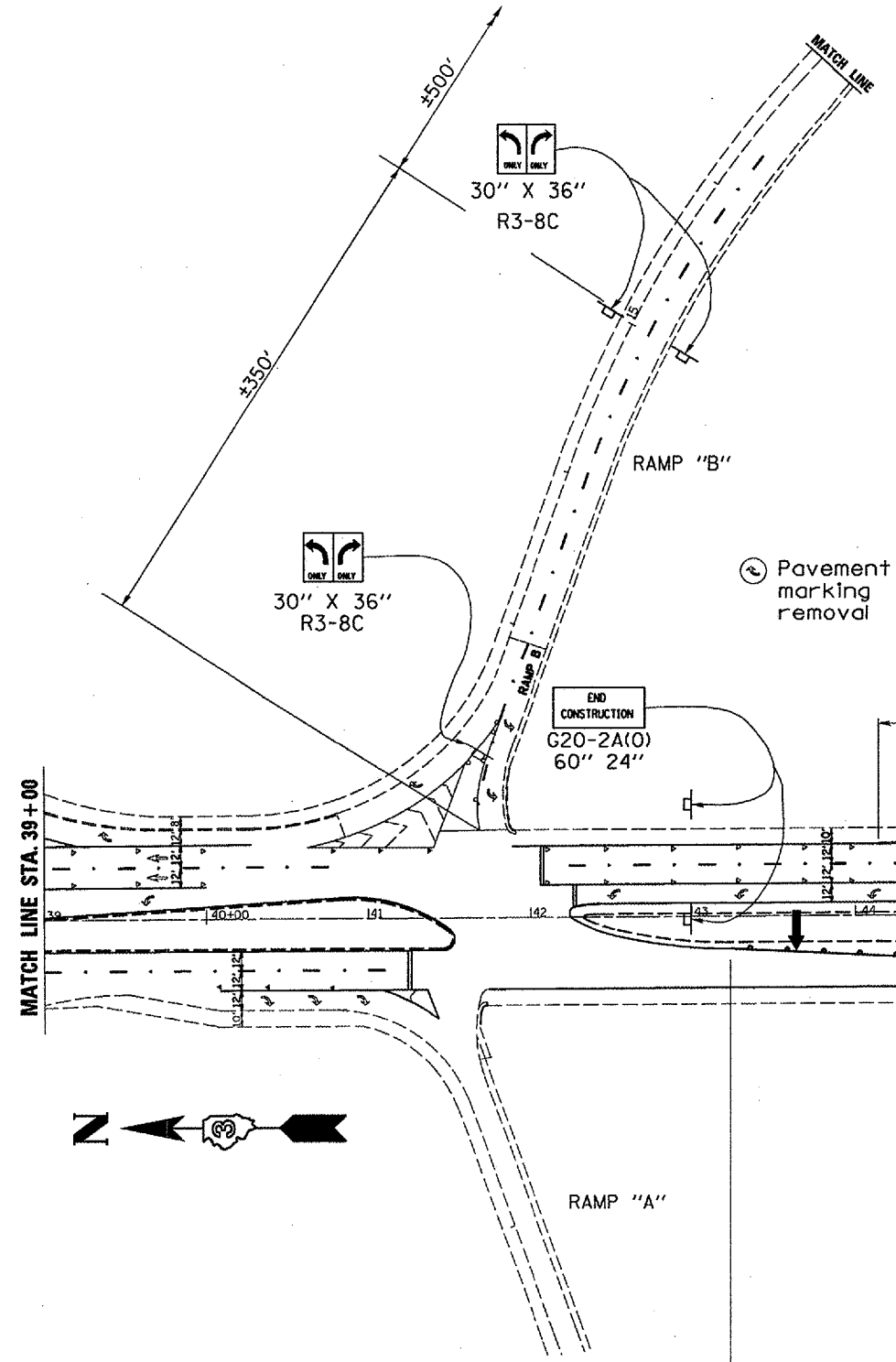


| F.A.I. PLAN | SECTION     | COUNTY   | TOTAL SHEETS  | SHEET NO. |
|-------------|-------------|----------|---------------|-----------|
| 80          | (50-2HB)I-1 | LASALLE  | 26            | 23        |
|             |             | ILLINOIS | STATE PROJECT |           |



**SYMBOLS**

- Work area
- Sign
- Type III barricades or drums with steady burning monodirectional light
- Drums with steady burning monodirectional light @ 25' cts.
- Arrow Board



END CONSTRUCTION  
G20-2A(0)  
60" 24"

Pavement marking removal

Temporary Pavement Marking Line 4" (White)

Temporary Pavement Marking Line 4" (White)

Pavement marking removal

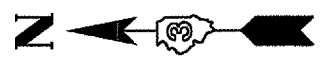
Temporary Pavement Marking Line 4" (White)

Pavement marking removal

END CONSTRUCTION  
G20-2A(0)  
60" 24"

MATCH LINE STA. 39+00

MATCH LINE STA. 54+00



DATE: 01/17/2006  
c:/projects/cmain07/cm305/details.dgn

| REVISIONS |      |
|-----------|------|
| NAME      | DATE |
|           |      |
|           |      |
|           |      |
|           |      |
|           |      |
|           |      |
|           |      |
|           |      |
|           |      |
|           |      |

ILLINOIS DEPARTMENT OF TRANSPORTATION  
**STAGING DETAILS FOR TRAFFIC CONTROL STAGE II**  
IL ROUTE 251 OVER INTERSTATE ROUTE 80  
F.A.I. ROUTE 80 SECTION (50-2HB)I-1  
LASALLE COUNTY  
STATION 569+41.10

