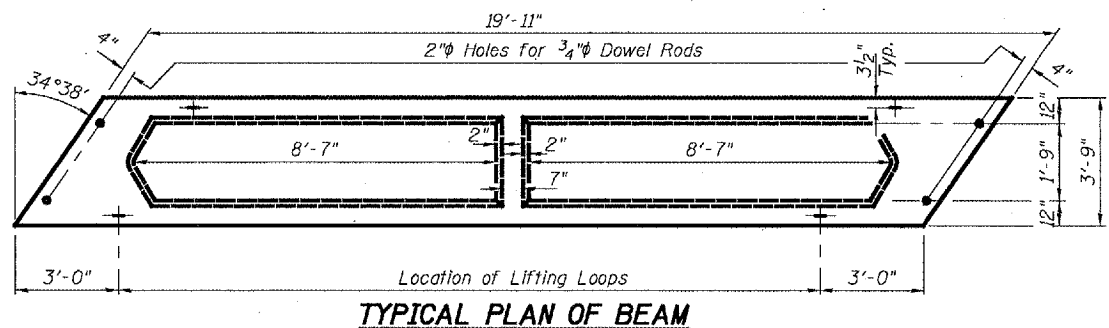


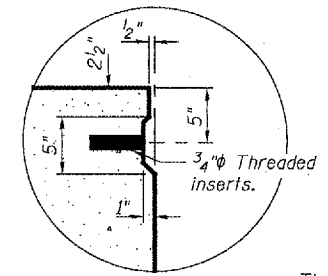
STATE OF ILLINOIS
DEPARTMENT OF TRANSPORTATION

Note:
Tack welding of stirrups to bottom longitudinal reinforcement bars will not be permitted except as otherwise authorized in writing by the Engineer.

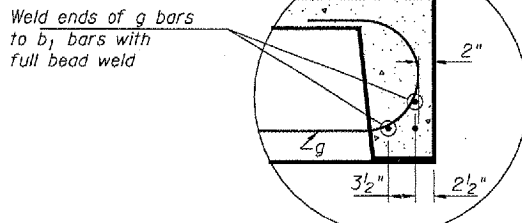
ROUTE NO.	SECTION	COUNTY	TOTAL SHEETS	SHEET NO.
		Tozwell	14	3
SHEET NO. 3 11 SHEETS				



TYPICAL PLAN OF BEAM



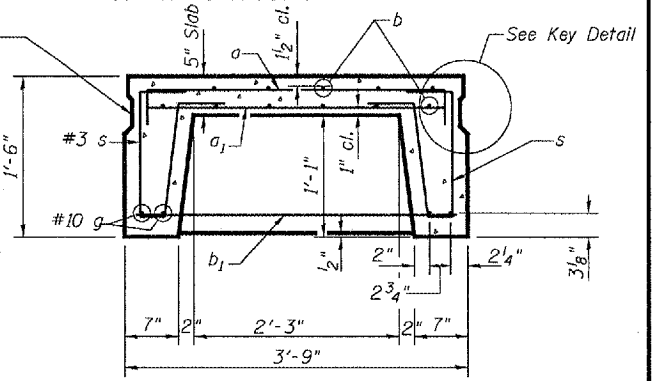
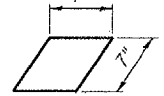
KEY DETAIL



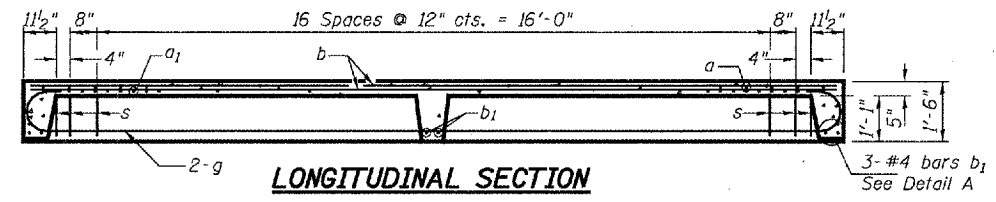
DETAIL A

The surface of the member shall not deviate more than 1/1200 of the full length of the member from a straight line connecting the two end points on the member's surface. In addition to State inspection and prior to erection, the beam shall be approved by the resident Engineer at the jobsite. The units shall remain on the bottom supporting forms until the concrete has attained a compressive strength of not less than 3,500 pounds per square inch.

BEARING PADS
(16 Required)

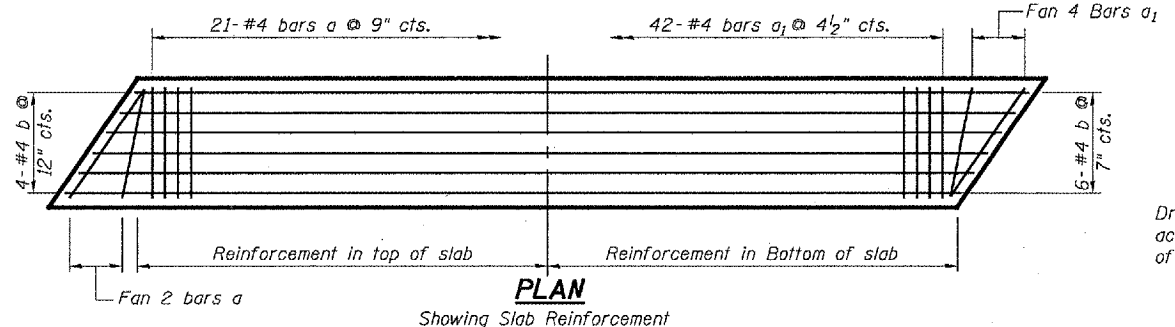


TYPICAL SECTION THRU BEAM



LONGITUDINAL SECTION

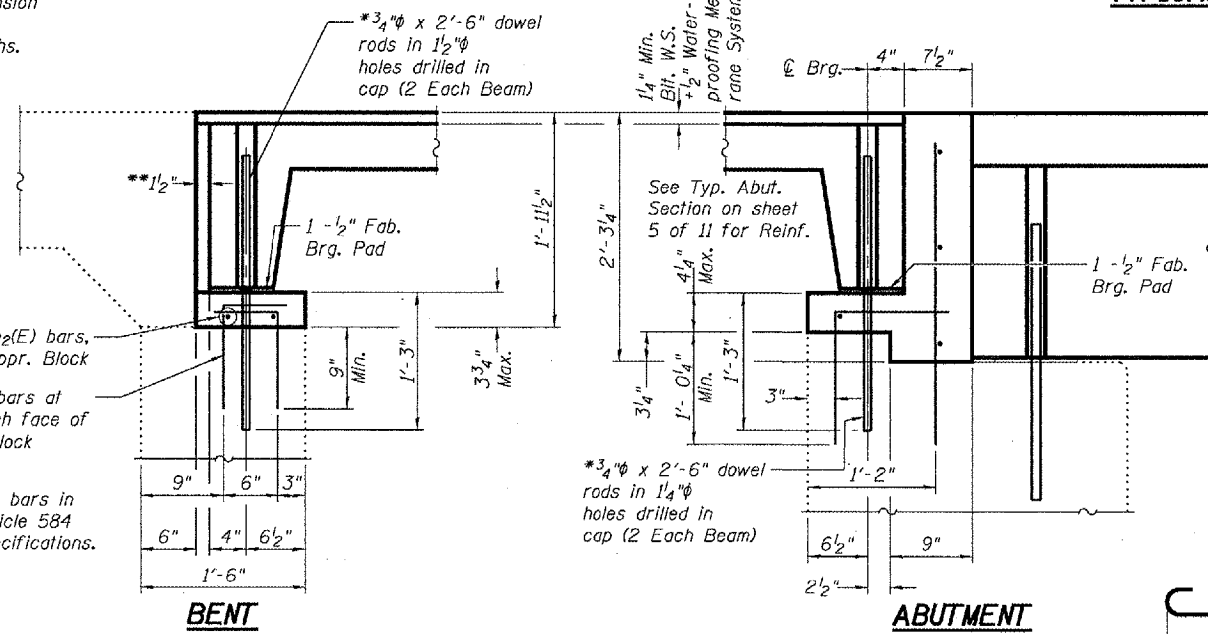
**Joint shall be filled with non-shrink grout. Dimension may vary to accommodate tolerance in beam lengths.



PLAN

Showing Slab Reinforcement

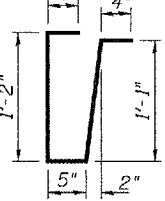
Drill and grout v2(E) bars in accordance with Article 584 of the Standard Specifications.



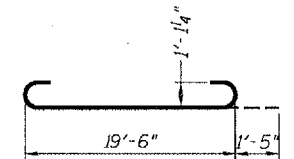
TYPICAL SECTION AT OUTSIDE FACE OF APPROACH BEAM

(Dimensions Shown are at Rt. L's to Abutment / Approach Cap)
(See Typical Abutment Sections at @ Roadway for Information not Shown)

BAR v2(E)



BAR s

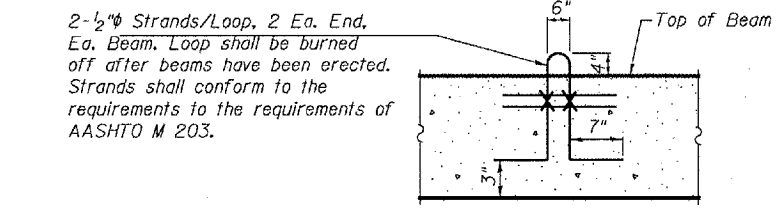


BAR g

BILL OF MATERIAL

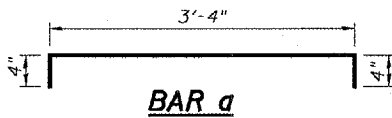
Bar	No.	Size	Length	Shape
h2(E)	8	#4	4'-9"	—
v2(E)	40	#4	1'-6"	L
Precast Concrete Bridge Slab			Sq. Ft.	299
Reinforcement Bars, Epoxy Coated			Pound	70
Removal of Existing Precast Unit			Sq. Ft.	299
Concrete Structures			Cu. Yd.	0.3

APPROACH DETAILS
IL 122 / SUGAR CREEK
TAZEWELL COUNTY
SN 090-0058

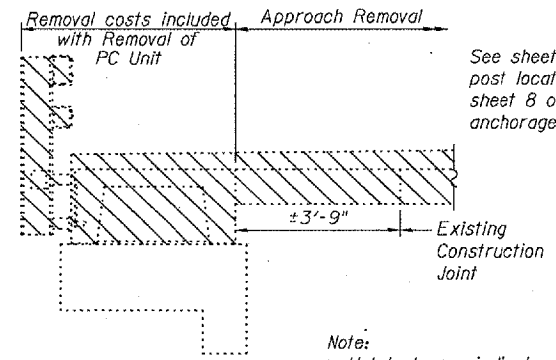


LIFTING LOOP

Approved alternate may be substituted for the above.

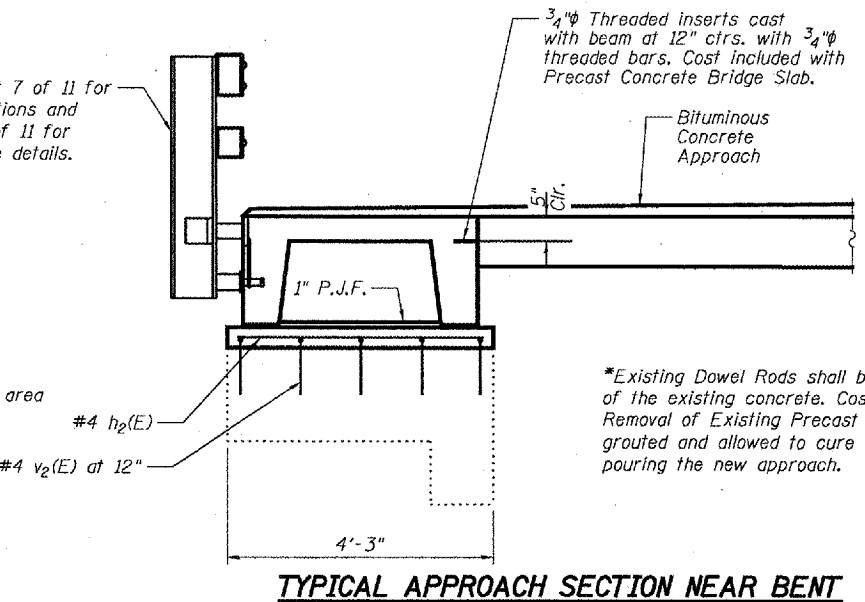


BAR a



TYPICAL APPROACH REMOVAL SECTION

Note:
Hatched area indicates area of approach removal.



TYPICAL APPROACH SECTION NEAR BENT

*Existing Dowel Rods shall be burned off flush with the top of the existing concrete. Cost to be included in the cost of Removal of Existing Precast Unit. New Dowel Rods shall be grouted and allowed to cure a minimum of 24 hours prior to pouring the new approach.

DESIGNED	P.S.J.
CHECKED	S.J.B.
DRAWN	Drew Christopher
CHECKED	P.S.J. S.J.B.

APPROVED	April 24, 2006
EXAMINED	John A. Morris ENGINEER OF STRUCTURAL SERVICES
PASSED	Ralph E. Anderson ENGINEER OF BRIDGES AND STRUCTURES