

STATE OF ILLINOIS
DEPARTMENT OF TRANSPORTATION

ROUTE NO.	SECTION	COUNTY	TOTAL SHEETS	SHEET NO.
		Tazewell		17
FED. ROAD DIST. NO. 7	ILLINOIS	FED. AID PROJECT		

SHEET NO. 6
11 SHEETS

Contract Number: 68484

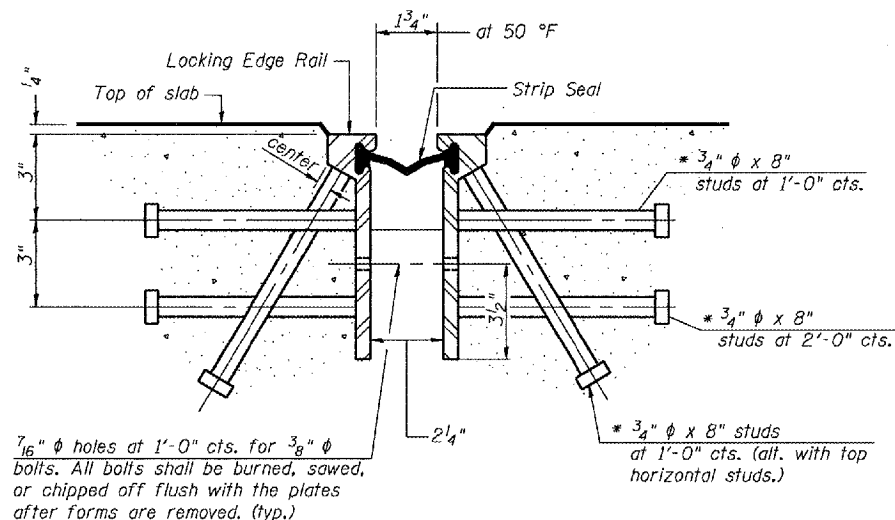
GENERAL NOTES

The strip seal shall be made continuous and shall have a minimum thickness of 1/4". The configuration of the strip seal shall match the configuration of the Locking Edge Rails.

The height and thickness of the Locking Edge Rails shown are minimum dimensions. The actual configuration of the Locking Edge Rails and matching strip seal may vary from manufacturer to manufacturer. Flanged edge rails will not be allowed.

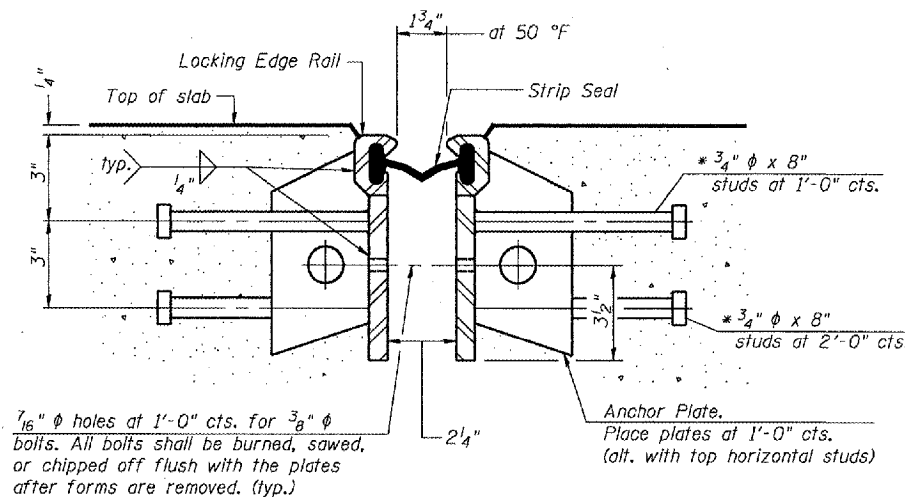
Locking Edge Rails may be spliced at slope discontinuities and stage construction joints.

The manufacturer's recommended installation methods shall be followed.



SECTION THRU ROLLED RAIL EXP. JOINT

(198 Studs Required)

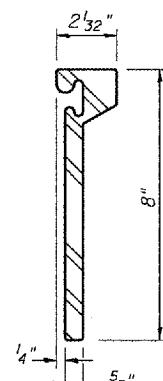


SECTION THRU WELDED RAIL EXP. JOINT

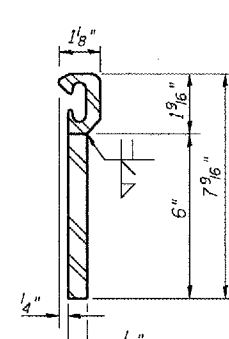
(118 Studs Required)
(80 Anchor Plates Required)

* Granular or solid flux filled headed studs conforming to Article 1006.32 of the Std. Specs., automatically end welded.

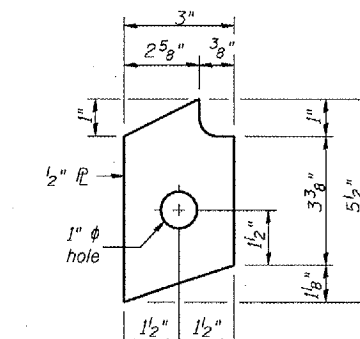
Strip Seal Expansion Joint	
Design Movement	Required Strip Seal Rated movement
1 5/8"	2"



ROLLED (EXTRUDED) RAIL

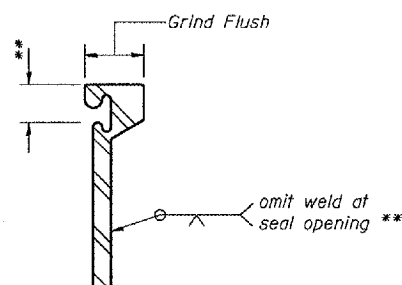


WELDED RAIL



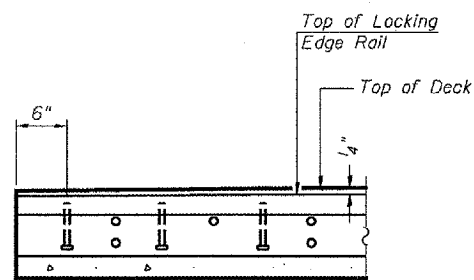
ANCHOR PLATE
(for welded rail)

LOCKING EDGE RAILS



LOCKING EDGE RAIL SPLICE

The inside of the locking edge rail groove shall be free of weld residue.



TYPICAL END TREATMENT

BILL OF MATERIAL

Item	Unit	Total
Preformed Joint Strip Seal	Foot	40

DESIGNED	P.S.J.	APPROVED	April 24, 2006
CHECKED	S.J.B.	EXAMINED	John A. Morris ENGINEER OF STRUCTURAL SERVICES
DRAWN	Drew Christopher	PASSED	Ralph E. Anderson ENGINEER OF BRIDGES AND STRUCTURES
CHECKED	P.S.J. S.J.B.		

STRIP SEAL JOINT DETAILS
IL 122 / SUGAR CREEK
TAZEWELL COUNTY
SN 090-0058