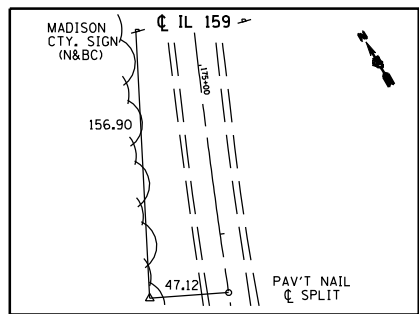
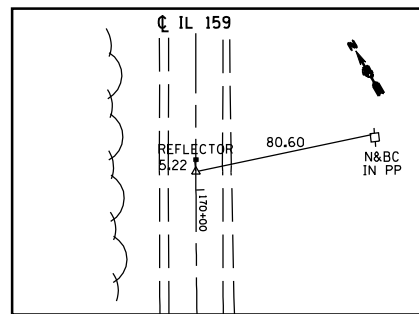


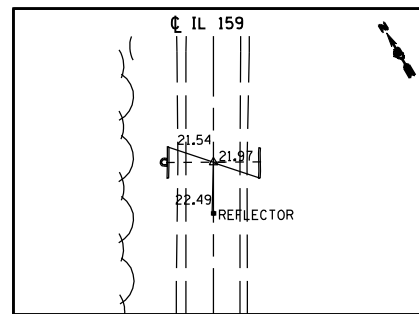
F.A.P. RTE.	SECTION	COUNTY	TOTAL SHEETS	SHEET NO.
*	**	MACOUPIN	231	23
STA.		TO STA.		
FED. ROAD DIST. NO.		ILLINOIS FED. AID PROJECT		
* FAP 325 & FAP 604				
** 14R; 116RS-2; 116RS-4; 101RS-2				



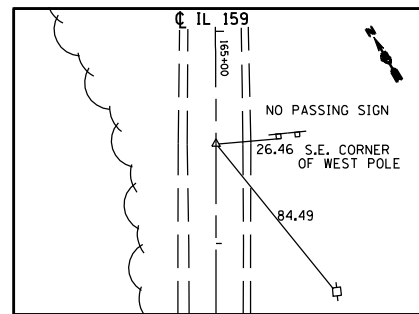
PI #138 STA. 176+34.71
(SET #4 REBAR W/CAP)
BURIED 16"



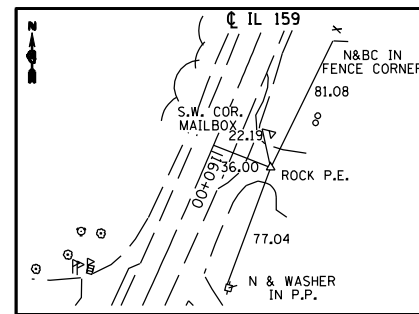
PC #138 STA. 169+91.91
(PK N IN CHSLD. "X")



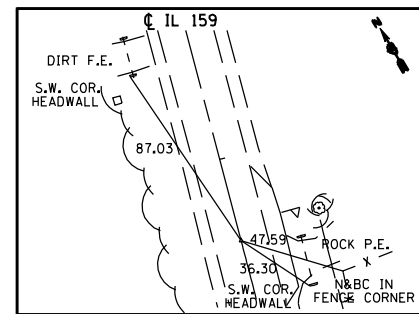
POT #137 STA. 168+00
(PK N&BC IN CHSLD. "X")



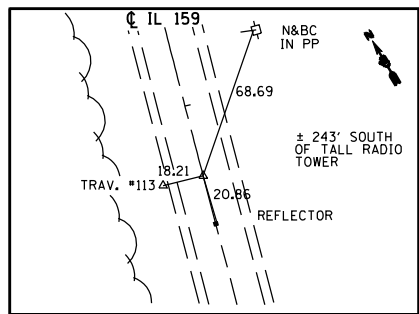
PT #136 STA. 165+49.56 =
POT #136 STA. 165+56.00
(PK N IN CHSLD. "X")



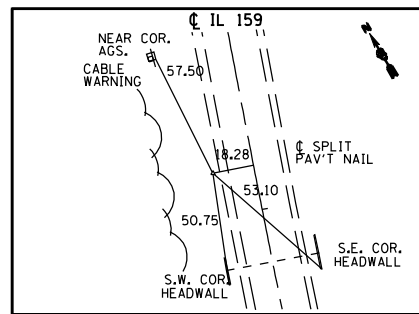
PI #136 STA. 159+96.40
(#4 REBAR W/CAP)
BURIED 11"



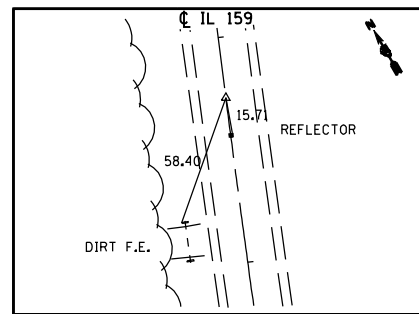
PC #136 STA. 154+37.06
(PK NAIL IN CHSLD. "X")



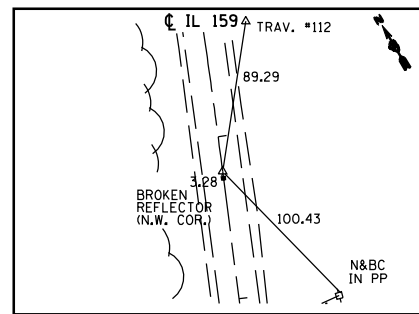
PT #412 STA. 124+31.79 =
POT #1412 STA. 124+36.47
(PK NAIL IN CHSLD. "X")



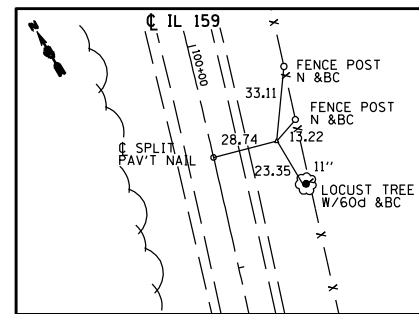
PI #412 STA. 118+80.06
(#4 REBAR W/CAP)
BURIED 12"



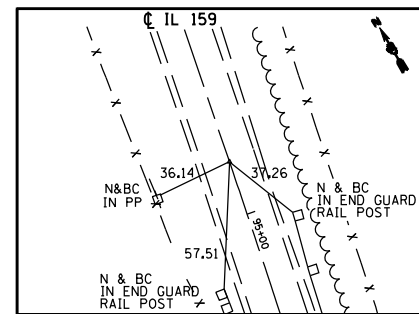
PC #412 STA. 113+26.79
(PK NAIL IN CHSLD. "X")



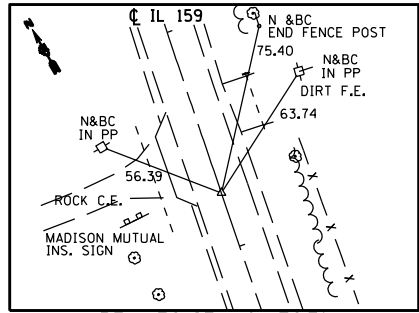
PT #135 STA. 106+20.58 =
POT #1135 STA. 106+24.40
(PK N IN CHSLD. "X")



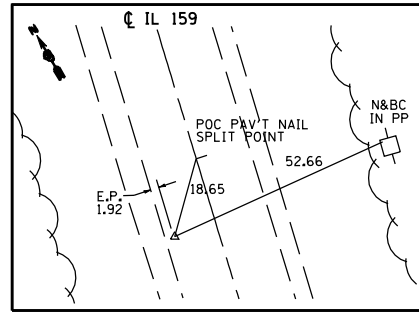
PI #135 STA. 100+50.00
(#4 REBAR W/CAP)
BURIED 11"



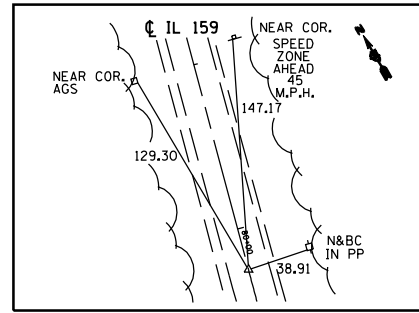
PC #135 STA. 94+75.58
(PK N&BC IN CHSLD. "X")



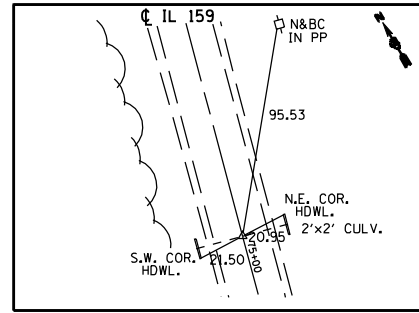
PT #134 STA. 91+74.78 =
POT #1134 STA. 91+75.20
(PK N&BC IN CHSLD. "X")



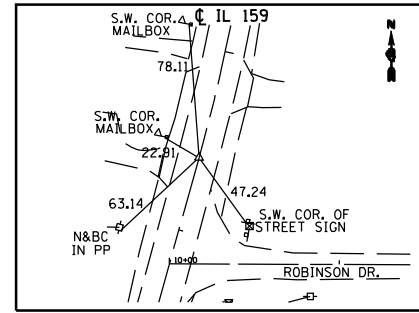
PI #134 STA. 86+00.00
(PK N&BC IN CHSLD. "X")



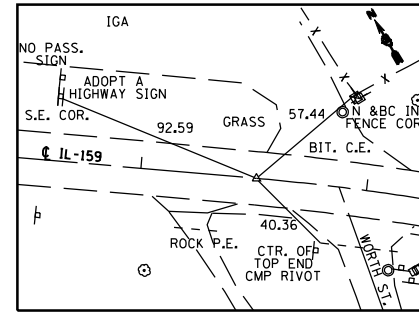
PC #134 STA. 80+24.78
(PK N&BC IN CHSLD. "X")



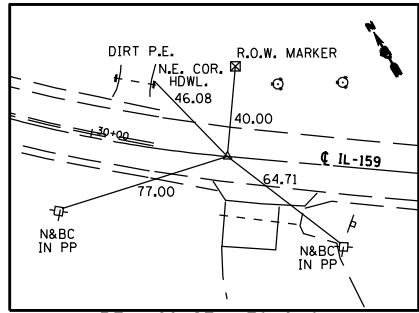
POT #133 STA. 75+00.00
(PK N&BC IN CHSLD. "X")



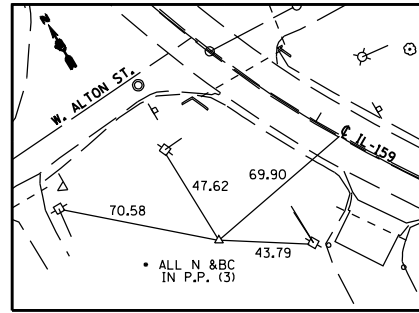
PT #131 STA. 51+64.30 =
POT #1131 STA. 53+55.92
(PK N&BC IN CHSLD. "X")



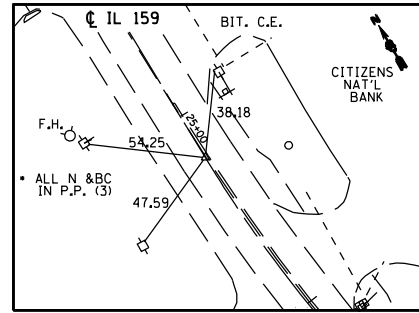
PC #131 STA. 38+51.20
(PK N&BC IN CHSLD. "X")



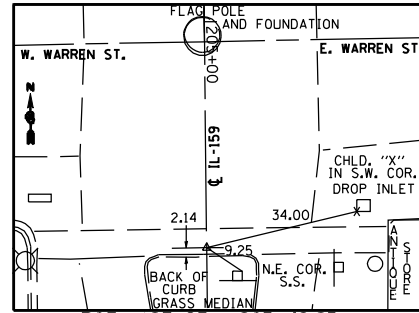
PT #129 STA. 30+61.01 =
POT #1129 STA. 31+09.65
(PK NAIL IN CHSLD. "X")



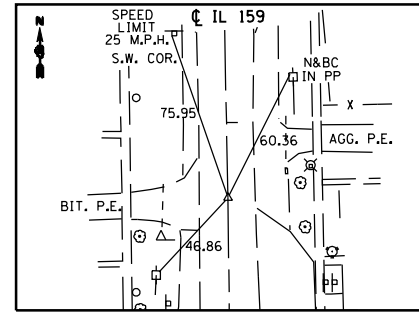
PI #129 STA. 28+12.93
(#4 REBAR W/CAP)
BURIED 11"



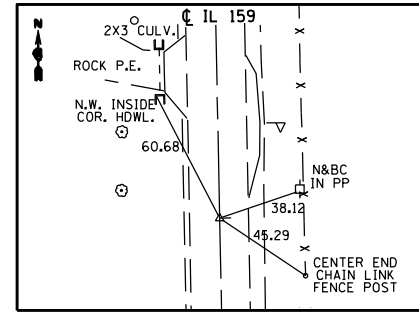
PC #129 STA. 25+21.31
(PK N&BC IN CHSLD. "X")



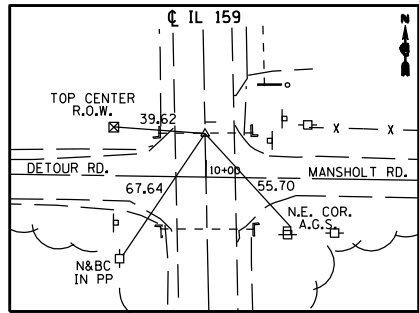
POT #127 STA. 205+49.85 =
POT #1127 STA. 0+00.00
(PK N&BC IN CHSLD. "X")



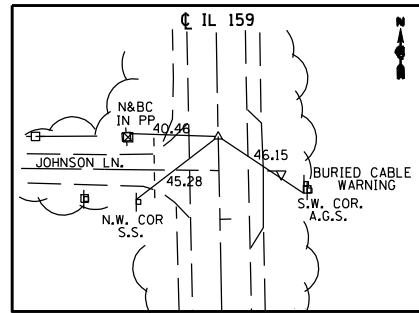
POT #126 STA. 199+33.11
(PK N&BC IN CHSLD. "X")



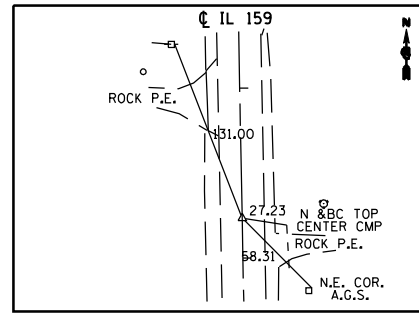
POT #130 STA. 176+00.00
(PK N&BC IN CHSLD. "X")



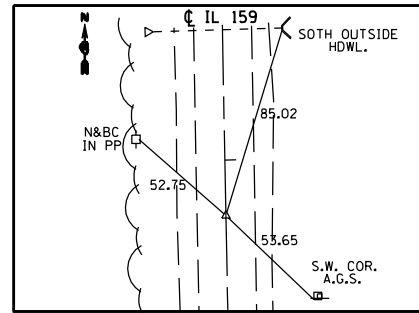
POT #125 STA. 153+05.00
(PK N&BC IN CHSLD. "X")



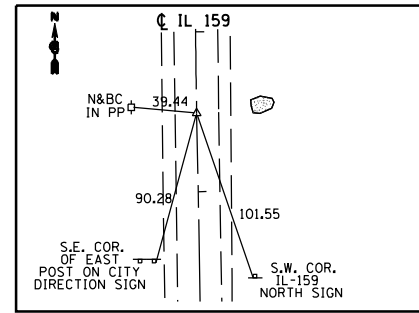
POT #124 STA. 126+63.50
(PK N&BC IN CHSLD. "X")



POT #280 STA. 117+76.48
(PK N&BC IN CHSLD. "X")



POT #2120 STA. 1304+24.50 =
POT #1120 STA. 104+01.66
(PK N&BC IN CHSLD. "X")



PT #118 STA. 1293+48.10 =
POT #1118 STA. 1293+53.91
(PK N&BC IN CHSLD. "X")

REVISIONS	
NAME	DATE

ILLINOIS DEPARTMENT OF TRANSPORTATION
CROSS TIES & BENCHMARKS
FAP 325 (IL 16) & FAP 604 (IL 159)
SECTION 14R; 116RS-2; 116RS-4; 101RS-2
MACOUPIN COUNTY

SCALE: VERT. DRAWN BY
DATE HORIZ. CHECKED BY