

F.A.P. RTE.	SECTION	COUNTY	TOTAL SHEETS	SHEET No.
315	34-5	HANCOCK	612	92
STA. 1352+00		TO STA. 1366+00		
FED. ROAD DIST. No.		ILLINOIS	FED. AID PROJECT	

NOTE:

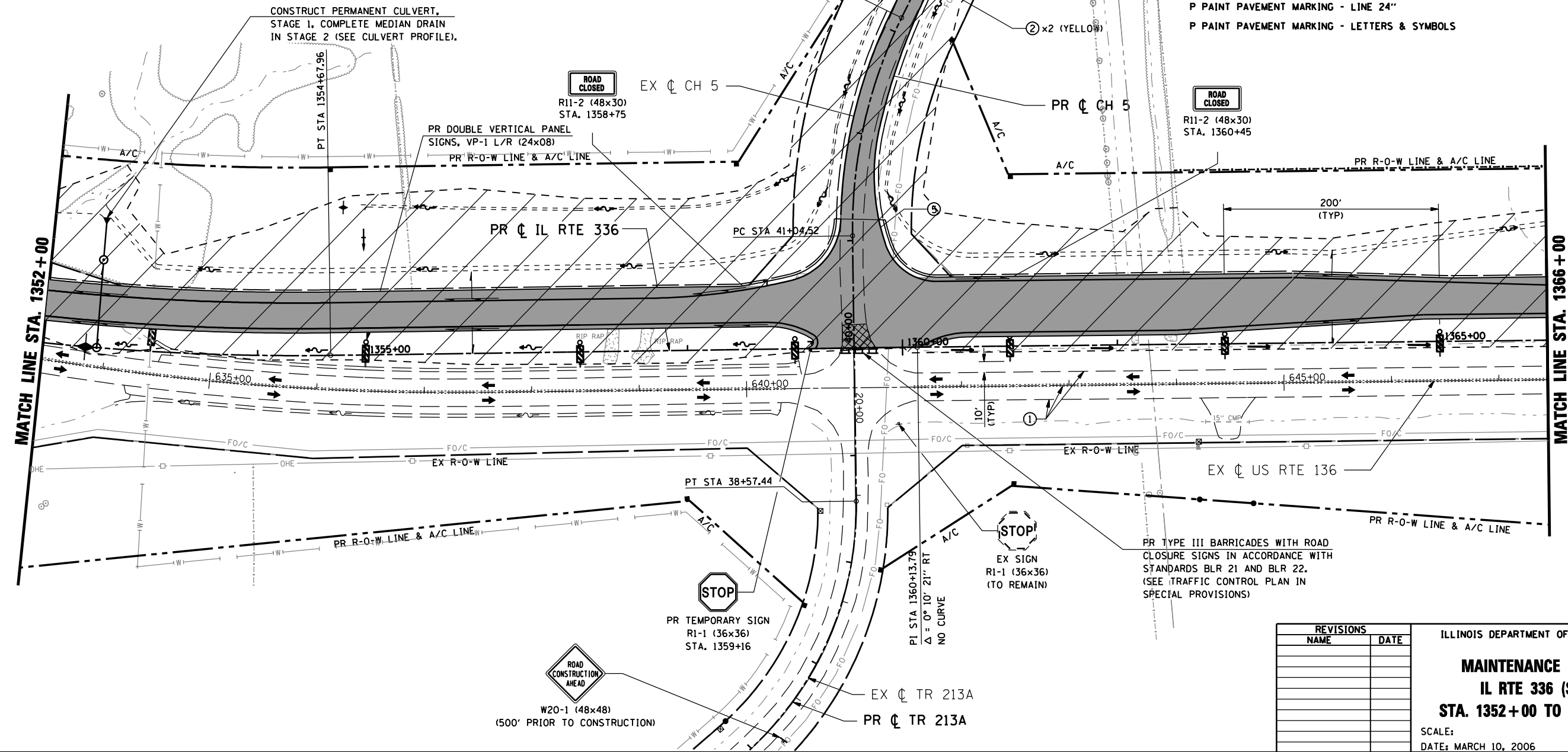
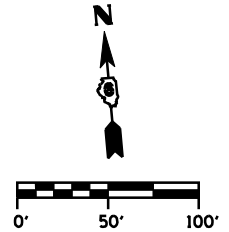
- FOR C.H. 5 CLOSURE, PROVIDE TRAFFIC CONTROL AND PROTECTION WITH STANDARDS 21 AND 22.

**IMPROVEMENT ENDS
CH 5
STA. 45+50**

PR TYPE III BARRICADES WITH ROAD CLOSURE SIGNS IN ACCORDANCE WITH STANDARDS BLR 21 AND BLR 22. (SEE TRAFFIC CONTROL PLAN IN SPECIAL PROVISIONS)

LEGEND

- SECTION OF TRAFFIC
- E III BARRICADE W/ PROPER ROAD CLOSURE SIGNS
- MANENT ROADWAY DITCH FLOW
- PROVARY STAGE DITCH FLOW
- STING ROADWAY DITCH FLOW
- GE CONSTRUCTION LIMITS
- GE CONSTRUCTION
- OVAL
- STING PAVEMENT MARKING
- P PAINT PAVEMENT MARKING - LINE 5"
- P PAINT PAVEMENT MARKING - LINE 6"
- P PAINT PAVEMENT MARKING - LINE 12"
- P PAINT PAVEMENT MARKING - LINE 24"
- P PAINT PAVEMENT MARKING - LETTERS & SYMBOLS



REVISIONS	
NAME	DATE

ILLINOIS DEPARTMENT OF TRANSPORTATION
**MAINTENANCE OF TRAFFIC
 IL RTE 336 (STAGE 1)
 STA. 1352+00 TO STA. 1366+00**
 SCALE: DATE: MARCH 10, 2006
 DRAWN BY: RG
 CHECKED BY: JAC

•DGN-SPEC•
 •DATE-TIME•
 •REF01

D6 PROJECT: FILE: