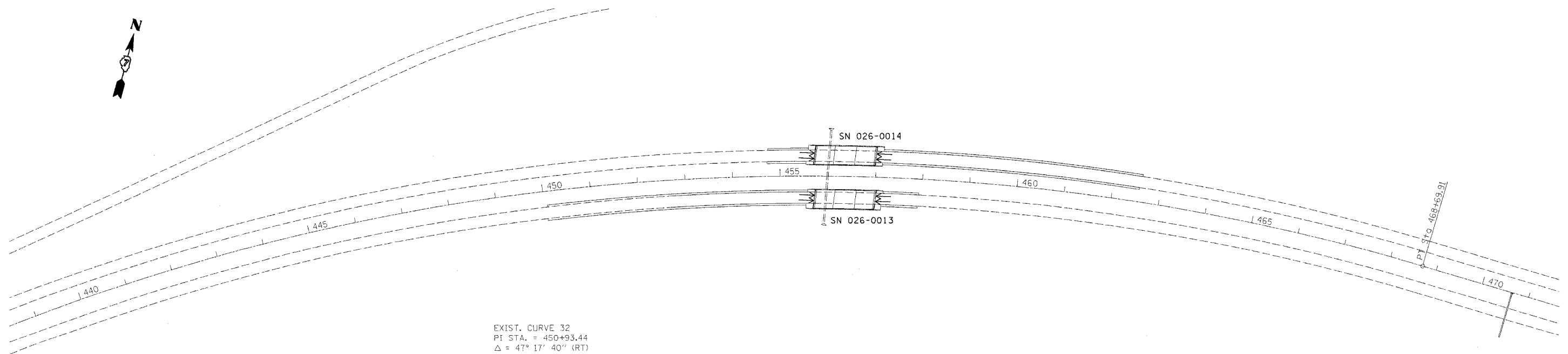
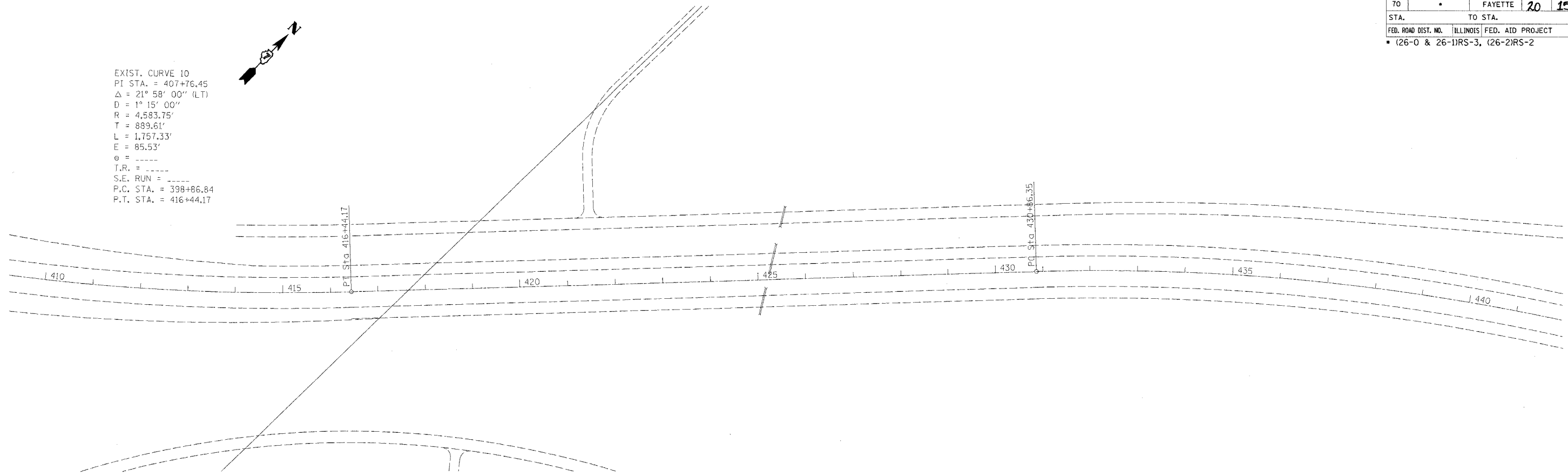
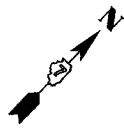


F.A.I. RTE.	SECTION	COUNTY	TOTAL SHEETS	SHEET NO.
70	.	FAYETTE	20	15
STA.		TO STA.		
FED. ROAD DIST. NO.		ILLINOIS FED. AID PROJECT		
• (26-0 & 26-1)RS-3, (26-2)RS-2				

district
10/24/2005
c:\projects\74061\d04104p.dgn
PS @

EXIST. CURVE 10
PI STA. = 407+76.45
 $\Delta = 21^\circ 58' 00''$ (LT)
D = $1^\circ 15' 00''$
R = 4,583.75'
T = 889.61'
L = 1,757.33'
E = 85.53'
e = -----
T.R. = -----
S.E. RUN = -----
P.C. STA. = 398+86.84
P.T. STA. = 416+44.17



EXIST. CURVE 32
PI STA. = 450+93.44
 $\Delta = 47^\circ 17' 40''$ (RT)
D = $1^\circ 15' 00''$
R = 4,583.75'
T = 2,007.09'
L = 3,783.56'
E = 420.17'
e = -----
T.R. = -----
S.E. RUN = -----
P.C. STA. = 430+86.35
P.T. STA. = 468+69.91

PLOT DATE = 10/24/2005
FILE NAME = 41015.dwg
PLOT SCALE = 1/8"=1'-0"
USER NAME = district

REVISIONS	
NAME	DATE

ILLINOIS DEPARTMENT OF TRANSPORTATION
**STATION 410+00
TO
STATION 470+00**
SCALE: VERT. DATE: HORIZ. DRAWN BY: CHECKED BY: