

district
10/24/2005
c:\projects\74061\d04104p.dgn

F.A.I. RTE.	SECTION	COUNTY	TOTAL SHEETS	SHEET NO.
70	*	FAYETTE	20	1

CONTRACT NO. 74061
• (26-0 & 26-1)RS-3,(26-2)RS-2

FOR INDEX OF SHEETS, SEE SHEET NO. 2

STATE OF ILLINOIS
DEPARTMENT OF TRANSPORTATION
DIVISION OF HIGHWAYS

**PROPOSED
HIGHWAY PLANS**

FAI ROUTE 70 (I-70)
SECTION (26-0 & 26-1)RS-3,(26-2)RS-2
PROJECT NO. IM-70-2 (229) 058
FAYETTE COUNTY

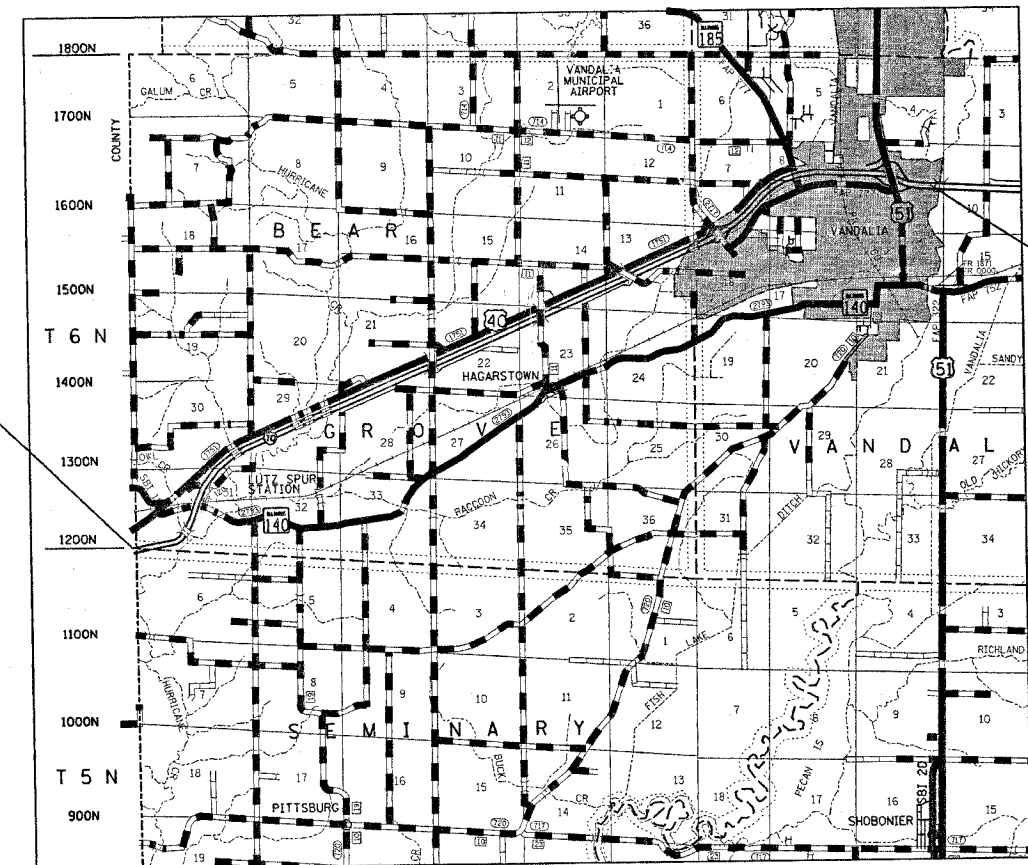
D-97-041-04



STATION EQUATION

3038+74.48 BK = 1505+44.20 AH
1610+33.67 BK = 90+55.19 AH
399+14.06 BK = 398+86.83 AH
519+40.32 BK = 519A+12.05 AH

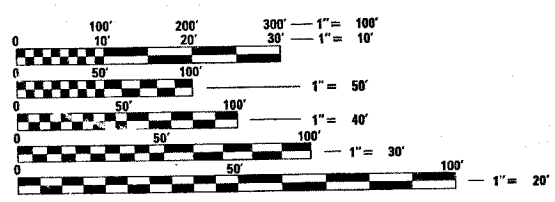
C-97-079-04



FAI ROUTE 70
FAYETTE COUNTY
PROJECT ENDS
STA 538+33

FAI ROUTE 70
FAYETTE COUNTY
PROJECT BEGINS
STA 3033+80

ADT (2004) = 22,400



FULL SIZE PLANS HAVE BEEN PREPARED USING STANDARD ENGINEERING SCALES. REDUCED SIZED PLANS WILL NOT CONFORM TO STANDARD SCALES. IN MAKING MEASUREMENTS ON REDUCED PLANS, THE ABOVE SCALES MAY BE USED.

J.U.L.I.E.
JOINT UTILITY LOCATION INFORMATION FOR EXCAVATION
1-800-892-0123

STATE OF ILLINOIS
DEPARTMENT OF TRANSPORTATION
DIVISION OF HIGHWAYS

SUBMITTED Oct 25 20 05
Christine M. Reed
DEPUTY DIRECTOR OF HIGHWAYS, REGION ENGINEER

May 12 20 06
Mike Hene
ENGINEER OF DESIGN AND ENVIRONMENT

May 13 20 06
Milton R. Sees, P.E.
DIRECTOR OF HIGHWAYS, CHIEF ENGINEER

**PRINTED BY THE AUTHORITY
OF THE STATE OF ILLINOIS**

PROJECT ENGINEER : BILL STANLEY
SQUAD LEADER : JENNIFER WENTHE
DESIGNER : JENNIFER WENTHE
TELEPHONE : 217/342-3951 EX 361

CONTRACT NO. 74061 TOWNSHIP : GROVE, VANDALIA

GROSS LENGTH = 55829 FEET = 10.57 MILES
NET LENGTH = 54515 FEET = 10.32 MILES

F.A.I. RTE.	SECTION	COUNTY	TOTAL SHEETS	SHEET NO.
TO	•	FAYETTE	20	2
STA.	TO STA.			
FED. ROAD DIST. NO.	ILLINOIS FED. AID PROJECT			
• (26-0 & 26-1)RS-3, (26-2)RS-2				

GENERAL NOTES

THIS SECTION SHALL BE CONSTRUCTED IN ACCORDANCE WITH THE PLANS, THE "STANDARD SPECIFICATIONS FOR ROAD AND BRIDGE CONSTRUCTION", ADOPTED JANUARY 1, 2002; THE "SUPPLEMENTAL SPECIFICATIONS AND RECURRING SPECIAL PROVISIONS" INDICATED ON THE CHECK SHEET, AND THE "SPECIAL PROVISIONS" INCLUDED IN THE PROPOSAL.

THIS PROJECT IS LOCATED ON I-70 FROM THE BOND/FAYETTE COUNTY LINE TO THE KASKASKIA RIVER EAST OF VANDALIA. THE WORK INCLUDED IN SECTION (26-0 & 26-1)RS-3, (26-2)RS-2 CONSISTS OF PAVEMENT PATCHING, BITUMINOUS SURFACE REMOVAL, BITUMINOUS RESURFACING, PAVEMENT MARKING, AND ANY OTHER WORK NECESSARY TO COMPLETE THIS PROJECT.

DIRECTION INDICATOR BARRICADES SHALL BE USED IN THE LANE CLOSURE TAPERS AS OUTLINED IN THE SUPPLEMENTAL SPECIFICATION FOR SECTION 702.

IF EXISTING CONCRETE PATCHES ARE ENCOUNTERED THEY SHALL BE MILLED WITH THE ADJACENT BITUMINOUS SURFACE REMOVAL. NO ADDITIONAL PAYMENT WILL BE ALLOWED.

PAVEMENT MARKING SHALL BE APPLIED IN ACCORDANCE WITH SECTION 780 OF THE STANDARD SPECIFICATIONS. SHORT TERM PAVEMENT MARKING SHALL BE APPLIED TO THE MILLED SURFACE, BITUMINOUS MATERIALS (PRIME COAT), LEVEL BINDER, AND BITUMINOUS SURFACE COURSE AS SPECIFIED IN SECTION 703 OF THE STANDARD SPECIFICATIONS. TEMPORARY TAPE SHALL BE USED ON THE SURFACE COURSE AND PAINT SHALL BE USED ON MILLED SURFACES.

PERMANENT PAVEMENT MARKING ON FAI 70 SHALL BE EPOXY PAVEMENT MARKING OR PREFORMED PLASTIC PAVEMENT MARKING OF THE SIZE AND TYPE SPECIFIED IN THE PAVEMENT MARKING SCHEDULE. THE QUANTITY OF PREFORMED PLASTIC PAVEMENT MARKING, TYPE B - LINE 6" WAS COMPUTED TO ALLOW FOR THE PLACEMENT OF A CENTERLINE FOR THE LENGTH OF THE PROJECT. ALL PREFORMED PLASTIC PAVEMENT MARKING TYPE B SHALL BE INSTALLED IN ACCORDANCE WITH THE REQUIREMENTS OF PREFORMED PLASTIC PAVEMENT MARKING TYPE A AS SPECIFIED IN ARTICLE 780.07(c) OF THE "STANDARD SPECIFICATIONS FOR ROAD AND BRIDGE CONSTRUCTION".

THE TOTAL QUANTITY OF EPOXY PAVEMENT MARKING - LINE 4" CONSISTS OF 109,139 FEET OF YELLOW AND 102,648 FEET OF WHITE.

THE TOTAL QUANTITY OF PREFORMED PLASTIC PAVEMENT MARKING, TYPE B - LINE 6" CONSISTS OF 27,284 FEET OF WHITE.

THE TOTAL QUANTITY OF EPOXY PAVEMENT MARKING - LINE 8" CONSISTS OF 670 FEET OF WHITE.

THE TOTAL QUANTITY OF EPOXY PAVEMENT MARKING - LINE 18" CONSISTS OF 48 FEET OF WHITE.

THE RAISED REFLECTIVE PAVEMENT MARKERS PLACED ON FAI 70 SHALL BE PLACED AS DOUBLE MARKERS AS SHOWN ON STANDARD 781001-02. THE TOTAL QUANTITY OF RAISED REFLECTIVE PAVEMENT MARKERS IS 2,726 ONE-WAY CRYSTAL.

THE CONTRACTOR SHALL USE EITHER RC-70 OR AN EMULSIFIED POLYMER PRIME SS-1HP FOR THE PAY ITEM BITUMINOUS MATERIALS (PRIME COAT).

THE CONTRACTOR SHALL PROVIDE INTERNET ACCESSIBILITY TO THE BITUMINOUS PLANT QUALITY CONTROL LAB SO THAT BITUMINOUS PLANT REPORTS CAN BE E-MAILED TO THE DISTRICT HEADQUARTERS. THIS WORK SHALL BE INCLUDED IN THE COST OF ALL BITUMINOUS ITEMS.

STRUCTURES 026-0011 (EB) AND 026-0012 (WB) SHALL BE MILLED 1 1/2" AND PAID FOR AT THE CONTRACT UNIT PRICE PER SQ YD FOR BITUMINOUS SURFACE REMOVAL 2".

A UNIFORMLY STRAIGHT SAW CUT SHALL BE MADE AT LOCATIONS WHERE PROPOSED NEW CONSTRUCTION WILL ABUT EXISTING BITUMINOUS CONCRETE SURFACES. THE SAW CUT SHALL BE MADE FULL DEPTH THROUGH THE EXISTING SURFACE. THIS WORK WILL BE CONSIDERED INCLUDED IN THE COST OF THE CONTRACT ITEMS INVOLVED AND NO EXTRA COMPENSATION WILL BE ALLOWED.

THE PAY ITEM TEMPORARY RAMP HAS BEEN INCLUDED FOR THE CONSTRUCTION OF TEMPORARY RAMPS IN ACCORDANCE WITH ARTICLE 406.18 OF THE STANDARD SPECIFICATIONS. THE CONTRACT UNIT PRICE PER SQUARE YARD FOR TEMPORARY RAMP SHALL INCLUDE BOTH THE INSTALLATION AND THE REMOVAL OF THE RAMPS.

THE RESIDENT ENGINEER SHALL BE THE SOLE JUDGE CONCERNING THE CURING TIME FOR THE VARIOUS BITUMINOUS LIFTS.

THE EXISTING PAVEMENT SHALL BE PATCHED IN ACCORDANCE WITH SECTION 442 OF THE "STANDARD SPECIFICATIONS FOR ROAD AND BRIDGE CONSTRUCTION". THE QUANTITIES OF PATCHING ARE ESTIMATES ONLY AND THE FINAL QUANTITIES AND PATCH LOCATIONS SHALL BE DETERMINED BY THE ENGINEER.

LONGITUDINAL REINFORCEMENT BARS IN CLASS A PATCHES SHALL BE #5 BARS AT 4 1/4" SPACING.

THE FOLLOWING MIXTURE REQUIREMENTS ARE APPLICABLE TO THIS PROJECT:

MIXTURE USE:	SURFACE COURSE (2")	PARTIAL DEPTH PATCHING
PG GRADE:	SBS PG 70-22	PG 64-22
RAP%:	0%	0%
DESIGN AIR VOIDS:	4.0% @ NDESIGN = 105	4% @ NDESIGN = 105
MIXTURE COMPOSITION:	IL-9.5	IL-19.0
FRICTION AGGREGATE:	MIXTURE D	N/A

THE FOLLOWING APPLICATION RATES HAVE BEEN USED IN CALCULATING PLAN QUANTITIES:

POLYMERIZED BITUMINOUS CONCRETE	112 LBS/SQ YD/IN
PARTIAL DEPTH PATCHING	112 LBS/SQ YD/IN
BITUMINOUS MATERIALS (PRIME COAT)	0.10 GALLON/SQ YD
AGGREGATE PRIME COAT	4.00 LBS/SQ YD

INDEX OF SHEETS

SHEET NO.	ITEM
1	COVER SHEET
2	INDEX OF SHEETS & GENERAL NOTES
3	SUMMARY OF QUANTITIES
4	TYPICAL SECTION
5	RESURFACING & PAVEMENT MARKING SCHEDULES
6	PATCHING DETAIL AND SCHEDULE
7-18	PLAN SHEETS
19	AERIAL SPEED ZONE CHECKS
20	GUIDELINES FOR INTERSTATE PAVEMENT MARKING

THE FOLLOWING STANDARDS ARE A PART OF THESE PLANS AND ARE INCLUDED AFTER SHEET NO. 20:

STD. NO.	DESCRIPTION
000001-04	STANDARD SYMBOLS, ABBREVIATIONS, AND PATTERNS
001001	AREAS OF REINFORCEMENT REBARS
442001-02	CLASS A PATCHES
701101-01	OFF-RD OPERATIONS, MULTILANE, 15' TO 24" FROM PAVEMENT EDGE
701400-02	APPROACH TO LANE CLOSURE, FREEWAY/EXPRESSWAY
701401-03	LANE CLOSURE FREEWAY/EXPRESSWAY
701406-04	LANE CLOSURE FREEWAY/EXPRESSWAY DAY OPERATIONS ONLY FOR SPEEDS >=45 MPH
701411-03	LANE CLOSURE, MULTILANE AT ENTRANCE OR EXIT RAMP, FOR SPEEDS >= 45 MPH
701426-02	LANE CLOSURE MULTILANE INTERMITTENT OR MOVING OPER. FOR SPEEDS >=45 MPH
702001-06	TRAFFIC CONTROL DEVICES
780001-01	TYPICAL PAVEMENT MARKINGS
781001-02	TYPICAL APPLICATIONS RAISED REFLECTIVE PAVEMENT MARKERS

REVISIONS	
NAME	DATE

ILLINOIS DEPARTMENT OF TRANSPORTATION

**GENERAL NOTES
&
INDEX OF SHEETS**

SCALE: VERT.
HORIZ.
DATE

DRAWN BY
CHECKED BY

F.A.I. RTE.	SECTION	COUNTY	TOTAL SHEETS	SHEET NO.
70		FAYETTE	20	3
STA.		TO STA.		
FED. ROAD DIST. NO.		ILLINOIS FED. AID PROJECT		
* (26-0 & 26-1)RS-3, (26-2)RS-2				

SUMMARY OF QUANTITIES

SUMMARY OF QUANTITIES			90% FED. 10% STATE TOTAL QUANTITIES	CONSTRUCTION TYPE CODE	
CODE NO	ITEM	UNIT		URBAN I000	RURAL I000
X0325431	CLASS A PATCHES, TYPE II, 17 1/2 INCH	SQ YD	446	419	27
X0325432	CLASS A PATCHES, TYPE III, 17 1/2 INCH	SQ YD	16	16	
X0325433	CLASS A PATCHES, TYPE IV, 17 1/2 INCH	SQ YD	547	547	
40600100	BITUMINOUS MATERIALS (PRIME COAT)	GALLON	30,316	8823	21,493
40600300	AGGREGATE (PRIME COAT)	TON	406	176	430
40600990	TEMPORARY RAMP	SQ YD	128	128	
44200620	CLASS A PATCHES, TYPE II, 14 INCH	SQ YD	467	48	419
44200624	CLASS A PATCHES, TYPE 3, 14 INCH	SQ YD	16		16
44200628	CLASS A PATCHES, TYPE IV, 14 INCH	SQ YD	27		27
44213000	PATCHING REINFORCEMENT	SQ YD	1519	1030	489
44213200	SAW CUTS	FOOT	7971	4515	3456
67000500	ENGINEER'S FIELD OFFICE, TYPE B	CAL MO	5	1	4
67100100	MOBILIZATION	L SUM	1	0.3	0.7
70100420	TRAFFIC CONTROL AND PROTECTION, STANDARD 701411	EACH	8	8	
70100700	TRAFFIC CONTROL AND PROTECTION, STANDARD 701406	L SUM	1	0.3	0.7
70100800	TRAFFIC CONTROL AND PROTECTION, STANDARD 701401	L SUM	1	0.3	0.7
70103815	TRAFFIC CONTROL SURVEILLANCE	CAL DAY	8	2	6
70300100	SHORT-TERM PAVEMENT MARKING	FOOT	19645	5717	13928
70300220	TEMPORARY PAVEMENT MARKING - LINE 4"	FOOT	211787	57402	154385
70300240	TEMPORARY PAVEMENT MARKING - LINE 6"	FOOT	27284	7940	19344
70300250	TEMPORARY PAVEMENT MARKING - LINE 8"	FOOT	670	670	
70300275	TEMPORARY PAVEMENT MARKING - LINE 18"	FOOT	48		48
70301000	WORK ZONE PAVEMENT MARKING REMOVAL	SQ FT	6549	1906	4643
78003130	PREFORMED PLASTIC PAVEMENT MARKING, TYPE B - LINE 6"	FOOT	27284	7940	19344
* 78005110	EPOXY PAVEMENT MARKING - LINE 4"	FOOT	211787	57402	154385
* 78005140	EPOXY PAVEMENT MARKING - LINE 8"	FOOT	670	670	
* 78005170	EPOXY PAVEMENT MARKING - LINE 18"	FOOT	48		48
* 78100100	RAISED REFLECTIVE PAVEMENT MARKER	EACH	2726	793	1933
X0322729	MATERIAL TRANSFER DEVICE	TON	33,954	9,881	24,873
X4063500	PRELIMINARY TEST STRIP	EACH	1		1
X4066530	POLYMERIZED BITUMINOUS CONCRETE SURFACE COURSE, SUPERPAVE, MIXTURE D, N105	TON	33,954	9,881	24,873
44000007	BITUMINOUS SURFACE REMOVAL 2"	SQ YD	303,164	88,225	214,939
X4421000	PARTIAL DEPTH PATCHING	TON	294	275	19

SUMMARY OF QUANTITIES			90% FED. 10% STATE TOTAL QUANTITIES	CONSTRUCTION TYPE CODE	
CODE NO	ITEM	UNIT		URBAN I000	RURAL I000
X4422000	PARTIAL DEPTH REMOVAL (VARIABLE DEPTH)	SQ YD	690	634	56
Z0075300	TIE BARS	EACH	212	203	9
Z0076600	TRAINEES	HOOR	500	150	350

© Y000
* SPECIALTY ITEMS

REVISIONS	
NAME	DATE

ILLINOIS DEPARTMENT OF TRANSPORTATION

SUMMARY OF QUANTITIES

SCALE: VERT.
DATE HORIZ.

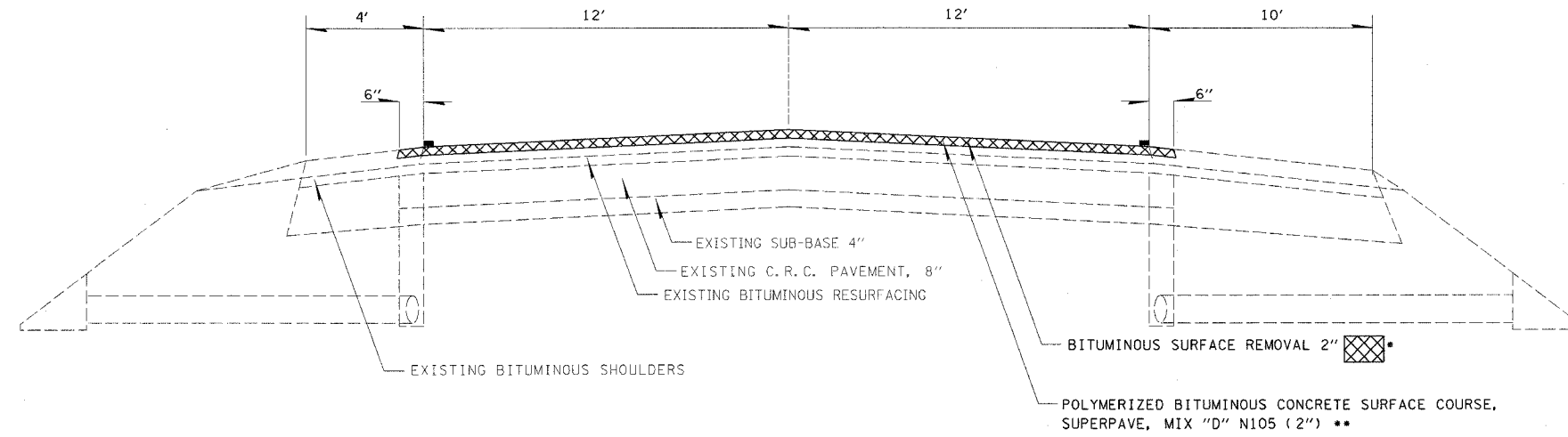
DRAWN BY
CHECKED BY

district
10/24/2005
c:\projects\74061\d04104pa.dgn
PS 6

PLOT DATE = 10/24/2005
FILE NAME = #FILE#
PLOT SCALE = #SCALE#
USER NAME = district

Rev.

F.A.I. RTE.	SECTION	COUNTY	TOTAL SHEETS	SHEET NO.
70	*	FAYETTE	20	4
STA.		TO STA.		
FED. ROAD DIST. NO.		ILLINOIS FED. AID PROJECT		
* (26-0 & 26-1)RS-3, (26-2)RS-2				



TYPICAL SECTION
 EB AND WB
 STATION 3033+80 TO STATION 538+33

- * MILL SURFACE 1 1/2" ON STR 026-0011 (EB) AND STR 026-0012 (WB)
- ** SURFACE COURSE 1 1/2" ON STR 026-0011 (EB) AND STR 026-0012 (WB)

PLOT DATE = 3/7/2006
 FILE NAME = #FILE#
 PLOT SCALE = #SCALE#
 USER NAME = district

REVISIONS	
NAME	DATE

ILLINOIS DEPARTMENT OF TRANSPORTATION

TYPICAL SECTIONS

SCALE: VERT. _____
 HORIZ. _____

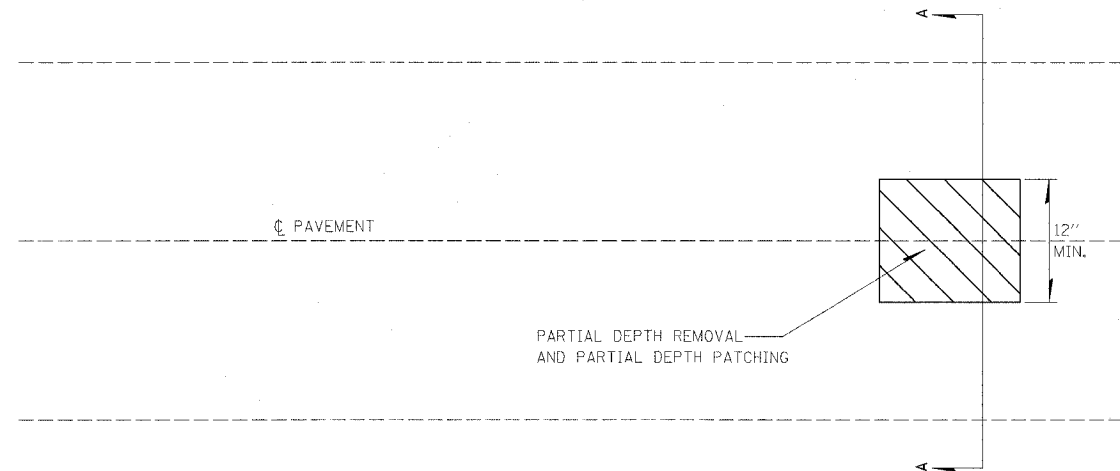
DATE _____

DRAWN BY _____
 CHECKED BY _____

REVISED 3/16/06

F.A.I. RTE.	SECTION	COUNTY	TOTAL SHEETS	SHEET NO.
TO	*	FAYETTE	20	6
STA.		TO STA.		
FED. ROAD DIST. NO.		ILLINOIS FED. AID PROJECT		
* (26-0 & 26-1)RS-3, (26-2)RS-2				

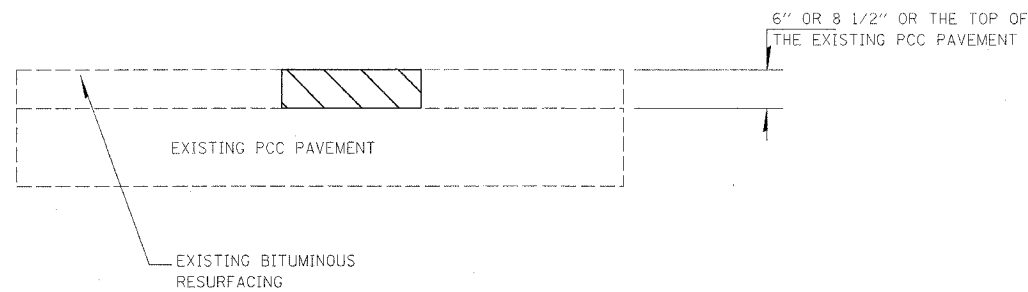
PARTIAL DEPTH PATCHING DETAIL



PARTIAL DEPTH REMOVAL AND PARTIAL DEPTH PATCHING

PAVEMENT DEPTHS FOR PAVEMENT PATCHING

LOCATION	DEPTH (INCH)
3033+80 TO 1527+00	14.0
1527+00 TO 1548+00	17.5
1548+00 TO 240+00	14.0
240+00 TO 277+00	17.5
277+00 TO 397+80	14.0
397+80 TO 538+33	17.5



6" OR 8 1/2" OR THE TOP OF THE EXISTING PCC PAVEMENT

EXISTING PCC PAVEMENT

EXISTING BITUMINOUS RESURFACING

SECTION A-A

NOTE: THE MINIMUM DIMENSIONS FOR PARTIAL DEPTH REMOVAL SHALL BE 12".

PARTIAL DEPTH PATCHING

LOCATION	DEPTH INCH	PARTIAL DEPTH REMOVAL (VARIABLE DEPTH) SQ YD	PARTIAL DEPTH PATCHING TON
I-70 EB CL	8.5	242.0	115.0
WB CL	6.0	56.0	19.0
WB CL	8.5	336.0	160.0
TOTALS =		634.0	294.0

CLASS A PATCHING SCHEDULE

LOCATION	CLASS A PATCHES, TYPE II, 14 INCH SQ YD	CLASS A PATCHES, TYPE III, 14 INCH SQ YD	CLASS A PATCHES, TYPE IV, 14 INCH SQ YD	CLASS A PATCHES, TYPE II, 17 1/2 INCH SQ YD	CLASS A PATCHES, TYPE III, 17 1/2 INCH SQ YD	CLASS A PATCHES, TYPE IV, 17 1/2 INCH SQ YD	PATCHING REINFORCEMENT SQ YD	TIE BARS EACH	SAW CUTS FOOT
I-70 EBDL	216.0	0.0	27.0	187.0	16.0	0.0	446.0	9.0	3094.0
EBPL	147.0	0.0	0.0	128.0	0.0	0.0	275.0	0.0	2046.0
WBDL	72.0	16.0	0.0	72.0	0.0	547.0	707.0	203.0	2150.0
WBPL	32.0	0.0	0.0	59.0	0.0	0.0	91.0	0.0	681.0
TOTALS =	467.0	16.0	27.0	446.0	16.0	547.0	1519.0	212.0	7971.0

REVISIONS	
NAME	DATE

ILLINOIS DEPARTMENT OF TRANSPORTATION

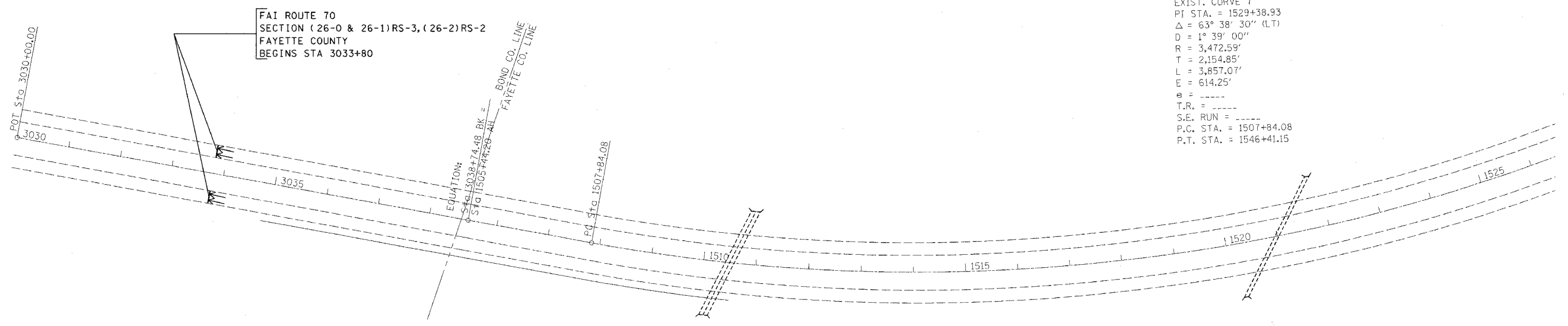
PATCHING DETAIL AND SCHEDULE

SCALE: VERT. HORIZ.
 DATE

DRAWN BY
 CHECKED BY

F.A.I. RTE.	SECTION	COUNTY	TOTAL SHEETS	SHEET NO.
70	*	FAYETTE	20	7
STA.		TO STA.		
FED. ROAD DIST. NO.		ILLINOIS	FED. AID PROJECT	
* (26-0 & 26-1)RS-3, (26-2)RS-2				

district
10/24/2005
c:\projects\74061\d04104pa.dgn
PS 1



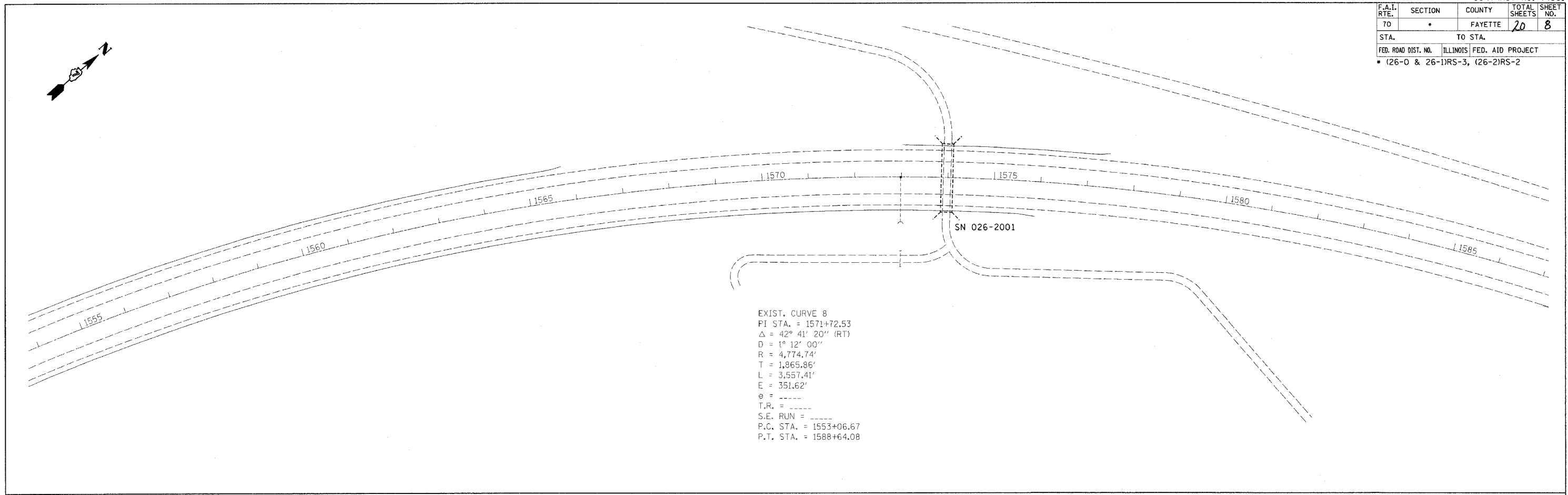
REVISIONS	
NAME	DATE

ILLINOIS DEPARTMENT OF TRANSPORTATION
STATION 3030 + 00
TO
STATION 1555 + 00
SCALE: VERT. _____
HORIZ. _____
DATE _____ DRAWN BY _____
CHECKED BY _____

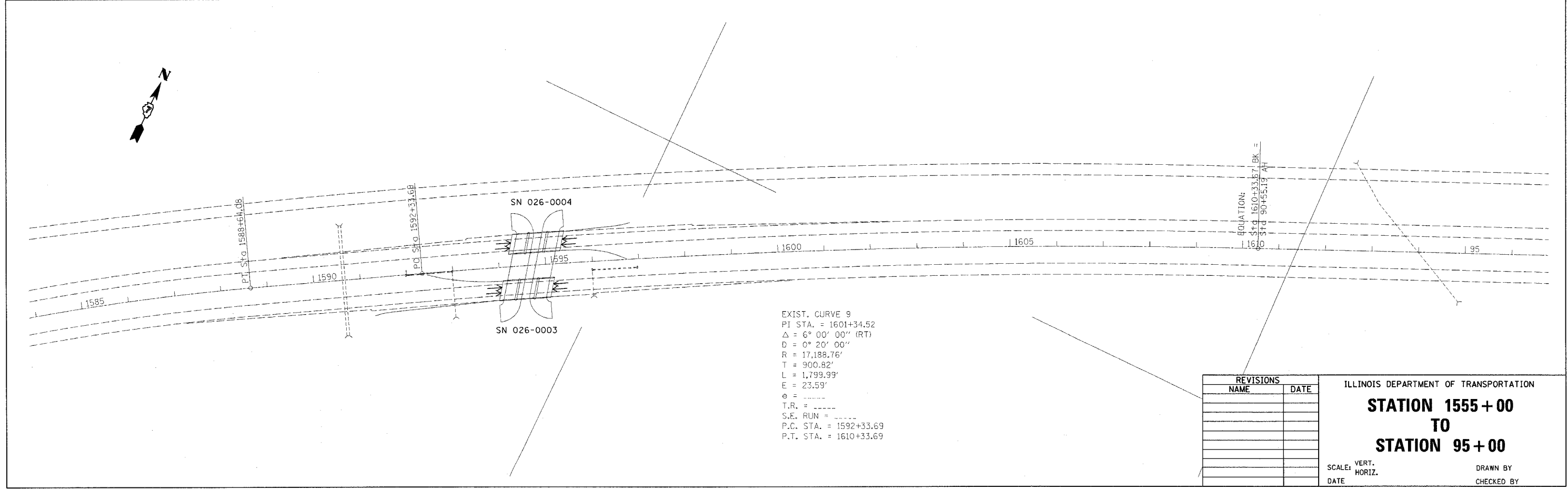
PLOT DATE = 10/24/2005
FILE NAME = #FILE#
PLOT SCALE = #SCALE#
USER NAME = #USER#

F.A.I. RTE.	SECTION	COUNTY	TOTAL SHEETS	SHEET NO.
70		FAYETTE	20	8
STA.		TO STA.		
FED. ROAD DIST. NO.		ILLINOIS FED. AID PROJECT		
• (26-0 & 26-1)RS-3, (26-2)RS-2				

district
10/24/2005
c:\projects\74061\d04104pa.dgn
PS 2



EXIST. CURVE 8
 PI STA. = 1571+72.53
 $\Delta = 42^\circ 41' 20''$ (RT)
 $D = 1^\circ 12' 00''$
 $R = 4,774.74'$
 $T = 1,865.86'$
 $L = 3,557.41'$
 $E = 351.62'$
 $\theta = \text{-----}$
 $T.R. = \text{-----}$
 $S.E. RUN = \text{-----}$
 $P.C. STA. = 1553+06.67$
 $P.T. STA. = 1588+64.08$



EXIST. CURVE 9
 PI STA. = 1601+34.52
 $\Delta = 6^\circ 00' 00''$ (RT)
 $D = 0^\circ 20' 00''$
 $R = 17,188.76'$
 $T = 900.82'$
 $L = 1,799.99'$
 $E = 23.59'$
 $\theta = \text{-----}$
 $T.R. = \text{-----}$
 $S.E. RUN = \text{-----}$
 $P.C. STA. = 1592+33.69$
 $P.T. STA. = 1610+33.69$

EQUATION:
 $STd \ 1610+33.67 \ BK =$
 $STd \ 90+55.19 \ AN =$

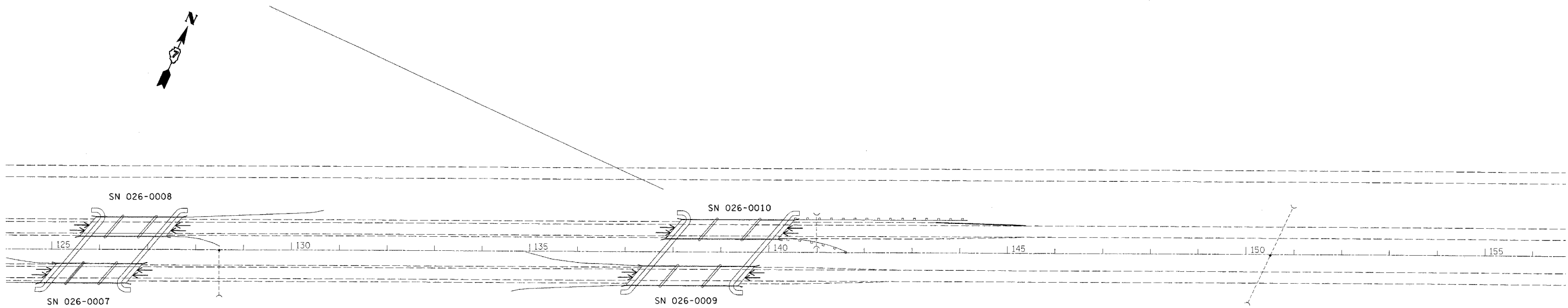
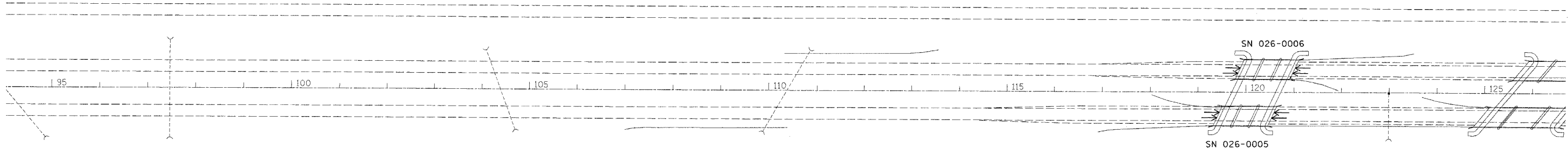
PLOT DATE = 10/24/2005
 FILE NAME = #FILE#
 PLOT SCALE = #SCALE#
 USER NAME = #USER#

REVISIONS	
NAME	DATE

ILLINOIS DEPARTMENT OF TRANSPORTATION
STATION 1555 + 00
TO
STATION 95 + 00
 SCALE: VERT. _____
 HORIZ. _____
 DATE _____ DRAWN BY _____
 CHECKED BY _____

F.A.I. RTE.	SECTION	COUNTY	TOTAL SHEETS	SHEET NO.
70		FAYETTE	20	9
STA.	TO STA.			
FED. ROAD DIST. NO.	ILLINOIS FED. AID PROJECT			
	• (26-0 & 26-1)RS-3, (26-2)RS-2			

district
 10/24/2005
 c:\projects\74061\d04104pa.dgn
 PS 3



PLOT DATE = 10/24/2005
 FILE NAME = #FILE#
 PLOT SCALE = #SCALE#
 USER NAME = district

REVISIONS	
NAME	DATE

ILLINOIS DEPARTMENT OF TRANSPORTATION

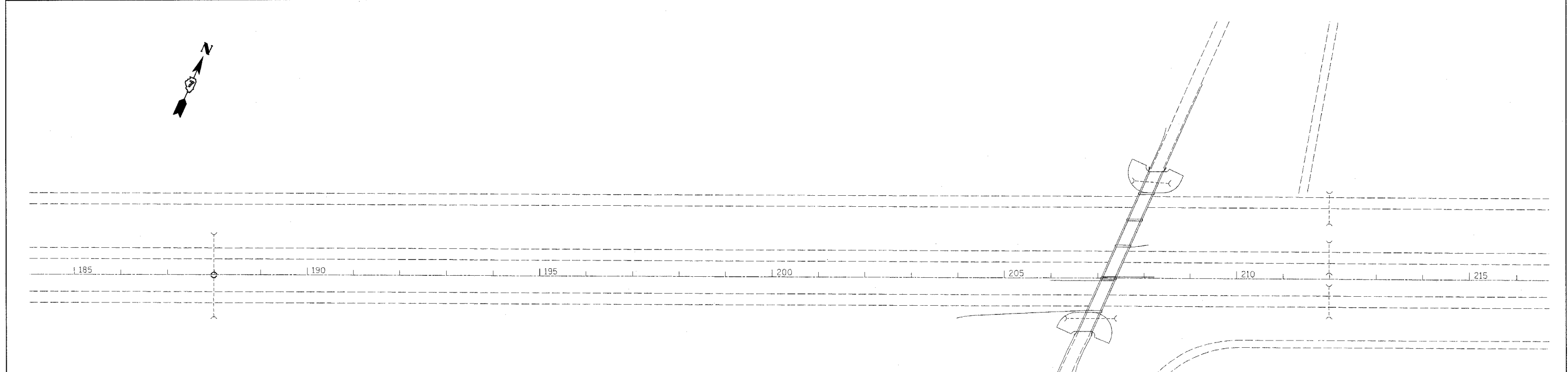
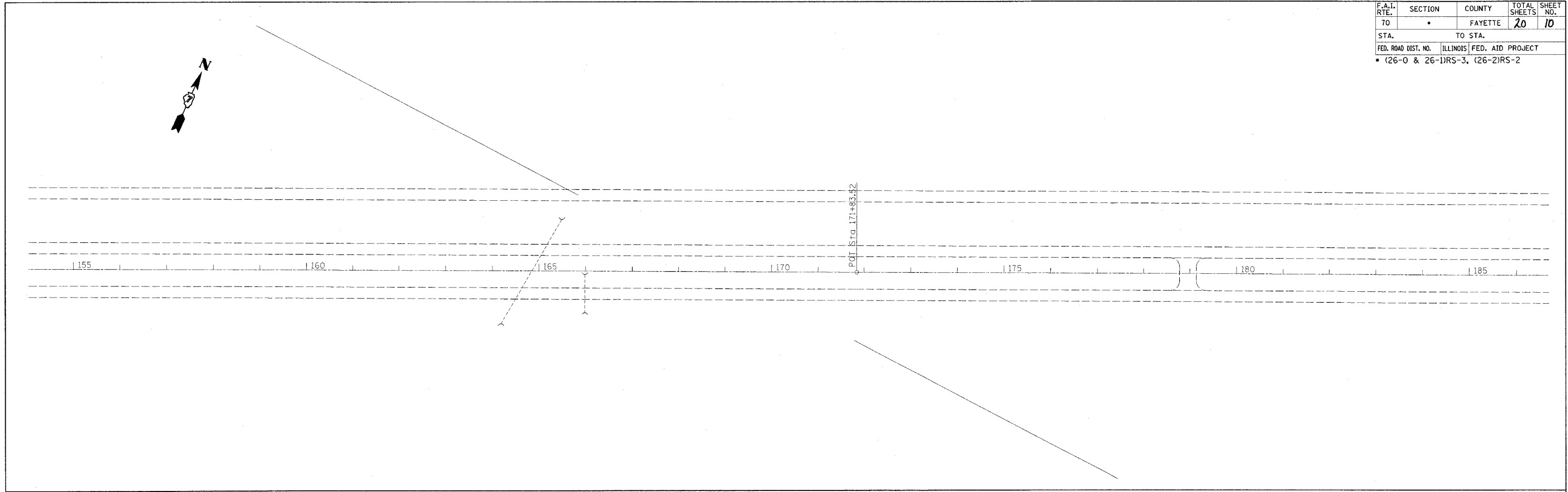
**STATION 95 + 00
TO
STATION 155 + 00**

SCALE: VERT. _____
 HORIZ. _____

DATE _____ DRAWN BY _____
 CHECKED BY _____

F.A.I. RTE.	SECTION	COUNTY	TOTAL SHEETS	SHEET NO.
70	•	FAYETTE	20	10
STA.		TO STA.		
FED. ROAD DIST. NO.		ILLINOIS FED. AID PROJECT		
• (26-0 & 26-1)RS-3, (26-2)RS-2				

district
 10/24/2005
 c:\projects\74061\d\04104pa.dgn
 PS 4



REVISIONS	
NAME	DATE

ILLINOIS DEPARTMENT OF TRANSPORTATION

STATION 155 + 00
TO
STATION 215 + 00

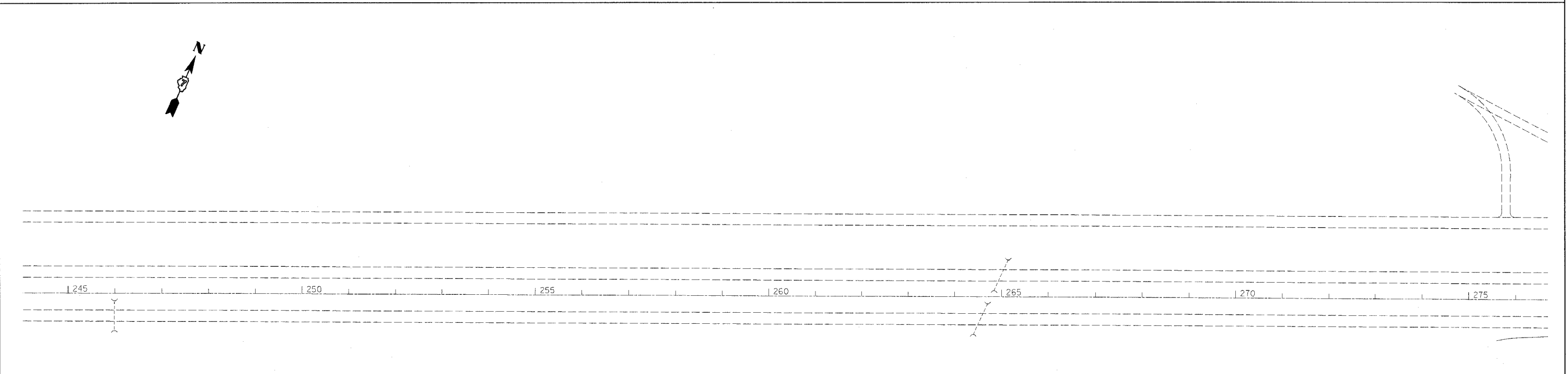
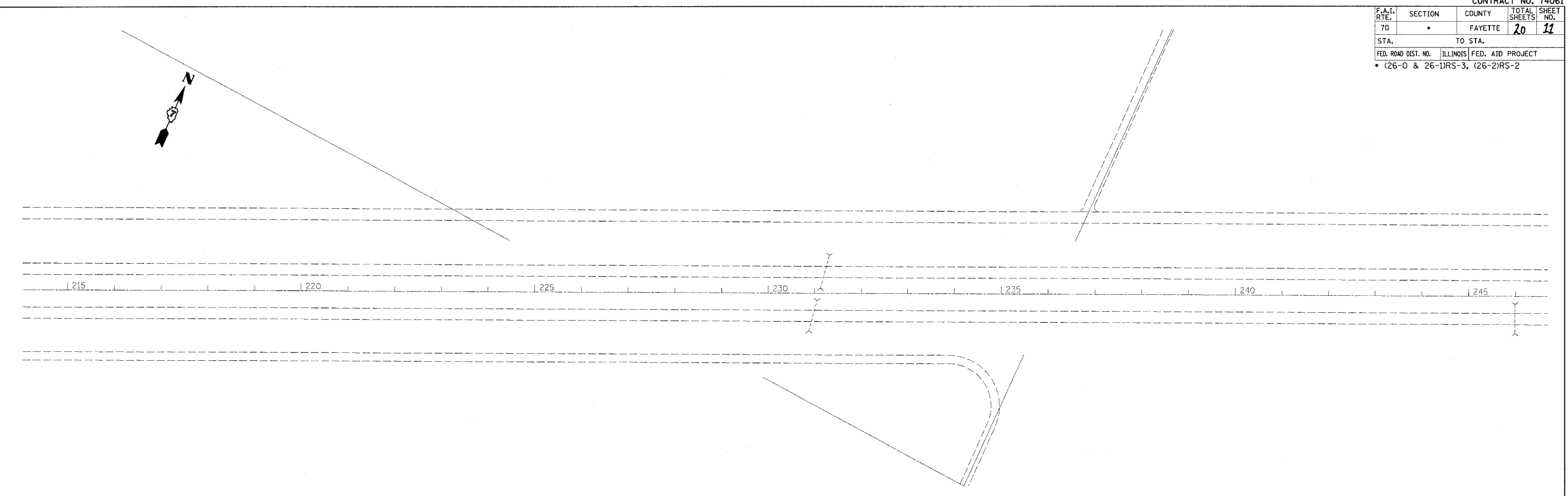
SCALE: VERT. _____
 HORIZ. _____

DATE _____ DRAWN BY _____
 CHECKED BY _____

PLOT DATE = 10/24/2005
 FILE NAME = #FILE#
 PLOT SCALE = #SCALE#
 USER NAME = district

F.A.I. RTE.	SECTION	COUNTY	TOTAL SHEETS	SHEET NO.
70	*	FAYETTE	20	11
STA.		TO STA.		
FED. ROAD DIST. NO.		ILLINOIS	FED. AID PROJECT	
* (26-0 & 26-1RS-3, (26-2)RS-2				

district
10/24/2005
c:\projects\74061\d04104pa.dgn
PS 5



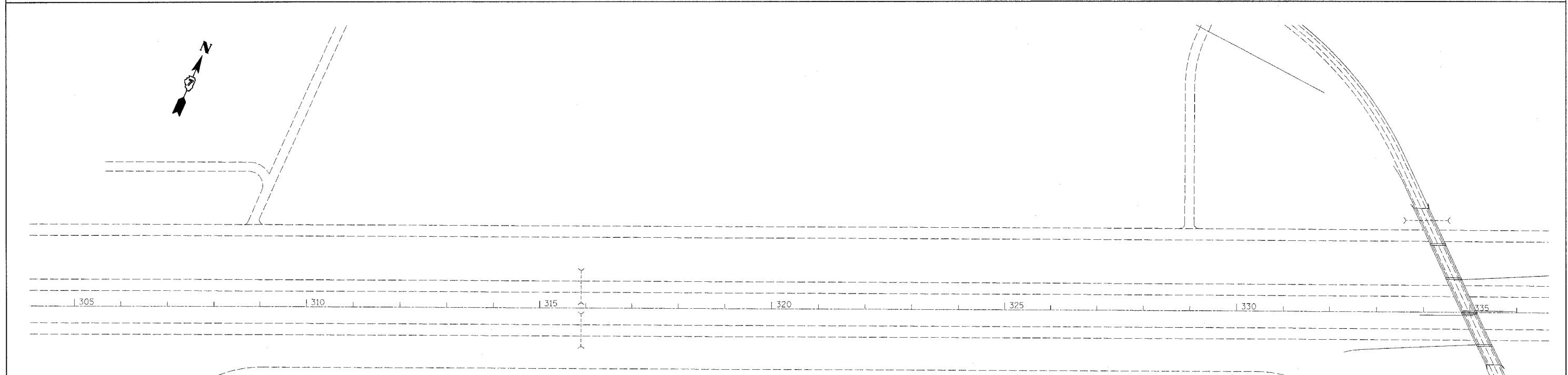
PLOT DATE = 10/24/2005
FILE NAME = #FILE#
PLOT SCALE = #SCALE#
USER NAME = district

REVISIONS	
NAME	DATE

ILLINOIS DEPARTMENT OF TRANSPORTATION
STATION 215 + 00
TO
STATION 275 + 00
SCALE: VERT. _____
HORIZ. _____
DATE _____ DRAWN BY _____
CHECKED BY _____

F.A.I. RTE.	SECTION	COUNTY	TOTAL SHEETS	SHEET NO.
70		FAYETTE	20	12
STA.		TO STA.		
FED. ROAD DIST. NO.		ILLINOIS FED. AID PROJECT		
• (26-0 & 26-1)RS-3, (26-2)RS-2				

district
10/24/2005
c:\projects\74061\d04104pa.dgn
PS 6



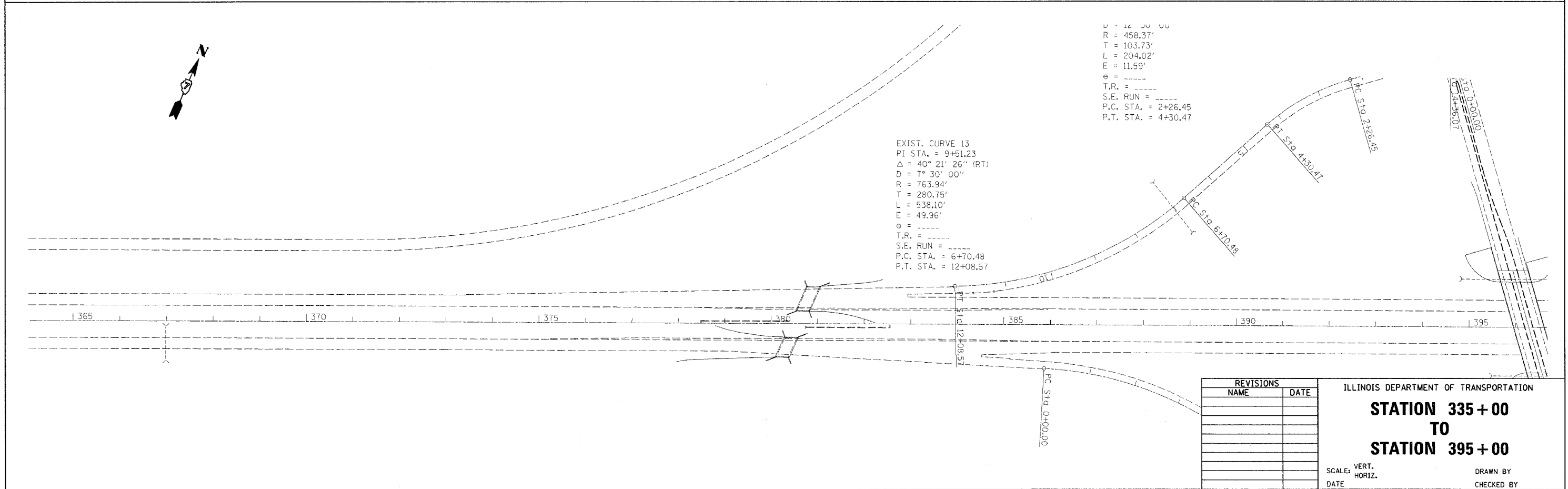
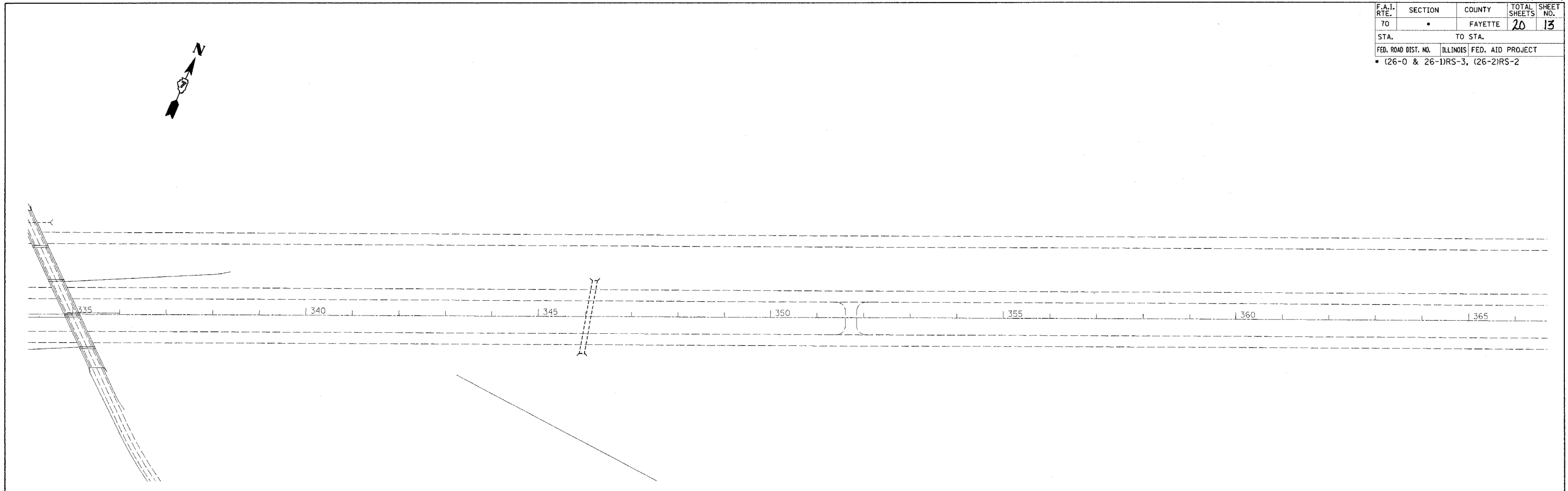
PLOT DATE = 10/24/2005
FILE NAME = #FILE#
PLOT SCALE = #SCALE#
USER NAME = district

REVISIONS	
NAME	DATE

ILLINOIS DEPARTMENT OF TRANSPORTATION
**STATION 275 + 00
TO
STATION 335 + 00**
SCALE: VERT. _____
HORIZ. _____
DATE _____ DRAWN BY _____
CHECKED BY _____

F.A.I. RTE.	SECTION	COUNTY	TOTAL SHEETS	SHEET NO.
70	•	FAYETTE	20	13
STA.		TO STA.		
FED. ROAD DIST. NO.		ILLINOIS FED. AID PROJECT		
• (26-0 & 26-1)RS-3, (26-2)RS-2				

district
 10/24/2005
 c:\projects\74061\d\04104pa.dgn
 PS 7



PLOT DATE = 10/24/2005
 FILE NAME = #FILE#
 PLOT SCALE = #SCALE#
 USER NAME = district

REVISIONS	
NAME	DATE

ILLINOIS DEPARTMENT OF TRANSPORTATION

**STATION 335 + 00
TO
STATION 395 + 00**

SCALE: VERT. _____
 HORIZ. _____

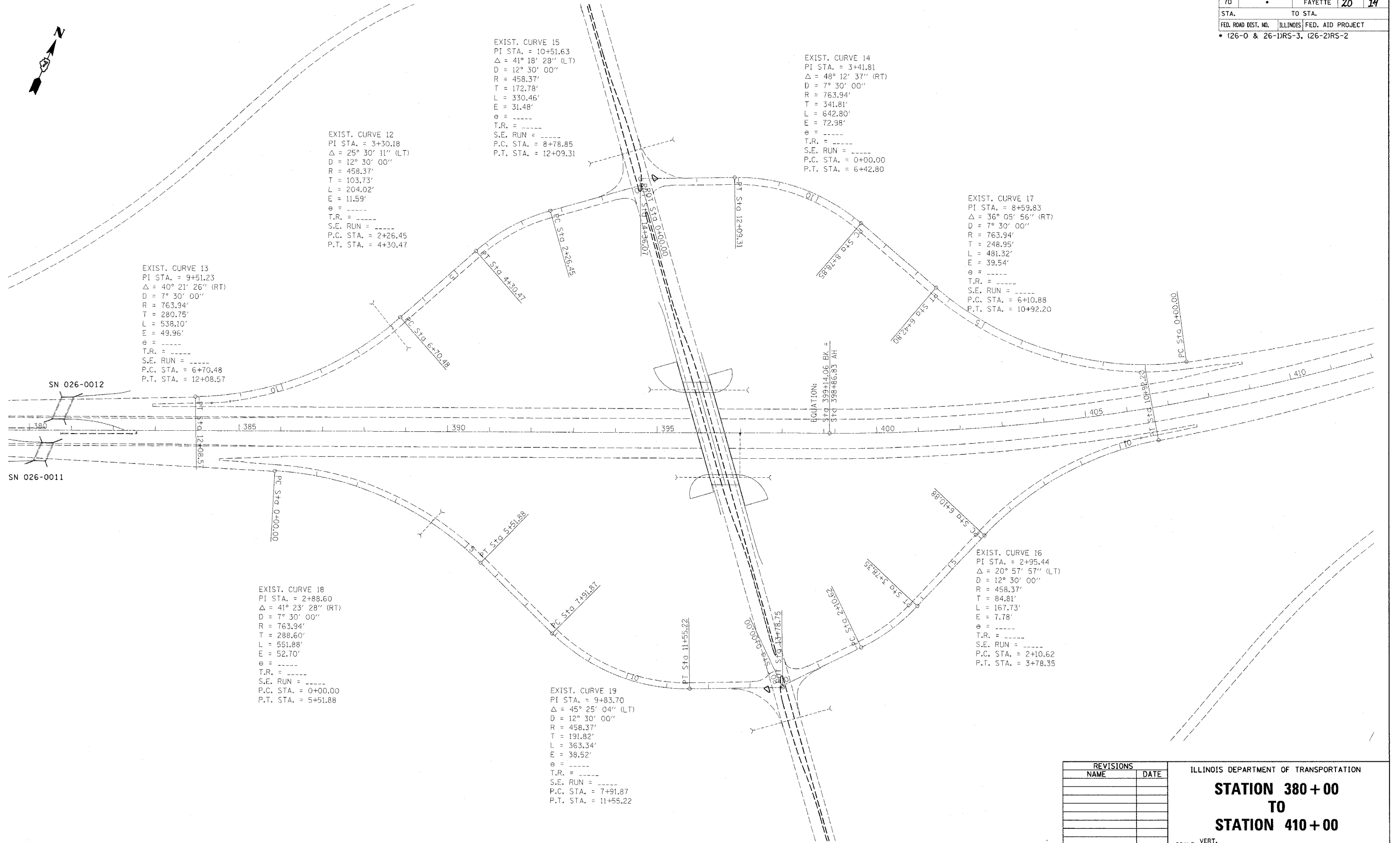
DATE _____ DRAWN BY _____
 CHECKED BY _____

F.A.I. RTE.	SECTION	COUNTY	TOTAL SHEETS	SHEET NO.
70		FAYETTE	20	14

STA.	TO STA.
FED. ROAD DIST. NO. ILLINOIS	FED. AID PROJECT

• (26-0 & 26-1)RS-3, (26-2)RS-2

district 10/24/2005
 c:\projects\74061\d04104\pa.dgn
 PS 8



EXIST. CURVE 15
 PI STA. = 10+51.63
 $\Delta = 41^\circ 18' 28''$ (LT)
 $D = 12^\circ 30' 00''$
 $R = 458.37'$
 $T = 172.78'$
 $L = 330.46'$
 $E = 31.48'$
 $\theta = \text{---}$
 $T.R. = \text{---}$
 $S.E. RUN = \text{---}$
 $P.C. STA. = 8+78.85$
 $P.T. STA. = 12+09.31$

EXIST. CURVE 14
 PI STA. = 3+41.81
 $\Delta = 48^\circ 12' 37''$ (RT)
 $D = 7^\circ 30' 00''$
 $R = 763.94'$
 $T = 341.81'$
 $L = 642.80'$
 $E = 72.98'$
 $\theta = \text{---}$
 $T.R. = \text{---}$
 $S.E. RUN = \text{---}$
 $P.C. STA. = 0+00.00$
 $P.T. STA. = 6+42.80$

EXIST. CURVE 12
 PI STA. = 3+30.18
 $\Delta = 25^\circ 30' 11''$ (LT)
 $D = 12^\circ 30' 00''$
 $R = 458.37'$
 $T = 103.73'$
 $L = 204.02'$
 $E = 11.59'$
 $\theta = \text{---}$
 $T.R. = \text{---}$
 $S.E. RUN = \text{---}$
 $P.C. STA. = 2+26.45$
 $P.T. STA. = 4+30.47$

EXIST. CURVE 13
 PI STA. = 9+51.23
 $\Delta = 40^\circ 21' 26''$ (RT)
 $D = 7^\circ 30' 00''$
 $R = 763.94'$
 $T = 280.75'$
 $L = 538.10'$
 $E = 49.96'$
 $\theta = \text{---}$
 $T.R. = \text{---}$
 $S.E. RUN = \text{---}$
 $P.C. STA. = 6+70.48$
 $P.T. STA. = 12+08.57$

EXIST. CURVE 17
 PI STA. = 8+59.83
 $\Delta = 36^\circ 05' 56''$ (RT)
 $D = 7^\circ 30' 00''$
 $R = 763.94'$
 $T = 248.95'$
 $L = 481.32'$
 $E = 39.54'$
 $\theta = \text{---}$
 $T.R. = \text{---}$
 $S.E. RUN = \text{---}$
 $P.C. STA. = 6+10.88$
 $P.T. STA. = 10+92.20$

EXIST. CURVE 18
 PI STA. = 2+88.60
 $\Delta = 41^\circ 23' 28''$ (RT)
 $D = 7^\circ 30' 00''$
 $R = 763.94'$
 $T = 288.60'$
 $L = 551.88'$
 $E = 52.70'$
 $\theta = \text{---}$
 $T.R. = \text{---}$
 $S.E. RUN = \text{---}$
 $P.C. STA. = 0+00.00$
 $P.T. STA. = 5+51.88$

EXIST. CURVE 19
 PI STA. = 9+83.70
 $\Delta = 45^\circ 25' 04''$ (LT)
 $D = 12^\circ 30' 00''$
 $R = 458.37'$
 $T = 191.82'$
 $L = 363.34'$
 $E = 38.52'$
 $\theta = \text{---}$
 $T.R. = \text{---}$
 $S.E. RUN = \text{---}$
 $P.C. STA. = 7+91.87$
 $P.T. STA. = 11+55.22$

EXIST. CURVE 16
 PI STA. = 2+95.44
 $\Delta = 20^\circ 57' 57''$ (LT)
 $D = 12^\circ 30' 00''$
 $R = 458.37'$
 $T = 84.81'$
 $L = 167.73'$
 $E = 7.78'$
 $\theta = \text{---}$
 $T.R. = \text{---}$
 $S.E. RUN = \text{---}$
 $P.C. STA. = 2+10.62$
 $P.T. STA. = 3+78.35$

EQUATION:
 $STG \ 399+4.06 \ BK =$
 $STG \ 398+6.83 \ AH$

REVISIONS	
NAME	DATE

ILLINOIS DEPARTMENT OF TRANSPORTATION
STATION 380+00
TO
STATION 410+00

SCALE: VERT. _____
 HORIZ. _____

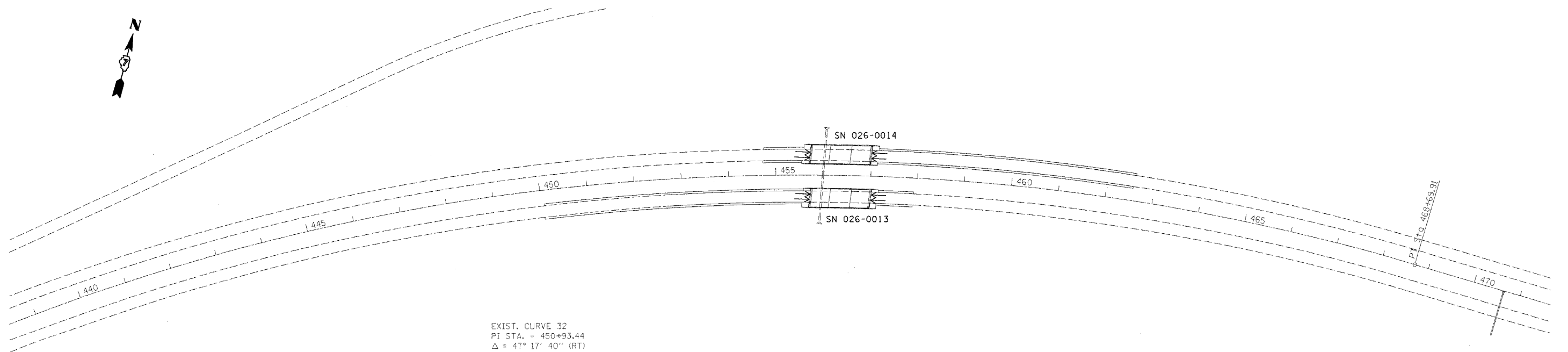
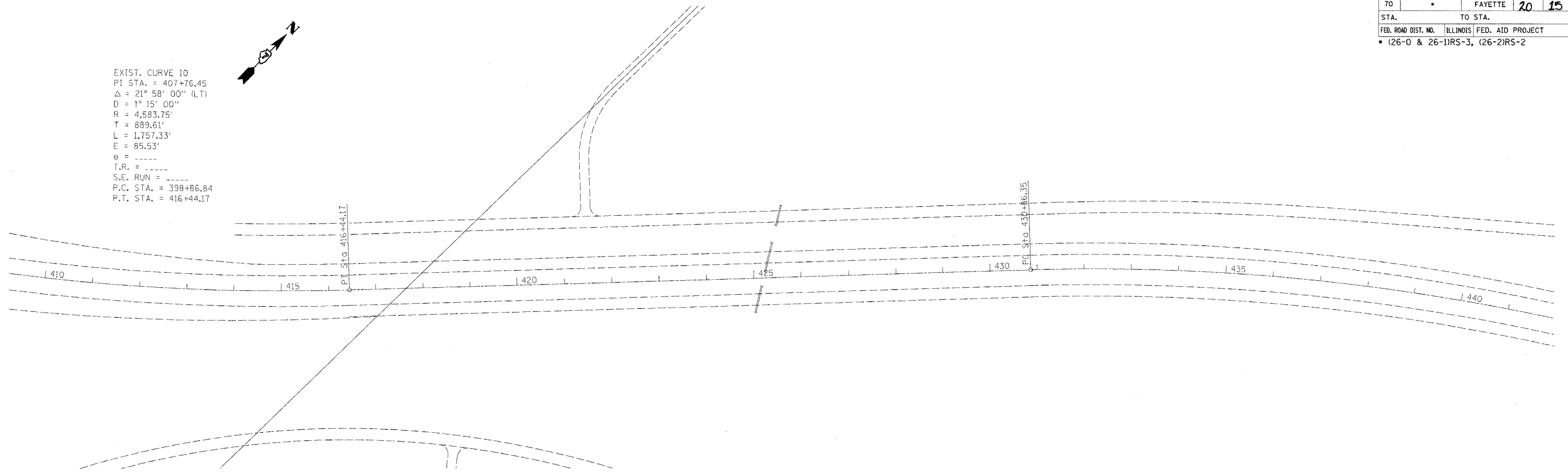
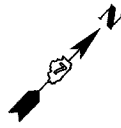
DRAWN BY _____
 CHECKED BY _____

PLOT DATE = 10/24/2005
 PLOT SCALE = AS SHOWN
 USER NAME = district

F.A.I. RTE.	SECTION	COUNTY	TOTAL SHEETS	SHEET NO.
70	.	FAYETTE	20	15
STA.		TO STA.		
FED. ROAD DIST. NO.		ILLINOIS FED. AID PROJECT		
• (26-0 & 26-1)RS-3, (26-2)RS-2				

district
 10/24/2005
 c:\projects\74061\d\04104p.dgn
 P S @

EXIST. CURVE 10
 PI STA. = 407+76.45
 $\Delta = 21^\circ 58' 00''$ (LT)
 $D = 1^\circ 15' 00''$
 $R = 4,583.75'$
 $T = 889.61'$
 $L = 1,757.33'$
 $E = 85.53'$
 $e =$ -----
 T.R. = -----
 S.E. RUN = -----
 P.C. STA. = 398+86.84
 P.T. STA. = 416+44.17



EXIST. CURVE 32
 PI STA. = 450+93.44
 $\Delta = 47^\circ 17' 40''$ (RT)
 $D = 1^\circ 15' 00''$
 $R = 4,583.75'$
 $T = 2,007.09'$
 $L = 3,783.56'$
 $E = 420.17'$
 $e =$ -----
 T.R. = -----
 S.E. RUN = -----
 P.C. STA. = 430+86.35
 P.T. STA. = 468+69.91

PLOT DATE = 10/24/2005
 FILE NAME = 41015.dwg
 PLOT SCALE = 1/8"=1'-0"
 USER NAME = district

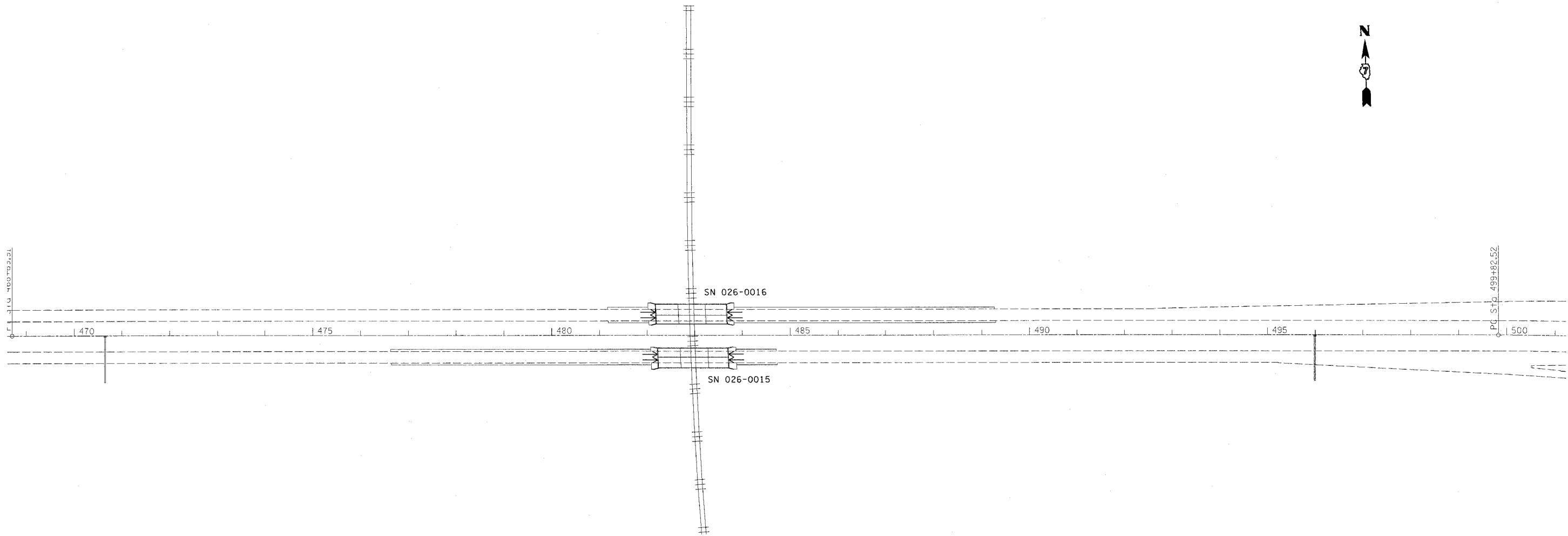
REVISIONS	
NAME	DATE

ILLINOIS DEPARTMENT OF TRANSPORTATION
STATION 410 + 00
TO
STATION 470 + 00
 SCALE: VERT. DATE
 HORIZ. CHECKED BY
 DRAWN BY

district
 10/24/2005
 c:\projects\74061\d\04104pa.dgn
 PS 10

CONTRACT NO. 74061

F.A.I. RTE.	SECTION	COUNTY	TOTAL SHEETS	SHEET NO.
70	.	FAYETTE	20	16
STA.		TO STA.		
FED. ROAD DIST. NO.		ILLINOIS FED. AID PROJECT		
• (26-0 & 26-1)RS-3, (26-2)RS-2				



PLOT DATE = 10/24/2005
 FILE NAME = #FILE#
 PLOT SCALE = #SCALE#
 USER NAME = district

REVISIONS	
NAME	DATE

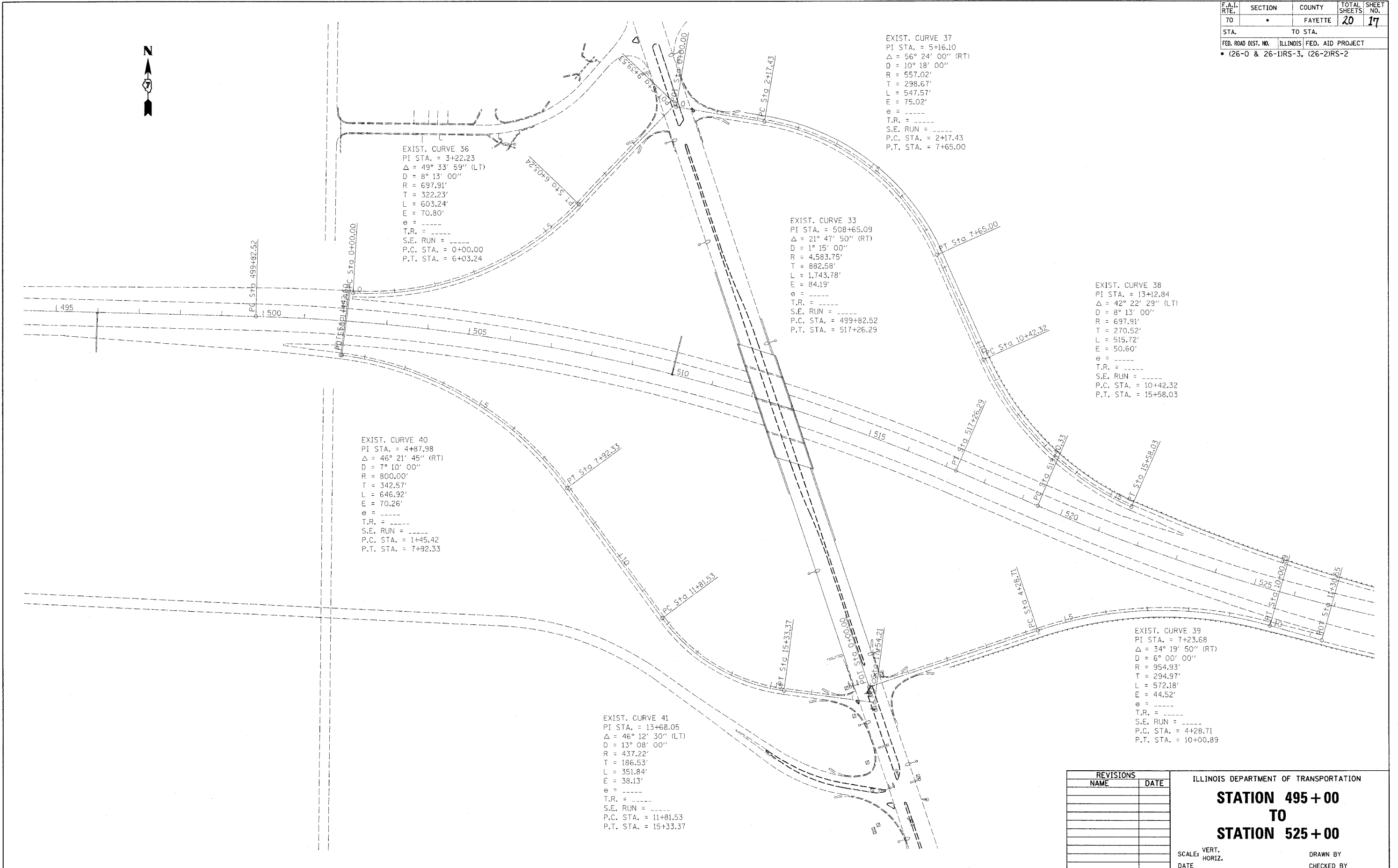
ILLINOIS DEPARTMENT OF TRANSPORTATION

**STATION 470+00
 TO
 STATION 500+00**

SCALE: VERT.
 DATE: HORIZ.
 DRAWN BY
 CHECKED BY

F.A.I. RTE.	SECTION	COUNTY	TOTAL SHEETS	SHEET NO.
70		FAYETTE	20	17
STA.		TO STA.		
FED. ROAD DIST. NO.		ILLINOIS FED. AID PROJECT		
• (26-0 & 26-1)RS-3, (26-2)RS-2				

district
10/24/2005
c:\projects\74061\d\04104pa.dgn
PS 11



REVISIONS	
NAME	DATE

ILLINOIS DEPARTMENT OF TRANSPORTATION
STATION 495 + 00
TO
STATION 525 + 00
 SCALE: VERT. _____
 HORIZ. _____
 DATE _____ DRAWN BY _____
 CHECKED BY _____

PLOT DATE = 10/24/2005
 FILE NAME = #FILE#
 PLOT SCALE = #SCALE#
 USER NAME = #USER#

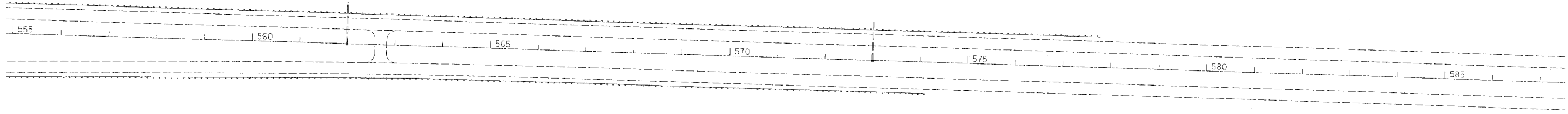
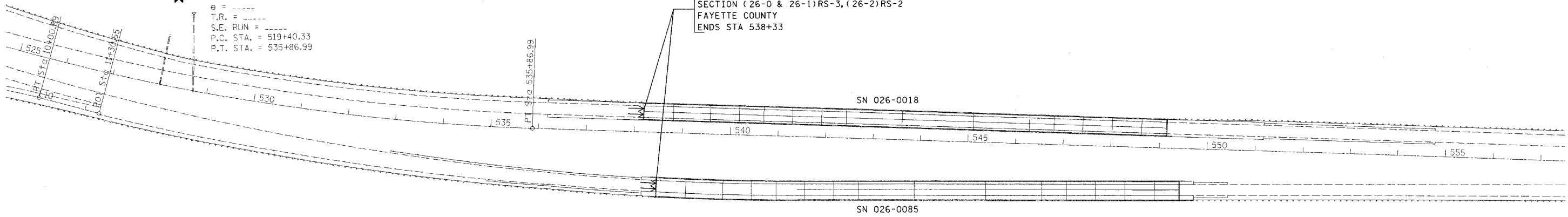
district
10/24/2005
c:\projects\74061\d\04104pa.dgn
PS 12

CONTRACT NO. 74061

F.A.I. RTE.	SECTION	COUNTY	TOTAL SHEETS	SHEET NO.
70		FAYETTE	20	18
STA.		TO STA.		
FED. ROAD DIST. NO.		ILLINOIS FED. AID PROJECT		
• (26-0 & 26-1)RS-3, (26-2)RS-2				

EXIST. CURVE 34
 P.I. STA. = 527+72.65
 $\Delta = 20^\circ 35' 00''$ (LT)
 $D = 1^\circ 15' 00''$
 $R = 4,583.75'$
 $T = 832.32'$
 $L = 1,646.67'$
 $E = 74.95'$
 $\theta =$
 $T.R. =$
 $S.E. RUN =$
 P.C. STA. = 519+40.33
 P.T. STA. = 535+86.99

FAI ROUTE 70
 SECTION (26-0 & 26-1)RS-3, (26-2)RS-2
 FAYETTE COUNTY
 ENDS STA 538+33



REVISIONS	
NAME	DATE

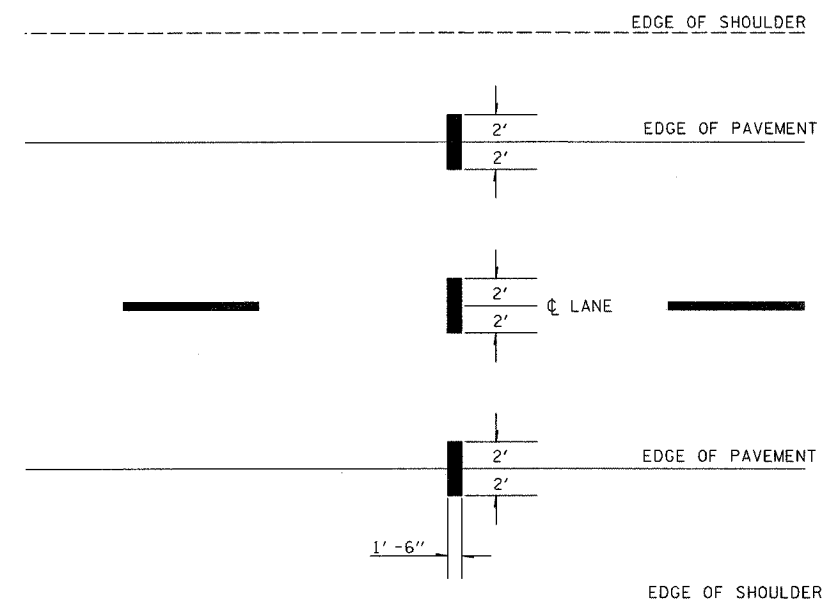
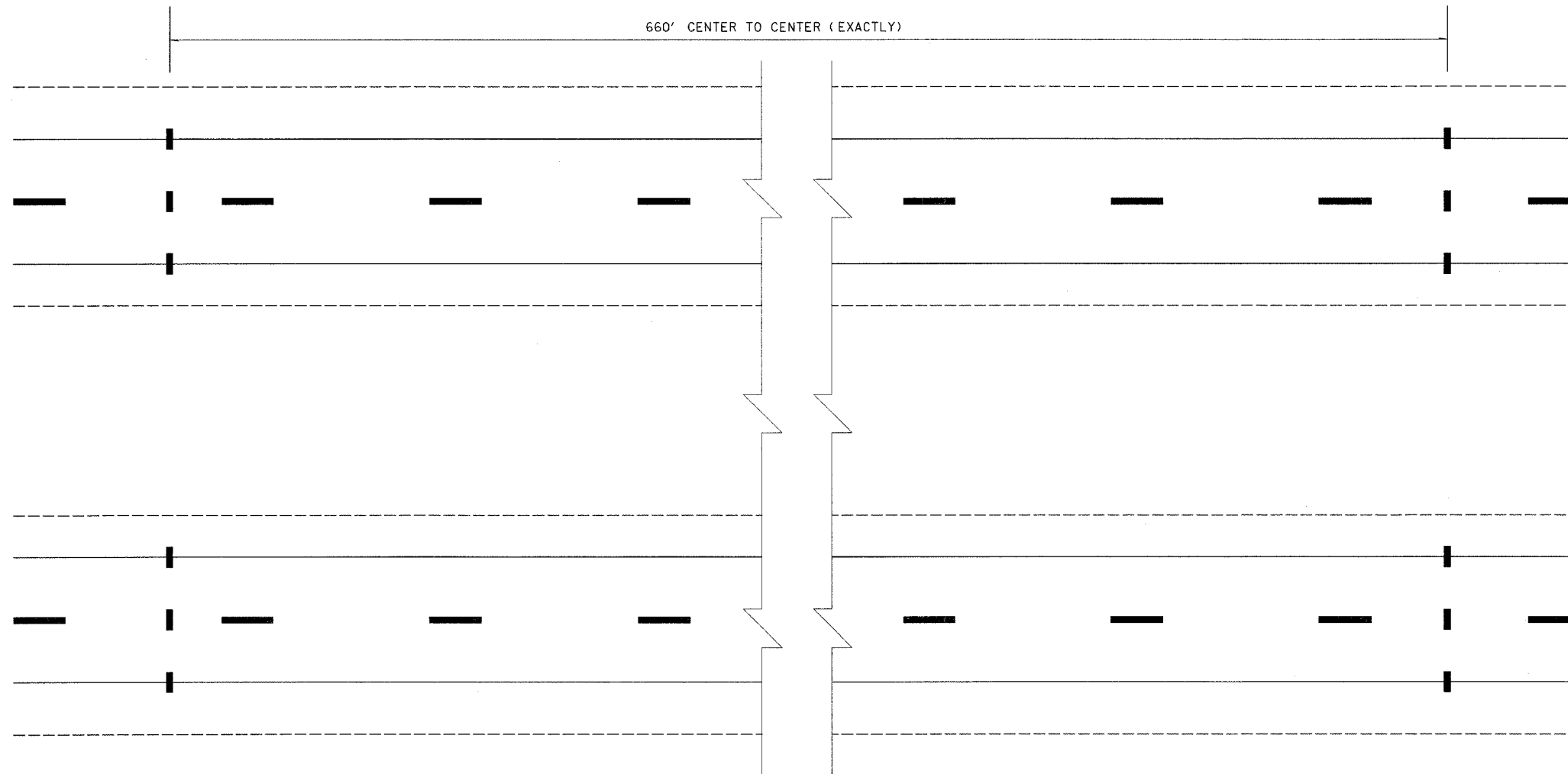
ILLINOIS DEPARTMENT OF TRANSPORTATION
STATION 525 + 00
TO
STATION 585 + 00
 SCALE: VERT. _____
 HORIZ. _____
 DATE _____ DRAWN BY _____
 CHECKED BY _____

PLOT DATE = 10/24/2005
 FILE NAME = #FILE#
 PLOT SCALE = #SCALE#
 USER NAME = district

10/24/2005
 c:\projects\74061\104104pa.dgn
 MM0 REV: 06-01-99
 EACZC

1 2 3 4 5 6 7 8 9
 19 20 21 22 23 24 25 26 27
 28 29 30 31 32 33 34 35 36
 37 38 39 40 41 42 43 44 45
 46 47 48 49 50 51 52 53 54
 55 56 57 58 59 60 61 62 63

CONTRACT NO. 74061				
F.A.I. RTE.	SECTION	COUNTY	TOTAL SHEETS	SHEET NO.
70	*	FAYETTE	20	19
STA.		TO STA.		
FED. ROAD DIST. NO.		ILLINOIS FED. AID PROJECT		
* (26-0 & 26-1)RS-3, (26-2)RS-2				



NOTE:
 STATE POLICE REPRESENTATIVE MUST BE
 PRESENT WHEN PAVEMENT MARKING IS PLACED

NOT TO SCALE

REVISIONS	
NAME	DATE
MMO	12-99

ILLINOIS DEPARTMENT OF TRANSPORTATION

AERIAL SPEED ZONE CHECKS

SCALE: VERT. DATE: ISSUED: 06-20-97

DRAWN BY: CHECKED BY:

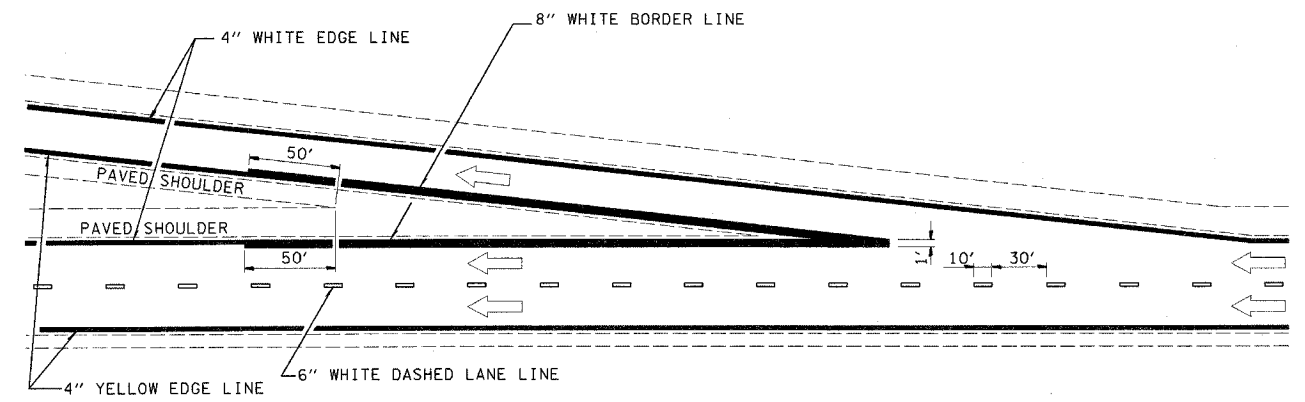
PLOT DATE = 10/24/2005
 FILE NAME = #FILE#
 PLOT SCALE = #SCALE#
 USER NAME = #USER#

10/24/2005 10:11:12
 c:\projects\74061\fig0410\pa.dgn
 MNO REV: 05-28-99
 ETIPM

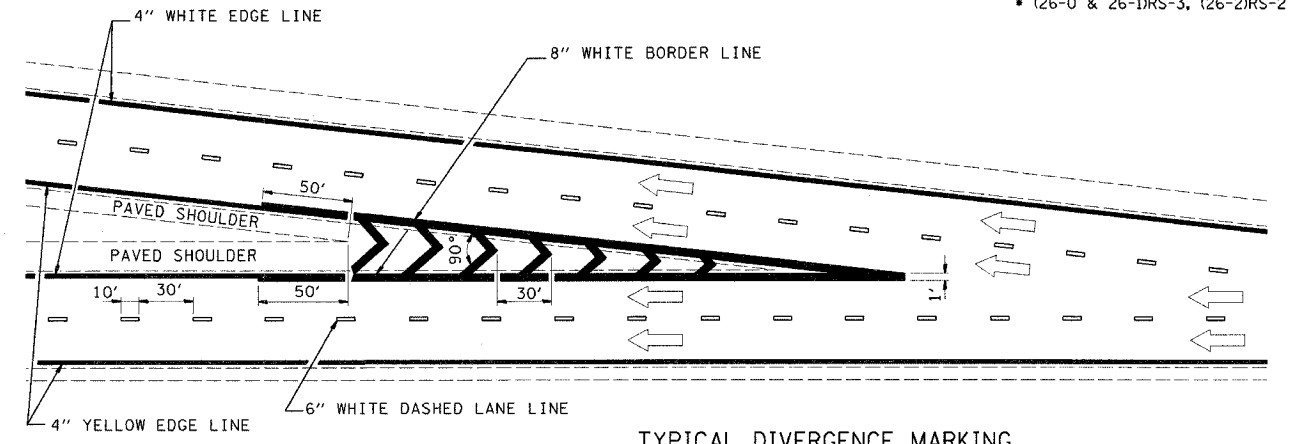
1 2 3 4 5 6 7 8 9
 10 11 12 13 14 15 16 17 18
 19 20 21 22 23 24 25 26 27
 28 29 30 31 32 33 34 35
 36 37 38 39 40 41 42 43 44
 45 46 47 48 49 50 51 52 53 54
 55 56 57 58 59 60 61 62 63

CONTRACT NO. 74061

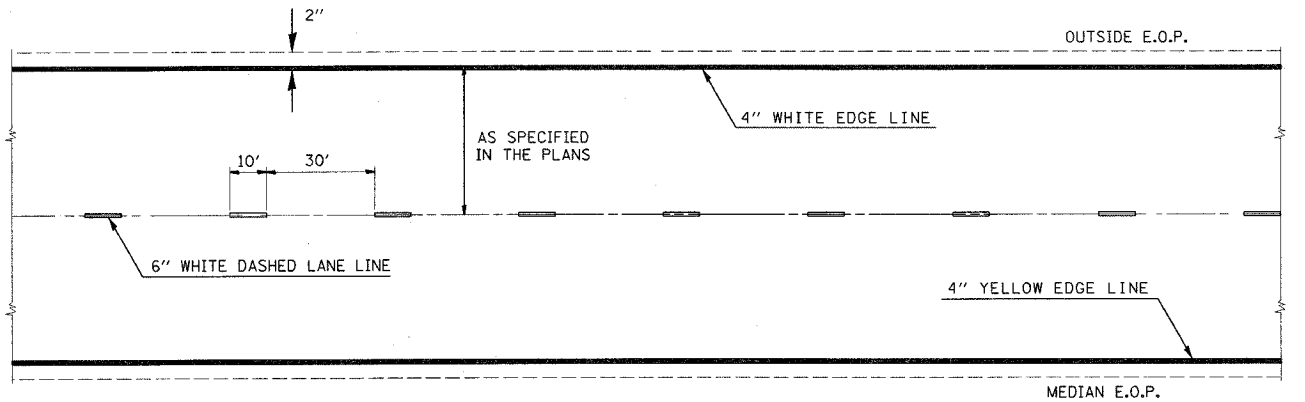
F.A.I. RTE.	SECTION	COUNTY	TOTAL SHEETS	SHEET NO.
70		FAYETTE	20	20
STA.		TO STA.		
FED. ROAD DIST. NO.		ILLINOIS FED. AID PROJECT		
• (26-0 & 26-1)RS-3, (26-2)RS-2				



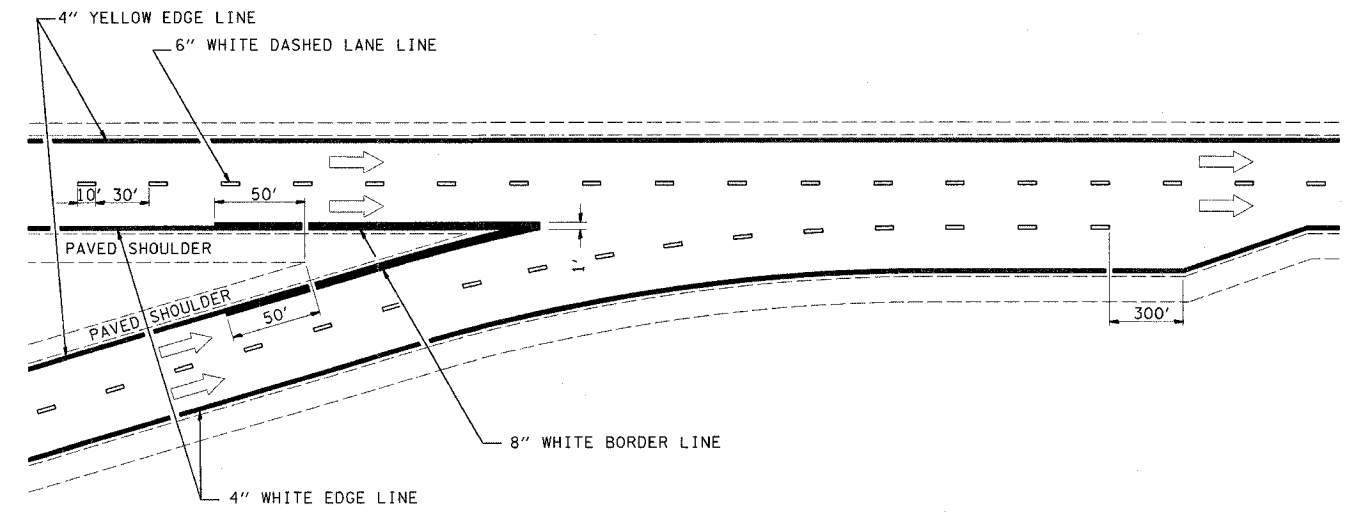
TYPICAL EXIT RAMP MARKING



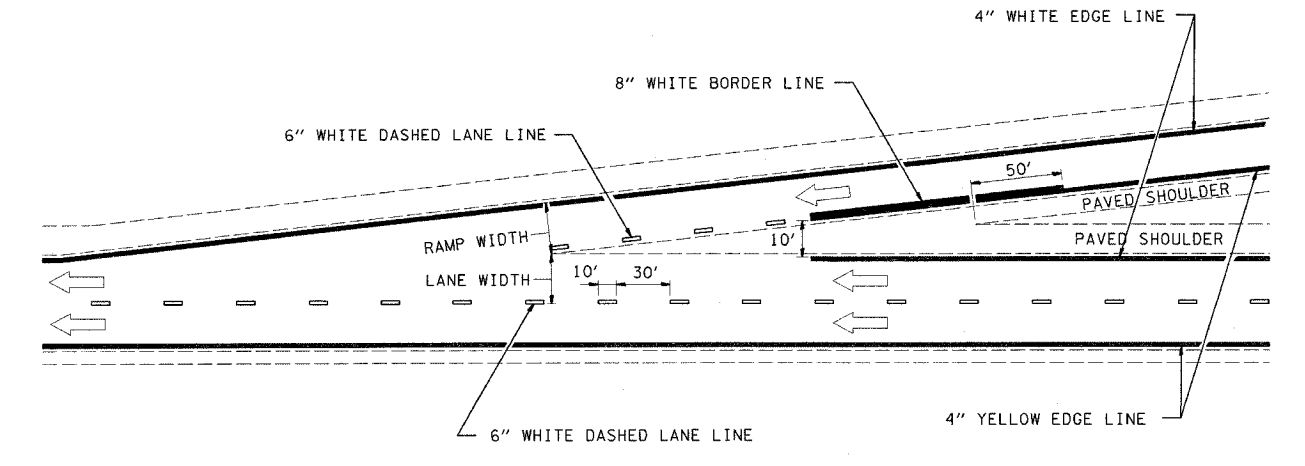
TYPICAL DIVERGENCE MARKING



TYPICAL CENTERLINE & EDGELINE MARKINGS



TYPICAL CONVERGENCE MARKING



TYPICAL ENTRANCE RAMP MARKING

NOT TO SCALE

REVISIONS	
NAME	DATE
MMO	12-99
DRM	08-04

ILLINOIS DEPARTMENT OF TRANSPORTATION
TYPICAL APPLICATIONS OF INTERCHANGE PAVEMENT MARKING

SCALE: VERT. HORIZ.
 DATE ISSUED: 05-01-96 DRAWN BY CHECKED BY

PLOT DATE = 10/24/2005
 FILE NAME = APLE14
 PLOT SCALE = AS SHOWN
 USER NAME = dlistroy