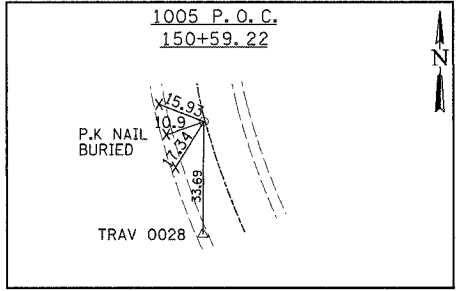
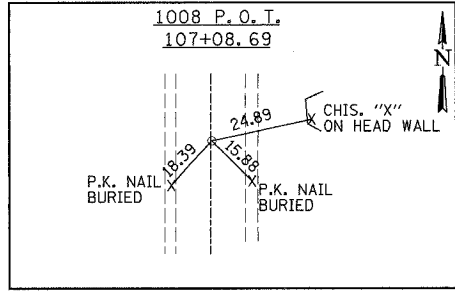
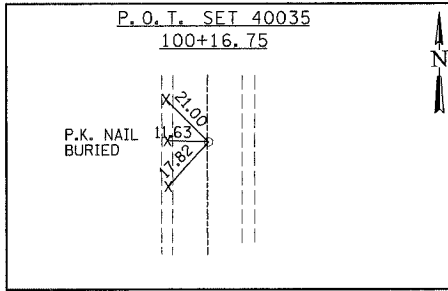
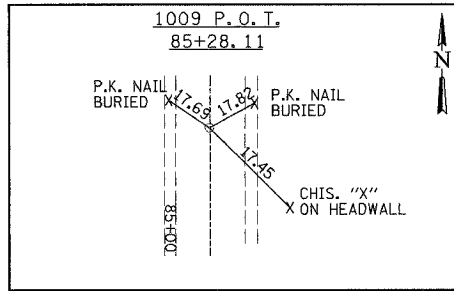
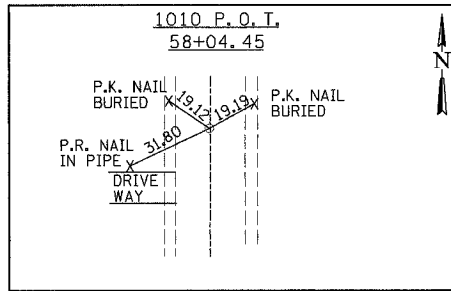
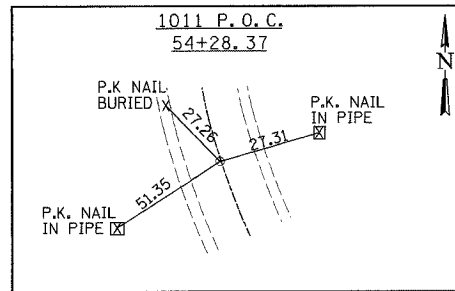
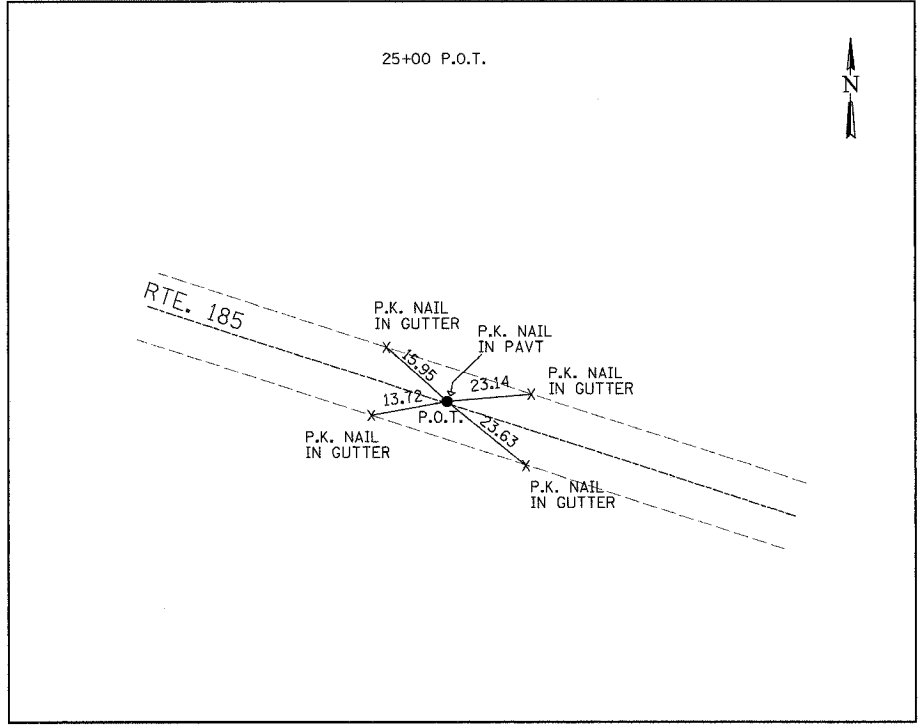
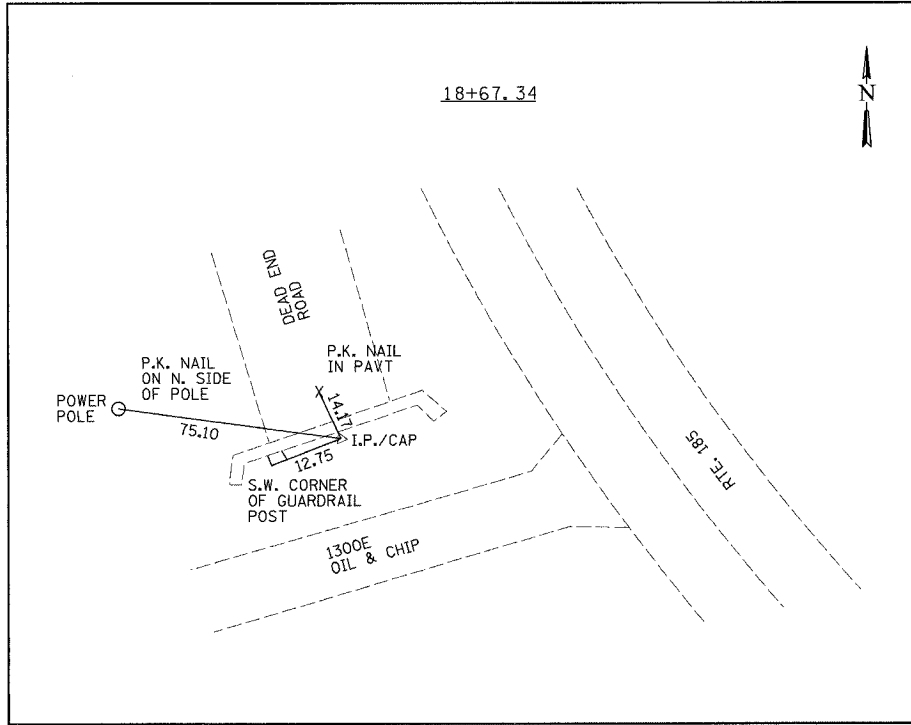
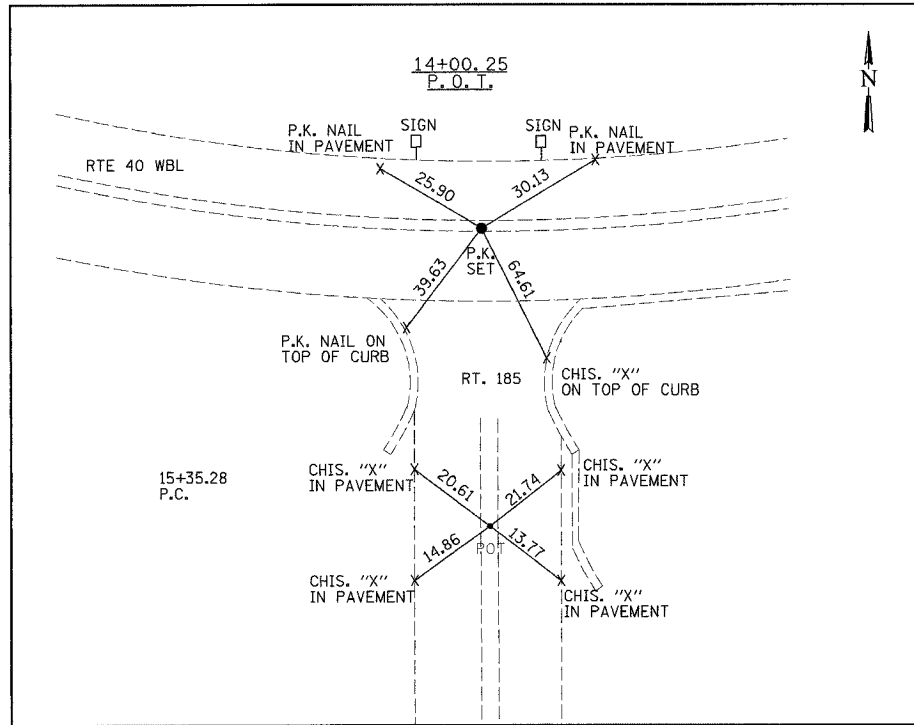


F.A.P. RTE.	SECTION	COUNTY	TOTAL SHEETS	SHEET NO.
750	(112) Y, WRS	FAYETTE	52	13
STA.		TO STA.		
FED. ROAD DIST. NO. 7		ILLINOIS		FED. AID PROJECT

CONTRACT NO. 74080

PLAN	SUBMITTED	DATE
NOTE BOOK NO.	PLOTTED	BY
	REVISIONS	
	BY	
	DATE	
	FILED	
	BY	
	DATE	
	FILED	
	BY	
	DATE	
	FILED	
	BY	
	DATE	
	FILED	



PLAN	SUBMITTED	DATE
NOTE BOOK NO.	PLOTTED	BY
	REVISIONS	
	BY	
	DATE	
	FILED	
	BY	
	DATE	
	FILED	
	BY	
	DATE	
	FILED	

REVISIONS	
NAME	DATE

ILLINOIS DEPARTMENT OF TRANSPORTATION  
**HORIZONTAL CONTROL**  
**3-POINT TIES**  
 F.A.P. 750 (IL. RTE. 185)  
 SECTION 112 - FAYETTE CO.

SCALE: DATE: September 23, 2005  
 DRAWN BY: CRO  
 CHECKED BY: RCY