

F.A.P. RTE.	SECTION	COUNTY	TOTAL SHEETS	SHEET NO.
750	(112) Y, WRS	FAYETTE	52	15
STA. 15+00		TO STA. 46+00		
FED. ROAD DIST. NO. 7 ILLINOIS FED. AID PROJECT				

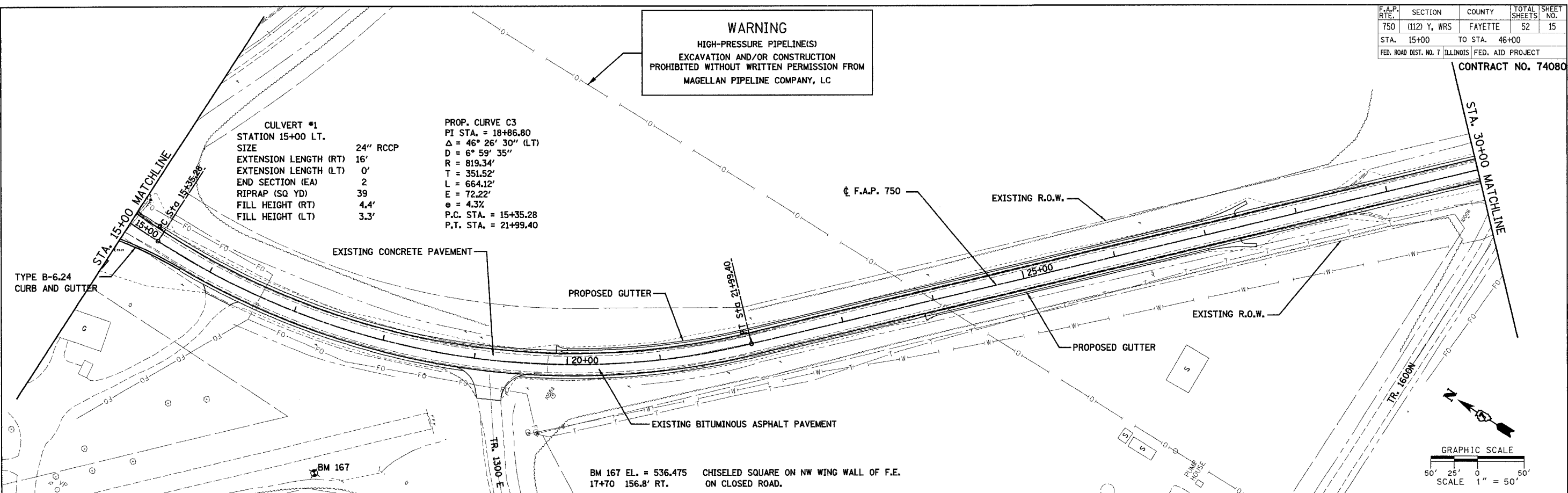
CONTRACT NO. 74080

WARNING
 HIGH-PRESSURE PIPELINE(S)
 EXCAVATION AND/OR CONSTRUCTION
 PROHIBITED WITHOUT WRITTEN PERMISSION FROM
 MAGELLAN PIPELINE COMPANY, LC

CULVERT #1
 STATION 15+00 LT.
 SIZE 24" RCCP
 EXTENSION LENGTH (RT) 16'
 EXTENSION LENGTH (LT) 0'
 END SECTION (EA) 2
 RIPRAP (SQ YD) 39
 FILL HEIGHT (RT) 4.4'
 FILL HEIGHT (LT) 3.3'

PROP. CURVE C3
 PI STA. = 18+86.80
 $\Delta = 46^\circ 26' 30''$ (LT)
 $D = 6^\circ 59' 35''$
 $R = 819.34'$
 $T = 351.52'$
 $L = 664.12'$
 $E = 72.22'$
 $e = 4.3\%$
 P.C. STA. = 15+35.28
 P.T. STA. = 21+99.40

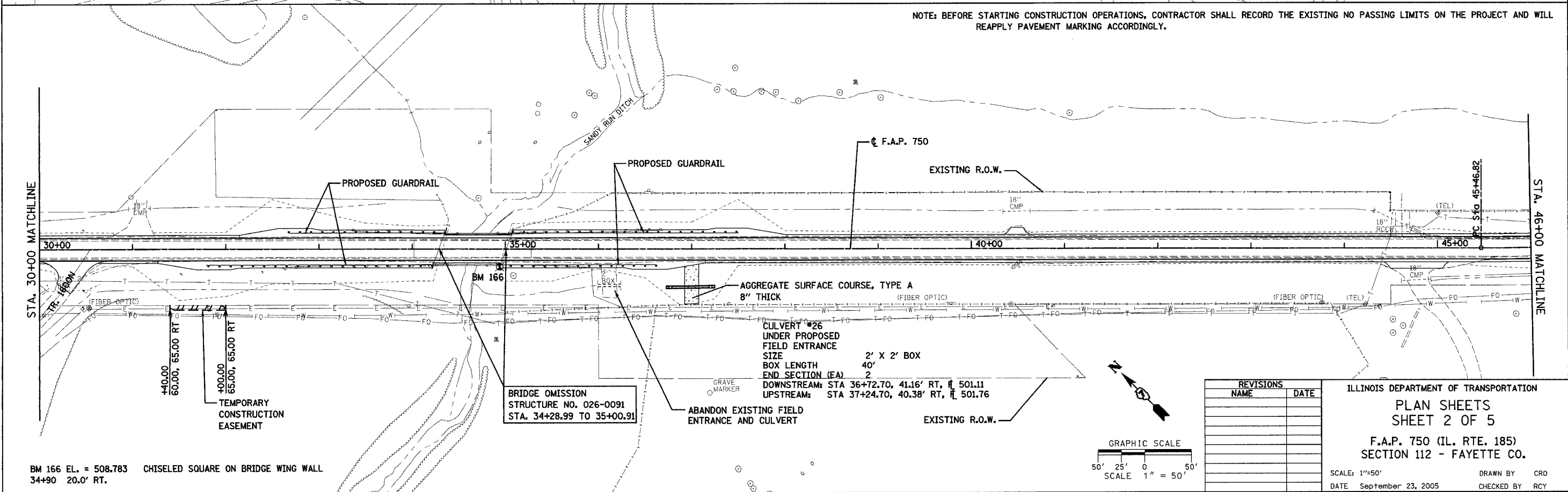
PLAN	SURVEYED	DATE
	PLOTTED	
	NOTED	
	CHECKED	
	FILED	
	NO.	



BM 167 EL. = 536.475 CHISELED SQUARE ON NW WING WALL OF F.E.
 17+70 156.8' RT. ON CLOSED ROAD.

NOTE: BEFORE STARTING CONSTRUCTION OPERATIONS, CONTRACTOR SHALL RECORD THE EXISTING NO PASSING LIMITS ON THE PROJECT AND WILL REAPPLY PAVEMENT MARKING ACCORDINGLY.

PLAN	SURVEYED	DATE
	PLOTTED	
	NOTED	
	CHECKED	
	FILED	
	NO.	



BRIDGE OMISSION
 STRUCTURE NO. 026-0091
 STA. 34+28.99 TO 35+00.91

ABANDON EXISTING FIELD
 ENTRANCE AND CULVERT

CULVERT #26
 UNDER PROPOSED
 FIELD ENTRANCE
 SIZE 2' X 2' BOX
 BOX LENGTH 40'
 END SECTION (EA) 2
 DOWNSTREAM: STA 36+72.70, 41.16' RT, \bar{r} 501.11
 UPSTREAM: STA 37+24.70, 40.38' RT, \bar{r} 501.76

BM 166 EL. = 508.783 CHISELED SQUARE ON BRIDGE WING WALL
 34+90 20.0' RT.

REVISIONS	NAME	DATE

ILLINOIS DEPARTMENT OF TRANSPORTATION
 PLAN SHEETS
 SHEET 2 OF 5
 F.A.P. 750 (IL. RTE. 185)
 SECTION 112 - FAYETTE CO.

SCALE: 1"=50'
 DATE September 23, 2005
 DRAWN BY CRO
 CHECKED BY RCY

J:\2003\030045\0002\civil\phase 1\k4p.dgn.plt:pl750_02.dgn 12:05:00 PM 9/21/2005