

F.A.P. RTE.	SECTION	COUNTY	TOTAL SHEETS	SHEET NO.
750	(112) Y, WRS	FAYETTE	52	16
STA. 46+00		TO STA. 78+00		
FED. ROAD DIST. NO. 7 ILLINOIS FED. AID PROJECT				

CONTRACT NO. 74080

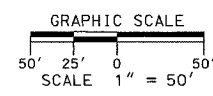
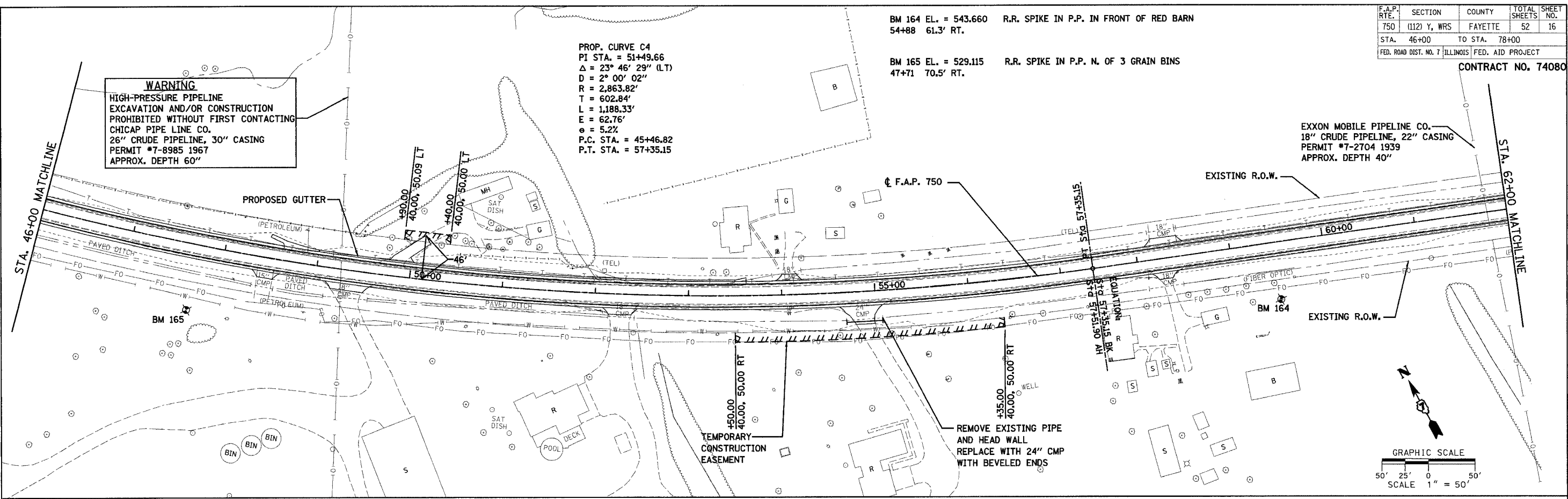
BM 164 EL. = 543.660 R.R. SPIKE IN P.P. IN FRONT OF RED BARN  
54+88 61.3' RT.  
  
BM 165 EL. = 529.115 R.R. SPIKE IN P.P. N. OF 3 GRAIN BINS  
47+71 70.5' RT.

PROP. CURVE C4  
PI STA. = 51+49.66  
 $\Delta = 23^{\circ} 46' 29''$  (LT)  
D = 2^{\circ} 00' 02''  
R = 2,863.82'  
T = 602.84'  
L = 1,188.33'  
E = 62.76'  
e = 5.2%  
P.C. STA. = 45+46.82  
P.T. STA. = 57+35.15

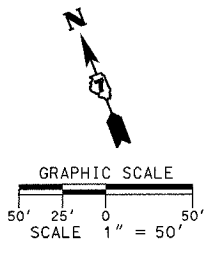
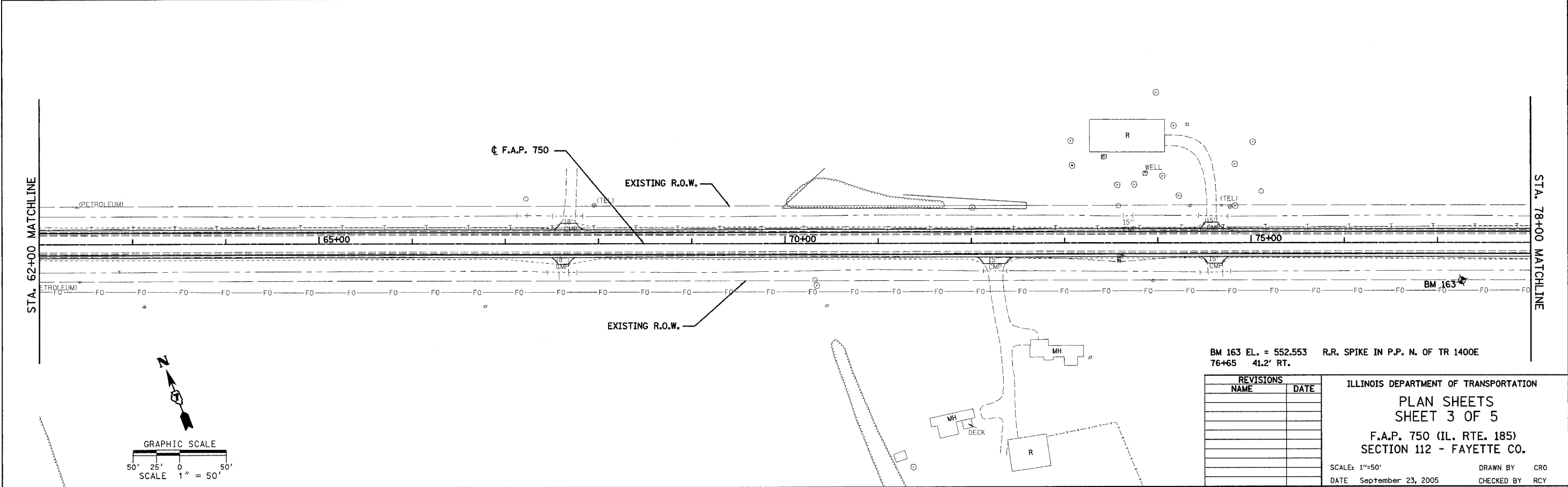
**WARNING**  
HIGH-PRESSURE PIPELINE  
EXCAVATION AND/OR CONSTRUCTION  
PROHIBITED WITHOUT FIRST CONTACTING  
CHICAP PIPE LINE CO.  
26" CRUDE PIPELINE, 30" CASING  
PERMIT #7-8985 1967  
APPROX. DEPTH 60"

EXXON MOBILE PIPELINE CO.  
18" CRUDE PIPELINE, 22" CASING  
PERMIT #7-2704 1939  
APPROX. DEPTH 40"

DATE	BY
DATE	BY
DATE	BY



DATE	BY
DATE	BY
DATE	BY



BM 163 EL. = 552.553 R.R. SPIKE IN P.P. N. OF TR 1400E  
76+65 41.2' RT.

REVISIONS	DATE

ILLINOIS DEPARTMENT OF TRANSPORTATION  
**PLAN SHEETS  
SHEET 3 OF 5**  
F.A.P. 750 (IL. RTE. 185)  
SECTION 112 - FAYETTE CO.  
SCALE: 1"=50' DRAWN BY: CRO  
DATE: September 23, 2005 CHECKED BY: RCY

I:\2003\030045\0002\civil\pbase\k-eg.dgn.plt(50.03.dgn) 9/21/2005 12:05:50 PM