

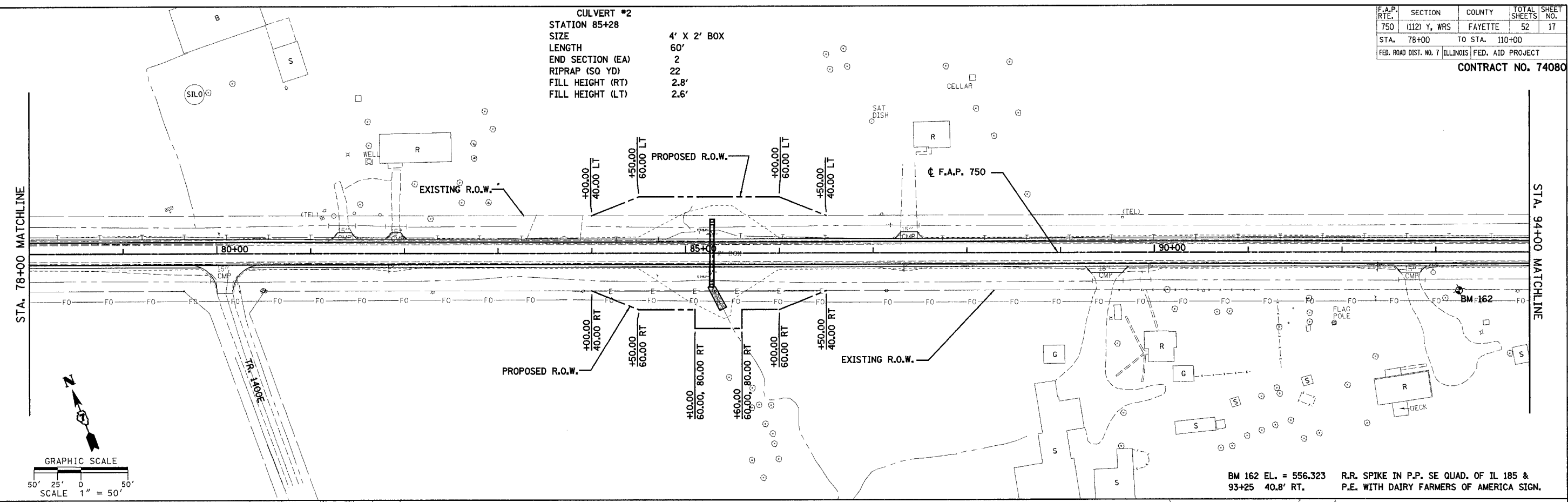
F.A.P. RTE.	SECTION	COUNTY	TOTAL SHEETS	SHEET NO.
750	(112) Y, WRS	FAYETTE	52	17
STA. 78+00		TO STA. 110+00		
FED. ROAD DIST. NO. 7 ILLINOIS FED. AID PROJECT				

CONTRACT NO. 74080

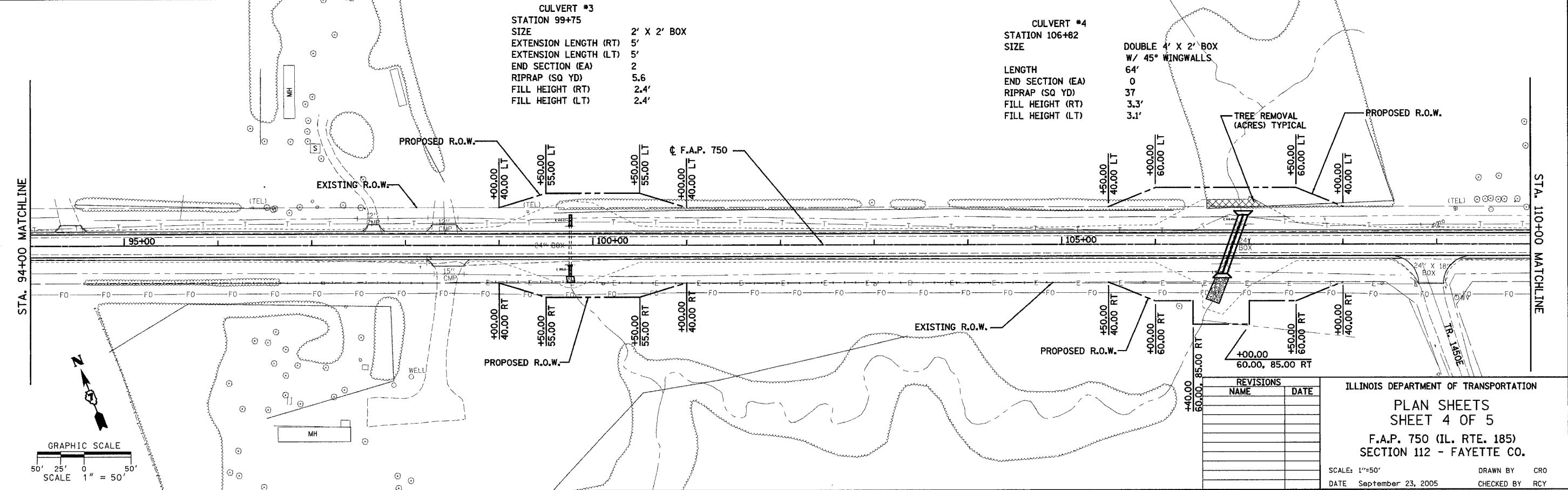
CULVERT #2
 STATION 85+28
 SIZE 4' X 2' BOX
 LENGTH 60'
 END SECTION (EA) 2
 RIPRAP (SQ YD) 22
 FILL HEIGHT (RT) 2.8'
 FILL HEIGHT (LT) 2.6'

CULVERT #3
 STATION 99+75
 SIZE 2' X 2' BOX
 EXTENSION LENGTH (RT) 5'
 EXTENSION LENGTH (LT) 5'
 END SECTION (EA) 2
 RIPRAP (SQ YD) 5.6
 FILL HEIGHT (RT) 2.4'
 FILL HEIGHT (LT) 2.4'

CULVERT #4
 STATION 106+82
 SIZE DOUBLE 4' X 2' BOX
 W/ 45° WINGWALLS
 LENGTH 64'
 END SECTION (EA) 0
 RIPRAP (SQ YD) 37
 FILL HEIGHT (RT) 3.3'
 FILL HEIGHT (LT) 3.1'



BM 162 EL. = 556.323 R.R. SPIKE IN P.P. SE QUAD. OF IL 185 & 93+25 40.8' RT. P.E. WITH DAIRY FARMERS OF AMERICA SIGN.



REVISIONS	NAME	DATE

ILLINOIS DEPARTMENT OF TRANSPORTATION
 PLAN SHEETS
 SHEET 4 OF 5
 F.A.P. 750 (IL. RTE. 185)
 SECTION 112 - FAYETTE CO.

SCALE: 1"=50'
 DATE September 23, 2005
 DRAWN BY CRO
 CHECKED BY RCY

DATE	
BY	
PLAN	
SURVEYED	
PLOTTED	
NOTED	
NOTE BOOK	
NO.	
FILE NAME	

DATE	
BY	
PLAN	
SURVEYED	
PLOTTED	
NOTED	
NOTE BOOK	
NO.	
FILE NAME	

J:\2003\030045\0002\civil\phase 1\kdp.dgn.plt(750_04.dgn) 9/21/2005 12:05:51 PM