

F.A.P. RTE.	SECTION	COUNTY	TOTAL SHEETS	SHEET NO.
750	(112) Y, WRS	FAYETTE	52	24
STA.		TO STA.		
FED. ROAD DIST. NO. 7		ILLINOIS	FED. AID PROJECT	

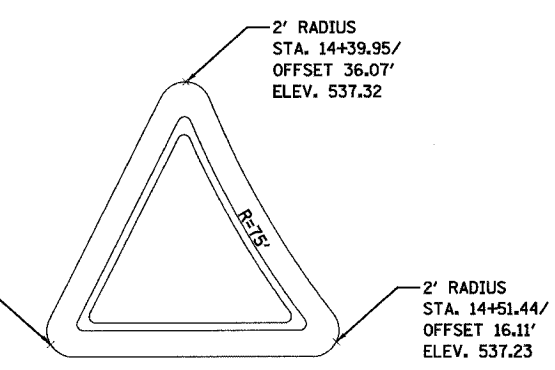
CONTRACT NO. 74080

PLAN	DATE
BY	
APPROVED	
PLotted	
NOTE BOOK	
NO.	

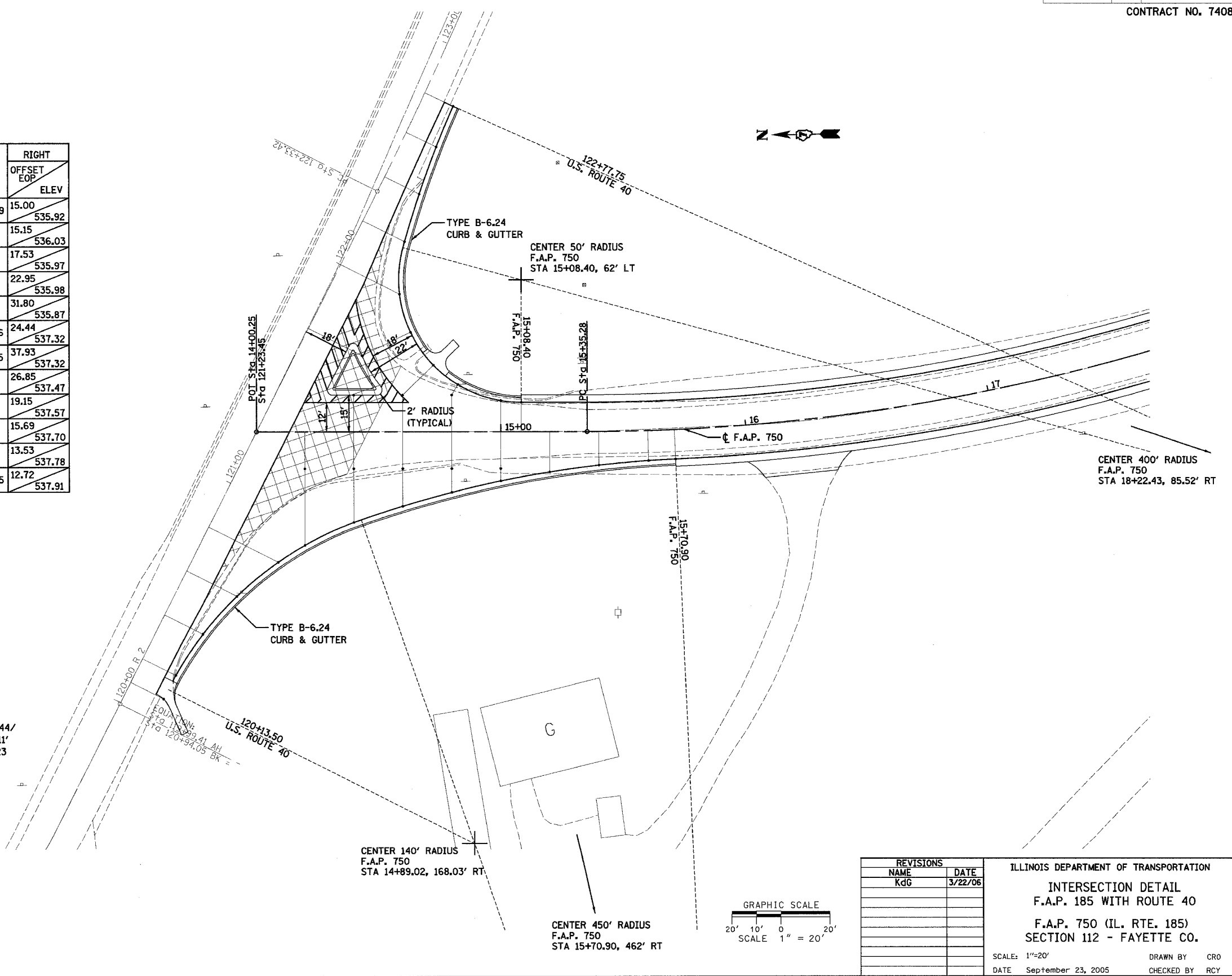
PLAN	DATE
BY	
APPROVED	
PLotted	
NOTE BOOK	
NO.	

F.A.P. 750	LEFT	RIGHT	RIGHT
	OFFSET EOP	OFFSET EOP	OFFSET EOP
	ELEV	ELEV	ELEV
14+20		15.00	46.23
		537.02	536.13
14+40	15.00	15.00	36.89
	537.17	537.17	536.77
14+60	15.00	15.00	30.27
	537.32	537.46	537.33
14.72.53	27.17		
	537.23		
14+80	15.00	15.00	24.68
	537.47	537.74	537.76
14+82.54	19.20		
	537.42		
15+00	12.71	15.00	20.08
	537.66	538.04	538.10
15+08.40	12.00		
	537.71		
15+20			16.42
			538.36
15+40			13.69
			538.66
15+60			12.21
			538.93
15+70.90			12.00
			539.07

U.S. ROUTE 40	RIGHT
	OFFSET EOP
	ELEV
120+09.69	15.00
	535.92
120+20	15.15
	536.03
120+40	17.53
	535.97
120+60	22.95
	535.98
120+80	31.80
	535.87
121+70.66	24.44
	537.32
121+88.05	37.93
	537.32
122+00	26.85
	537.47
122+20	19.15
	537.57
122+40	15.69
	537.70
122+60	13.53
	537.78
122+77.75	12.72
	537.91



MEDIAN DETAIL

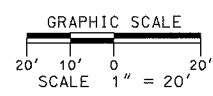


REVISIONS	
NAME	DATE
KdG	3/22/06

ILLINOIS DEPARTMENT OF TRANSPORTATION  
**INTERSECTION DETAIL**  
**F.A.P. 185 WITH ROUTE 40**  
**F.A.P. 750 (IL. RTE. 185)**  
**SECTION 112 - FAYETTE CO.**

SCALE: 1"=20'  
DATE September 23, 2005

DRAWN BY CR0  
CHECKED BY RCY



8/05/31 AM 3/24/2006 J:\2003\030045\0002\civil\phase 1\kdp\dgm\pl-det\ill750-01.dgn