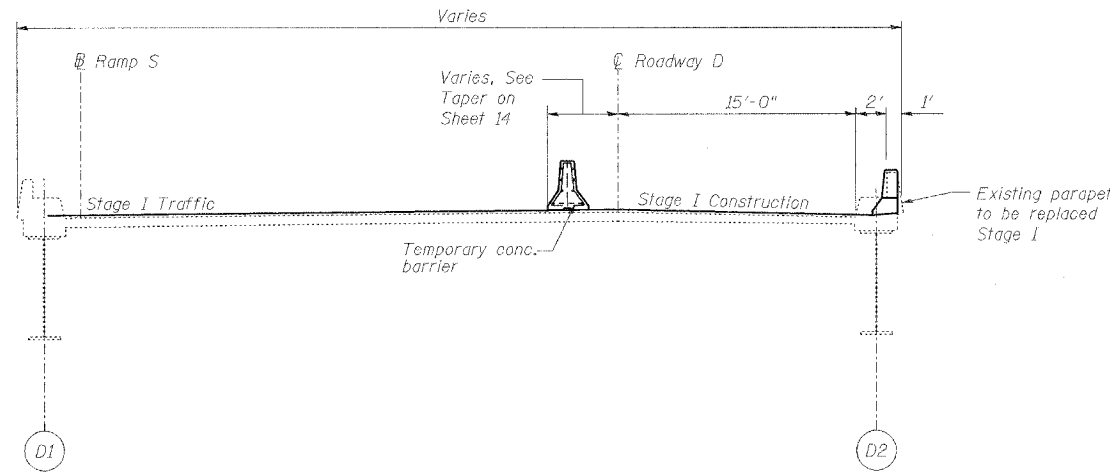
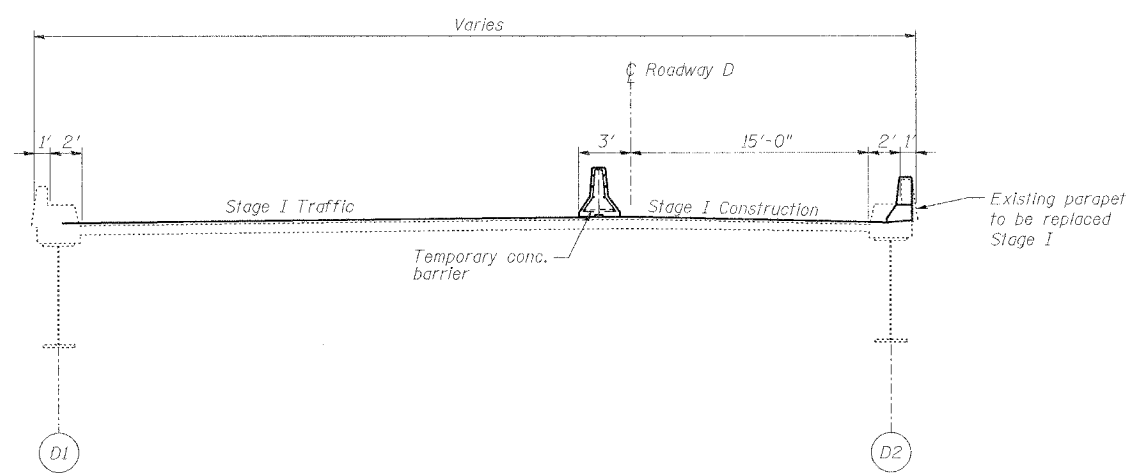


ROUTE NO.	SECTION	COUNTY	TOTAL SHEETS	SHEET NO.
F.A.I. 70	*	ST. CLAIR	111	16
FED. ROAD DIST. NO. 7	ILLINOIS	FED. AID PROJECT- 115-70		

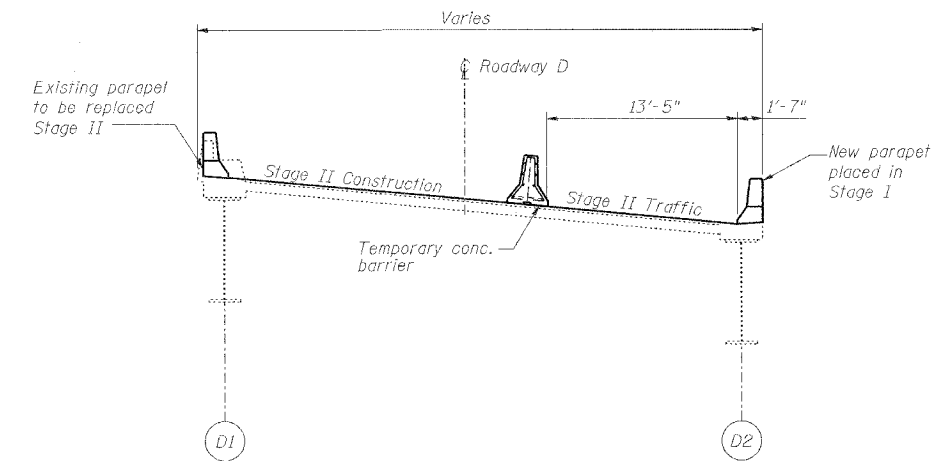
\* 82-3HVB-3R-3  
CONTRACT NO. 76305



1 STAGE I RAMP D @ SPAN D39  
(Looking South)



2 STAGE I RAMP D @ SPAN D40-D45  
(Looking South)



3 STAGE II RAMP D TYPICAL SECTION  
(Looking South)

DATE: 4/2/2006  
FILENAME: P:\2001\1901-1900\20011240\drafting\roadway\rehab\_ds\ds\_traffic\ds\_sections\ds\_sections.dgn

DESIGNED	ID01
CHECKED	JEL
DRAWN	IMG
CHECKED	JEL

REVISIONS	
NAME	DATE

STAGES I AND II SECTIONS

STATE OF ILLINOIS  
DEPARTMENT OF TRANSPORTATION  
REHABILITATION AND RETROFIT REPAIRS  
FAI ROUTE 70  
POPLAR STREET BRIDGE APPROACHES  
ST. CLAIR COUNTY

STRUCTURE NO.  
SCALE: N.T.S.  
DATE: 02/28/2006