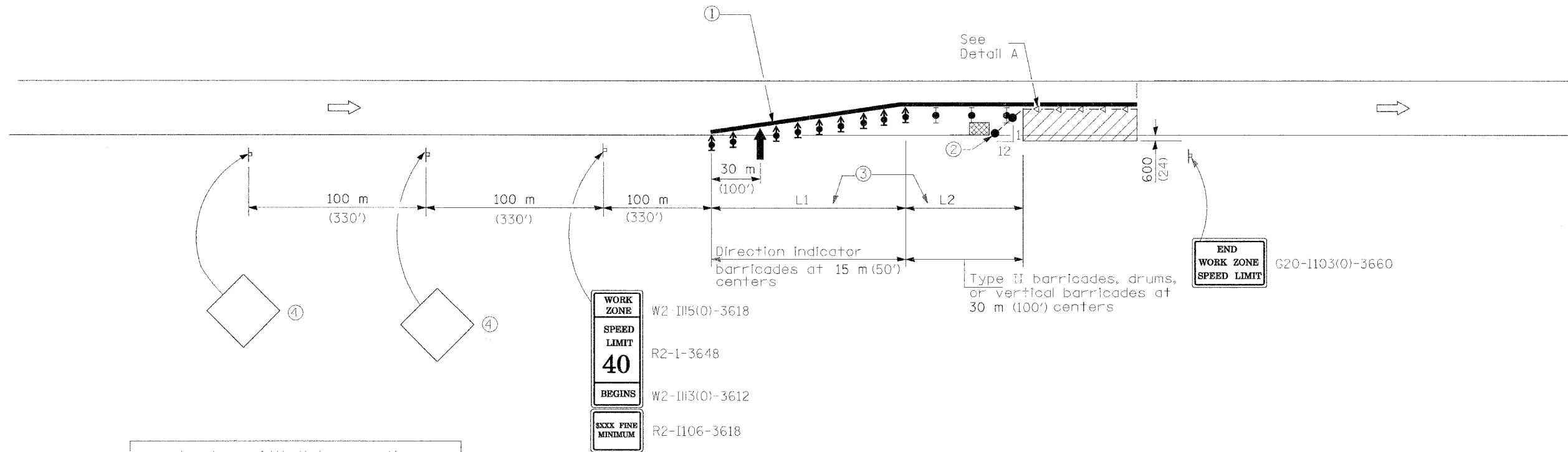


ROUTE NO.	SECTION	COUNTY	TOTAL SHEETS	SHEET NO.
F.A.I. 70	*	ST. CLAIR	111	17
FED. ROAD DIST. NO. 7	ILLINOIS	FED. AID PROJECT - 24-72		

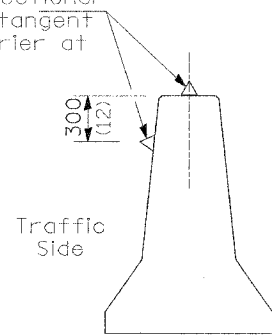
\* 82-3HVB-3R-3  
CONTRACT NO. 76305



L = lane width X taper ratio

Normal Posted Speed		Taper Ratio
km/h	mph	
90	55	55/1
80	45	45/1

Type C monodirectional reflectors on tangent portion of barrier at 15 m (50') cts.



DETAIL A  
(BARRIER WALL REFLECTORS)

**SYMBOLS**

- Arrow board
- Work area
- Sign
- Direction indicator barricade with steady burn monodirectional light
- Type II barricade, drum, or vertical barricade with steady burn monodirectional light
- Temporary concrete barrier
- Type C Monodirectional reflector
- Vertical panel with steady burn monodirectional light
- Impact attenuator

- ① Reflectorized temporary pavement marking tape shall be placed throughout the taper and work area as indicated on the plan sheets. In addition, the bottom 6" of the temporary concrete barrier shall be painted white for right lane closures and yellow for left lane closures. The edge line shall be white for right lane closures and yellow for left lane closures.
- ② Vertical panels at 7.6 m (25') centers with steady burn monodirectional lights.
- ③ See traffic control plan sheet for geometry approaching work zone and values for L1 and L2.
- ④ See Signage Key Plan Sheets for sign type.

**GENERAL NOTES**

This standard is used where at any time a ramp tapers from its original width for day light operation exceeding one day and where temporary concrete barrier is utilized.

This standard also applies when work is being performed on the left side of the ramp.

All dimensions are in millimeters (inches) unless otherwise shown.

**TRAFFIC CONTROL AND PROTECTION-SPECIAL**

REVISIONS	
NAME	DATE

STATE OF ILLINOIS  
DEPARTMENT OF TRANSPORTATION  
REHABILITATION AND RETROFIT REPAIRS  
FAI ROUTE 70  
POPLAR STREET BRIDGE APPROACHES  
ST. CLAIR COUNTY

STRUCTURE NO.  
SCALE: N.T.S.  
DATE: 02/28/2006

DATE: 4/19/2006 FILENAME: P:\2001\1201-1300\2001.1240\drafting\roadwayrehab.ds\trafcont\ds\trafspecial.dgn

DESIGNED	IDOT
CHECKED	JEL
DRAWN	IMG
CHECKED	JEL