

PLAN
FINGER JT. @ PIER D40
* - At 50° F

CROSS SLOPE

Location	Span D39	Span D40
Crown to D1	-1.74%	-1.63%
Crown to D2	-1.18%	-1.34%

Min Bar Laps	d			f		
	-30°F	50°F	130°F	-30°F	50°F	130°F
#4 1'-8"	15 3/4"	12 3/4"	9 3/4"	8"	5"	2"

Notes:
All steel for finger plate joint shall be M270 Grade 50. Curb plates and parapet not shown for clarity.
Slope trough 1"/ft towards outside from center of ramp cross-section. Details of trough at center splice and at both ends per Sht. S36
Adjust height of stool as required by shimming. Shim to be 1/8", 1/4", or 1/2" as required. Standard shim pack to include 1/2", 1/4", 1/8" and (2) 1/16" shims.
See sheet S-27 of 44 (variable width) for roadway crown & cross-slope information.

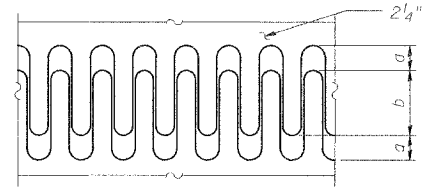
BILL OF MATERIAL

Bar	No.	Size	Length	Shape
a ₃₀₀ (E)	12	#5	15'-6"	—
a ₃₀₁ (E)	12	#5	31'-6"	—
b ₃₀₀ (E)	94	#4	4'-5"	C
Reinforcing Bars, Epoxy Coated			Pound	870
Bar Splicer			Ea.	12
Fabric Reinforced Elastomeric Trough			Foot	54
Concrete Removal			Cu. Yd.	8.7
Concrete Superstructure			Cu. Yd.	8.7

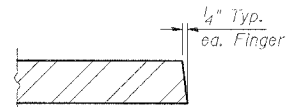
FINGER PLATE CUTTING DETAIL

a	b		
	-30°F	50°F	130°F
6 3/4"	3 3/4"	3/4"	1 1/2"
			4 1/2"
			7 1/2"

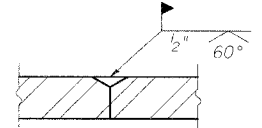
Note: For deck temperatures between those shown, interpolate between dimensions given above.



FINGER PLATE SETTING DIAGRAM



SECTION D

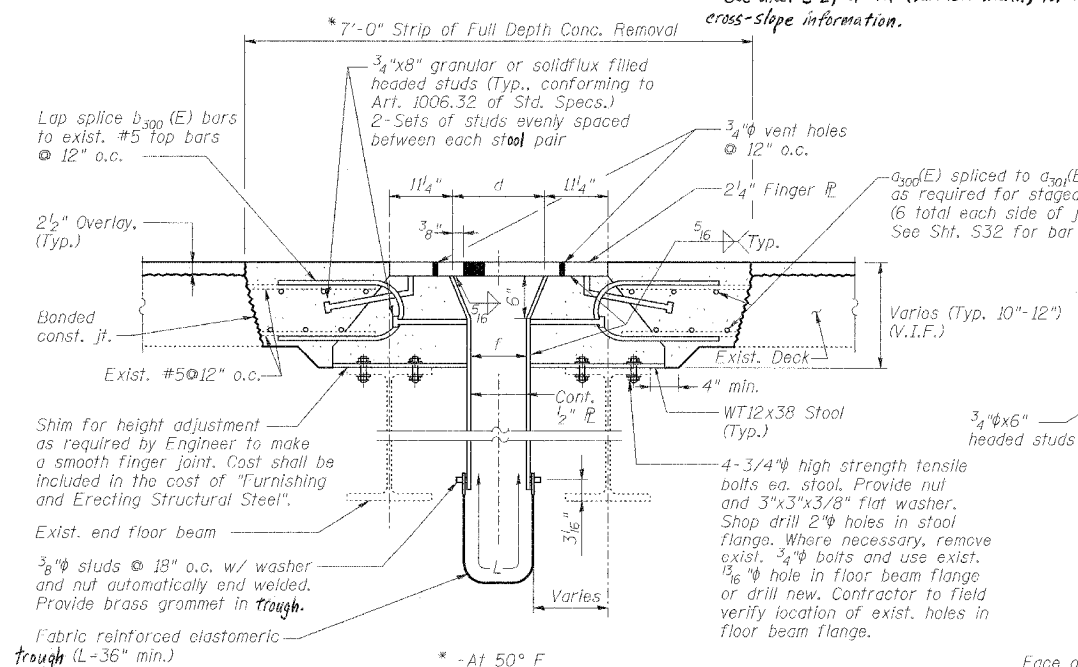


SECTION E

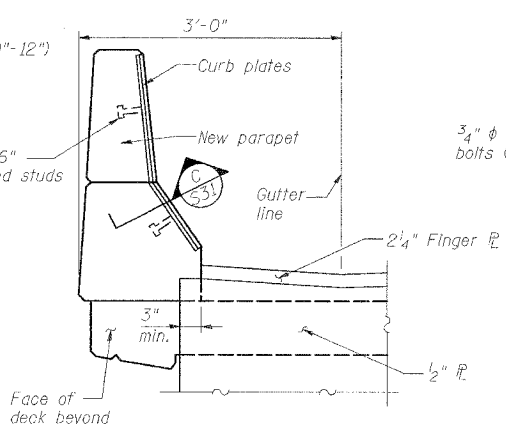
THEORETICAL STOOL HEIGHTS*

Stool No.	Span D39	Span D40
1-5	8 1/2"	8 3/4"
6-7	8 1/2"	8"
8-16	8 1/8"	8"
17-18	8 1/8"	8"
19-23	8 1/2"	8 3/4"
D1	12 3/8"	10"
D2	10"	9 1/8"

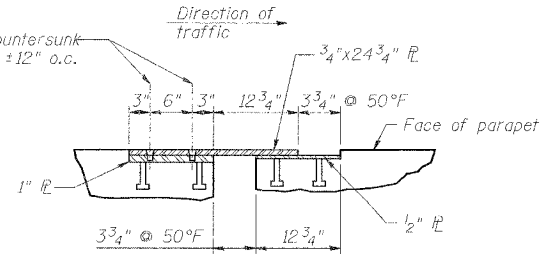
*Must be field verified prior to fabrication



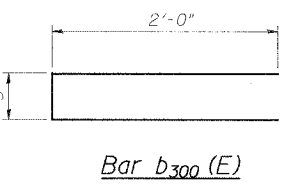
SECTION A



SECTION B



SECTION C



Bar b₃₀₀ (E)

SPECIAL JOINT DETAILS

REVISIONS	
NAME	DATE

STATE OF ILLINOIS
DEPARTMENT OF TRANSPORTATION
REHABILITATION AND RETROFIT REPAIRS
FAI ROUTE 70
POPLAR STREET BRIDGE APPROACHES
ST. CLAIR COUNTY

STRUCTURE NO. 082-0142 (RAMP S)
SCALE:
DATE: 02/28/2006

DATE: 4/19/2006 FILENAME: P:\2001\1201-1300\1201-1240\drafting\roadwayrehab\ds\rampl\join_d-joint08.dgn

DESIGNED	JPD
CHECKED	CSD
DRAWN	CLK
CHECKED	JPD