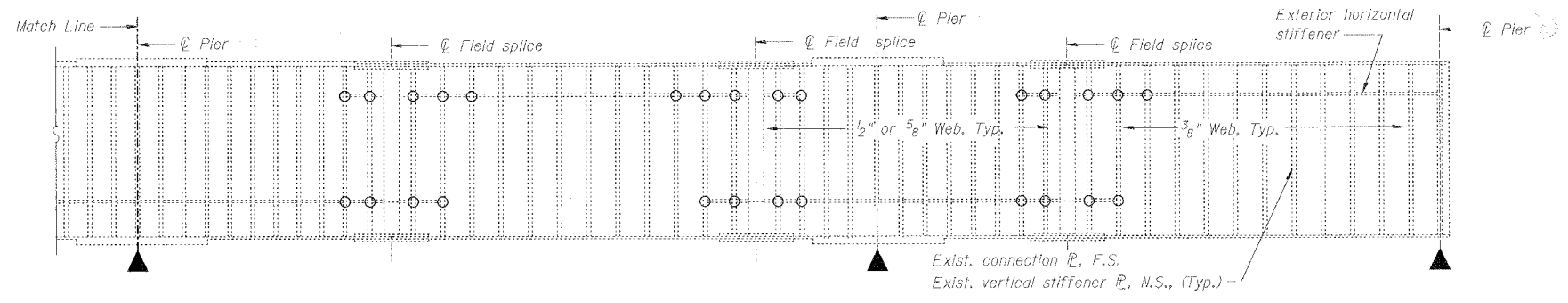
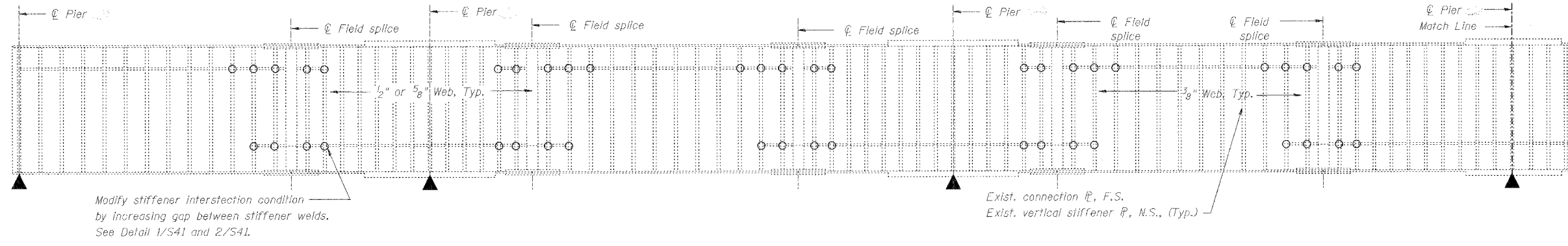


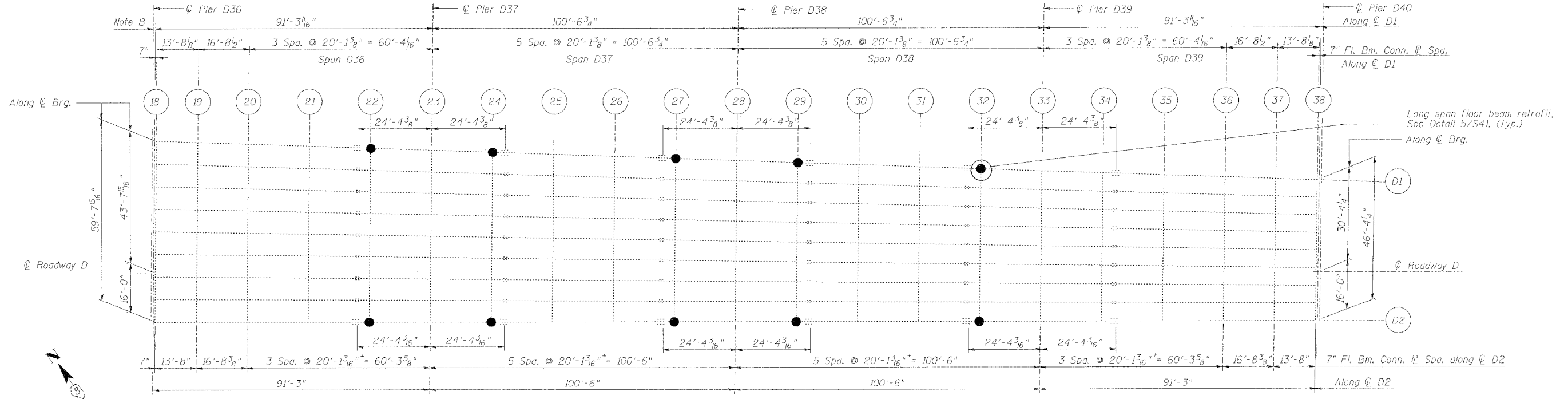
| | | | | |
|-----------------------|----------|--------------------------|--------------------|-----------|
| ROUTE NO. | SECTION | COUNTY | TOTAL SHEETS | SHEET NO. |
| F.A.I. 70 | * | ST. CLAIR | 111 | 63 |
| FED. ROAD DIST. NO. 7 | ILLINOIS | FED. AID PROJECT - 1M-70 | | |
| * 82-3HVB-3R-3 | | | SHEET S-40 OF S-44 | |
| CONTRACT NO. 76305 | | | | |



| BILL OF MATERIAL | | |
|-------------------------------------|------|----------|
| ITEM | UNIT | QUANTITY |
| Stiffener intersection modification | Ea. | 432 |
| Long span floor beam retrofit | Ea. | 10 |
| Crack Extension Modifications | Ea. | 20 |

1
S40 GIRDER 2 ELEVATION INDICATING TYPICAL FATIGUE RETROFIT LOCATIONS FOR FIVE-SPAN CONTINUOUS UNIT
GIRDER 1 - OPPOSITE HAND

Note A: Fatigue retrofit locations also apply to two, three, and four-span continuous units.



Note B: Dimensions shown are along length of girder

2
S40 FRAMING PLAN OF SPANS D36 - D39
SHOWING LONG SPAN FLOOR BEAM RETROFIT LOCATIONS

| REVISIONS | |
|-----------|------|
| NAME | DATE |
| | |
| | |
| | |
| | |

FATIGUE RETROFIT
STATE OF ILLINOIS
DEPARTMENT OF TRANSPORTATION
REHABILITATION AND RETROFIT REPAIRS
FAI ROUTE 70
POPLAR STREET BRIDGE APPROACHES
ST. CLAIR COUNTY
STRUCTURE NO. 082-0144 (ROADWAY D)
SCALE: N.T.S.
DATE: 02/28/2006

DATE: 4/19/2006
FILENAME: p:\2001\2001-1800\2001.1240\drafting\roadwayrehab_ds\rampd\fatigue\d-fat01.dgn
DESIGNED: DDC
CHECKED: JCM
DRAWN: CLK
CHECKED: DDC