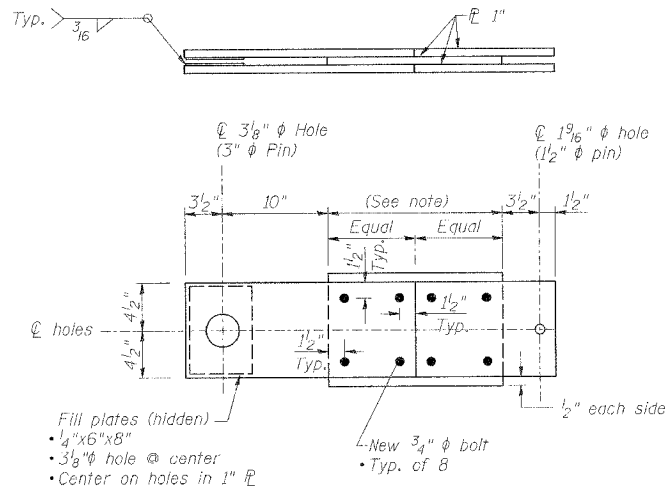


**1**  
S42  
**DETAIL - LINKS AND BEARINGS**

**Notes:**

- Center bearings on existing bearing stiffeners.
- Design of bearings, connections to girders and columns, and any pedestals, fill plates, or other items needed to satisfy the bearing performance requirement given in the special provisions, is the responsibility of the contractor.
- For additional requirements, See Sheet S-44

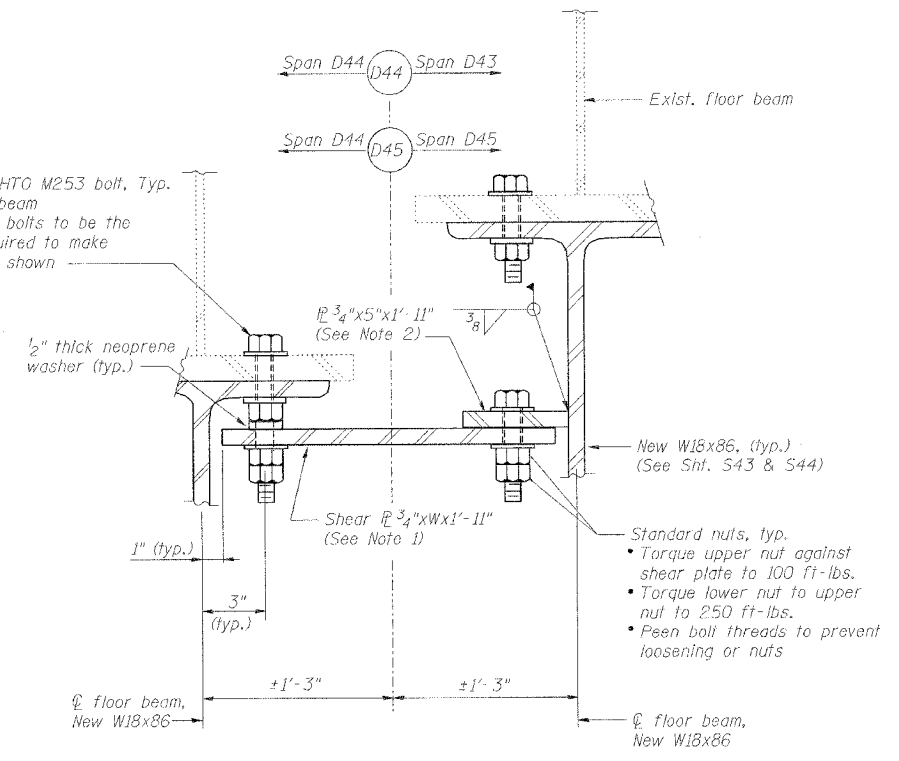


**3**  
S42  
**CONNECTOR LINK DETAIL - PIER D44**

Total 2 such links

**Notes:**

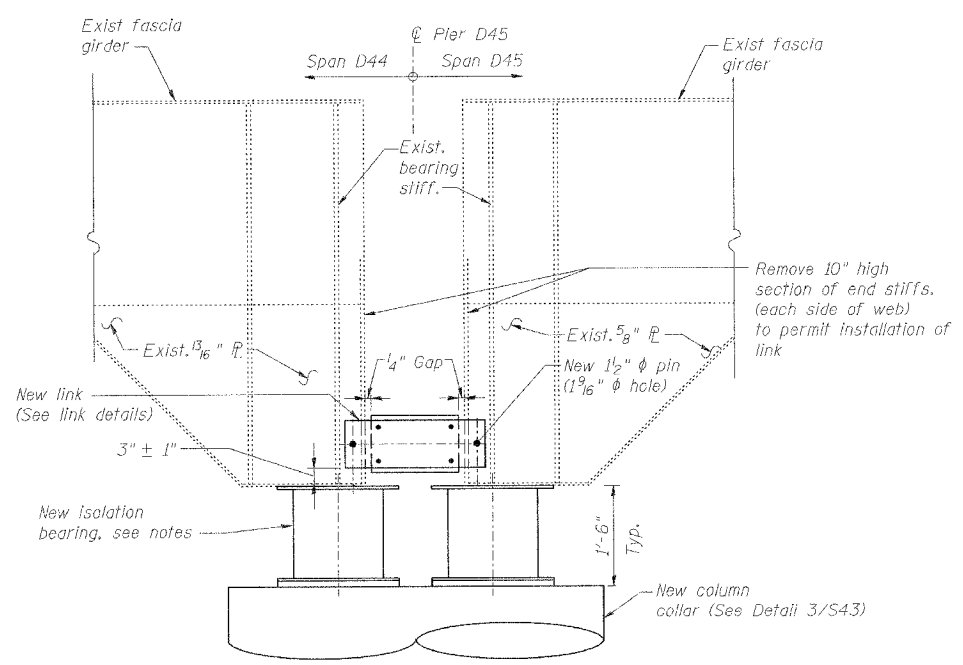
This dimension to be 1/2" less than clear distance between ends of girders at time of erection.



**5**  
S42  
**SHEAR LINK DETAILS - PIERS D44 AND D45**

**Notes:**

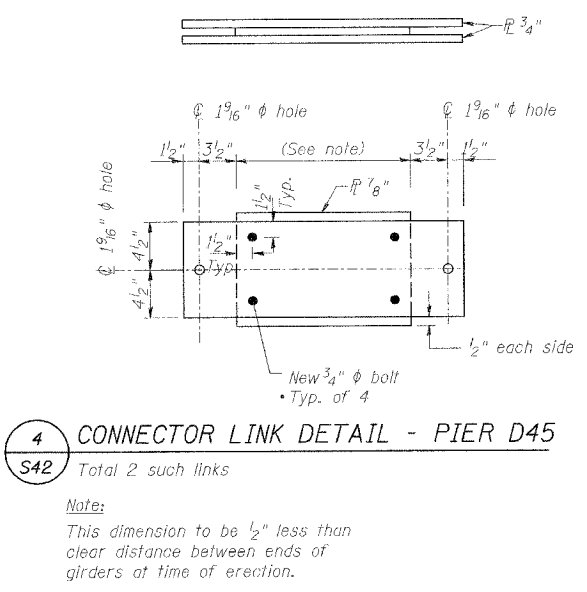
- Plate width (W) shall be 2" less than the distance between floor beam centerlines at the time of installation.
- Connection plate shall be centered on shear plate, which in turn, shall be centered on a group of 4, W18 connection bolts on the opposite side of the pier centerline. The connection plate shall be connected to the shear plate with 4-7/8" AASHTO M164 bolts @ 6" o.c., with 2" minimum edge distance on each plate.
- Three such links at Pier D44 (at least one link each side of Roadway) Two such links at Pier D45 (at least one link each side of Roadway)
- Locate link within 10' of column.



**2**  
S42  
**DETAIL - LINKS AND BEARINGS**

**Notes:**

- Center bearings on existing bearing stiffeners.
- Design of bearings, connections to girders and columns, and any pedestals, fill plates, or other items needed to satisfy the bearing performance requirement given in the special provisions, is the responsibility of the contractor.
- For additional requirements, See Sheet S-44



**4**  
S42  
**CONNECTOR LINK DETAIL - PIER D45**

Total 2 such links

**Notes:**

This dimension to be 1/2" less than clear distance between ends of girders at time of erection.

DATE: 4/19/2006 FILENAME: p:\2001\1201-1300\2001.1240\drafting\roadwayrehab\_dbs\randp\isol\1-d-isol01.dgn

DESIGNED	HH
CHECKED	JEL
DRAWN	CLK
CHECKED	JEL

REVISIONS	
NAME	DATE

**SEISMIC ISOLATION DETAILS**

STATE OF ILLINOIS  
DEPARTMENT OF TRANSPORTATION  
REHABILITATION AND RETROFIT REPAIRS  
FAI ROUTE 70  
POPLAR STREET BRIDGE APPROACHES  
ST. CLAIR COUNTY

STRUCTURE NO. 082-0144 (ROADWAY D)  
SCALE: N.T.S.  
DATE: 02/28/2006