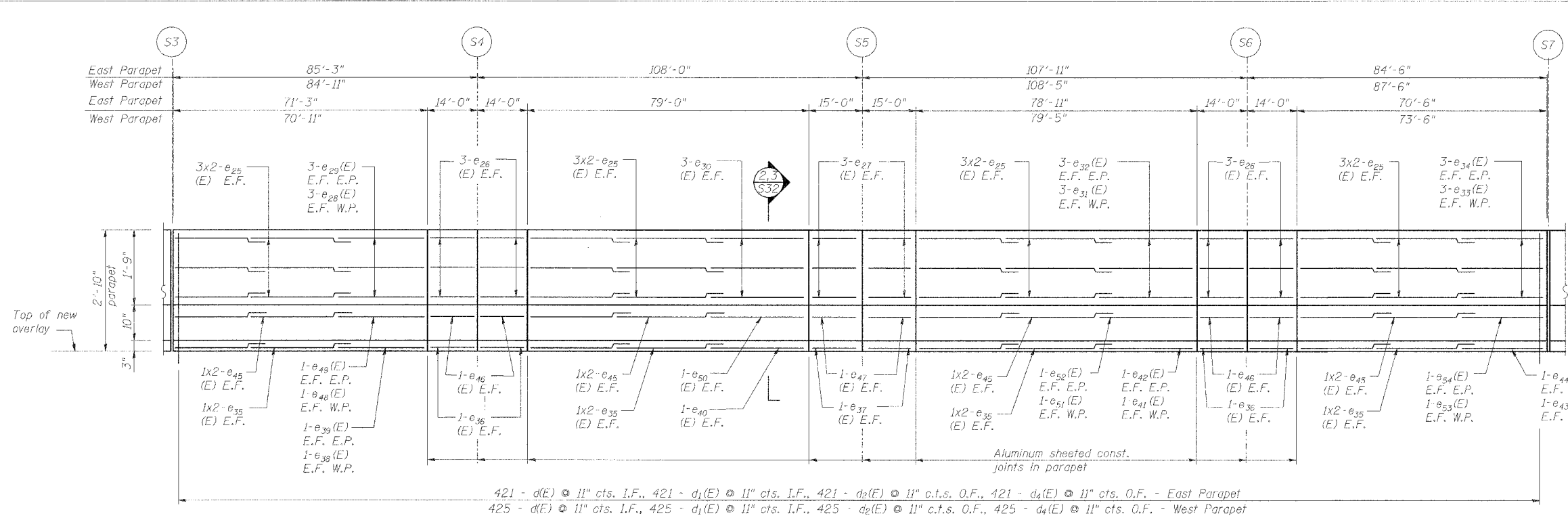


ROUTE NO.	SECTION	COUNTY	TOTAL SHEETS	SHEET NO.
F.A.I. 70	*	ST. CLAIR	111	83
FED. ROAD DIST. NO. 7	ILLINOIS	FED. AID PROJECT 14-70		

\* 82-3HVB-3R-3 SHEET 5-16 OF S-44  
CONTRACT NO. 763005

**SUPERSTRUCTURE BILL OF MATERIAL**

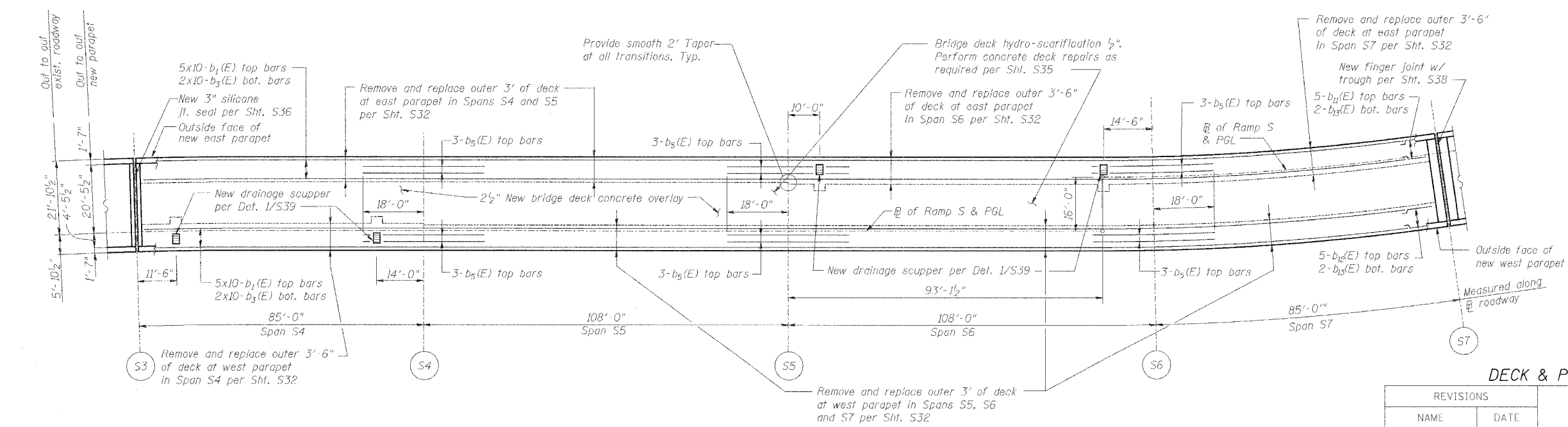
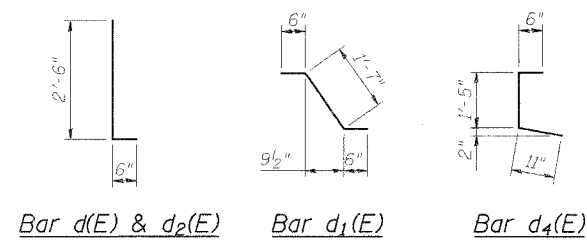
Bar	No.	Size	Length	Shape
$\sigma_{30}(E)$	16	#5	2'-0"	
$\sigma_{35}(E)$	100	#5	3'-0"	
$b_1(E)$	100	#5	40'-0"	
$b_2(E)$	40	#5	40'-0"	
$b_3(E)$	18	#6	36'-0"	
$d_{11}(E)$	5	#5	7'-1"	
$d_{12}(E)$	5	#5	10'-3"	
$d_{13}(E)$	2	#5	7'-1"	
$d_{14}(E)$	2	#5	10'-3"	
$d(E)$	846	#5	3'-0"	
$d_1(E)$	846	#5	2'-7"	
$d_2(E)$	846	#4	3'-0"	
$d_4(E)$	846	#4	2'-10"	
$e_{25}(E)$	96	#4	35'-0"	
$e_{26}(E)$	48	#4	13'-9"	
$e_{27}(E)$	24	#4	14'-9"	
$e_{28}(E)$	6	#4	4'-0"	
$e_{29}(E)$	6	#4	4'-4"	
$e_{30}(E)$	12	#4	12'-1"	
$e_{31}(E)$	6	#4	12'-6"	
$e_{32}(E)$	6	#4	12'-0"	
$e_{33}(E)$	6	#4	6'-7"	
$e_{34}(E)$	6	#4	3'-7"	
$e_{35}(E)$	32	#5	35'-0"	
$e_{36}(E)$	16	#5	13'-9"	
$e_{37}(E)$	8	#5	14'-9"	
$e_{38}(E)$	2	#5	5'-0"	
$e_{39}(E)$	2	#5	5'-4"	
$e_{40}(E)$	4	#5	13'-1"	
$e_{41}(E)$	2	#5	13'-6"	
$e_{42}(E)$	2	#5	13'-0"	
$e_{43}(E)$	2	#5	7'-7"	
$e_{44}(E)$	2	#5	4'-7"	
$e_{45}(E)$	32	#8	35'-0"	
$e_{46}(E)$	16	#8	13'-9"	
$e_{47}(E)$	8	#8	14'-9"	
$e_{48}(E)$	2	#8	9'-8"	
$e_{49}(E)$	2	#8	10'-0"	
$e_{50}(E)$	4	#8	17'-9"	
$e_{51}(E)$	2	#8	18'-2"	
$e_{52}(E)$	2	#8	17'-8"	
$e_{53}(E)$	2	#8	12'-3"	
$e_{54}(E)$	2	#8	9'-3"	
Reinforcement Bars, Epoxy Coated	Pound	24,780		
Concrete Removal	Cu. Yd.	194.2		
Concrete Superstructure	Cu. Yd.	176.2		
Bituminous Concrete Removal - (Deck)	Sq. Yd.	947		
Bridge Deck Hydro-Scarification - 1/2"	Sq. Yd.	947		
Bridge Deck Microsilica Concrete Overlay - 2 1/2"	Sq. Yd.	1,072		
Drainage Scuppers - DS12	Ea.	4		
Protective Coat	Sq. Yd.	1,704		
Bridge Deck Grooving	Sq. Yd.	1,072		
Protective Shield	Sq. Yd.	190		
Mechanical Splice	Ea.	84		



**INSIDE ELEVATION OF EAST PARAPET**

West Parapet similar except as noted  
All dimensions measured along bottom of inside face of parapet  
E.F. indicates each face  
I.F. indicates inside face  
O.F. indicates outside face

#4	1'-8"
#5	2'-2"
#6	2'-7"
#8	4'-6"



**DECK PLAN OF SPANS S4 - S7**

Reinforcement bars designated (E) shall be epoxy coated.

**DECK & PARAPET REPAIRS - SPANS S4 - S7**

REVISIONS	
NAME	DATE

STATE OF ILLINOIS  
DEPARTMENT OF TRANSPORTATION  
REHABILITATION AND RETROFIT REPAIRS  
FAI ROUTE 70  
POPLAR STREET BRIDGE APPROACHES  
ST. CLAIR COUNTY

STRUCTURE NO. 082-0142 (RAMP S)  
SCALE:  
DATE: 02/28/2006

DATE: 4/19/2006 FILENAME: P:\2001\1201-1300\2001.1240\drafting\roadway\rehab\_dbs\tramps\parapet-deck.dgn

DESIGNED	JPD
CHECKED	JEL
DRAWN	CLK
CHECKED	JPD