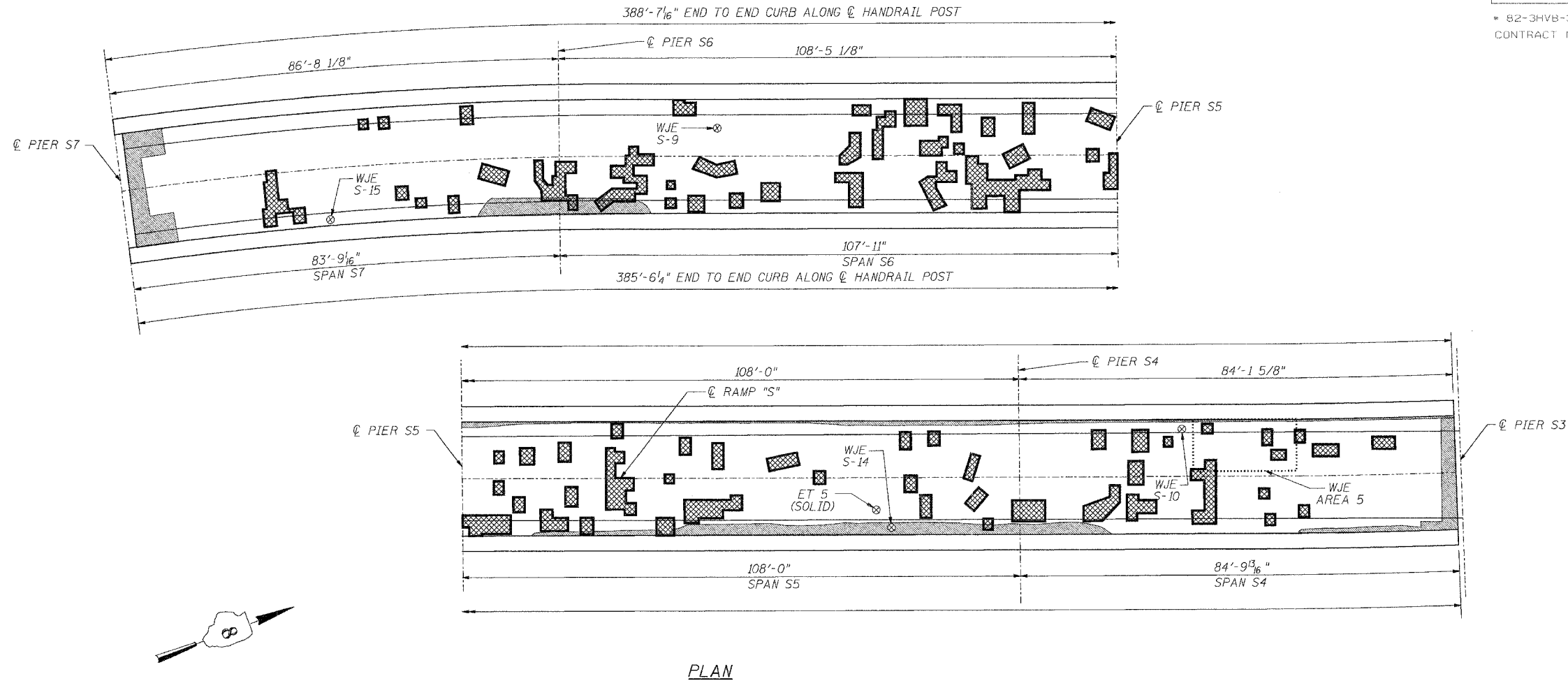


ROUTE NO.	SECTION	COUNTY	TOTAL SHEETS	SHEET NO.
F.A.I. 70	*	ST. CLAIR	111	92

FED. ROAD DIST. NO. 7 ILLINOIS FED. AID PROJECT- 114-70  
 \* 82-3HVB-3R-3 SHEET S-25 OF S-44  
 CONTRACT NO. 76305



INFRARED THERMOGRAPHIC INSPECTION RESULTS

ANTICIPATED DECK REPAIR QUANTITIES (ft.<sup>2</sup>)

FIELD OBSERVATIONS SUMMARY		TOPSIDE		LEGEND	
ITEM	UNIT	QUANT.	%		
TOTAL AREA	ft. <sup>2</sup>	8443		DELAMINATION	
SHADE/DEBRIS	ft. <sup>2</sup>	0		SPALL	
DELAMINATION	ft. <sup>2</sup>	234	2.8	DEBOND	
SPALL	ft. <sup>2</sup>	0	0	ASPHALT PATCH	
DEBOND	ft. <sup>2</sup>	610	7.2	SUBSURFACE PATCH	
ASPHALT PATCH	ft. <sup>2</sup>	0	0	SHADE/DEBRIS	
SUBSURFACE PATCH	ft. <sup>2</sup>	0	0		

SPAN	2000 SURVEY RESULTS	2005 ANTICIPATED PARTIAL DEPTH REPAIRS
S4	270	340
S5	340	430
S6	340	430
S7	270	340

QUANTITIES IN THIS TABLE ARE FOR INFORMATIONAL PURPOSES ONLY AND ARE INCLUDED UNDER THE BRIDGE DECK HYDRO-SCARIFICATION AND BRIDGE DECK MICROSILICA CONCRETE OVERLAY PAY ITEMS. REFER TO SPECIAL PROVISIONS.

NOTES:

WISS, JANNEY, ELSTNER ASSOCIATES, INC. CORE LOCATIONS DESIGNATED AS "WJE". EARTH TECH, INC. CORE LOCATIONS DESIGNATED AS "ET".

AREAS OF DECK DELAMINATIONS AND SPALLS SHOWN REQUIRING REPAIR ARE ESTIMATED. ACTUAL REPAIR LOCATIONS SHOULD BE SHOWN ON AS-BUILT DRAWINGS.

INFRARED INSPECTION DATE: 7/24/00-7/26/00  
 SURFACE TYPE: ASPHALT OVERLAY



INFRARED THERMOGRAPHIC INSPECTION RESULTS

DESIGNED	---/WJE
CHECKED	CSD
DRAWN	CLK
CHECKED	JPD

	REVISIONS		STATE OF ILLINOIS DEPARTMENT OF TRANSPORTATION REHABILITATION AND RETROFIT REPAIRS FAI ROUTE 70 POPLAR STREET BRIDGE APPROACHES ST. CLAIR COUNTY
	NAME	DATE	
INSPECTED: TC	CADD: MA/MD DS/EG		STRUCTURE NO. 082-0142 (RAMP S1)
ANALYSIS: TC	CHECKED: DU		SCALE: N.T.S.
			DATE: 02/28/2006

DATE: 4/19/2006 FILENAME: P:\2001\1201-1300\2001.12.10\drafting\roadwayrehab\_ds\rapms\earth\_tech\1\_s\_et0407.dgn