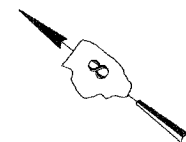
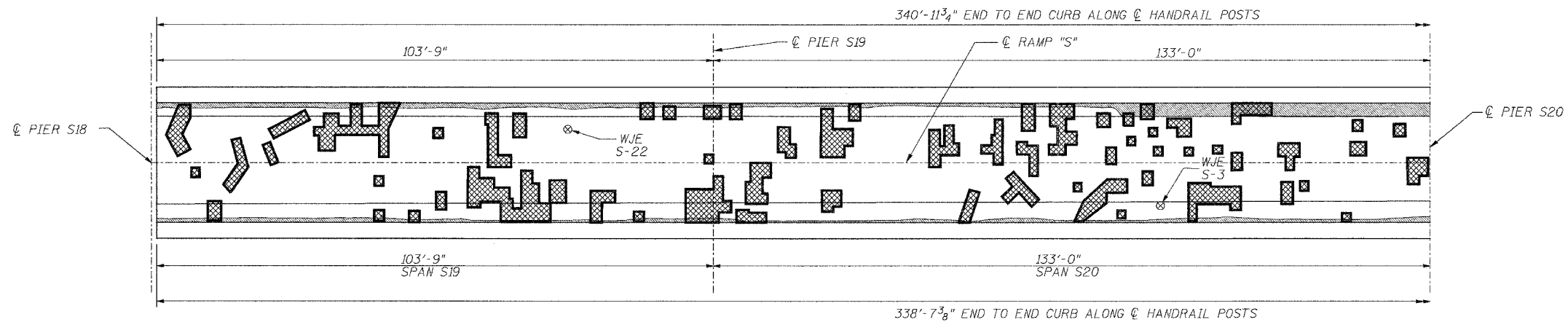
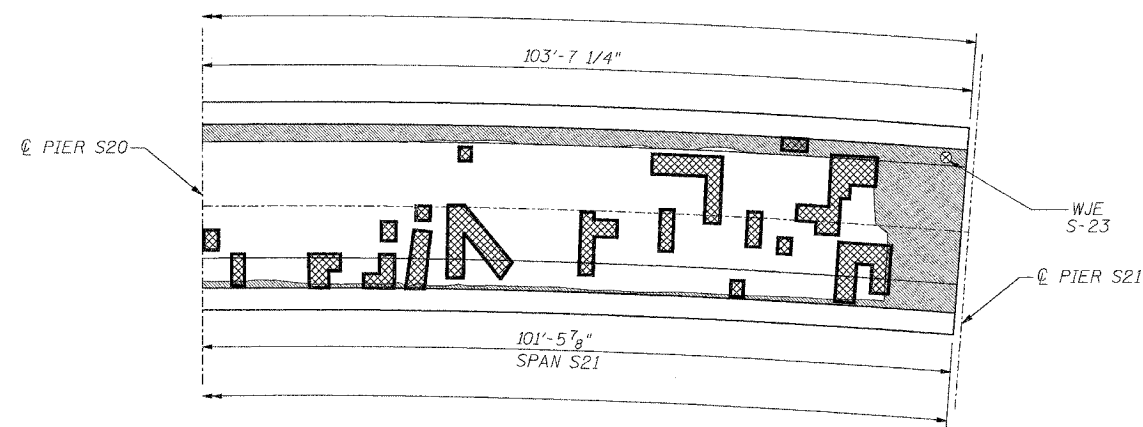


ROUTE NO.	SECTION	COUNTY	TOTAL SHEETS	SHEET NO.
F.A.I. 70	*	ST. CLAIR	111	97
FED. ROAD DIST. NO. 7	ILLINOIS	FED. AID PROJECT- 1H-70		

* 82-3HVB-3R-3 SHEET S-30 OF S-44
CONTRACT NO. 76305

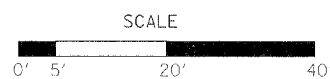


PLAN



INFRARED THERMOGRAPHIC INSPECTION RESULTS

FIELD OBSERVATIONS SUMMARY				TOPSIDE		LEGEND	
ITEM	UNIT	QUANT.	%				
TOTAL AREA	ft ²	7453		DELAMINATION			
SHADE/DEBRIS	ft ²	0		SPALL			
DELAMINATION	ft ²	272	3.6	DEBOND			
SPALL	ft ²	0	0	ASPHALT PATCH			
DEBOND	ft ²	927	12.4	SUBSURFACE PATCH			
ASPHALT PATCH	ft ²	0	0	SHADE/DEBRIS			
SUBSURFACE PATCH	ft ²	0	0				



ANTICIPATED DECK REPAIR QUANTITIES (ft.²)

SPAN	2000 SURVEY RESULTS	2005 ANTICIPATED PARTIAL DEPTH REPAIRS
S19	410	520
S20	530	670
S21	410	520

QUANTITIES IN THIS TABLE ARE FOR INFORMATIONAL PURPOSES ONLY AND ARE INCLUDED UNDER THE BRIDGE DECK HYDRO-SCARIFICATION AND BRIDGE DECK MICROSILICA CONCRETE OVERLAY PAY ITEMS. REFER TO SPECIAL PROVISIONS.

NOTES:

WISS, JANNEY, ELSTNER ASSOCIATES, INC. CORE LOCATIONS DESIGNATED AS "WJE". EARTH TECH, INC. CORE LOCATIONS DESIGNATED AS "ET".

AREAS OF DECK DELAMINATIONS AND SPALLS SHOWN REQUIRING REPAIR ARE ESTIMATED. ACTUAL REPAIR LOCATIONS SHOULD BE SHOWN ON AS-BUILT DRAWINGS.

INFRARED INSPECTION DATE: 7/24/00-7/26/00
SURFACE TYPE: ASPHALT OVERLAY

INFRARED THERMOGRAPHIC INSPECTION RESULTS

	REVISIONS		STATE OF ILLINOIS DEPARTMENT OF TRANSPORTATION REHABILITATION AND RETROFIT REPAIRS FAI ROUTE 70 POPLAR STREET BRIDGE APPROACHES ST. CLAIR COUNTY
	NAME	DATE	
INSPECTED: TC	CADD: MA/MD		STRUCTURE NO. 082-0142 (RAMP S) SCALE: N.T.S. DATE: 02/28/2006
ANALYSIS: TC	CHECKED: DU		

DATE: 4/19/2006 FILENAME: P:\2001\1201-1300\2001.1240\drafting\roadwayrehab.dwg\ramps\earth_tech\1021.dgn

DESIGNED	---/WJE
CHECKED	CSD
DRAWN	CI.K
CHECKED	JPD