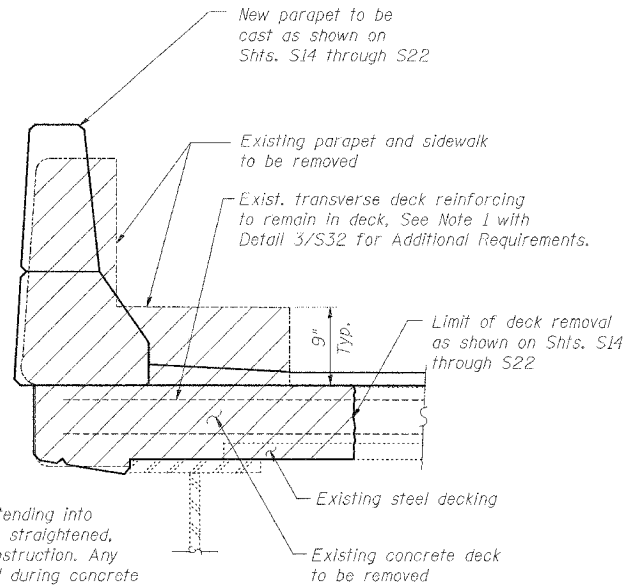
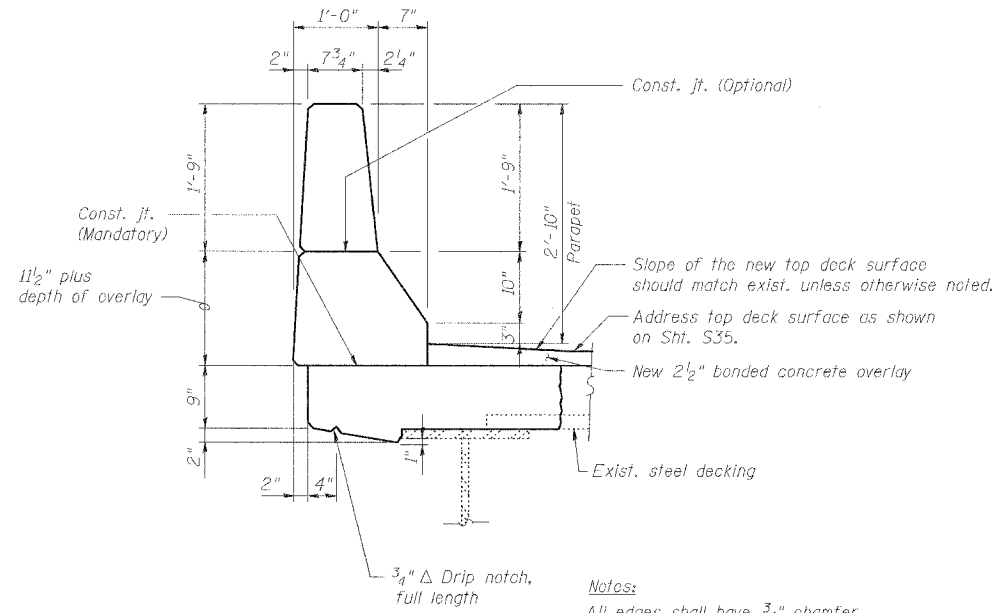


ROUTE NO.	SECTION	COUNTY	TOTAL SHEETS	SHEET NO.
F.A.I. 70	*	ST. CLAIR	111	99
FED. ROAD DIST. NO. 7	ILLINOIS	FED. AID PROJECT- 14-70		
* 82-3HVB-3R-3			SHEET S-32 OF S-44	
CONTRACT NO. 76305				

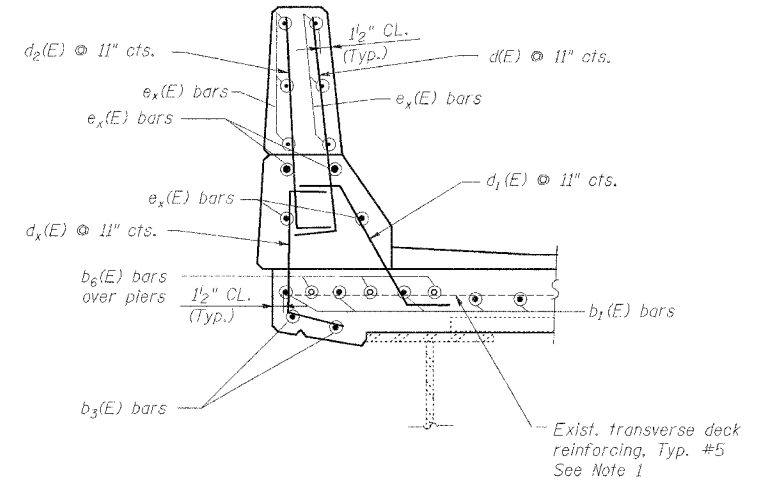


Note:
Existing deck reinforcing bars extending into the removal area shall be cleaned, straightened, and incorporated into the new construction. Any reinforcing bars that are damaged during concrete removal shall be replaced with an approved bar splicer or anchorage system. Cost included with concrete removal.

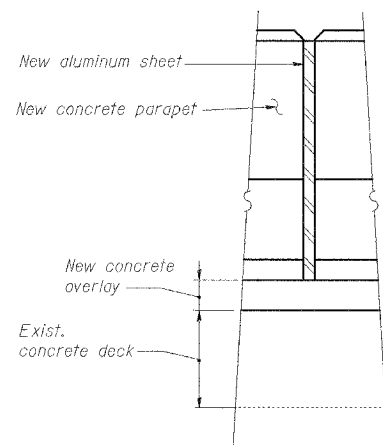
1 PARAPET DEMOLITION PLAN
S32



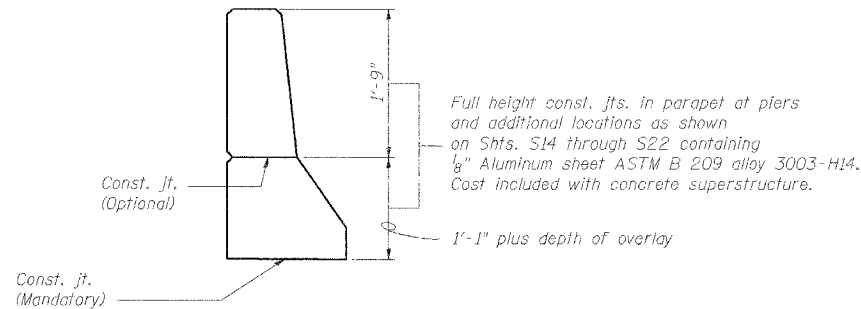
2 TYPICAL NEW PARAPET CROSS SECTION
S32



3 TYPICAL REINFORCEMENT FOR NEW PARAPET
S32
Note 1. Existing transverse reinforcement terminated at locations of existing floor drains and does not extend across the full width of the deck at those locations. Contractor shall provide #5 a₃₅₁(E) bars connected to existing transverse bars via mechanical splices at these locations. See deck plan sheets for quantities.



4 PARAPET CONSTRUCTION JOINT
S32



5 PARAPET JOINT DETAILS
S32

Notes:
e_x(E) bars shall not pass thru aluminum sheets.
Contractor shall verify existing dimensions in field.

REVISIONS	
NAME	DATE

TYPICAL PARAPET DETAILS
STATE OF ILLINOIS
DEPARTMENT OF TRANSPORTATION
REHABILITATION AND RETROFIT REPAIRS
FAI ROUTE 70
POPLAR STREET BRIDGE APPROACHES
ST. CLAIR COUNTY
STRUCTURE NO. 082-0142 (RAMP 5)
SCALE:
DATE: 02/28/2006

DATE: 4/19/2006
FILENAME: P:\2001\2001-1300\2001.1240\drafting\roadwayrehab.dwg\ramps\para_s_para01.dwg

DESIGNED	JPD
CHECKED	CSD
DRAWN	CLK
CHECKED	JPD