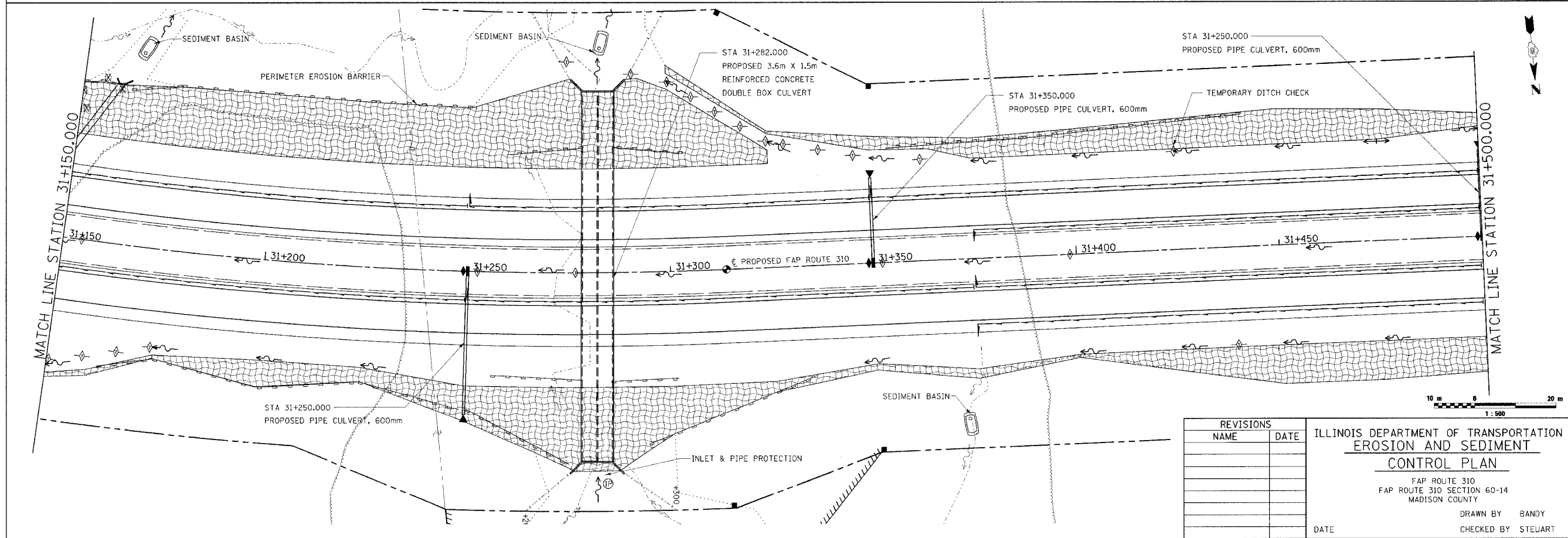
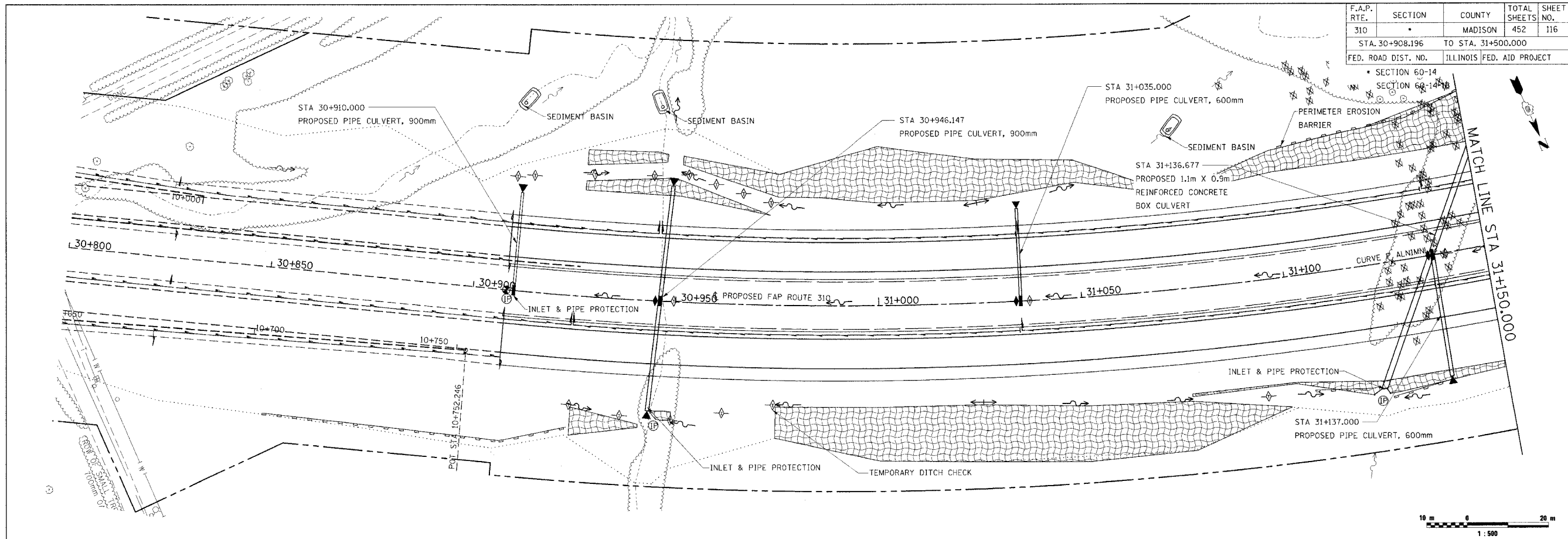


F.A.P. RTE.	SECTION	COUNTY	TOTAL SHEETS	SHEET NO.
310		MADISON	452	116
STA. 30+908.196		TO STA. 31+500.000		
FED. ROAD DIST. NO.	ILLINOIS	FED. AID PROJECT		



REVISIONS	
NAME	DATE

ILLINOIS DEPARTMENT OF TRANSPORTATION
EROSION AND SEDIMENT CONTROL PLAN
 FAP ROUTE 310
 FAP ROUTE 310 SECTION 60-14
 MADISON COUNTY
 DRAWN BY BANDY
 CHECKED BY STEUART
 DATE

EROSION AND SEDIMENT CONTROL PLAN, FAP ROUTE 310, STA. 30+908.196 TO STA. 31+500.000