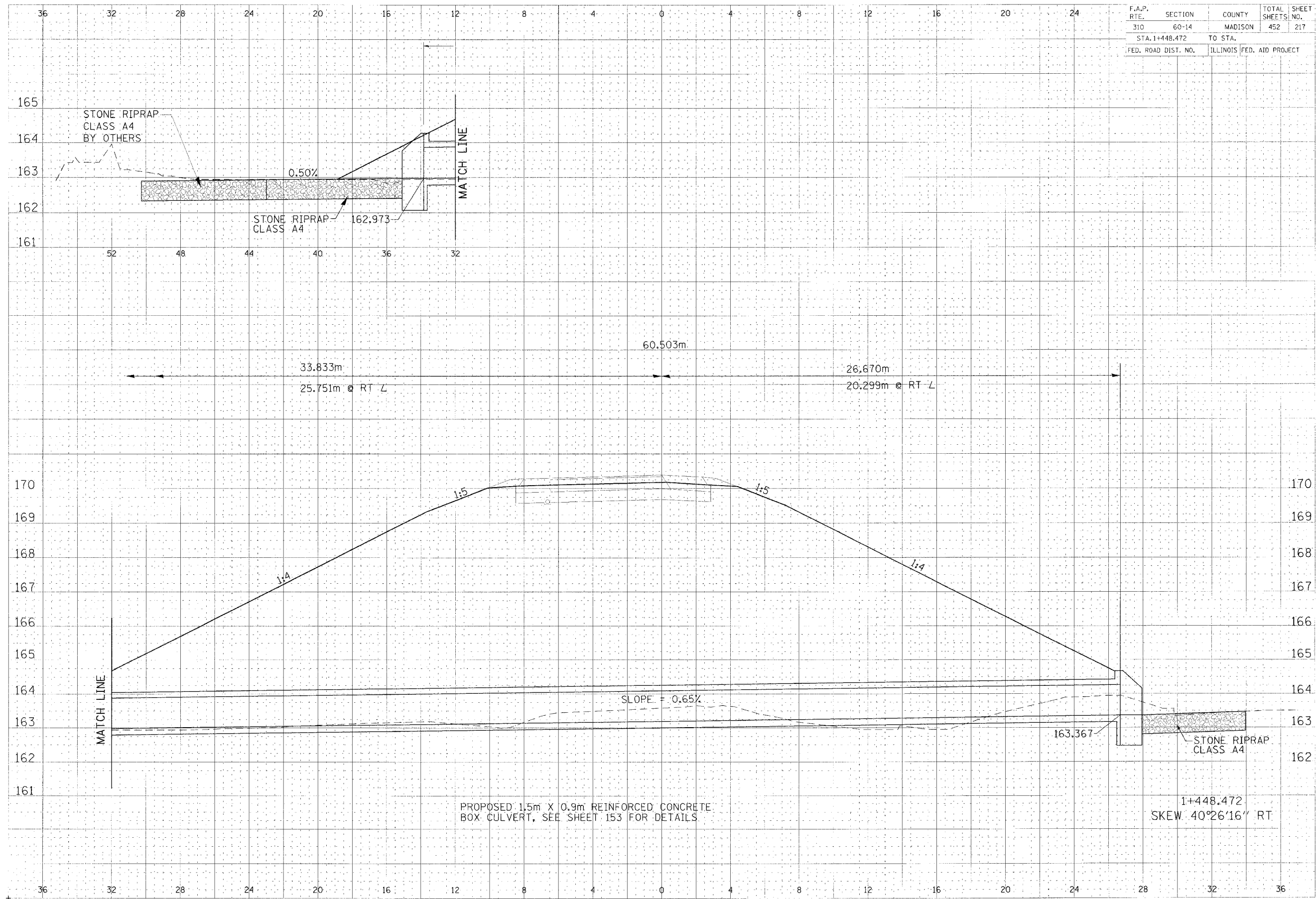


F.A.P. RTE.	SECTION	COUNTY	TOTAL SHEETS	SHEET NO.
310	60-14	MADISON	452	217
STA. 1+448.472		TO STA.		
FED. ROAD DIST. NO.	ILLINOIS		FED. AID PROJECT	



DATE	BY	REVISION

DATE	BY	REVISION

PROPOSED 1.5m X 0.9m REINFORCED CONCRETE BOX CULVERT, SEE SHEET 153 FOR DETAILS

1+448.472
SKEW 40°26'16" RT

CULVERT PROFILE, RAMP 2, FAP ROUTE 310, STA 1+448.472

W:\Projects\153\153.dwg 11/13/01 11:00 AM