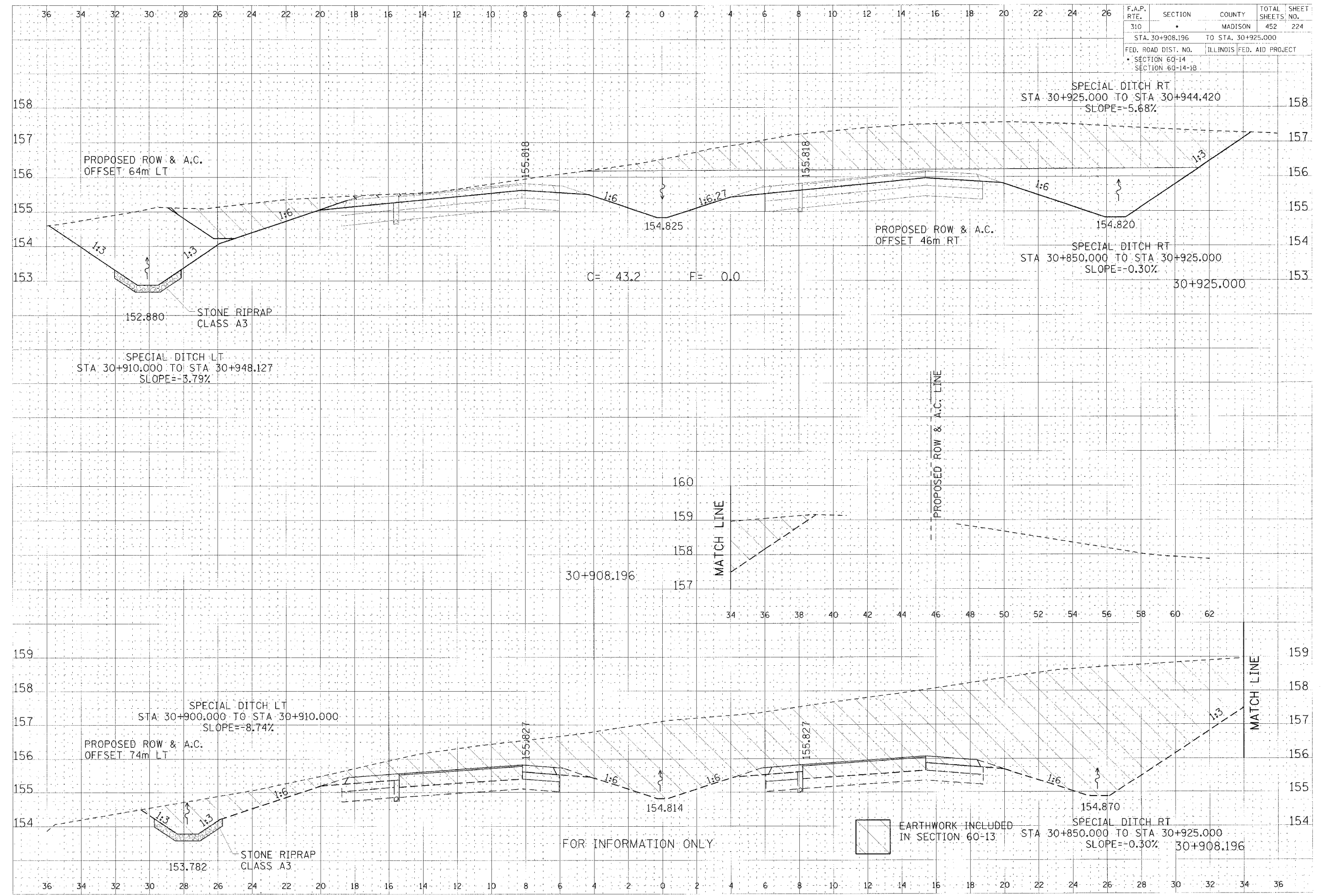


F.A.P. RTE.	SECTION	COUNTY	TOTAL SHEETS	SHEET NO.
310		MADISON	452	224
STA. 30+908.196 TO STA. 30+925.000				
FED. ROAD DIST. NO. ILLINOIS FED. AID PROJECT				
SECTION 60-14				
SECTION 60-14-1B				



FINAL SURVEY
 DATE 8/20/14
 BY [Signature]

FINAL SURVEY
 DATE 8/20/14
 BY [Signature]

CROSS SECTION, FAP ROUTE 310, STA 30+908.196 TO STA 30+925.000