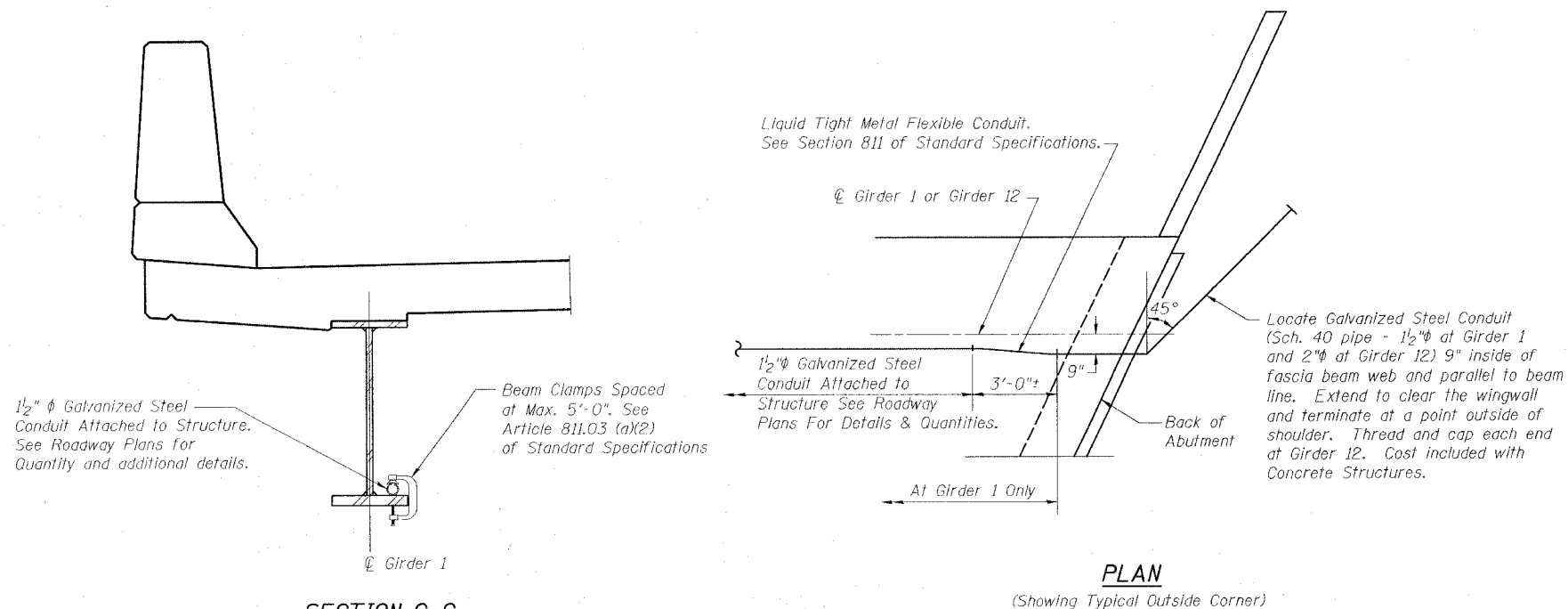


STATE OF ILLINOIS
DEPARTMENT OF TRANSPORTATION

| | | | | |
|-----------------------|---------|-----------|------------------|-----------|
| F.A.P. ROUTE | SECTION | COUNTY | TOTAL SHEETS | SHEET NO. |
| FAP 805 | 147BR | ST. CLAIR | 52 | 22 |
| FED. ROAD DIST. NO. 1 | | ILLINOIS | FED. AID PROJECT | |

Contract No. 76393



ELECTRICAL CONDUIT DETAILS

GENERAL NOTES

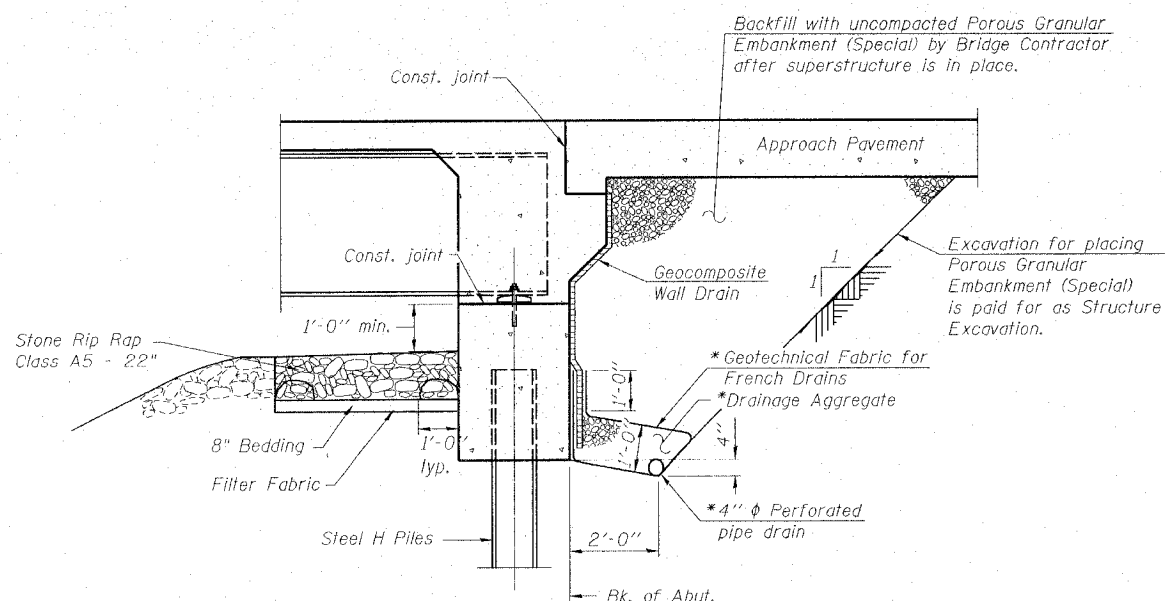
- Fasteners shall be high strength bolts. Bolts 3/4" diameter, open holes 15/16" diameter, unless otherwise noted.
- Calculated weight of Structural Steel = 336,690 Lbs.
- Field welding of construction accessories will not be permitted to beams or girders.
- The main load carrying member components subject to tensile stress shall conform to the Supplemental Requirements for Notch Toughness Zone 2. These components are the tension flanges and webs.
- Reinforcement bars shall conform to the requirements of AASHTO M 31 or M 322 Grade 60.2 Grade 60.
- Layout of slope protection system may be varied in the field to suit ground conditions as directed by the Engineer.
- The Contractor shall drive 1-Steel HP14x73 test pile in a permanent location at each abutment as directed by the Engineer before ordering the remainder the piles.
- All Construction joints shall be bonded.
- In addition to all other requirements of section 512 of the Standard Specifications, splices for Steel H-piles shall develop the full capacity of the steel's cross sectional area of the pile for tension, shear and bending forces. One approved method of achieving this requirement is full penetration butt welding of the entire cross section. Other types of splices meeting the full capacity requirement may be allowed subject to the approval of the Engineer. Any proposal by the Contractor to use an alternate splice method must include adequate documentation demonstrating that the full tension, shear and bending capacities will be met. Appropriate welder qualifications will be required for the positions and processes used in splicing all piles. Nondestructive testing of completed welds will be limited to visual inspection.
- The existing structural steel coating contains lead. The Contractor shall take appropriate precautions to deal with the presence of lead on this project.
- The inorganic rich primer / Acrylic / Acrylic Paint System shall be used for shop and field painting of new structural steel except where otherwise noted. The color of the final finish coat for all interior steel surfaces shall be gray, Munsell No. 5B 7/1. The color of the final finish coat for the exterior and bottom flange of the fascia beams shall be Gray, Munsell No. 5B 7/1. See Special provision for "Cleaning and Painting New Metal Structures."

TOTAL BILL OF MATERIAL

| ITEM | UNIT | SUPER | SUB | TOTAL |
|--|---------|-------|-------|-------|
| Porous Granular Embankment (Special) | Cu. Yd. | | 448 | 448 |
| Stone Riprap, Class A5 | Sq. Yd. | | 266 | 266 |
| Filter Fabric | Sq. Yd. | | 266 | 266 |
| Removal of Existing Structures | Each | | | 1 |
| Structure Excavation | Cu. Yd. | | 623 | 623 |
| Concrete Structures | Cu. Yd. | | 87.0 | 87.0 |
| Concrete Superstructure | Cu. Yd. | 410.8 | | 410.8 |
| Bridge Deck Grooving | Sq. Yd. | 1074 | | 1074 |
| Protective Coat | Sq. Yd. | 1343 | | 1343 |
| Furnishing and Erecting Structural Steel | L. Sum | 1 | | 1 |
| Stud Shear Connectors | Each | 2916 | | 2916 |
| Reinforcement Bars, Epoxy Coated | Pound | 83700 | 11400 | 95100 |
| Furnishing Steel Piles HP 14 x 73 | Foot | | 2064 | 2064 |
| Driving Steel Piles | Foot | | 2064 | 2064 |
| Test Pile Steel HP 14 x 73 | Each | | 4 | 4 |
| Temporary Sheet Piling | Sq. Ft. | | 678 | 678 |
| Name Plates | Each | | | 2 |
| Geocomposite Wall Drain | Sq. Yd. | | 219 | 219 |
| Pipe Underdrains for Structures, 4" | Foot | | 325 | 325 |
| Bar Splicers | Each | 160 | | 160 |

INDEX OF SHEETS

- General Plan & Elevation
- General Notes, Total Bill of Material & Misc. Details
- Stage Construction & Misc. Details
- Substructure Layout
- Deck Elevations
- Deck Plan and Cross Section
- Diaphragm Details
- Superstructure Details
- Structural Steel Framing
- Structural Steel Details
- NB Structure, North Abutment
- NB Structure, South Abutment
- SB Structure, North Abutment
- SB Structures, South Abutment
- Temporary Concrete Barrier
- Bar Splicer Assembly Details
- Anchor Bolt Details
- Boring Logs



SECTION THRU INTEGRAL ABUTMENT

(Horiz. dim. @ Rt. L's)

* Included in the cost of Pipe Underdrains for Structures.
Note: All drainage system components shall extend to 2'-0" from the end of each wingwall except an outlet pipe shall extend until intersecting with the side slopes. The pipes shall drain into concrete headwalls. (See Article 601.05 of the Standard Specifications and Highway Standard 601101).

THOUVENOT, WADE & MOERCHEN, INC.



| | | |
|----------|---|----------|
| DESIGNED | - | ALN |
| CHECKED | - | BWP |
| DRAWN | - | JMI, DEH |
| CHECKED | - | ALN |

ILLINOIS ROUTE 161 OVER
TRIBUTARY TO SCHOENBERGER CREEK
F.A.P. ROUTE 805 - SECTION 147BR
ST. CLAIR COUNTY
STATION 101+03.82
STRUCTURE NO. 082-0102 (N.B.)
STRUCTURE NO. 082-0103 (S.B.)

GENERAL NOTES, TOTAL BILL OF MATERIAL, & MISC. DETAILS

DATE: #DATE# TIME: #TIME# PLOTTED BY: #USER# FILE LOCATION: #FILE#