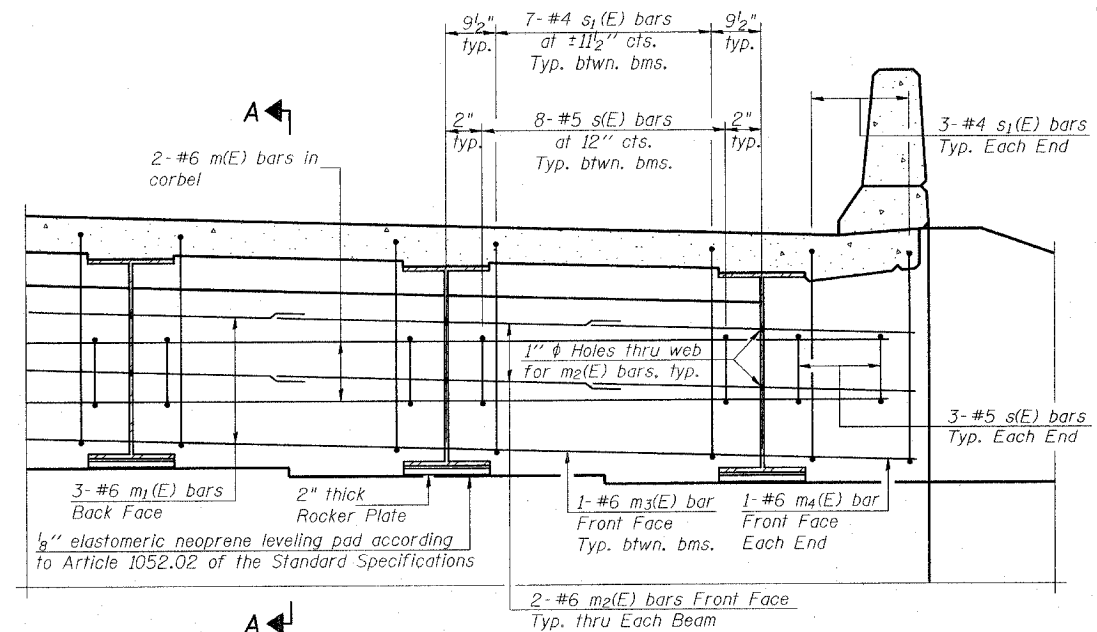


STATE OF ILLINOIS
DEPARTMENT OF TRANSPORTATION

F.A.P. ROUTE	SECTION	COUNTY	TOTAL SHEETS	SHEET NO.	SHEET NO.
FAP 805	147BR	ST. CLAIR	52	29	24 SHEETS
FED. ROAD DIST. NO. 1	BLDG. NO.	FED. AID PROJECT			

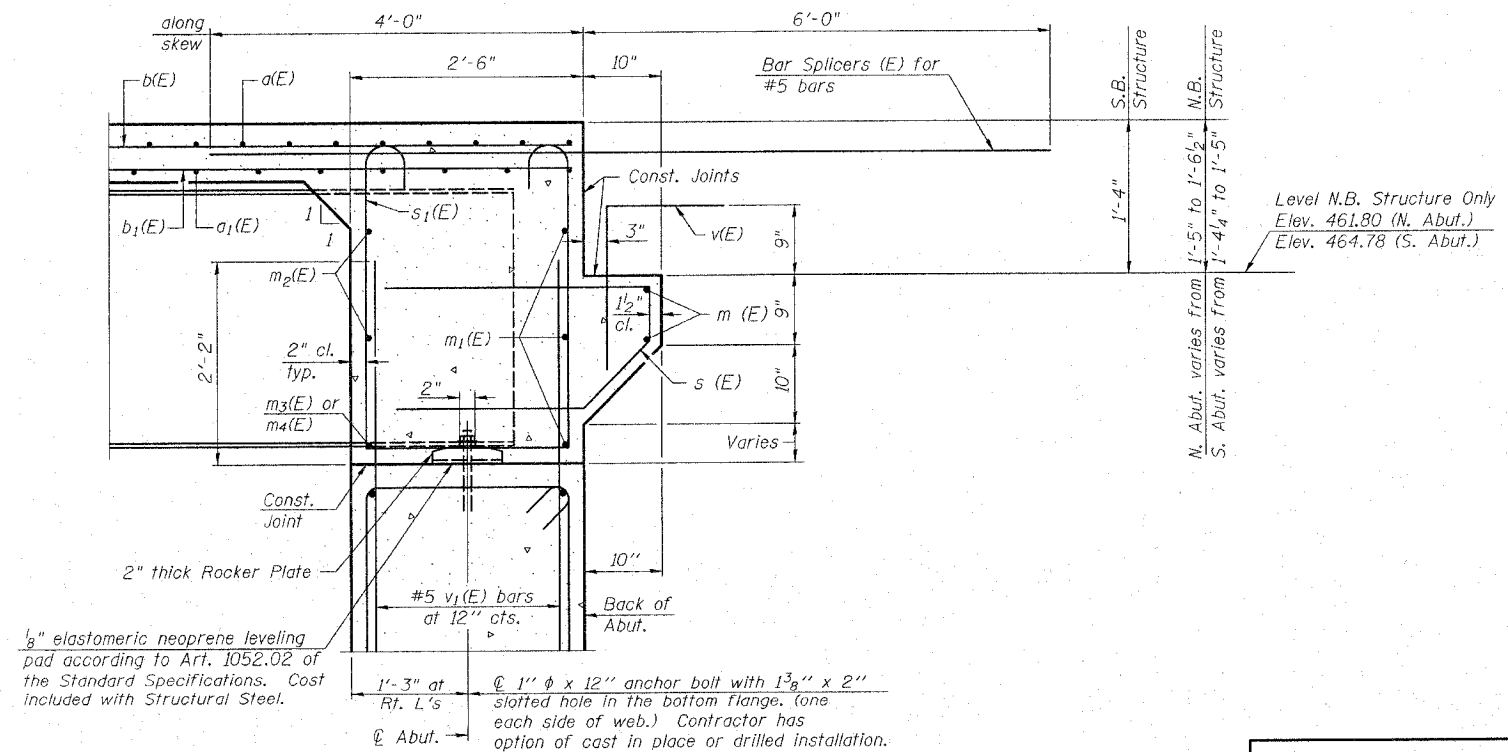
Contract No. 76393



DIAPHRAGM ELEVATION AT ABUTMENT

Notes:
Reinforcement bars in diaphragm are billed with superstructure on sheet 10 of 24.
Concrete in diaphragm is included with Concrete Superstructure on sheet 10 of 24.
For details of bars s(E) & s₁(E) see sheet 10 of 24.
The s(E) and s₁(E) bars shall be placed parallel to the beams. Spacing for these bars shall be at right angles to the beams.
For anchor bolt details see sheet 19 of 24.

MIN. BAR LAP
#6 bar = 2'-9"



SECTION A-A

Dimensions at right angles to abutment, except as shown.
* Cost included with Concrete Superstructure.

THOUVENOT, WADE & MOERCHEN, INC.



DESIGNED	-	ALN
CHECKED	-	BWP
DRAWN	-	JMI, DEH
CHECKED	-	ALN

SI-DS1 9-01-03

ILLINOIS ROUTE 161 OVER
TRIBUTARY TO SCHOENBERGER CREEK
F.A.P. ROUTE 805 - SECTION 147BR
ST. CLAIR COUNTY
STATION 101+03.82
STRUCTURE NO. 082-0102 (N.B.)
STRUCTURE NO. 082-0103 (S.B.)

DIAPHRAGM DETAILS